

MATT SILAS ARCHITECT

202 West Washington
P.O. Box 1702
Jonesboro, Arkansas 72403
Tel.(870) 268-0500
Fax. (870) 268-0501

ADDENDUM NUMBER 2

ISSUE DATE: SEPTEMBER 02, 2003

**PROJECT: ALLEN PARK TENNIS COURTS AND SIDEWALK IMPROVEMENTS -
JONESBORO, ARKANSAS.**

PROJECT NUMBER: 020304

OWNER: CITY OF JONESBORO

ARCHITECT: MATT SILAS ARCHITECT

TO: PROSPECTIVE BIDDERS

Please review items noted in this addendum. This addendum forms a part of the contract documents and modifies the bidding documents as indicated below. Acknowledge receipt of this addendum in the space provided in the bid form. Failure to do so may disqualify the bidder.

SPECIFICATIONS

SPECIFICATIONS

Documents 0 - Introductory Information, Bidding requirements, and Contract Requirements

Section 00100 - Advertisement For Bids

1. Bids will be received **FRIDAY, SEPTEMBER 12TH, 2003 UNTIL 1:00 P.M.** local time in lieu of September 4th as changed per Addendum No. 1 which was changed from August 26th.

Division 2 - Site Construction

Section 02790 - Athletic and Recreational Surfaces

Part 2 Products

2.01 Manufacturers

Novacrylic is an acceptable surfacing product as manufactured by Nova Sports U.S.A./ 1-800-USA-NOVA / www.novasports.com

Section 02821 - Chain Link Fences and Gates

Part 2 Products

PVC Fused Coating specified in this section specifically in 2.02, 2.03, 2.04 and 2.05 shall be modified to a Permafused II polyolefin coated system as manufactured by Anchor Fence / Master Halco Inc. or equal.

2.02 Chain Link Fence Fabric

Color selections as stated in Paragraph A shall include green and black.

2.03 Steel Fence Framing

Color selections as stated in Paragraph B shall include green and black.

Division 11 - Equipment

Section 11481 - Tennis Net and Net Post Equipment

Part 2 Products

2.01 Components (Add to the specification sections and outlined below.)

A. Net Posts and Sleeves:

5. Tennis Post shall be equal to Douglas DTP-37 with GS-24 ground sleeves and end plugs.

B. Center Strap Anchor:

3. Center tie-down anchor shall be equal to Douglas anchor.

C. Net:

The net specified on item 1 of this paragraph shall be changed to equal Douglas TN-36DM.

DRAWINGS

Sheet 1.1

1. Provide masonry transformer enclosure and gate as described on Attachment "A". See detail on Sheet 4.1 for other information.

Sheet 3.1

1. Omit second post, sleeve and footing at each court and each side of court intended for doubles play as indicated on structural drawing or any other drawing.

2. Reduce all six inch (6") thick areas of courts to four inches (4").

3. Reduce all five inch (5") thick concrete at tennis courts to four inches (4).

4. Refer to General Structural Notes, Item 1: Concrete shall be 4,000 p.s.i. in lieu of 3,000 p.s.i.; master builder plasticizer is allowed to achieve the 3" slump requirement.

5. Refer to General Structural Notes, Item 5: This refers to rebar at perimeter of courts.

6. Refer to General Structural Notes, Item 8: Any mention of screening shall be modified to screeding. A laser screed or vibrating screed shall be used.

Sheet 4.1

1. Refer to Electrical Riser Diagram:

a. Service entrance is 480/277V, 3PH, provide (2) parallel runs, (4) No. 350MCM, 4" conduit, each run.

- b. Panel "M" is 480/277, 3PH. The 200A and 100A circuit breakers are three pole. The (2) 100A provisions are three pole.

Sheet 4.2

1. Refer to Light Pole Detail.
 - a. The 46' dimension is the overall pole length, the height of the pole above finish grade is 40'.
 - b. Electrical Panel "A" is 225A/480/277V/3PH, provide eighteen single pole spaces in panel, (6) 40A/2P circuit breakers and (1) 20A/1P circuit breaker.

Sheet 4.3

1. Refer to Light Pole Detail.
 - a. Electrical Panel "A" is 225A/480/277V/3PH, provide eighteen single pole spaces in panel, (6) 40A/2P circuit breakers and (1) 20A/1P circuit breaker.

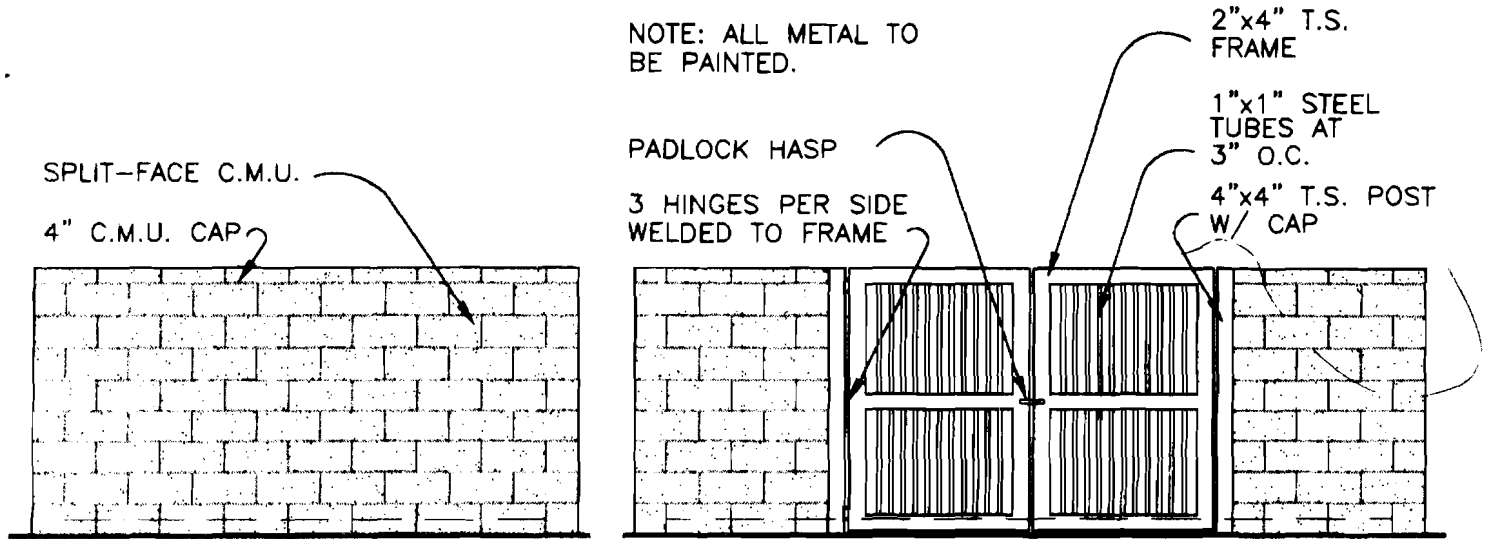
General Electrical

1. Allow for the control of lighting for courts to be by photocell, timer and contactor. Details will be issued in Addendum No. 3.

Grate and Drainage Channel

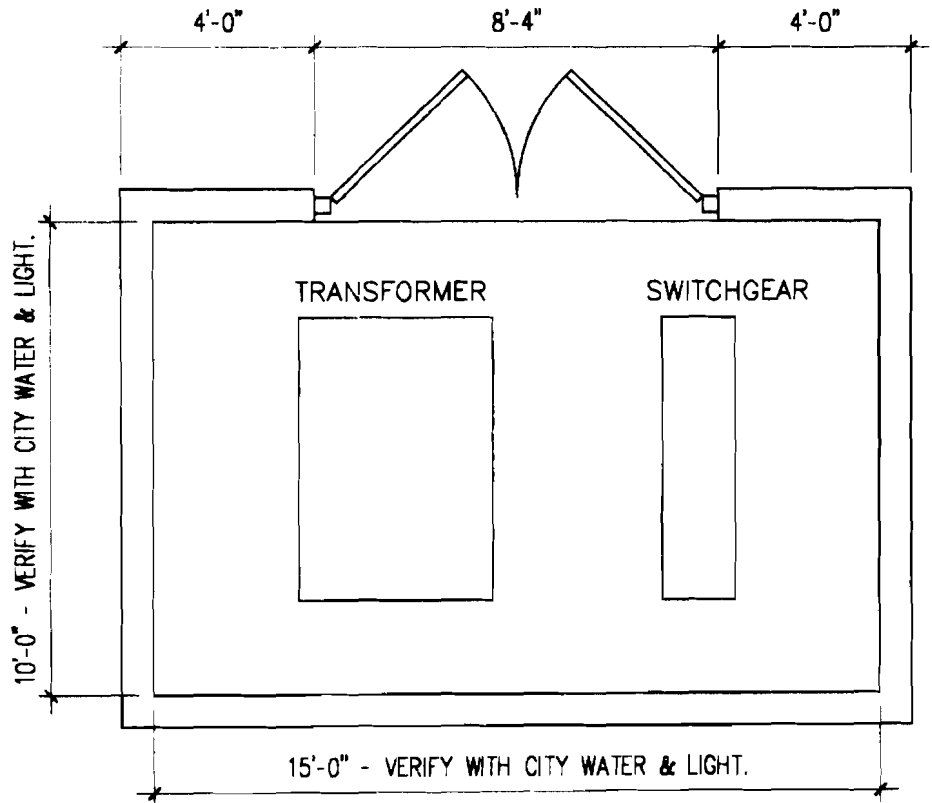
The grate and drainage channel located inside the tennis court area shall be removed from the Contractor's Bid. Also, the grate channel on the East side of the court area will be removed and not part of the Contractor's Bid.

Attachment - C - Detail 1



SIDE ELEVATION

FRONT ELEVATION



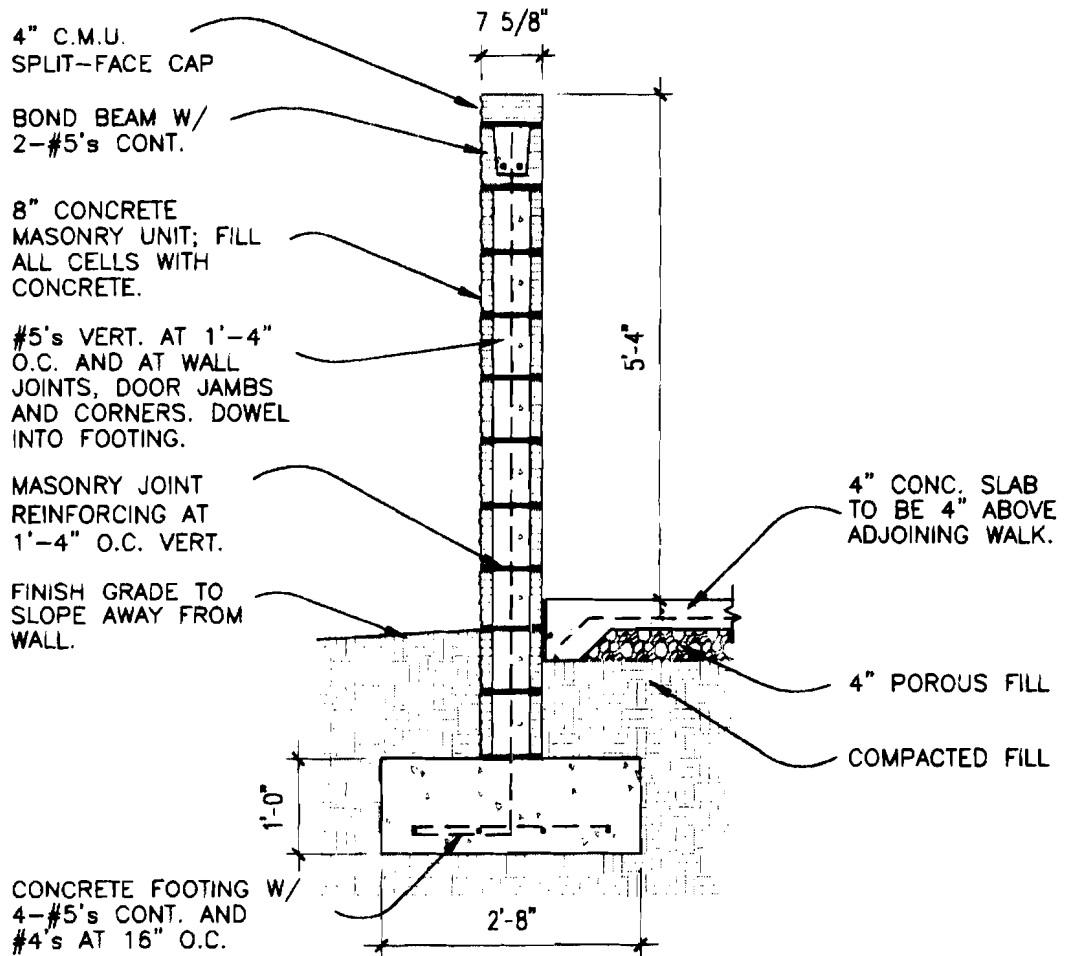
PLAN VIEW

TRANSFORMER ENCLOSURE

1

SCALE: 1/4" = 1'-0"

Attachment - C - Detail 2



TRANSFORMER WALL DETAIL

2

SCALE: 1/2" = 1'-0"