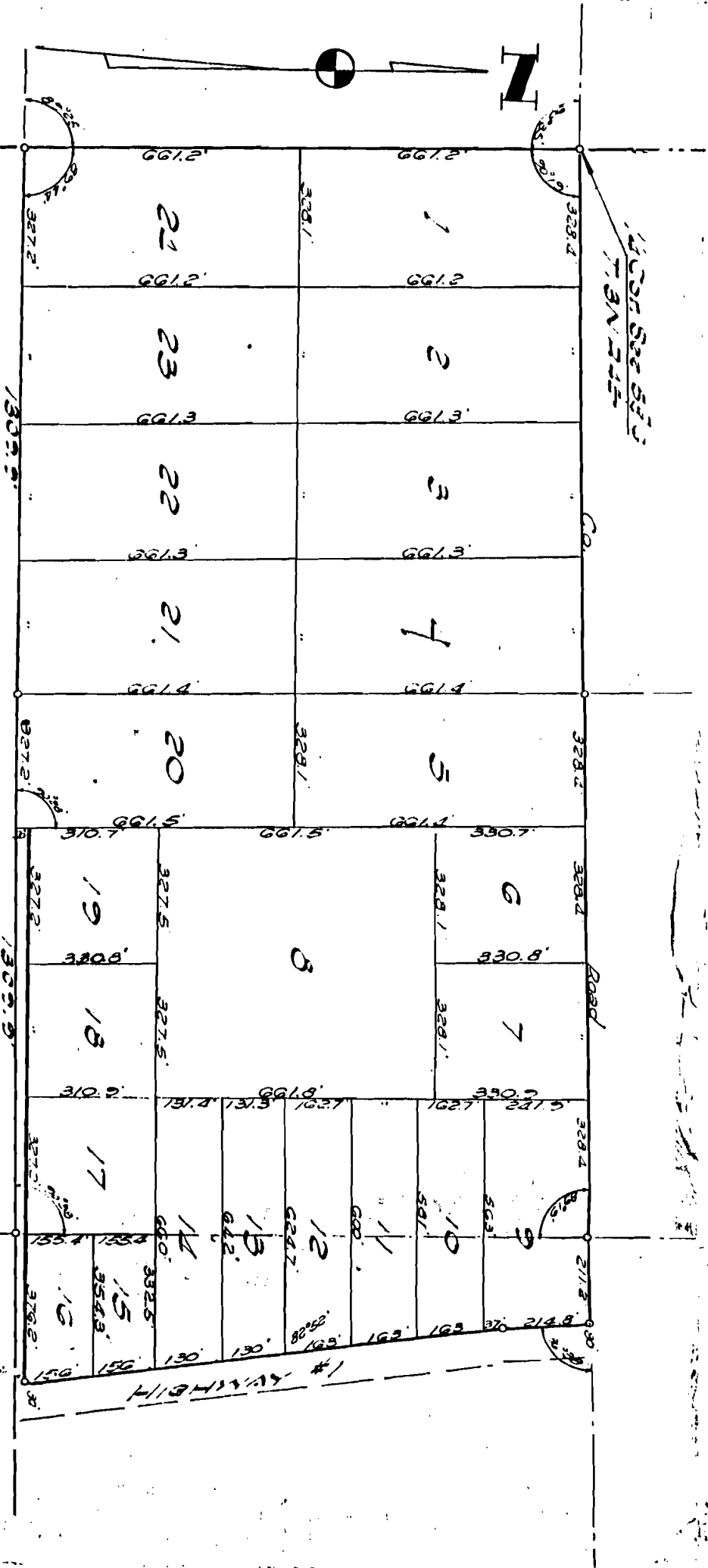


State of Arkansas
County of Craighead
A TRUE COPY I CERTIFY,
T. FLEETWOOD, Chapsy & Clerk
By *Therese Shandrea*



DINE HILL SUB-DIV. OF
A PART OF SEC. 5 T. 3 N. R. 2 E.
CRAIGHEAD CO. ARK.

Scale 1" = 300'
Surveyed 1955 by
LAWMAN & LAWWOOD
268 C.E.

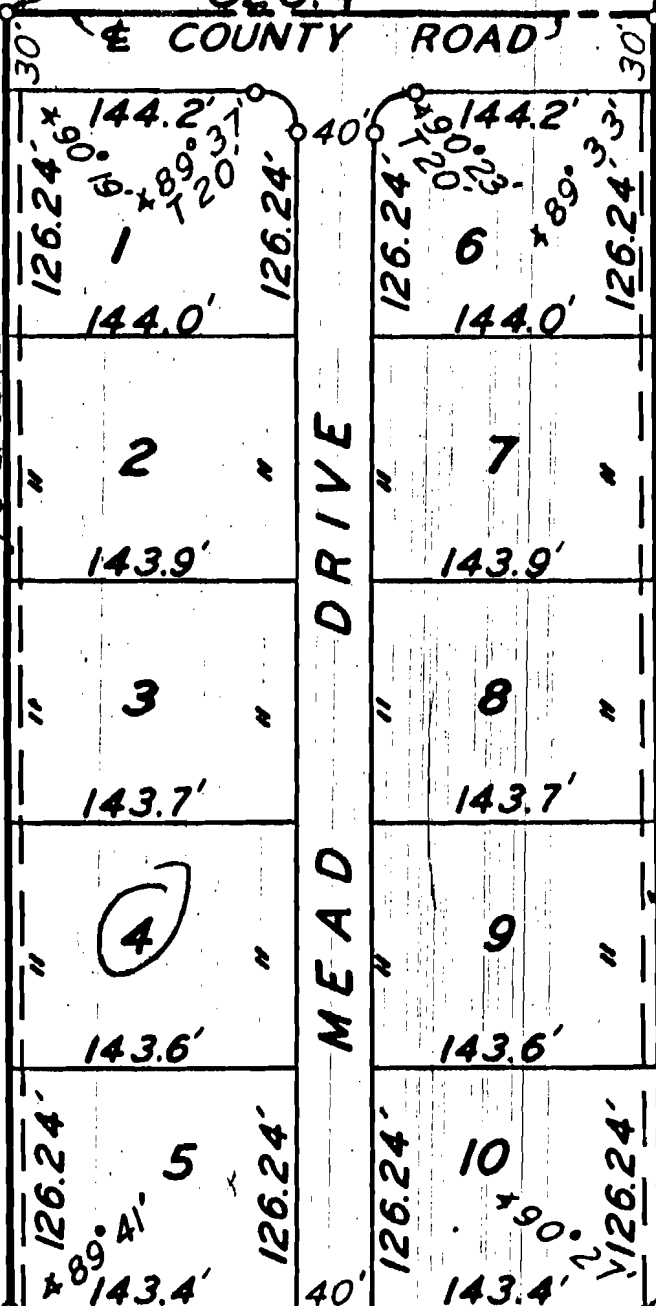
Order for Record April 6-1956. 9:00 A.M.

Leaving Taylor, Clark
Ben Thomas Exitor, D.P.

NW COR LOT 1
(PINE HILL
SUB'D)

328.4'

NE COR LOT 1
(PINE HILL SUB'D)



SW COR LOT 1
(PINE HILL
SUB'D)

326.8'

SE COR LOT 1
(PINE HILL SUB'D)

ROLLING HILLS SUBDIVISION

BEING A SUB-DIVISION OF LOT 1, PINE HILL SUB-DIVISION
OF A PART OF SECTION 5, T-13-N, R-4-E, CRAIGHEAD
COUNTY, ARKANSAS, (AS RECORDED IN BOOK 123, PAGE 34,
IN THE OFFICE OF THE CIRCUIT COURT CLERK AND EX-OFFICIO
RECORDER, CRAIGHEAD COUNTY, ARKANSAS).

OWNER'S CERTIFICATION

We hereby certify that we are the owners of the above described property; that we adopt the plat as shown hereon.

Pete Mead 7-31-64
Pete Mead Date

Dorothy Mead 7/31/64
Dorothy Mead Date

SURVEYOR'S CERTIFICATION

I hereby certify that the above plat is the result of a survey made in July 1964; that the monuments were found or set as noted thereon.

Associated Engineering Company, Inc.
Jonesboro, Arkansas

H. S. Johnson 7-27-64
H. S. Johnson, Ark. Reg. P. E. #1510

FILED FOR RECORD THIS JAN. 6TH, 1966 at 9:30
A.M. AND RECORDED IN PLAT DEED RECORD BOOK 158
PAGE 16.

SEARCHY TAYLOR, CLERK
BY Alice Taylor D.C.

(FOR DEDICATION DEED SEE DEED RECORD BOOK PAGE 315.)



MA