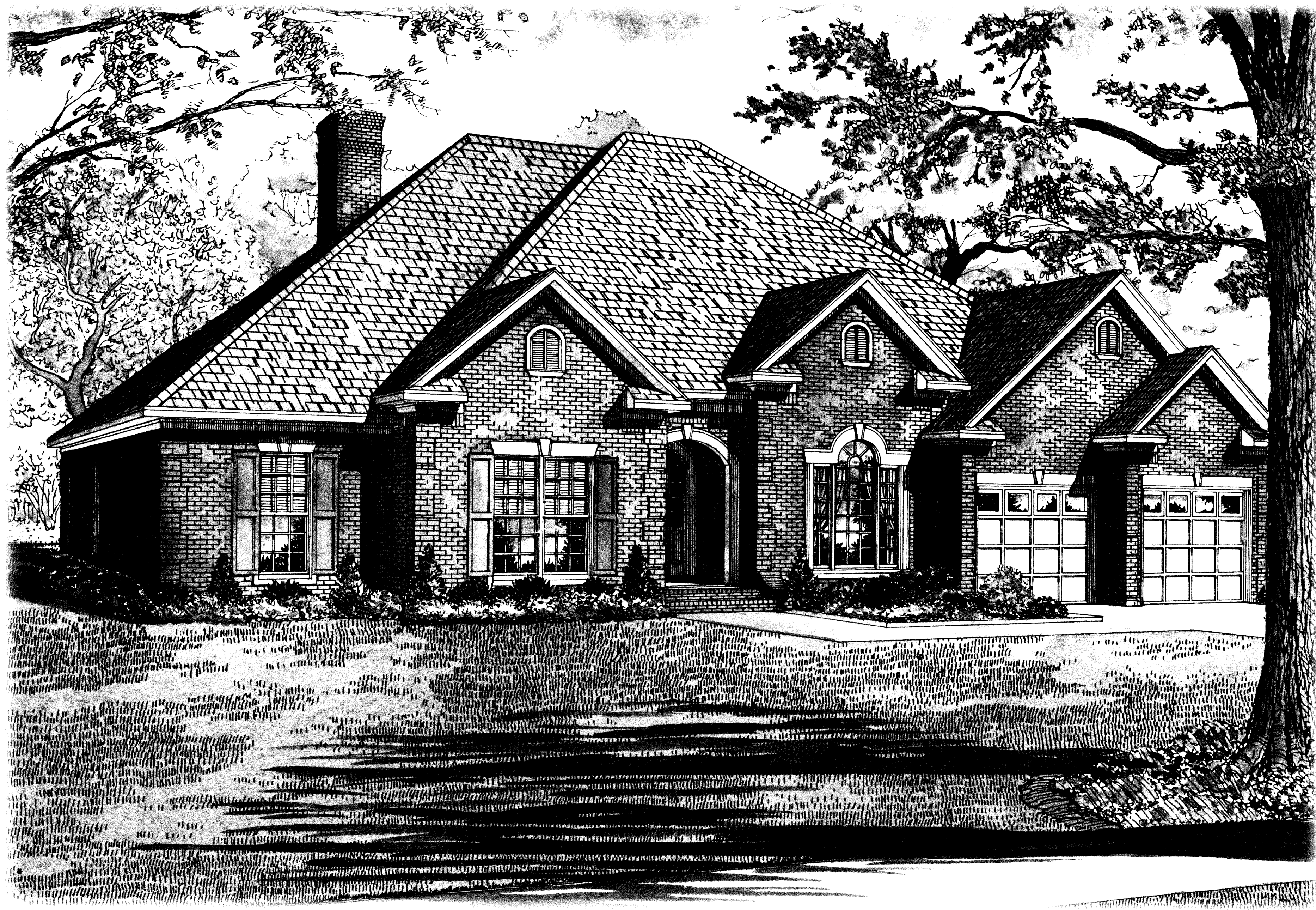


Your Home Plan Source...  
[www.nelsondesigngroup.com](http://www.nelsondesigngroup.com)



IF THIS STAMP IS NOT RED  
IT IS AN ILLEGAL SET OF PLANS  
REPRODUCTION OF THESE PLANS BY ANY MEANS IS  
PROHIBITED BY FEDERAL LAW. VIOLATIONS ARE  
PUNISHABLE BY FINES UP TO \$150,000 PER OFFENSE.  
CALL THE DESIGNER TO OBTAIN LEGAL COPIES OF THIS PLAN.  
*Nelson Design Group, LLC*  
Nelson D. G. D. C. P. B. D.

Welcome To Our Neighborhood...

*Nelson Design Group* LLC

RESIDENTIAL PLANNERS - DESIGNERS

Member  
AIBD • CPBD  
<http://www.nelsondesigngroup.com>  
800.590.2423

NATIONALLY  
PUBLISHED

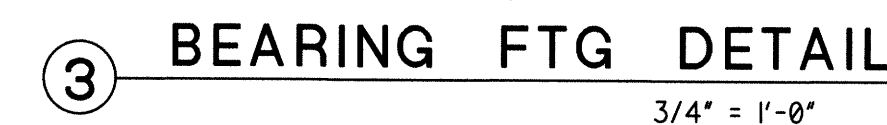
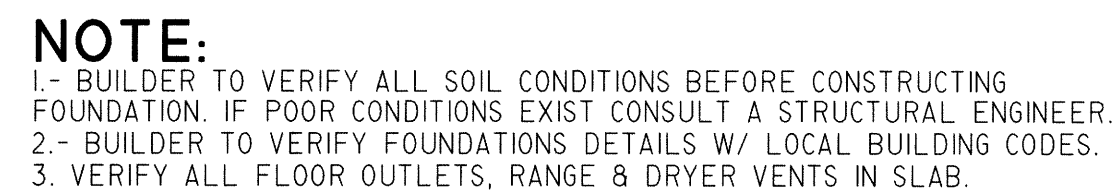
2200 Fowler Ave.  
Suite D  
Jonesboro, AR 72401  
870.931.5777  
Fax: 931.5792

NDG769









**NOTE:**  
ALL DIMENSIONS ARE FROM EXTERIOR STUD WALL.  
WHEN LAYING 8"x12"x16" COURSES, ALLOW 4" TO ALL  
EXTERIOR DIMENSIONS FOR OPTIONAL BRICK LEDGE.

1. ALL FOOTINGS SHALL REST ON VIRGIN, UNDISTURBED SOIL.
2. ASSUMED SOIL SHALL BE SAND OR GRAVEL, WITH MINIMUM TRACES OF DRY CLAY WITH A MINIMUM BEARING CAPACITY OF 2000 LBS/SQ FT.
3. UNLESS OTHERWISE NOTED, ALL SLABS ON GRADE SHALL BE 3000 P.S.I. 128 DAY COMPRESSIVE STRENGTH CONCRETE ON 4" SAND OR GRAVEL FILL MINIMUM WITH 6X6 - W14XW14WMM REINFORCING. INTERIOR SLABS SHALL BE PLACED ON 6 MIL STABILIZED POLYETHYLENE VAPOR BARRIER.
4. PROVIDE 1/2" EXPANSION JOINT MATERIAL BETWEEN ALL CONCRETE SLABS ON ABUTTING CONCRETE OF MASONRY WALLS OCCURRING IN EXTERIOR OR UNHEATED INTERIOR AREAS.
5. PLACE 1/2" DIAMETER X 18" OR 12" SILL PLATE ANCHOR BOLT AT EACH VERTICAL REBAR (WHERE OCCURRING) OR AT 4'-0" O.C. AND AT EACH CORNER AND BOTH SIDES OF OPENINGS.
6. FOOTING SIZES SHOWN ARE ONLY TYPICAL FOR STATED SOIL PRESSURES AND CONTINENT COMPACTION, WHICHEVER IS MORE RESTRICTIVE.
7. CONTRACTOR TO VERIFY FOOTINGS DEPTHS WITH LOCAL FROST REQUIREMENTS OR EXISTING SOIL CONDITIONS; WHICHEVER IS MORE RESTRICTIVE.
8. PROVIDE TERMITE PROTECTION AS REQUIRED BY LOCAL CODES.
9. PROVIDE DEEP SCORE CONCRETE JOINTS AT MID POINTS OF ALL GARAGES, BOTH DIRECTIONS.
10. MASONRY VENEER SHALL BE ANCHORED TO BACK-UP CONSTRUCTION WITH GALVANIZED CORRUGATED METAL TIES SPACING 16" O.C. HORIZONTALLY AND 24" O.C. VERTICALLY.
11. INSTALL CONTINUOUS APPROVED FLASHINGS AND COTTON CORD WEEPS AT 48" O.C. WITHIN FIRST EXPOSED COURSE ABOVE GRADE.
12. CRAWL SPACE FOUNDATIONS- PROVIDE CRAWL SPACE VENTILATION PER LOCAL CODE REQUIREMENTS.

[illegible]

**Nelson Design Group, LLC**  
RESIDENTIAL PLANNERS • DESIGNERS  
Member  
AIBD • CPBD  
<http://www.nelsondesigngroup.com>  
800.598.9422

2208 Fowler Ave.  
Suite 100  
Jonesboro, TN 37508  
870.935.7777  
Fax: 870.935.7576



MICHAEL E. NELSON  
P.B.D. Cert. No. AR-104

DATE	1/1/91
SCALE	1/4" = 1'-0"
BUILDER	
JOB	<b>NDG769</b>
DRAWN BY	

2 OF 5

NEILSON DESIGN GROUP, LLC or Michael E. Nelson assumes no liability for any HOME constructed from this plan. Release of these plans contemplates further cooperation among the owner, his contractor and the designer. Design and construction are complex. Although the designer and his consultants performed their services with due care and diligence, they cannot guarantee perfection. Communication is imperfect and every contingency cannot be anticipated. Any ambiguity or discrepancy between the drawings and the construction shall be the responsibility of the designer. Designing and building a home is a complex task and miscommunication and misunderstanding increases construction costs. A failure to cooperate by a simple notice to the designer shall relieve the designer from responsibility for all consequences. Changes made from the plans without the consent of the designer are unauthorized and shall relieve the designer of responsibility for all consequences arising out of such changes. Only qualified persons should be permitted to modify the drawings to construct the design. The contractor shall be responsible for the design. Written dimensions on these drawings shall have precedence over scaled dimensions. Contractors shall verify and be responsible for all dimensions and conditions on the job. This office must be notified of any variations from the dimensions and conditions shown by these drawings. Shop details must be submitted to this office for approval before proceeding with fabrication.


## NDG 769

" Where Traditional Values and Family Come Together "

**CAD**

**D**

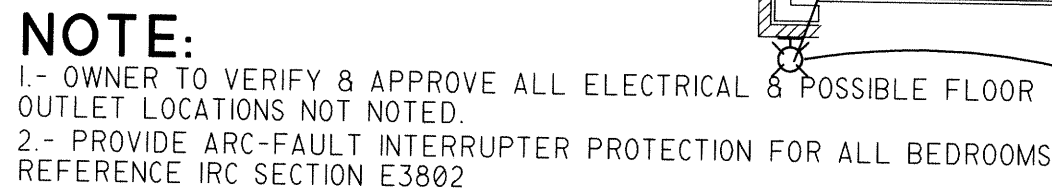
**ESIGNED**











**SLAB FOUNDATION SECTIONAL DETAIL**

3/4" = 1'-0"

3/4" PW T&G STURDI  
FLOOR GLUED & SCREWED

2X10 RIM JOIST

2X10 @ 16" o.c.

2X4 SILL PL.

2X4 STUDS @ 16" o.c.  
1/2" FOIL BACK SHEATHING  
TYVEK WRAP  
BRICK W/ TIES  
MIN. R-13 BATT INSULATION

SEE ELEVATION

IX2 TRIM OR 3 1/4" CROWN  
IX6 FRIEZE  
2X4 BLOCKING @ 24" o.c.  
IX4 OR 2X4 CONTINUOUS NAILER

3/8" EXT. PLYWOOD SOFFIT  
W/ 8"X 16" VENTS @ 5'0" o.c.  
OR 2" CONT.

IX6 FASCIA  
NOTCH 1/4" DEEP FOR 3/8" SOFFIT

2X4 CONTINUOUS NAILER  
2X4 LOOKOUT @ 24" o.c.  
2X6 SUB FASCIA  
IX2 TRIM

2 - 2X4 TOP PL.

2X6 OR 2X8 RAFTERS @ 16" o.c.  
MIN. R-30 BLOWN INSULATION  
2X6 OR 2X8 CEILING JOISTS @ 16" o.c.

15# ROOFING FELT  
1/2" CDX PLYWOOD W/ CLIPS MIN.

ROOFING - SEE ELEVATION

1/2" GYP. BOARD

**CRAWL FOUNDATION SECTIONAL DETAIL**

3/4" = 1'-0"

2X4 SILL PL.

2X4 STUDS @ 16" o.c.  
1/2" FOIL BACK SHEATHING  
TYVEK WRAP  
BRICK W/ TIES  
MIN. R-13 BATT INSULATION

3/4" PW T&G STURDI  
FLOOR GLUED & SCREWED

2X10 RIM JOIST

2X10 @ 16" o.c.

2X4 SILL PL.

[illegible]

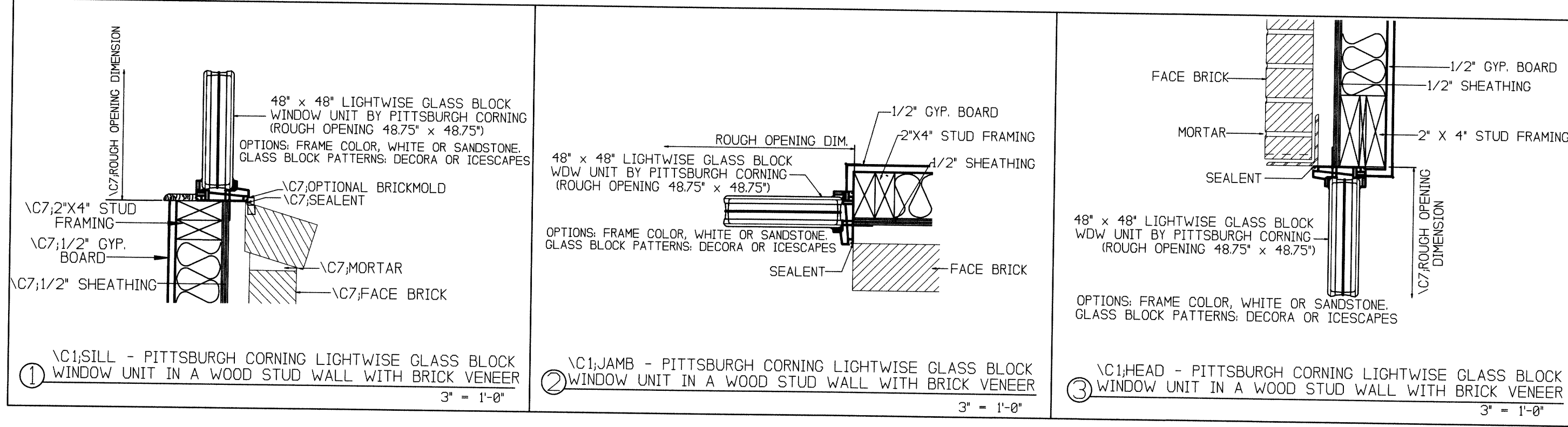
**Nelson Design Group, LLC**  
RESIDENTIAL PLANNERS • DESIGNERS  
Member  
AIA® • CPBD  
<http://www.nelsondesigngroup.com>  
800.558.2423  
2280 Foster Ave.  
JONESBORO, N.C. 7248  
878.331.7777  
878.331.7772



MICHAEL E. NELSON  
B.D. Cert. No. AR-104

DATE	1/1/91
SCALE	4" = 1'-0"
DRAWN BY	
NO.	NDG769
PROJECT	

4 OF 5



NOTICE DUTY OF COOPERATION

NELSON DESIGN GROUP, LLC, or Michael E. Nelson assumes no liability for any HOME constructed from this plan. Release of these plans contemplates further cooperation among the owner, his contractor and the designer. Design and construction are complex. Although the designer and his consultants performed their services with due care and diligence, they cannot guarantee perfection. Communication is imperfect and every contingency cannot be anticipated. Any ambiguity or discrepancy discovered by the use of these plans must be reported immediately to the designer. Failure to notify the designer compounds misunderstanding and increases construction costs. A failure to cooperate by a simple notice to the designer shall relieve the designer from responsibility for all consequences. Changes made from the plans without the consent of the designer are unauthorized and shall relieve the designer of responsibility for all consequences arising out of such changes. Only qualified architects, engineers, contractors, or Structural Engineers should attempt to modify any portion of this design. The contractor, for all dimensions and conditions on the job. This contract must be amended if any variations from the dimensions and conditions shown by these drawings. Shop details must be submitted to this office for approval before proceeding with fabrication.

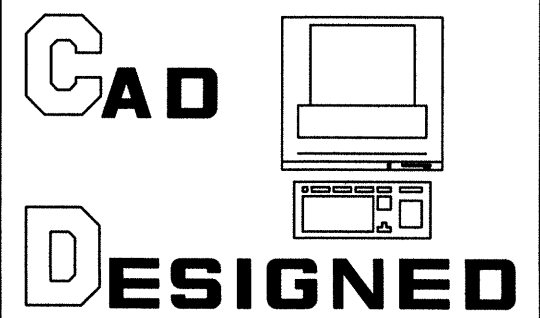
## ELECTRICAL PLAN / NOTES

NDG 769

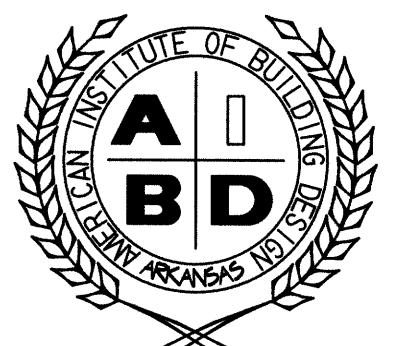
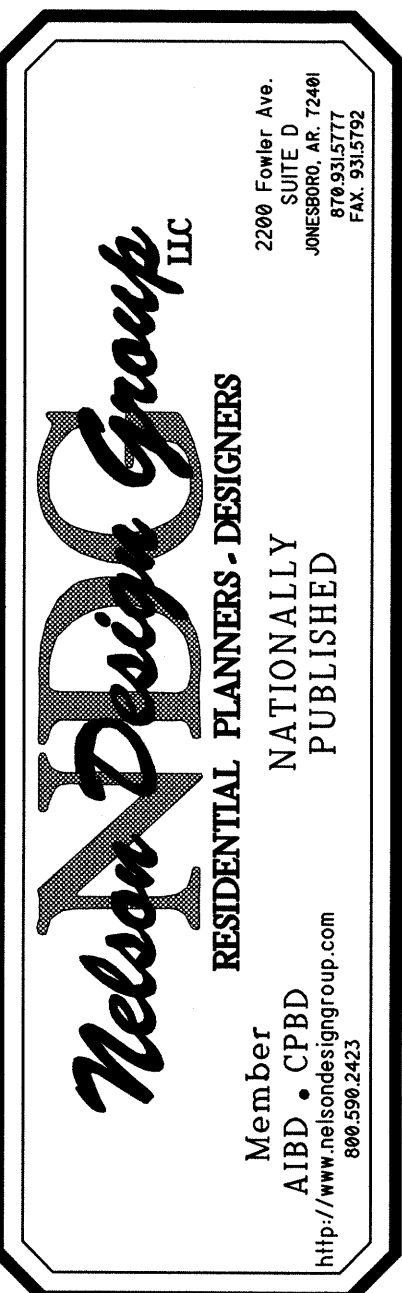
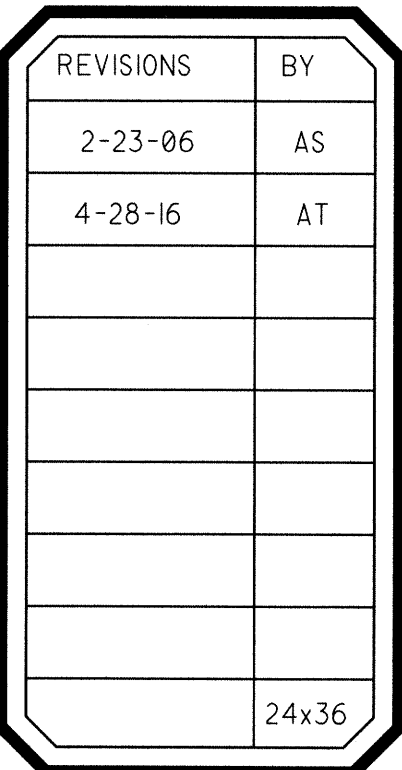
" Where Traditional Values and Family Come Together "

© 1991 NELSON DESIGN GROUP, LLC.  
Reproduction of these plans, in any form, without the written  
consent of the Designer, is prohibited.








$$1/2^n = 1 - \theta^n$$

MICHAEL E. NELSON  
P.B.D. Cert. No. AR-104

DATE	1/1/93
SCALE	1/4" = 1'-0"
BUILDER	
JOB	<b>NDG769</b>
DRAWN BY	

SA OF S