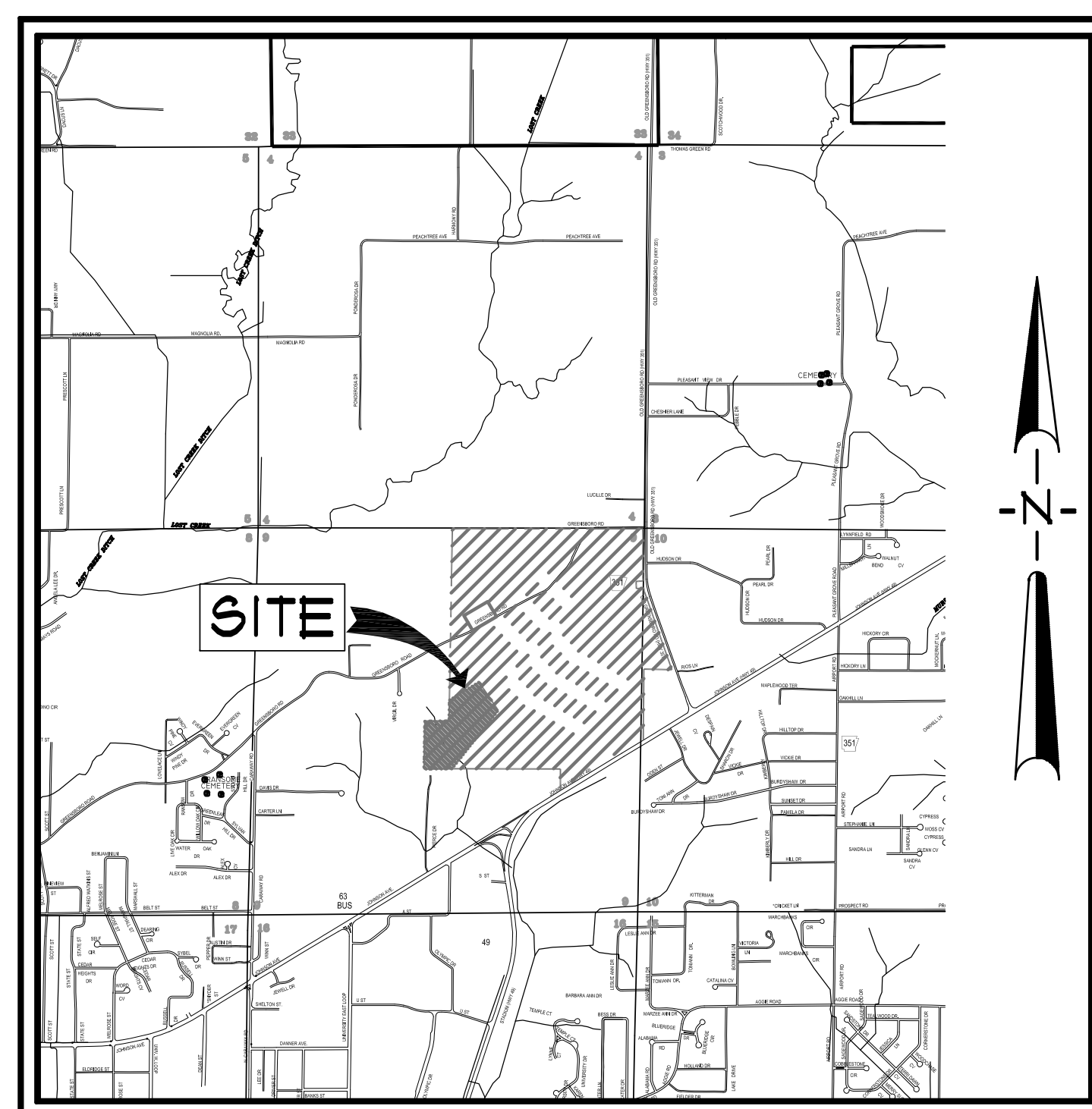


COMMERCIAL SUBDIVISION PLANS

LOT 14 - THE LANDING AT GREENSBOROUGH VILLAGE

PREPARED FOR
BRANDON HOLMES

JONESBORO, ARKANSAS
SEPTEMBER, 2017



VICINITY MAP
SCALE: 1" = 500'

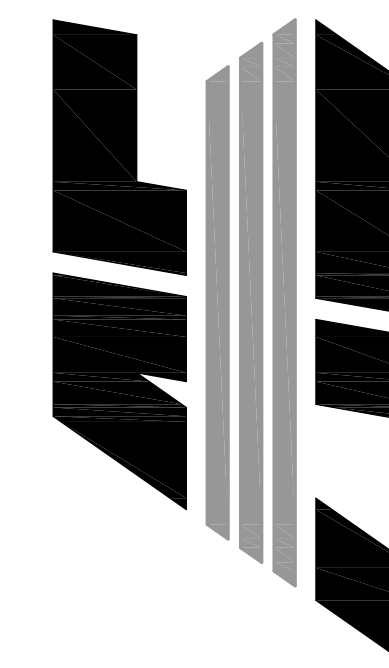


INDEX TO SHEETS

C001	INDEX SHEET
C002	GENERAL NOTES
C003	TOPOGRAPHIC SKETCH
C004	SITE OVERALL
C005	UTILITY PLAN
C006	GRADING OVERALL
C006A	GRADING PLAN
C006B	GRADING PLAN
C007	EROSION CONTROL PLAN
C008	STANDARD DETAILS
C009	EROSION CONTROL DETAILS

LOT 14
THE LANDING
AT GREENSBOROUGH VILLAGE
JONESBORO, ARKANSAS

ASSOCIATED
ENGINEERING, LLC
CIVIL ENGINEERING • LAND SURVEYING
LAND PLANNING
103 SOUTH CHURCH STREET • P.O. BOX 1462
JONESBORO, AR 72403
PH: 870-932-3594 • FAX: 870-935-1263



NO.	DESCRIPTION	DATE

COVER
SHEET

DATE:	09/13/2017	DRAWN:	COH
CADD FILE:	17107-SDP	CHECKED:	JME
DWG#:	0414091.000X	SHEET	C001

RESOURCE LIST

1. CITY OF JONESBORO - PLANNING AND ZONING
DERREL SMITH, CITY PLANNER
300 SOUTH CHURCH STREET
JONESBORO, AR 72401
879-932-0406
2. CITY OF JONESBORO - ENGINEERING
CRAIG LIGHT, P.E.
CITY ENGINEER
307 VINE STREET
JONESBORO, AR 72401
870-932-2438
3. CODES DEPT. FIRE MARSHALL
JASON WILLIS
3215 E. JOHNSON AVE.
JONESBORO, AR 72401
870-932-2428
4. CITY WATER AND LIGHT - ENGINEERING
JAKE RICE, P.E., P.S. - MANAGER
400 EAST MONROE, P.O. BOX 1289
JONESBORO, AR 72403
879-935-5581, FAX: 870-930-3303
SUSAN MERIDETH - ACTING ENGINEERING SERVICES DIRECTOR
870-930-3320
5. CENTERPOINT ENERGY
KEITH CRAIG - SERVICE TECHNICIAN
3013 OLD FEEDHOUSE ROAD
JONESBORO, AR 72404
CELL: 870-897-3750
6. AT&T
723 CHURCH, ROOM B.27
JONESBORO, AR 72403
PHIL FARLEY - AREA MANAGER INSTALLATION & REPAIR
870-972-7827, FAX: 870-972-7610
TOMMY GRAY - AREA MANAGER ENGINEERING DESIGN
870-972-7587, FAX: 870-972-7533
7. SUDDEN LINK - CABLE TV
1520 SOUTH CARAWAY ROAD
JONESBORO, AR 72401
BOB PROCK - CONSTRUCTION MANAGER
870-933-8429 EXT: 212, FAX: 870-972-8141
DEANNA HORNBACK - MANAGER
JIMMY YANCY - FIELD MANAGER
CELL: 870-219-8583

GENERAL NOTES

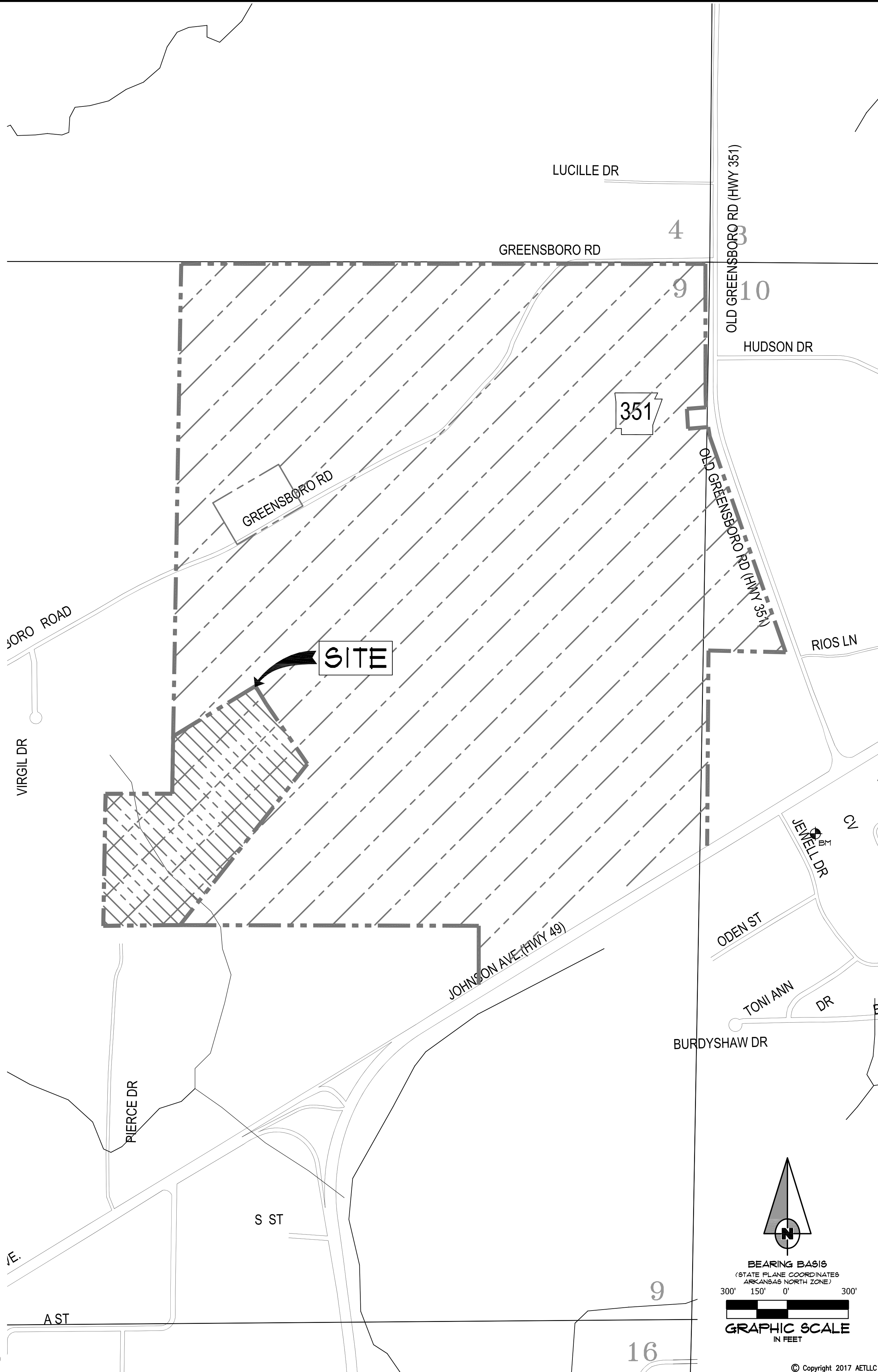
1. SUBJECT PROPERTY IS LOCATED WITHIN "X", AREAS DETERMINED TO BE OUTSIDE 500-YEAR FLOODPLAIN, AS DESIGNATED BY FEDERAL EMERGENCY MANAGEMENT AGENCY FLOOD INSURANCE RATE MAP FOR JONESBORO, COMMUNITY PANELS 05031 C0044C (PANEL 44 OF 200). EFFECTIVE DATE - SEPTEMBER 27, 1991.
2. SCREENING AND BUFFERING ARE AS SHOWN.
3. EASEMENTS ARE AS SHOWN.
4. NO KNOWN HISTORICAL STRUCTURES ARE LOCATED ON SUBJECT PROPERTY.
5. DIMENSIONS SHOWN ARE TO THE FACE OF CURB UNLESS OTHERWISE NOTED.

BENCHMARK LIST

1. ELEVATIONS SHOWN HEREON ARE IN FEET AND DECIMAL PARTS THEREOF AND REFER TO MSL DATUM.
2. BENCHMARK IS NATIONAL GEODETIC SURVEY (NGS) BENCHMARK DESIGNATED AS L-331, LOCATED APPROXIMATELY 321 FEET EAST AND 77 FEET NORTH OF THE SOUTHEAST CORNER OF SUBJECT PROPERTY, LYING ON THE SOUTH SIDE OF EAST JOHNSON AVENUE AND THE WEST SIDE OF JEWELL DRIVE.
ELEV. = 340.36 (NAVD 88).

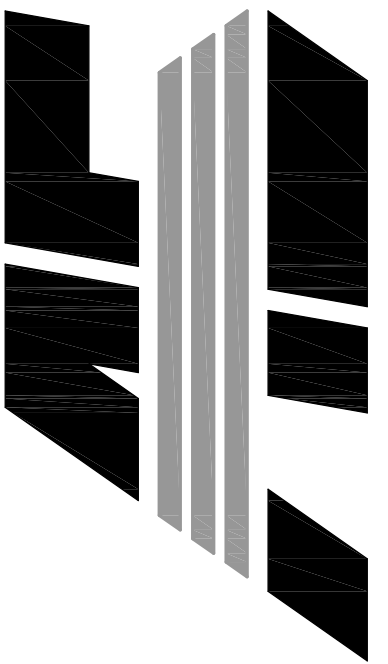
LEGEND

	• BOUNDARY LINE		• FIRE HYDRANT		• GRATED INLET
	• LOT LINES		• VALVE BOX		• DOWNSPOUT
	• FOUND IRON PIPE		• FIRE PROTECTION		• SPRINKLER CONTROL
	• FOUND COTTON-PICKER SPINDLE		• EXISTING OVERHEAD ELECTRICAL LINE		• MAILBOX
	• FOUND REBAR		• EXISTING UNDERGROUND ELECTRICAL LINE		• TRASH COMPACTOR
	• FOUND IRON PIPE W/ PL8 XXX CAP		• ELECTRIC TRANSFORMER/ELECTRIC METER		• COLUMN
	• CITY OF JONESBORO G.P.S. MONUMENT		• POWER POLE		• BOLLARD
	• BENCH MARK		• POWER JUNCTION, COMM. BOX		• HANDICAP SIGN
	• R/W MONUMENT		• SIGN LIGHTS/FLOOR LIGHTS		• EXISTING FENCE LINE
	• SET 1 1/4" IRON PIPE W/ PL8 #549 CAP		• LIGHT POLE (SINGLE)		• EXISTING GROUND CONTOUR
	• EXISTING SANITARY SEWER LINE		• LIGHT POLE (BACK-BACK)		• FINISHED GROUND CONTOUR
	• PROPOSED SANITARY SEWER LINE		• LIGHT POLE (3 @ 90")		• EXISTING TREE/SHRUB
	• EXISTING SANITARY SEWER MANHOLE		• TRAFFIC SIGN		• BASIN BOUNDARY
	• PROPOSED SANITARY SEWER MANHOLE		• TRAFFIC SIGNAL		• DRAINAGE FLOW
	• EXISTING SANITARY SEWER CLEANOUT		• TRAFFIC LIGHT CONTROL		• GENERAL DRAINAGE FLOW
	• PROPOSED SANITARY SEWER CLEANOUT		• TRAFFIC SIGNAL W/ POLE		• SWALE FLOW DIRECTION
	• PROPOSED SANITARY SEWER SERVICE LINE		• EXISTING OVERHEAD COMMUNICATION LINE		• SILT FENCE
	• EXISTING WATER LINE		• EXISTING UNDERGROUND COMMUNICATION LINE		• ROCK CHECK DAM
	• PROPOSED WATER LINE		• TELEPHONE PEDESTAL		• RIP RAP AREA
	• EXISTING WATER METER		• EXISTING GAS LINE		• INLET PROTECTION
	• PROPOSED WATER METER		• GAS METER		• ROCK CHECK DAM
	• WATER VALVE		• EXISTING STORM WATER MANHOLE		



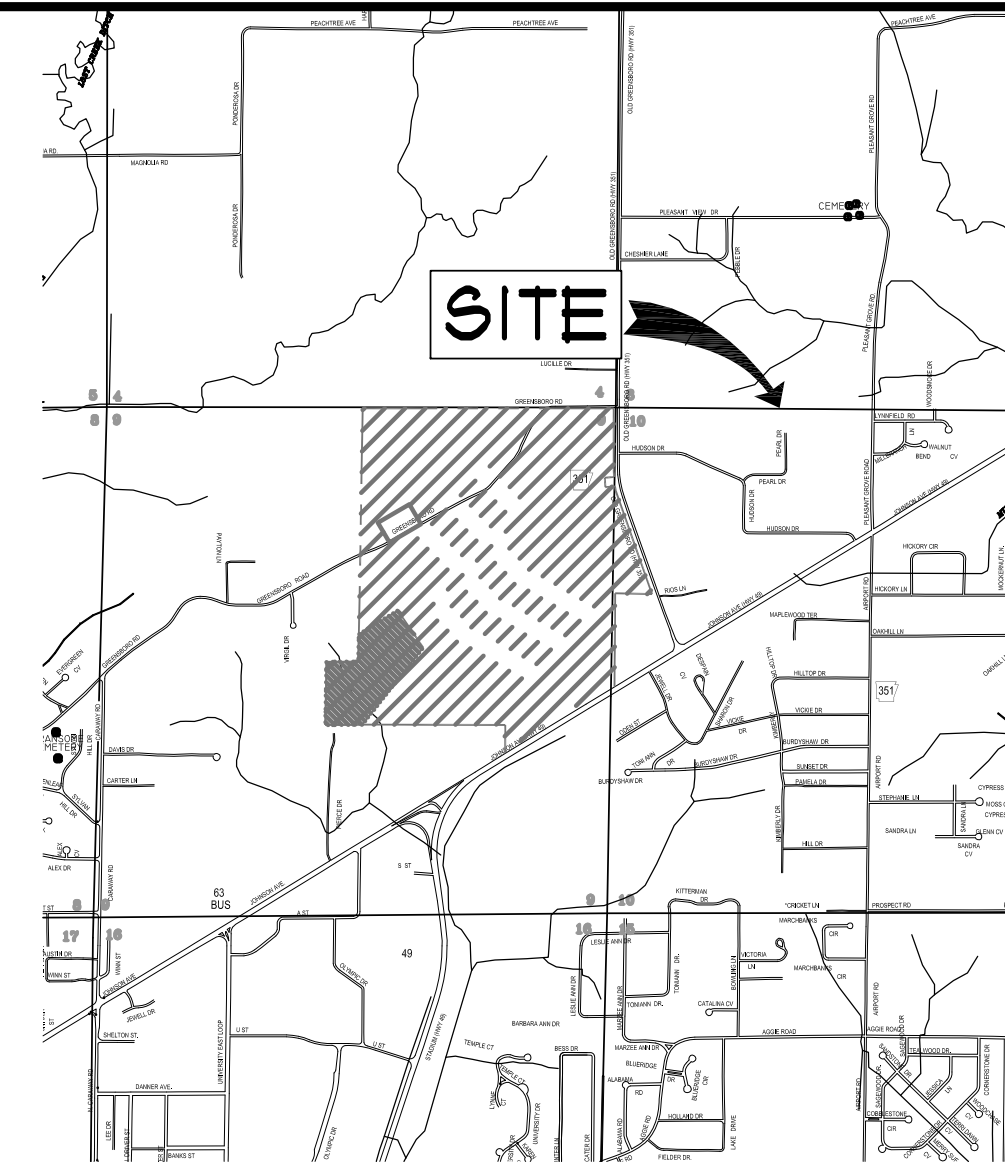
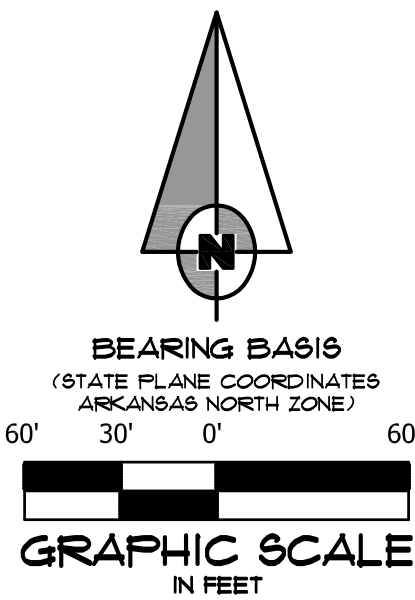
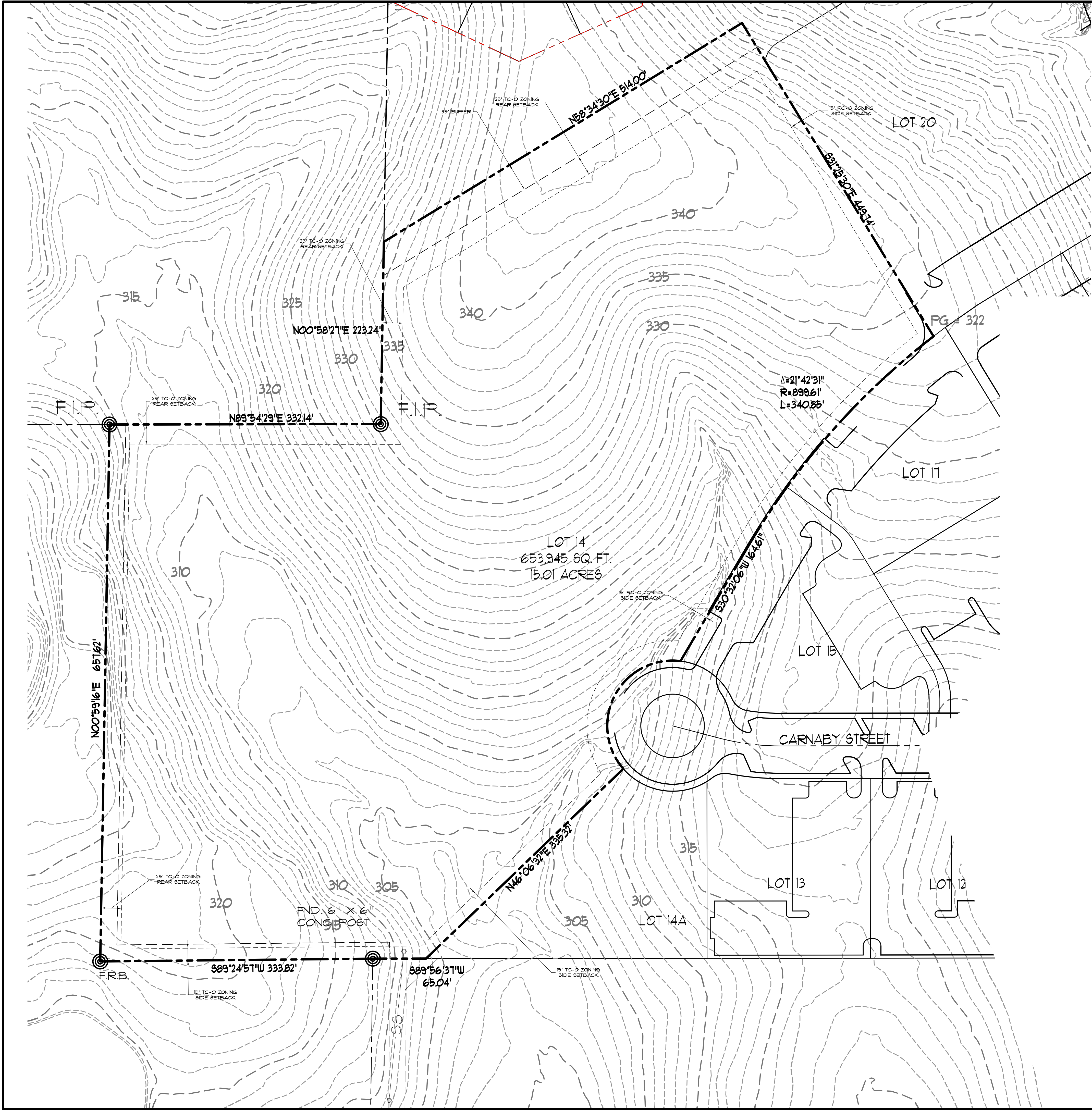
LOT 14
THE LANDING
AT GREENSBOROUGH VILLAGE
JONESBORO, ARKANSAS

ASSOCIATED
ENGINEERING, LLC
CIVIL ENGINEERING • LAND SURVEYING
LAND PLANNING
103 SOUTH CHURCH STREET • P.O. BOX 1462
JONESBORO, AR 72403
PH: 870-932-3594 • FAX: 870-935-1263



NO.	DESCRIPTION	DATE

GENERAL NOTES	
DATE: 09/13/2017	DRAWN: CCH
CADD FILE: 17107.SDP	CHECKED: JME
DWG#: 0414091.000X	SHEET
SCALE: AS SHOWN	C002



LEGEND	
	BOUNDARY LINE
	ADJACENT LOT LINE
	EASEMENT LINE
	BUILDING SETBACK LINE
	FOUND REBAR
	FOUND COTTON PICKER SPINDLE
	FOUND IRON PIPE
	SET 1-1/4\"/>
	FENCE LINE
	OVERHEAD ELECTRICAL LINE

DESCRIPTION

LOT 14, OF THE LANDING AT GREENSBOROUGH VILLAGE, AS RECORDED IN BOOK "C", PAGE 211 IN THE PUBLIC RECORDS AT THE CLERK'S OFFICE FOR CRAIGHEAD COUNTY, JONESBORO, ARKANSAS,

CONTAINING SOME 653,945.60 SQ. FT. OR 15.01 ACRES, MORE OR LESS,

SUBJECT TO EASEMENTS, RESERVATIONS, RESTRICTION AND RIGHTS OR WAY OR RECORD.

NOTES

1. ELEVATIONS SHOWN HEREON ARE A COMBINATION OF FIELD DATA AND 2011 LIDAR INFORMATION PROVIDED BY THE CITY OF JONESBORO.

LOT 14

THE LANDING

AT GREENSBOROUGH VILLAGE

JONESBORO, ARKANSAS

ASSOCIATED

ENGINEERING, LLC

CIVIL ENGINEERING • LAND SURVEYING

LAND PLANNING

103 SOUTH CHURCH STREET • P.O. BOX 1462

JONESBORO, AR 72403

PH: 870-932-3594 • FAX: 870-935-1263

NO.	DESCRIPTION	DATE

TOPOGRAPHIC

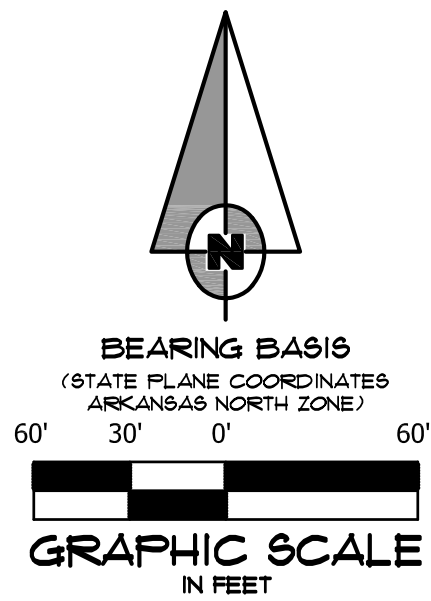
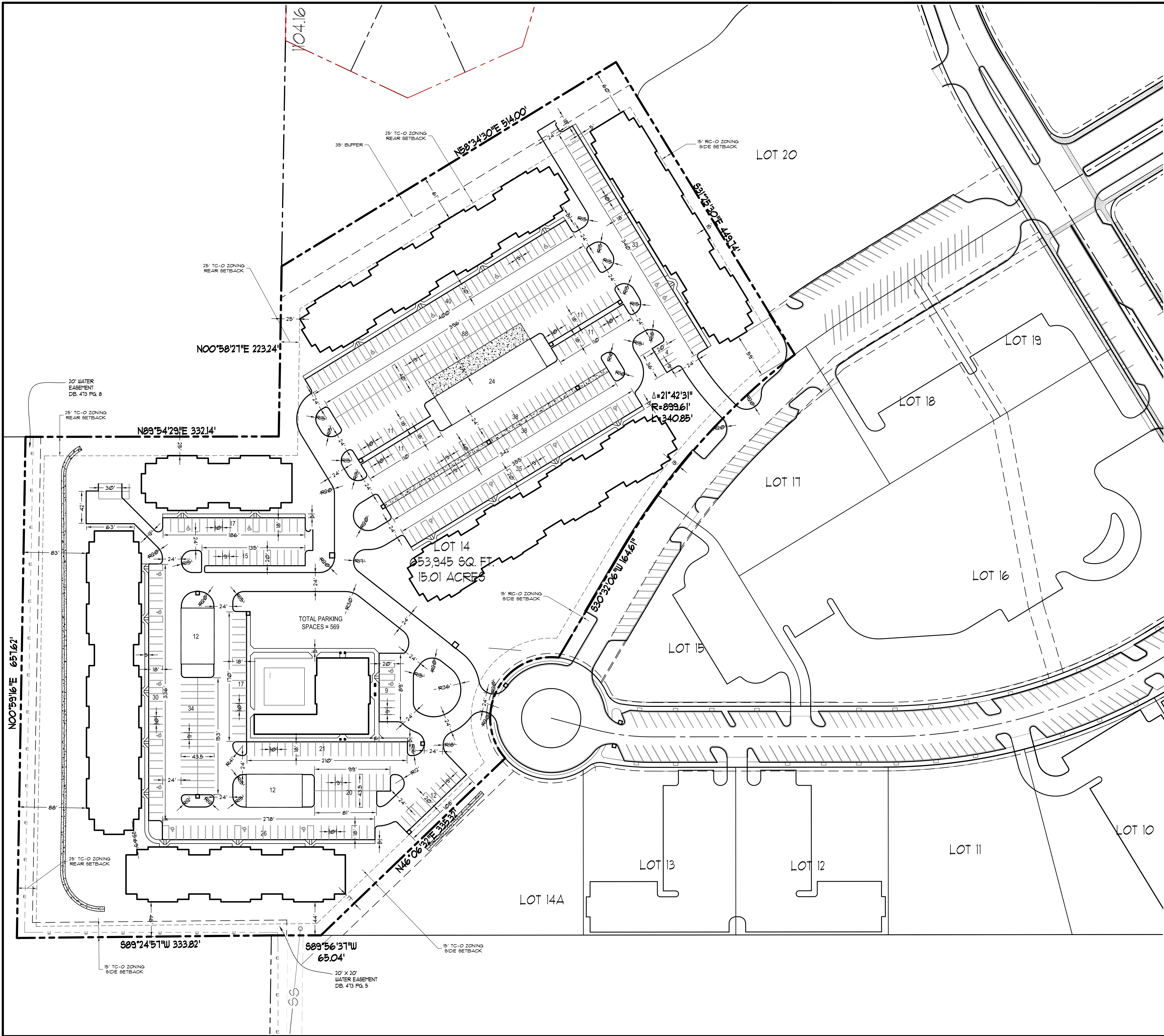
SKETCH

DATE: 09/13/2017 DRAIN: CCH

CADD FILE: 17107-SDP CHECKED: JME

DWG#: 0414091.000X SHEET

SCALE: 1" = 60' C003

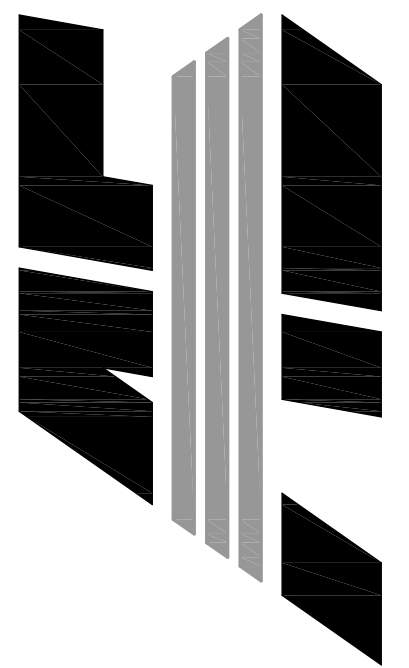


ENGINEER'S NOTES

1. PARKING SPACES PROVIDED: 569 REGULAR SPACES PLUS 24 HANDICAP ACCESSIBLE.
2. BUILDING LAYOUT BASED ON ARCHITECT PLANS.
3. ALL DIMENSIONS ARE TO THE FACE OF CURB, UNLESS OTHERWISE NOTED.
4. ALL CURB RETURN RADII SHALL BE 5' UNLESS OTHERWISE NOTED.
5. FOR BENCHMARK LOCATION AND ELEVATION PLEASE REFER TO BENCHMARK LISTINGS ON SHEET 2 OF THESE PLANS.
6. PROJECT SITE IS CURRENTLY VACANT.
7. REMOVE AND DISPOSE OF ALL DEBRIS AND OTHER MATERIAL AS SHOWN IN ACCORDANCE WITH ALL LOCAL, STATE AND/OR FEDERAL REGULATIONS.
8. ACCESS ALONG ROADWAY SHALL BE MAINTAINED AT ALL TIMES. CONSTRUCTION IN CITY, COUNTY OR STATE RIGHT OF WAY SHALL BE COORDINATED WITH THE RESPECTIVE AUTHORITY.
9. TAKE ALL PRECAUTIONS NECESSARY TO AVOID PROPERTY DAMAGE TO ADJACENT PROPERTIES. THE CONTRACTOR SHALL GIVE AFFECTED PROPERTY OWNERS SUFFICIENT NOTICE PRIOR TO CONSTRUCTION OPERATIONS.

LOT 14
THE LANDING
GREENSBOROUGH VILLAGE
JONESBORO, ARKANSAS

ASSOCIATED
ENGINEERING, LLC
CIVIL ENGINEERING • LAND SURVEYING
LAND PLANNING
103 SOUTH CHURCH STREET • P.O. BOX 1462
JONESBORO, AR 72403
PH: 870-932-3594 • FAX: 870-935-1263



NO.	DESCRIPTION	DATE

SITE
PLAN

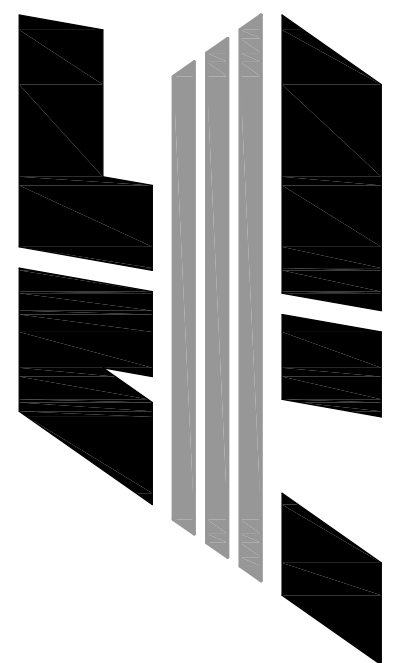
DATE: 09/13/2017	DRAWN: CCH
CADD FILE: 17107.SDP	CHECKED: JME
DWG#: 0414091.000X	SHEET
SCALE: 1" = 60'	C004

GENERAL UTILITY NOTES

- ELEVATIONS SHOWN HEREON ARE IN FEET AND DECIMAL PARTS THEREOF AND REFER TO MSL DATUM.
- FOR BENCHMARK LOCATION AND ELEVATION, PLEASE REFER TO BENCHMARK LISTINGS ON SHEET 2 OF THESE PLANS.
- PIPE DISTANCE SHOWN ARE TO CENTER OF STRUCTURES.
- 2,810 L.F. 12" SDR-26 PVC SEWER PIPE
3,066 L.F. 8" C-900 PVC WATER PIPE
- ALL WATER LINES SHALL BE 8" C-900 WITH 42" MIN. COVER. VALVES, CONNECTIONS AND RELATED APPURTENANCES SHALL BE IN ACCORDANCE WITH NFPA STANDARDS, CITY WATER & LIGHT UTILITIES SPECIFICATION AS WELL AS THE CITY OF JONESBORO AND INSTALLED WITH REQUIRED BEDDING AND THRUST BLOCKING.
- WATER PRESSURE
STATIC PRESSURE - XX PSI
RESIDUAL PRESSURE - XX PSI
- CONSTRUCTION SHALL NOT START ON ANY PUBLIC UTILITY SYSTEM UNTIL WRITTEN APPROVAL HAS BEEN RECEIVED BY THE ENGINEER FROM THE APPROPRIATE GOVERNING AUTHORITY AND CONTRACTOR HAS BEEN NOTIFIED BY THE OWNER'S REPRESENTATIVE.
- THE CONTRACTOR SHALL NOTIFY ALL AFFECTED UTILITY COMPANIES AT LEAST 48 HOURS PRIOR TO COMMENCEMENT OF ANY WORK.
- EXCAVATE AND VERIFY ALL UTILITY CROSSINGS AND INFORM THE OWNER'S REPRESENTATIVE OF ANY CONFLICT OR REQUIRED DEVIATION FROM THE PLAN. NOTIFICATION SHALL BE MADE A MINIMUM OF 48 HOURS PRIOR TO CONSTRUCTION.
- WHERE SEWER LINES PASS WITHIN 2 FT. VERTICALLY OF WATER LINES, THE SEWER LINE SHALL BE ENCASED IN WATERTIGHT PIPE (SEE PART XIV.A OF ADH RULES AND REGULATIONS PERTAINING TO PWS).
- WATER LINES AND STORM SEWER CROSSINGS SHALL MAINTAIN 36" MIN. SEPARATION IN ALL DIRECTIONS.
- THE INSTALLER OF THE SANITARY SEWER DISPOSAL SYSTEM MUST BE LICENSED IN THE STATE OF ARKANSAS TO INSTALL LOW PRESSURE PIPE SYSTEMS.
- WATER AND SEWER LINES SHALL MAINTAIN 10 FEET HORIZONTAL SEPARATION.
- THE SITE SHALL BE CONSTRUCTED TO SUBGRADE AND ALL PROPOSED FILLS SHALL BE MADE AND COMPACTED PRIOR TO CONSTRUCTION OF UTILITIES
- LOCATION OF UTILITIES SHOWN ON PLANS ARE APPROXIMATE ONLY. EXACT LOCATIONS SHALL BE DETERMINED IN THE FIELD BY THE CONTRACTOR.
- THE CONTRACTOR SHALL PROVIDE ALL NECESSARY PROTECTIVE MEASURES TO SAFEGUARD UTILITIES AND STRUCTURES FROM DAMAGE DURING CONSTRUCTION. THE COSTS OF SUCH PROTECTION IS INCLUDED IN THE BASE BID.

LOT 14
THE LANDING
AT GREENSBOROUGH VILLAGE
JONESBORO, ARKANSAS

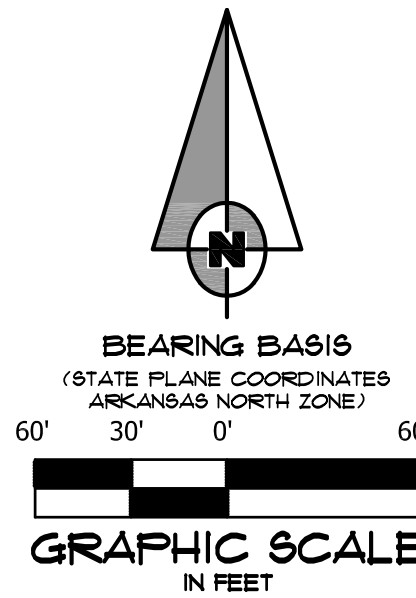
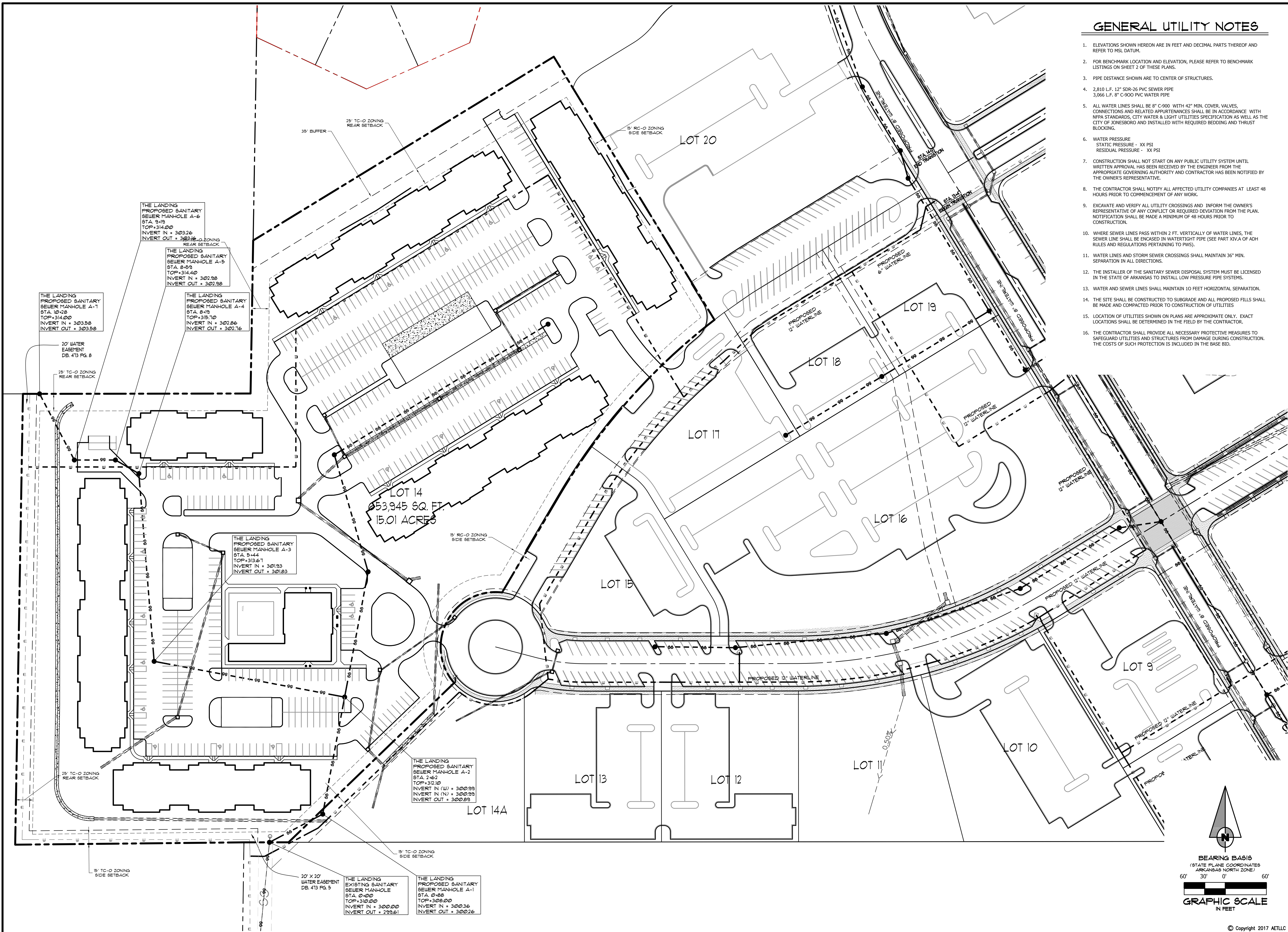
ASSOCIATED
ENGINEERING, LLC
CIVIL ENGINEERING • LAND SURVEYING
LAND PLANNING
103 SOUTH CHURCH STREET • P.O. BOX 1462
JONESBORO, AR 72403
PH: 870-932-3594 • FAX: 870-935-1263

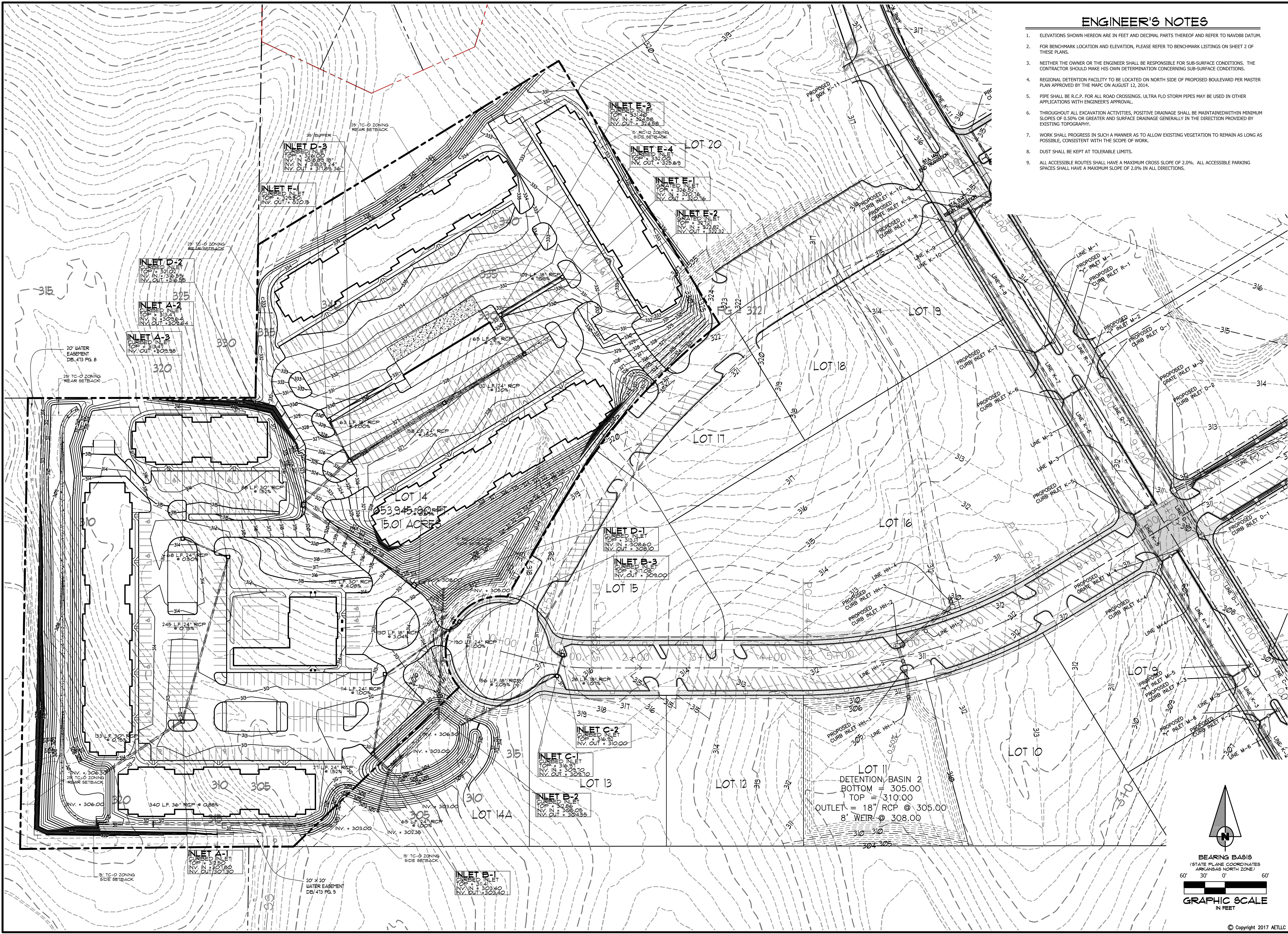


NO.	DESCRIPTION	DATE

UTILITY
LAYOUT

DATE: 09/13/2017	DRAWN: CCH
CADD FILE: 17107.SDP	CHECKED: JME
DWG#: 0414091.000X	SHEET
SCALE: 1" = 60'	C005



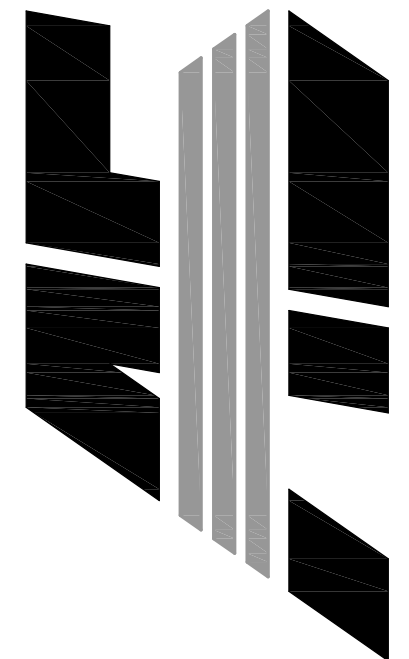


ENGINEER'S NOTES

- ELEVATIONS SHOWN HEREON ARE IN FEET AND DECIMAL PARTS THEREOF AND REFER TO NAVD83 DATUM.
- FOR BENCHMARK LOCATION AND ELEVATION, PLEASE REFER TO BENCHMARK LISTINGS ON SHEET 2 OF THESE PLANS.
- NEITHER THE OWNER OR THE ENGINEER SHALL BE RESPONSIBLE FOR SUB-SURFACE CONDITIONS. THE CONTRACTOR SHOULD MAKE HIS OWN DETERMINATION CONCERNING SUB-SURFACE CONDITIONS.
- REGIONAL DETENTION FACILITY TO BE LOCATED ON NORTH SIDE OF PROPOSED BOULEVARD PER MASTER PLAN APPROVED BY THE MAPC ON AUGUST 12, 2014.
- PIPE SHALL BE R.C.P. FOR ALL ROAD CROSSINGS. ULTRA FLO STORM PIPES MAY BE USED IN OTHER APPLICATIONS WITH ENGINEER'S APPROVAL.
- THROUGHOUT ALL EXCAVATION ACTIVITIES, POSITIVE DRAINAGE SHALL BE MAINTAINED WITHIN MINIMUM SLOPES OF 0.50% OR GREATER AND SURFACE DRAINAGE GENERALLY IN THE DIRECTION PROVIDED BY EXISTING TOPOGRAPHY.
- WORK SHALL PROGRESS IN SUCH A MANNER AS TO ALLOW EXISTING VEGETATION TO REMAIN AS LONG AS POSSIBLE, CONSISTENT WITH THE SCOPE OF WORK.
- DUST SHALL BE KEPT AT TOLERABLE LIMITS.
- ALL ACCESSIBLE ROUTES SHALL HAVE A MAXIMUM CROSS SLOPE OF 2.0%. ALL ACCESSIBLE PARKING SPACES SHALL HAVE A MAXIMUM SLOPE OF 2.0% IN ALL DIRECTIONS.

LOT 14
THE LANDING
AT GREENSBOROUGH VILLAGE
JONESBORO, ARKANSAS

ASSOCIATED
ENGINEERING, LLC
CIVIL ENGINEERING • LAND SURVEYING
LAND PLANNING
103 SOUTH CHURCH STREET • P.O. BOX 1462
JONESBORO, AR 72403
PH: 870-932-3594 • FAX: 870-935-1263

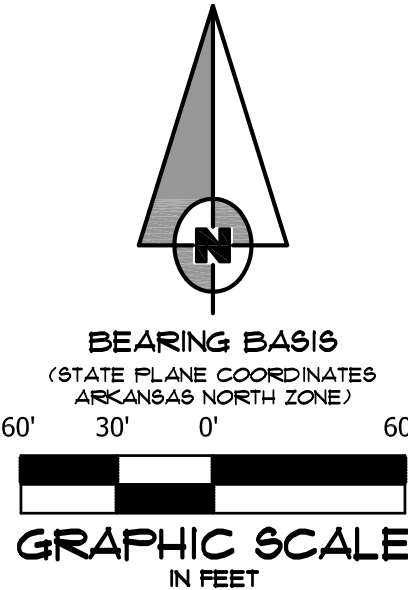


PRELIMINARY

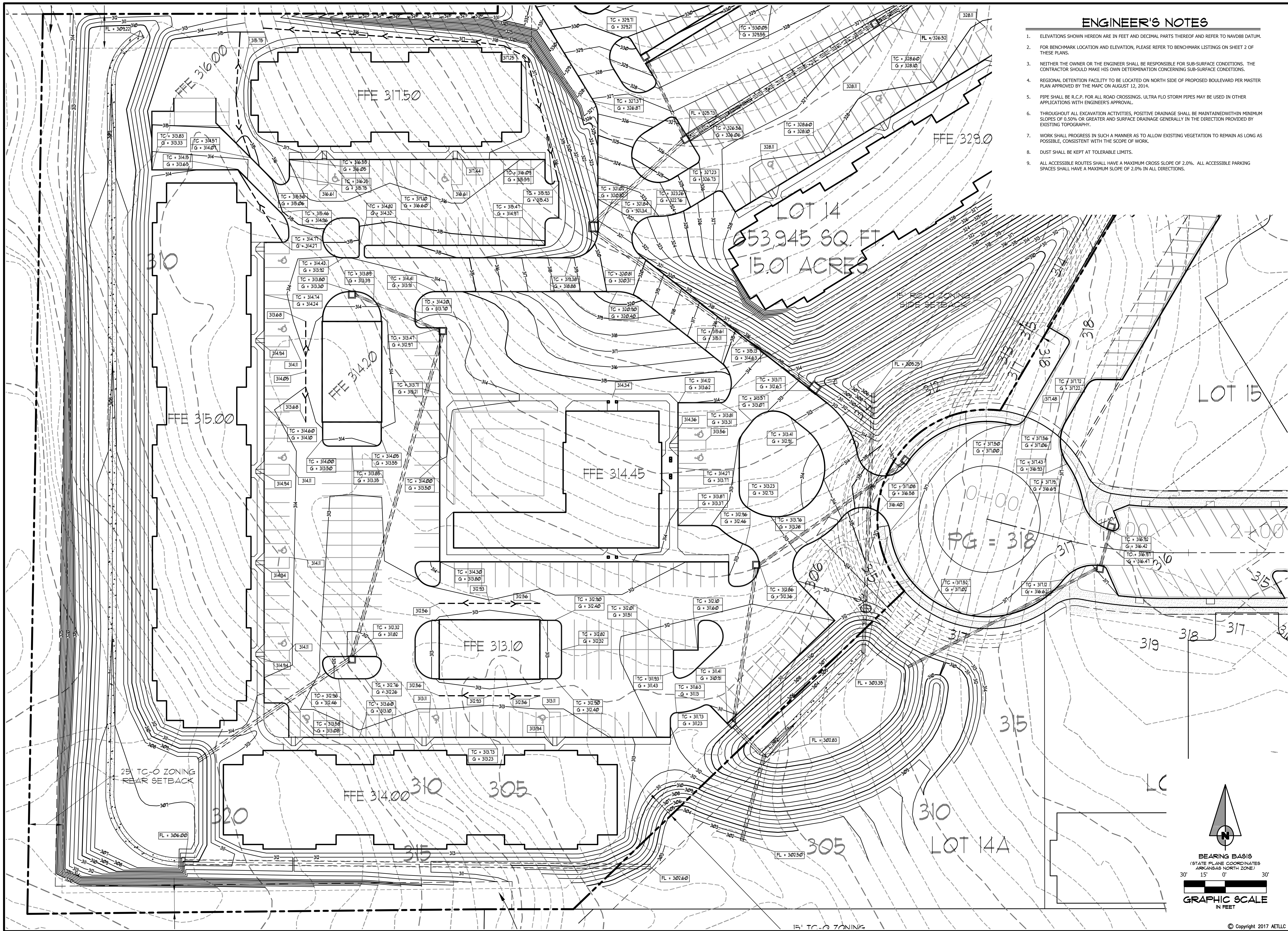
NO.	DESCRIPTION	DATE

GRADING PLAN
OVERALL

DATE: 09/13/2017	DRAWN: CCH
CADD FILE: 17107.SDP	CHECKED: JME
DWG#: 0414091.000X	SHEET
SCALE: 1" = 60'	C006



© Copyright 2017 AETLC

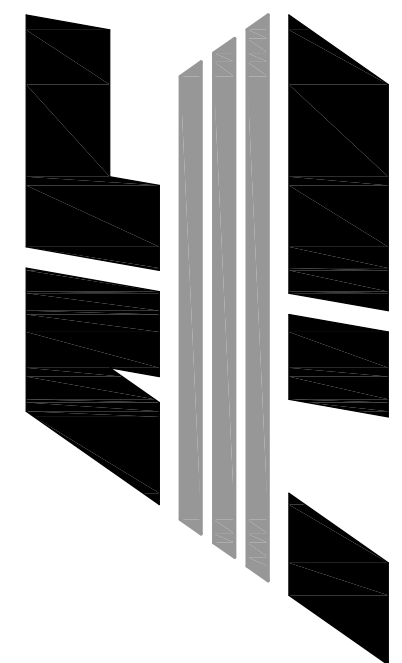


ENGINEER'S NOTES

- ELEVATIONS SHOWN HEREON ARE IN FEET AND DECIMAL PARTS THEREOF AND REFER TO NAVD83 DATUM.
- FOR BENCHMARK LOCATION AND ELEVATION, PLEASE REFER TO BENCHMARK LISTINGS ON SHEET 2 OF THESE PLANS.
- NEITHER THE OWNER OR THE ENGINEER SHALL BE RESPONSIBLE FOR SUB-SURFACE CONDITIONS. THE CONTRACTOR SHOULD MAKE HIS OWN DETERMINATION CONCERNING SUB-SURFACE CONDITIONS.
- REGIONAL DETENTION FACILITY TO BE LOCATED ON NORTH SIDE OF PROPOSED BOULEVARD PER MASTER PLAN APPROVED BY THE MAPC ON AUGUST 12, 2014.
- PIPE SHALL BE R.C.P. FOR ALL ROAD CROSSINGS. ULTRA FLO STORM PIPES MAY BE USED IN OTHER APPLICATIONS WITH ENGINEER'S APPROVAL.
- THROUGHOUT ALL EXCAVATION ACTIVITIES, POSITIVE DRAINAGE SHALL BE MAINTAINED WITHIN MINIMUM SLOPES OF 0.50% OR GREATER AND SURFACE DRAINAGE GENERALLY IN THE DIRECTION PROVIDED BY EXISTING TOPOGRAPHY.
- WORK SHALL PROGRESS IN SUCH A MANNER AS TO ALLOW EXISTING VEGETATION TO REMAIN AS LONG AS POSSIBLE, CONSISTENT WITH THE SCOPE OF WORK.
- DUST SHALL BE KEPT AT TOLERABLE LIMITS.
- ALL ACCESSIBLE ROUTES SHALL HAVE A MAXIMUM CROSS SLOPE OF 2.0%. ALL ACCESSIBLE PARKING SPACES SHALL HAVE A MAXIMUM SLOPE OF 2.0% IN ALL DIRECTIONS.

LOT 14
THE LANDING
AT GREENSBOROUGH VILLAGE
JONESBORO, ARKANSAS

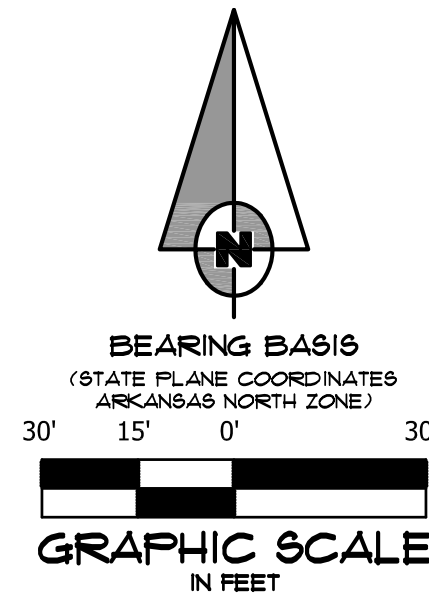
ASSOCIATED
ENGINEERING, LLC
CIVIL ENGINEERING • LAND SURVEYING
LAND PLANNING
103 SOUTH CHURCH STREET • P.O. BOX 1462
JONESBORO, AR 72403
PH: 870-932-3594 • FAX: 870-935-1263



NO.	DESCRIPTION	DATE

GRADING PLAN WEST

DATE: 09/13/2017	DRAWN: CCH
CADD FILE: 17107.SDP	CHECKED: JME
DWG# 0414091.000XX	SHEET
SCALE: 1" = 30'	C006A



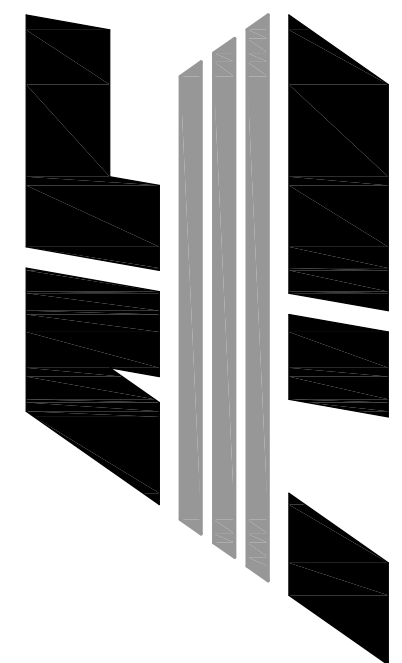


ENGINEER'S NOTES

- ELEVATIONS SHOWN HEREON ARE IN FEET AND DECIMAL PARTS THEREOF AND REFER TO NAVD83 DATUM.
- FOR BENCHMARK LOCATION AND ELEVATION, PLEASE REFER TO BENCHMARK LISTINGS ON SHEET 2 OF THESE PLANS.
- NEITHER THE OWNER OR THE ENGINEER SHALL BE RESPONSIBLE FOR SUB-SURFACE CONDITIONS. THE CONTRACTOR SHOULD MAKE HIS OWN DETERMINATION CONCERNING SUB-SURFACE CONDITIONS.
- REGIONAL DETENTION FACILITY TO BE LOCATED ON NORTH SIDE OF PROPOSED BOULEVARD PER MASTER PLAN APPROVED BY THE MAPC ON AUGUST 12, 2014.
- PIPE SHALL BE R.C.P. FOR ALL ROAD CROSSINGS. ULTRA FLO STORM PIPES MAY BE USED IN OTHER APPLICATIONS WITH ENGINEER'S APPROVAL.
- THROUGHOUT ALL EXCAVATION ACTIVITIES, POSITIVE DRAINAGE SHALL BE MAINTAINED WITHIN MINIMUM SLOPES OF 0.50% OR GREATER AND SURFACE DRAINAGE GENERALLY IN THE DIRECTION PROVIDED BY EXISTING TOPOGRAPHY.
- WORK SHALL PROGRESS IN SUCH A MANNER AS TO ALLOW EXISTING VEGETATION TO REMAIN AS LONG AS POSSIBLE, CONSISTENT WITH THE SCOPE OF WORK.
- DUST SHALL BE KEPT AT TOLERABLE LIMITS.
- ALL ACCESSIBLE ROUTES SHALL HAVE A MAXIMUM CROSS SLOPE OF 2.0%. ALL ACCESSIBLE PARKING SPACES SHALL HAVE A MAXIMUM SLOPE OF 2.0% IN ALL DIRECTIONS.

LOT 14
THE LANDING
AT GREENSBOROUGH VILLAGE
JONESBORO, ARKANSAS

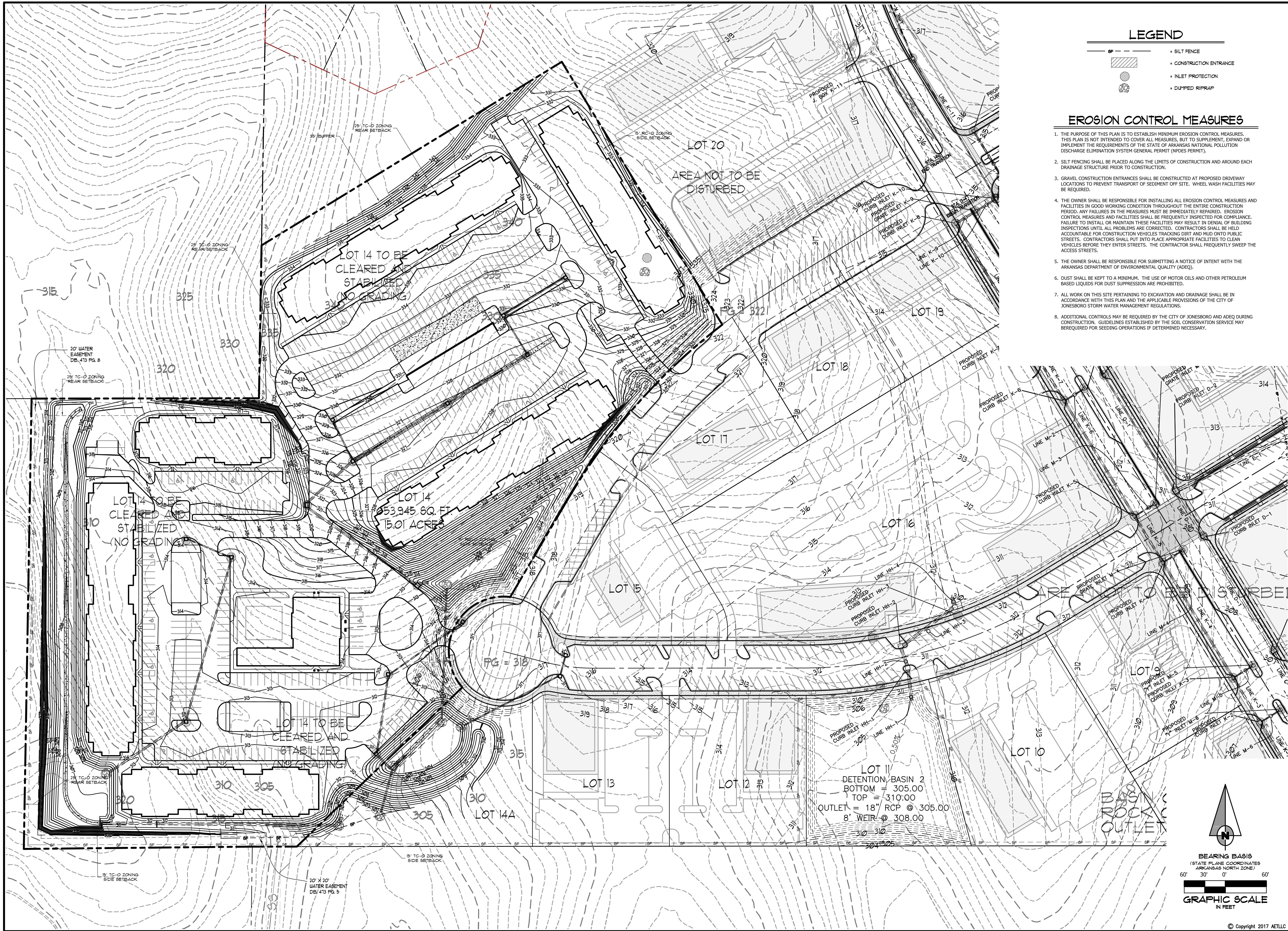
ASSOCIATED
ENGINEERING, LLC
CIVIL ENGINEERING • LAND SURVEYING
LAND PLANNING
103 SOUTH CHURCH STREET • P.O. BOX 1462
JONESBORO, AR 72403
PH: 870-932-3594 • FAX: 870-935-1263



NO.	DESCRIPTION	DATE

GRADING PLAN EAST

DATE: 09/13/2017	DRAWN: CCH
CADD FILE: 17107.SDP	CHECKED: JME
DWG# 0414091.000X	SHEET
SCALE: 1" = 30'	C006B



- LEGEND**
- SILT FENCE
 - CONSTRUCTION ENTRANCE
 - INLET PROTECTION
 - DUMPED RIPRAP
- EROSION CONTROL MEASURES**
- THE PURPOSE OF THIS PLAN IS TO ESTABLISH MINIMUM EROSION CONTROL MEASURES. THIS PLAN IS NOT INTENDED TO COVER ALL MEASURES, BUT TO SUPPLEMENT, EXPAND OR IMPLEMENT THE REQUIREMENTS OF THE STATE OF ARKANSAS NATIONAL POLLUTION DISCHARGE ELIMINATION SYSTEM GENERAL PERMIT (NPDES PERMIT).
 - SILT FENCING SHALL BE PLACED ALONG THE LIMITS OF CONSTRUCTION AND AROUND EACH DRAINAGE STRUCTURE PRIOR TO CONSTRUCTION.
 - GRAVEL CONSTRUCTION ENTRANCES SHALL BE CONSTRUCTED AT PROPOSED DRIVEWAY LOCATIONS TO PREVENT TRANSPORT OF SEDIMENT OFF SITE. WHEEL WASH FACILITIES MAY BE REQUIRED.
 - THE OWNER SHALL BE RESPONSIBLE FOR INSTALLING ALL EROSION CONTROL MEASURES AND FACILITIES IN GOOD WORKING CONDITION THROUGHOUT THE ENTIRE CONSTRUCTION PERIOD. ANY FAILURES IN THE MEASURES MUST BE IMMEDIATELY REPAIRED. EROSION CONTROL MEASURES AND FACILITIES SHALL BE FREQUENTLY INSPECTED FOR COMPLIANCE. FAILURE TO INSTALL OR MAINTAIN THESE FACILITIES MAY RESULT IN DENIAL OF BUILDING INSPECTIONS UNTIL ALL PROBLEMS ARE CORRECTED. CONTRACTORS SHALL BE HELD ACCOUNTABLE FOR CONSTRUCTION VEHICLES TRACKING DIRT AND MUD ONTO PUBLIC STREETS. CONTRACTORS SHALL PUT INTO PLACE APPROPRIATE FACILITIES TO CLEAN VEHICLES BEFORE THEY ENTER STREETS. THE CONTRACTOR SHALL FREQUENTLY SWEEP THE ACCESS STREETS.
 - THE OWNER SHALL BE RESPONSIBLE FOR SUBMITTING A NOTICE OF INTENT WITH THE ARKANSAS DEPARTMENT OF ENVIRONMENTAL QUALITY (ADEQ).
 - DUST SHALL BE KEPT TO A MINIMUM. THE USE OF MOTOR OILS AND OTHER PETROLEUM BASED LIQUIDS FOR DUST SUPPRESSION ARE PROHIBITED.
 - ALL WORK ON THIS SITE PERTAINING TO EXCAVATION AND DRAINAGE SHALL BE IN ACCORDANCE WITH THIS PLAN AND THE APPLICABLE PROVISIONS OF THE CITY OF JONESBORO STORM WATER MANAGEMENT REGULATIONS.
 - ADDITIONAL CONTROLS MAY BE REQUIRED BY THE CITY OF JONESBORO AND ADEQ DURING CONSTRUCTION. GUIDELINES ESTABLISHED BY THE SOIL CONSERVATION SERVICE MAY BE REQUIRED FOR SEEDING OPERATIONS IF DETERMINED NECESSARY.

LOT 14
THE LANDING
AT GREENSBOROUGH VILLAGE
JONESBORO, ARKANSAS

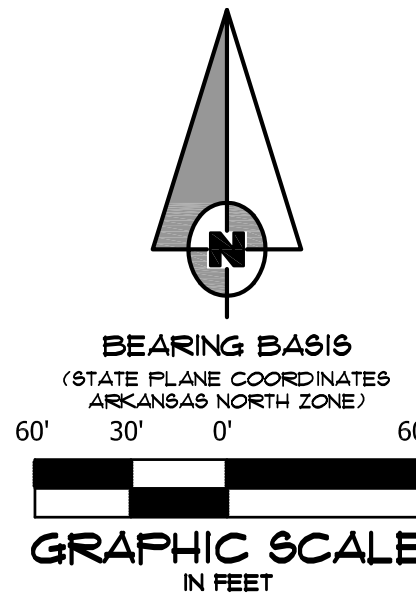
**ASSOCIATED
ENGINEERING, LLC**
CIVIL ENGINEERING • LAND SURVEYING
LAND PLANNING
103 SOUTH CHURCH STREET • P.O. BOX 1462
JONESBORO, AR 72403
PH: 870-932-3594 • FAX: 870-935-1263

Associated
Engineering &
Testing, LLC
NO. 289
STATE OF ARKANSAS

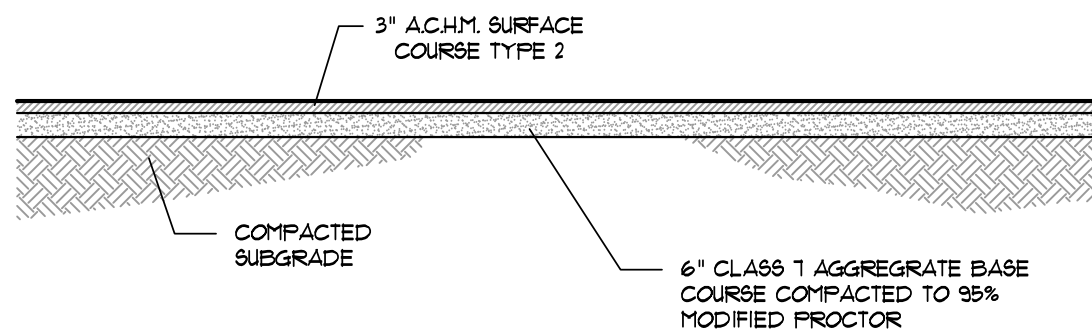
NO.	DESCRIPTION	DATE

**EROSION CONTROL
PLAN**

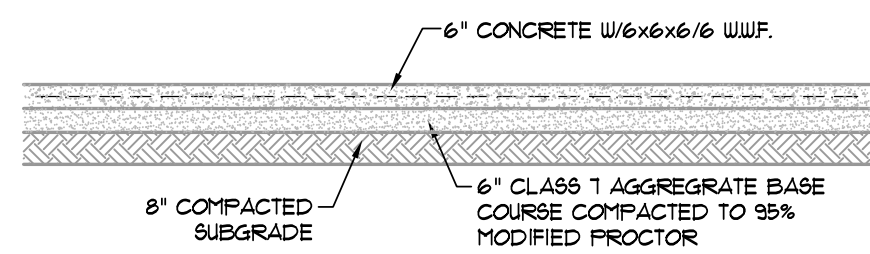
DATE: 09/13/2017	DRAWN: CCH
CADD FILE: 17107.SDP	CHECKED: JME
DWG#: 0414091.000X	SHEET
SCALE: 1" = 60'	C007



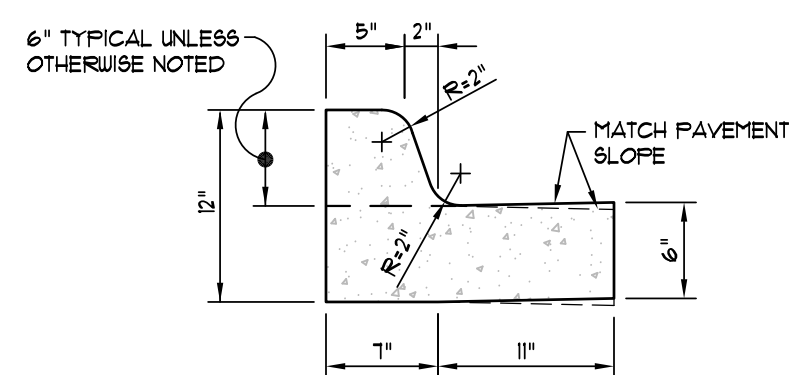
© Copyright 2017 AETLC



SECTION - ASPHALT PARKING - LIGHT
N.T.S.

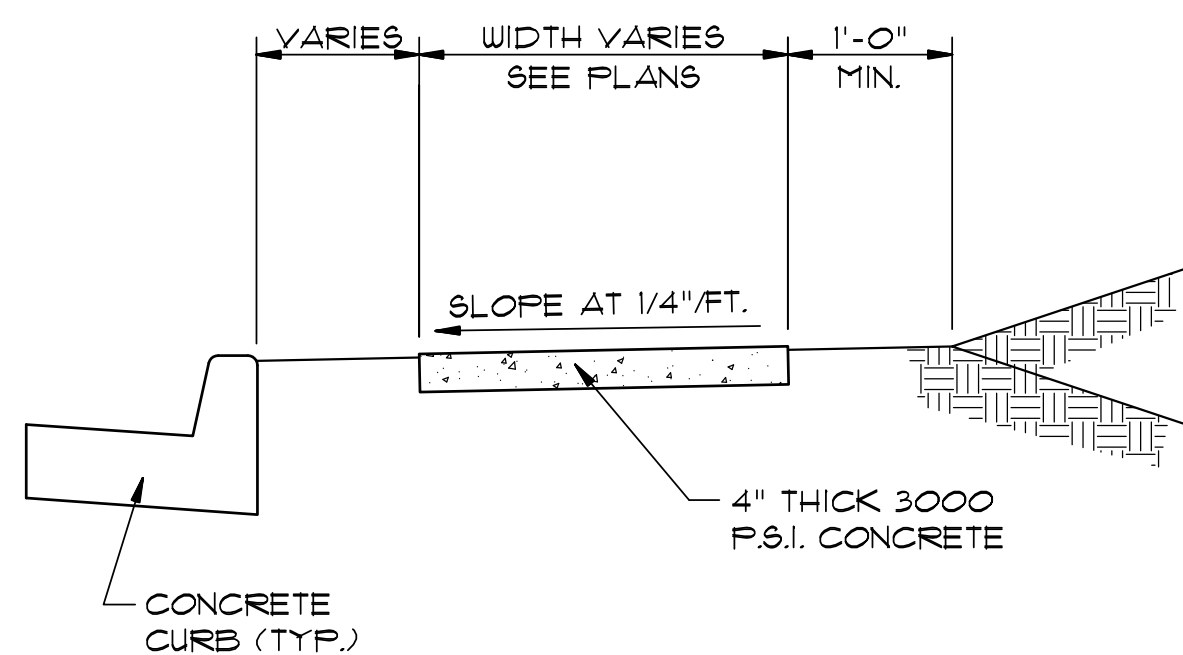


SECTION - CONCRETE PAVING - LIGHT
N.T.S.



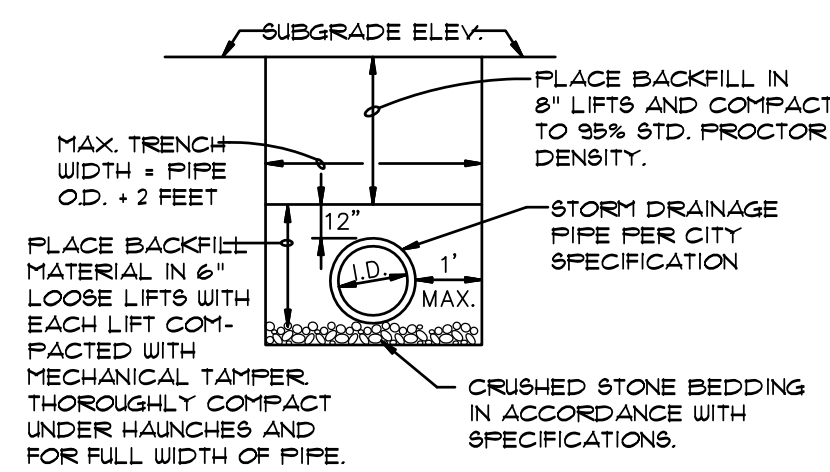
NOTE: CONTRACTION AND EXPANSION JOINTS SHALL BE CONSTRUCTED IN ACCORDANCE WITH THE PLANS AND SPECIFICATIONS.

TYPICAL CURB & GUTTER
TYPE "A-18"
(NOT TO SCALE)



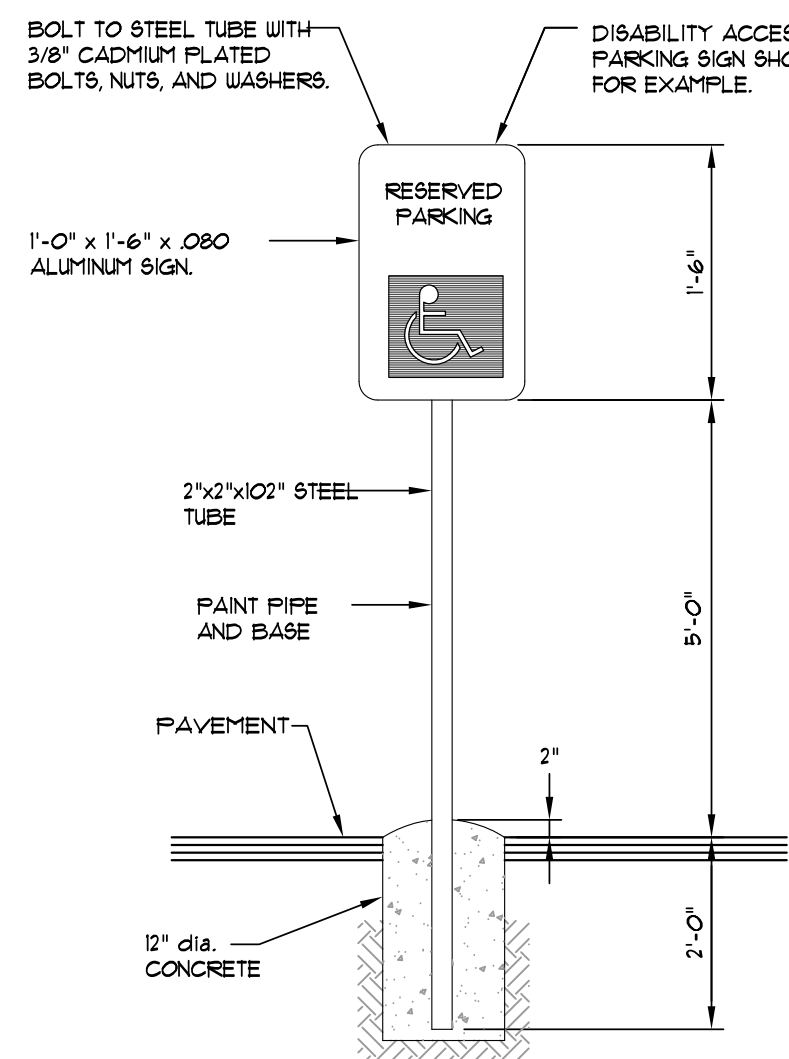
TYPICAL SECTION - SIDEWALK
N.T.S.

* MINIMUM WIDTH FOR SIDEWALK ADJACENT TO CURB IS 5' FOR CITY STREETS AND 6' FOR STATE OR U.S. HIGHWAYS.



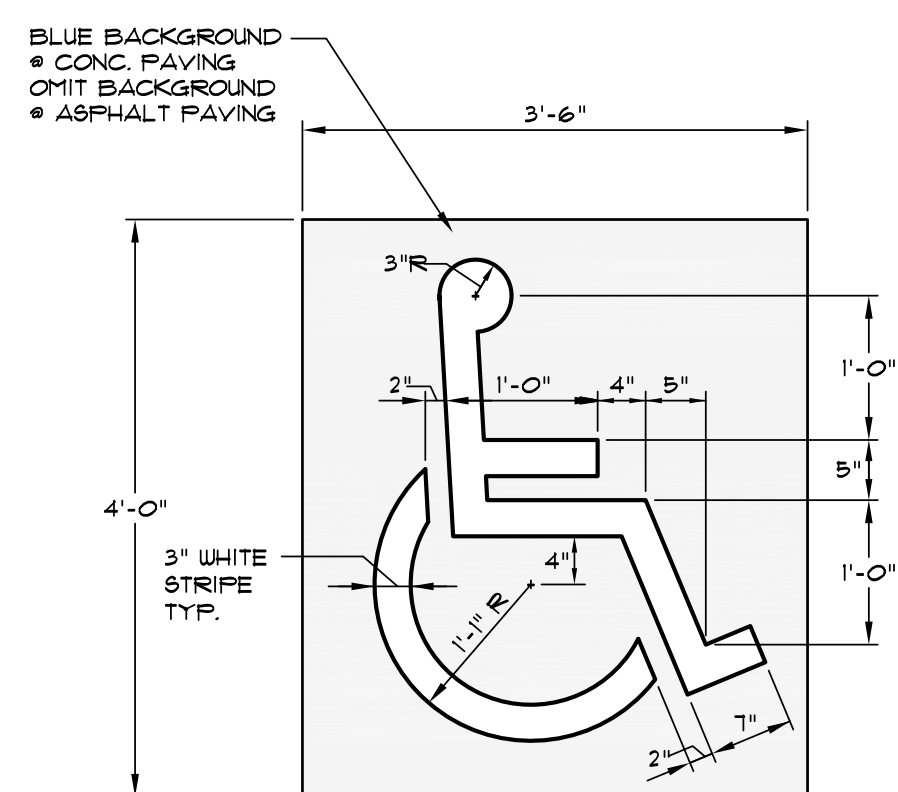
DRAINAGE PIPE
TRENCH DETAIL

NOTE: TO BE USED WITH NEW STREET CONSTRUCTION. SEE DRAWING NO. PT-1 FOR EXISTING STREET CUTS.

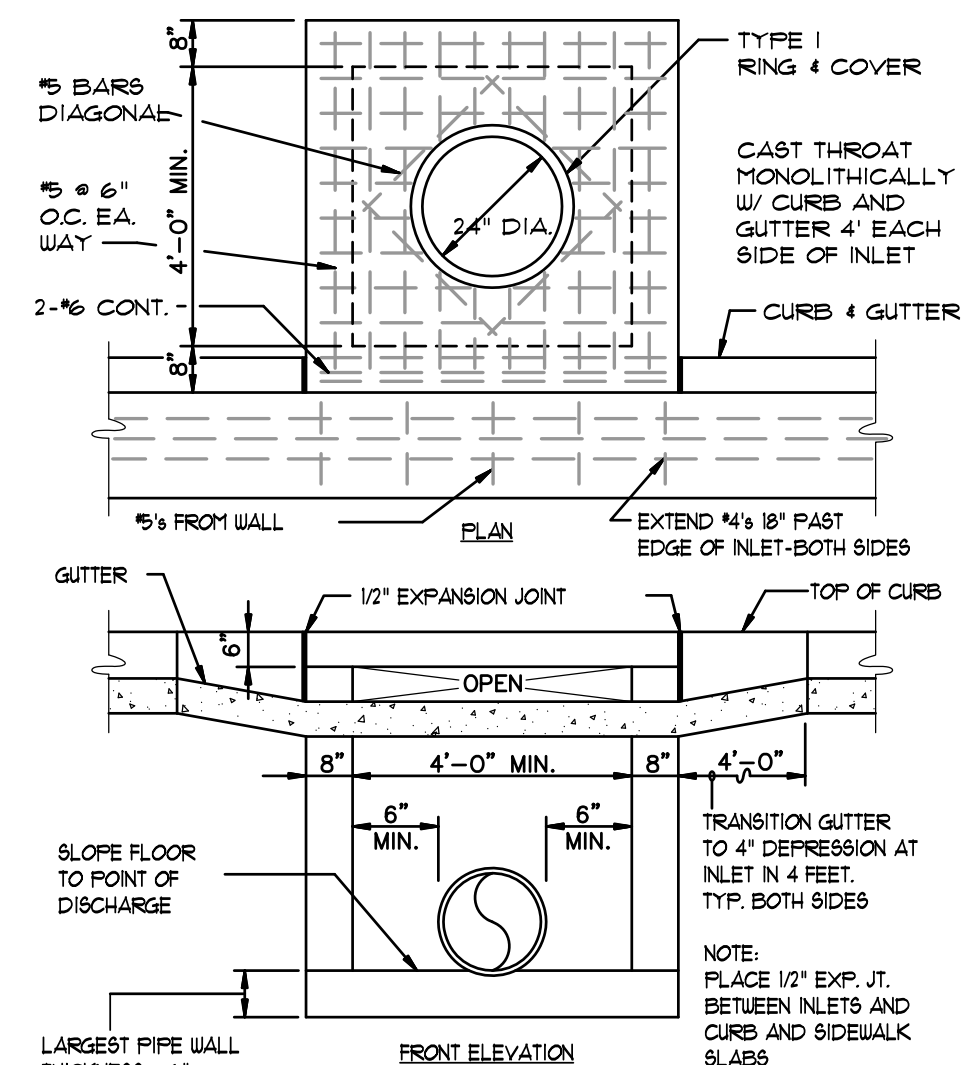


NOTE: ALL SIGNS SHALL CONFORM TO MUTCD AND SHALL BE HIGH INTENSITY.

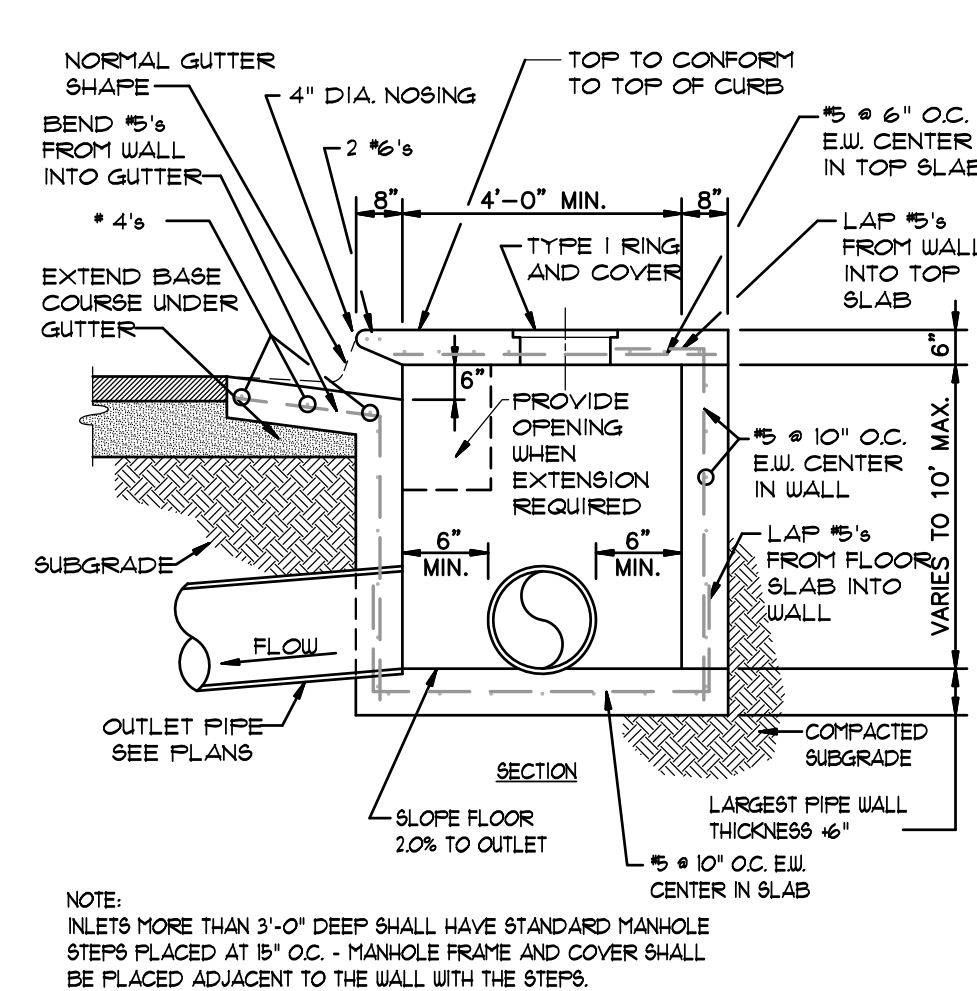
ADA SIGN DETAIL
SCALE: 1/2" = 1'-0"



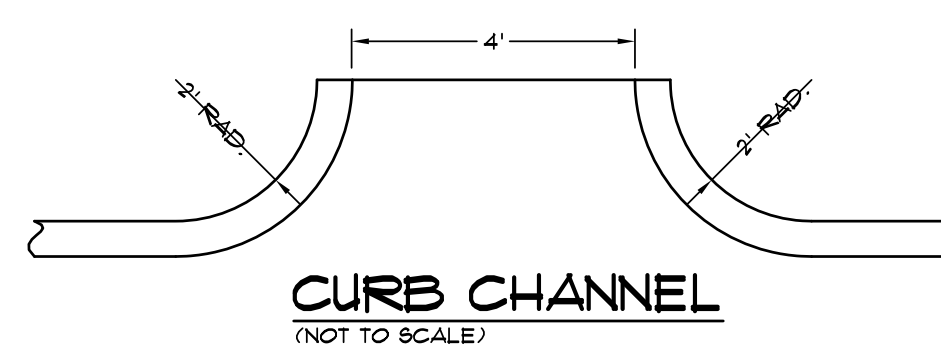
PARKING STALL SYMBOL
SCALE: 3/4" = 1'-0"



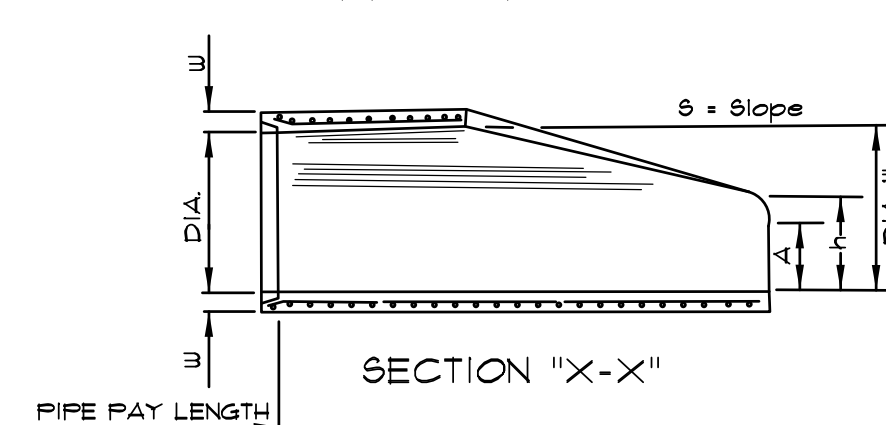
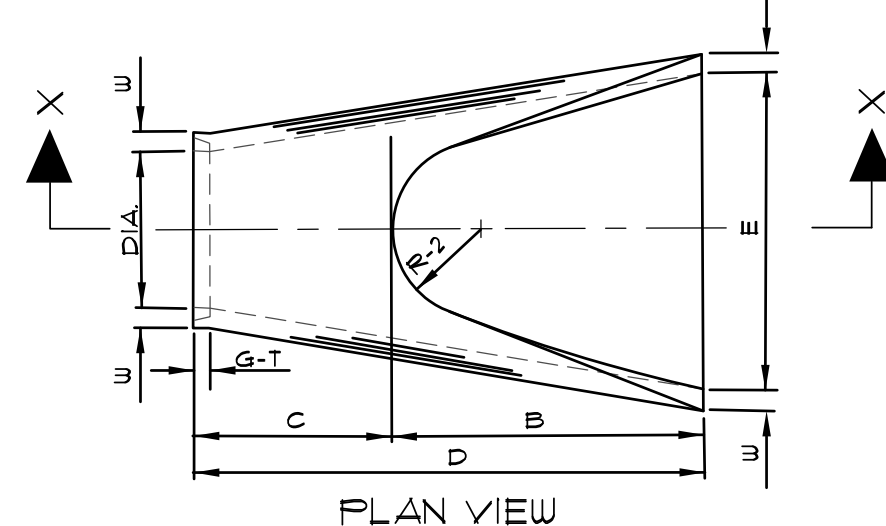
CURB INLET - TYPE "A"
(NOT TO SCALE)



NOTE: INLETS MORE THAN 3'-0" DEEP SHALL HAVE STANDARD MANHOLE STEPS PLACED AT 5' O.C. MANHOLE FRAME AND COVER SHALL BE PLACED ADJACENT TO THE WALL WITH THE STEPS.



CURB CHANNEL
(NOT TO SCALE)

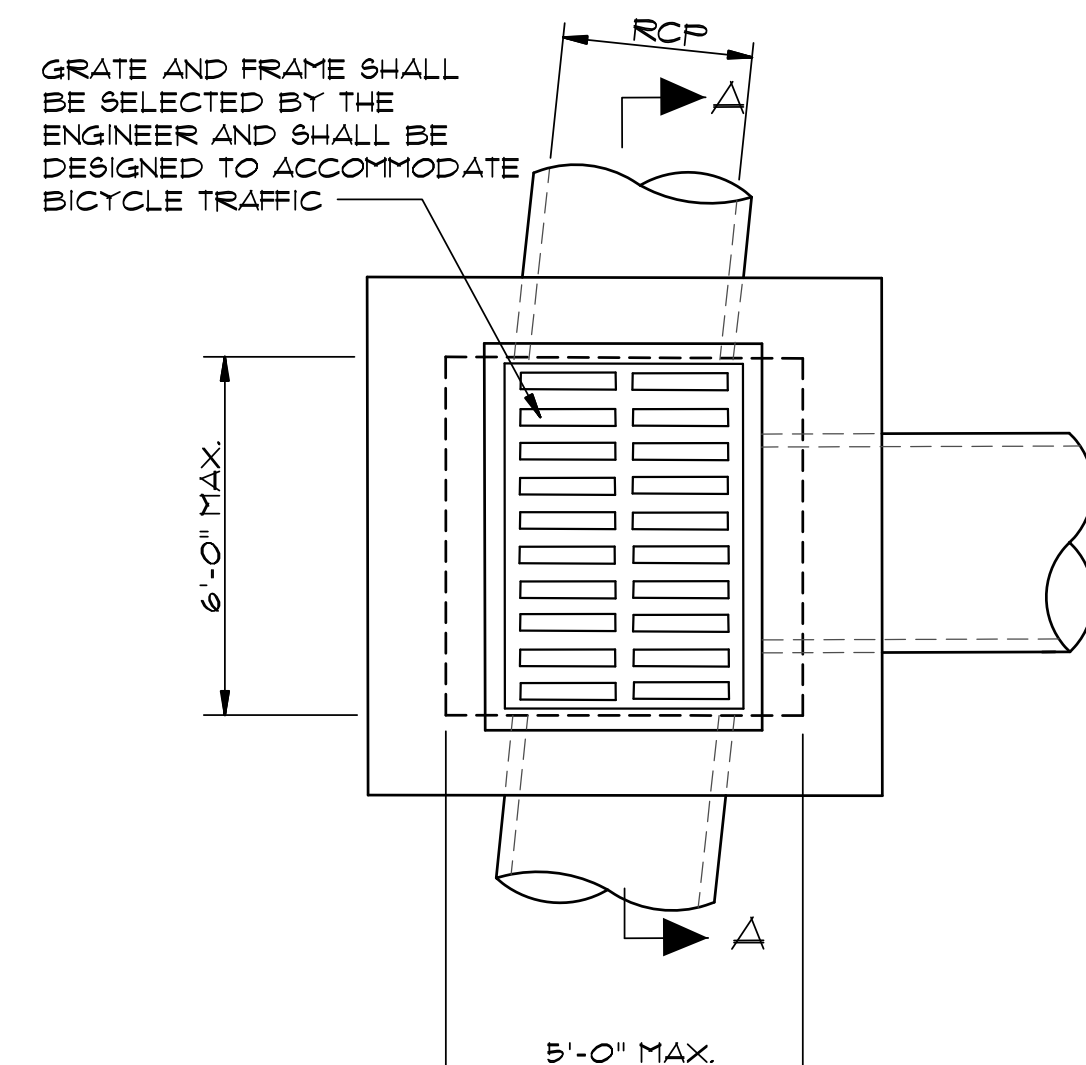


DIA.	WALL	A	B	C	D	E	S	DIA.+1"	P	R-1	R-2	G-T	WT	h
18"	2 1/2"	9"	2'-3"	3'-10"	6'-1"	3'-0"	3:1	19"	29"	15 1/2"	12"	2"	1000	1'-0 1/2"
24"	3"	9 1/2"	3'-7 1/2"	2'-6"	6'-1 1/2"	4'-0"	3:1	25"	33 3/16"	16 13/16"	14"	2 1/2"	1600	1'-1 1/2"
30"	3 1/2"	1'-0"	4'-6"	1'-7 3/4"	6'-1 3/4"	5'-0"	3:1	31"	37"	18 1/2"	15"	3 1/4"	1940	1'-4 5/8"
36"	4"	1'-3"	5'-3"	2'-10 3/4"	8'-1 3/4"	6'-0"	3:1	37"	47 13/16"	24 5/16"	20"	3 1/2"	4100	1'-8"
42"	4 1/2"	1'-9"	5'-3"	2'-11"	8'-2"	6'-6"	3:1	43"	53 7/8"	27 1/2"	22"	3 1/2"	5380	2'-2 1/2"
48"	5"	2'-0"	6'-0"	2'-2"	8'-2"	7'-0"	3:1	49"	58 1/2"	28 1/2"	22"	3 1/2"	6350	2'-6"
54"	5 1/2"	2'-4"	6'-6"	1'-10"	8'-4"	7'-6"	3:1	55"	65 1/2"	33 1/8"	24"	4"	8750	2'-10 1/2"
60"	6"	2'-10"	6'-6"	1'-10"	8'-4"	8'-0"	3:1	61"	72 1/2"	36 11/16"	24"	4"	9270	3'-5"
72"	7"	3'-10"	6'-6"	1'-10"	8'-4"	9'-0"	3:1	73"	77 13/16"	38 15/16"	24"	5"	13250	4'-6"

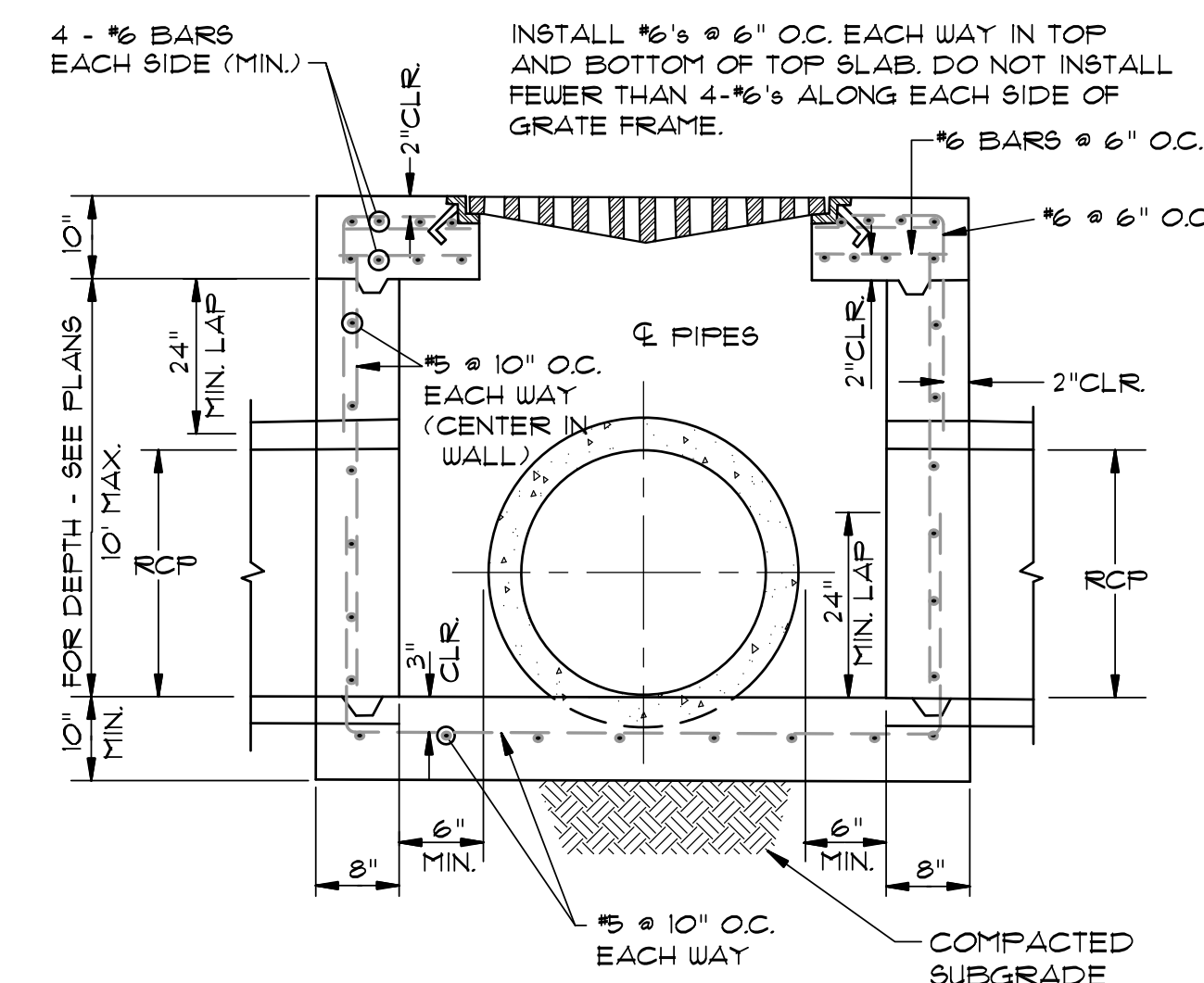
NOTES:

- THE PORTION OF THE R.C. CURTAIN WALL BENEATH THE FLARED END SECTION (LOWER 1'-0") SHALL BE PLACED MONOLITHICALLY. THE FLARED END SECTION SHALL THEN BE SET IN PLACE AND THE REMAINING PORTIONS OF THE R.C. CURTAIN WALL PLACED.
- ALL REINFORCING STEEL ARE #4 BARS AT 6" O.C.
- NO SEPARATE PAYMENT WILL BE MADE FOR THE CURTAIN WALLS. THEY SHALL BE CONSIDERED SUBSIDIARY TO THE FLARED END SECTIONS.
- TONGUE END ON UPSTREAM SECTION. GROOVE END ON DOWNSTREAM SECTION.

FLARED END SECTION DETAILS FOR
REINFORCED CONCRETE PIPE CULVERT
(NOT TO SCALE)



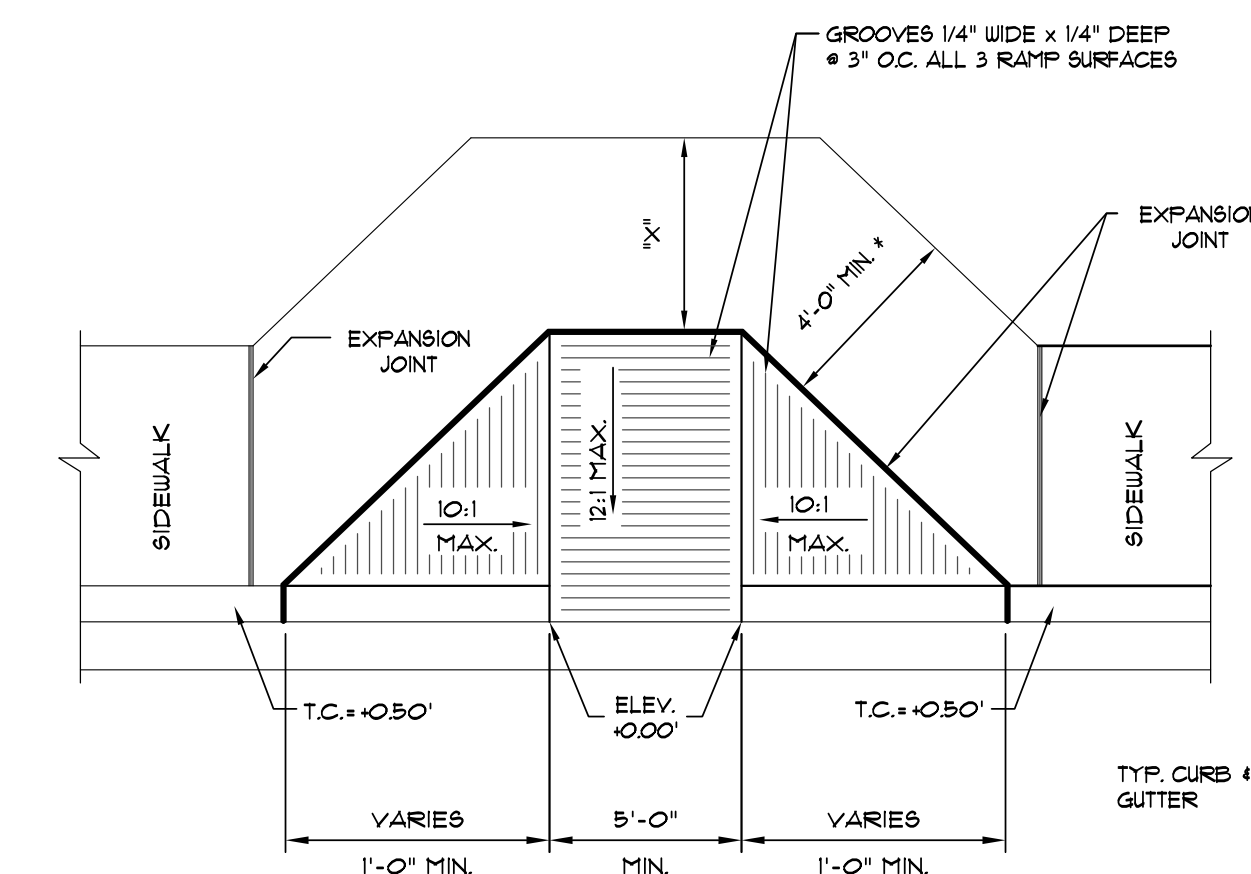
PLAN - GRATE INLET - HEAVY
N.T.S.



SECTION "A-A" - GRATE INLET - HEAVY
N.T.S.

NOTES:

- SHOULD BE USED TO ACCOMMODATE VEHICULAR TRAFFIC.
- JUNCTION BOXES MORE THAN 3 FEET DEEP SHALL HAVE STANDARD MANHOLE STEPS PLACED @ 15" O.C.
- SEE REINFORCING DETAIL FOR OPENING IN WALL OR SLAB.



* NOTE: IF "X" IS LESS THAN 48", AS APPROVED BY THE CITY, THEN THE SLOPE OF THE FLARED SIDE SHALL NOT EXCEED 12:1.

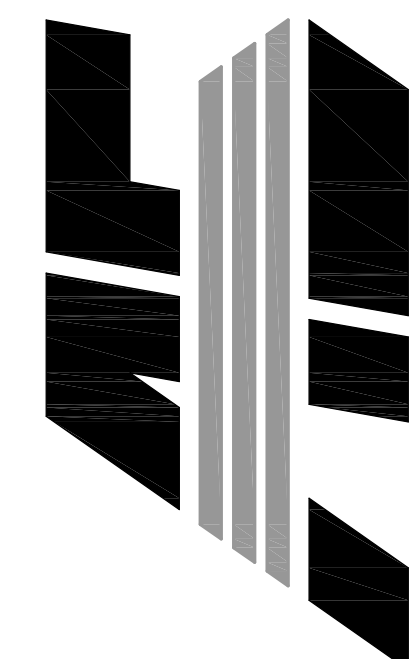
TYPE "A" ACCESS RAMP
NOT TO SCALE

LOT 14

THE LANDING
AT GREENSBOROUGH VILLAGE
JONESBORO, ARKANSAS

ASSOCIATED
ENGINEERING, LLC
CIVIL ENGINEERING • LAND SURVEYING
LAND PLANNING

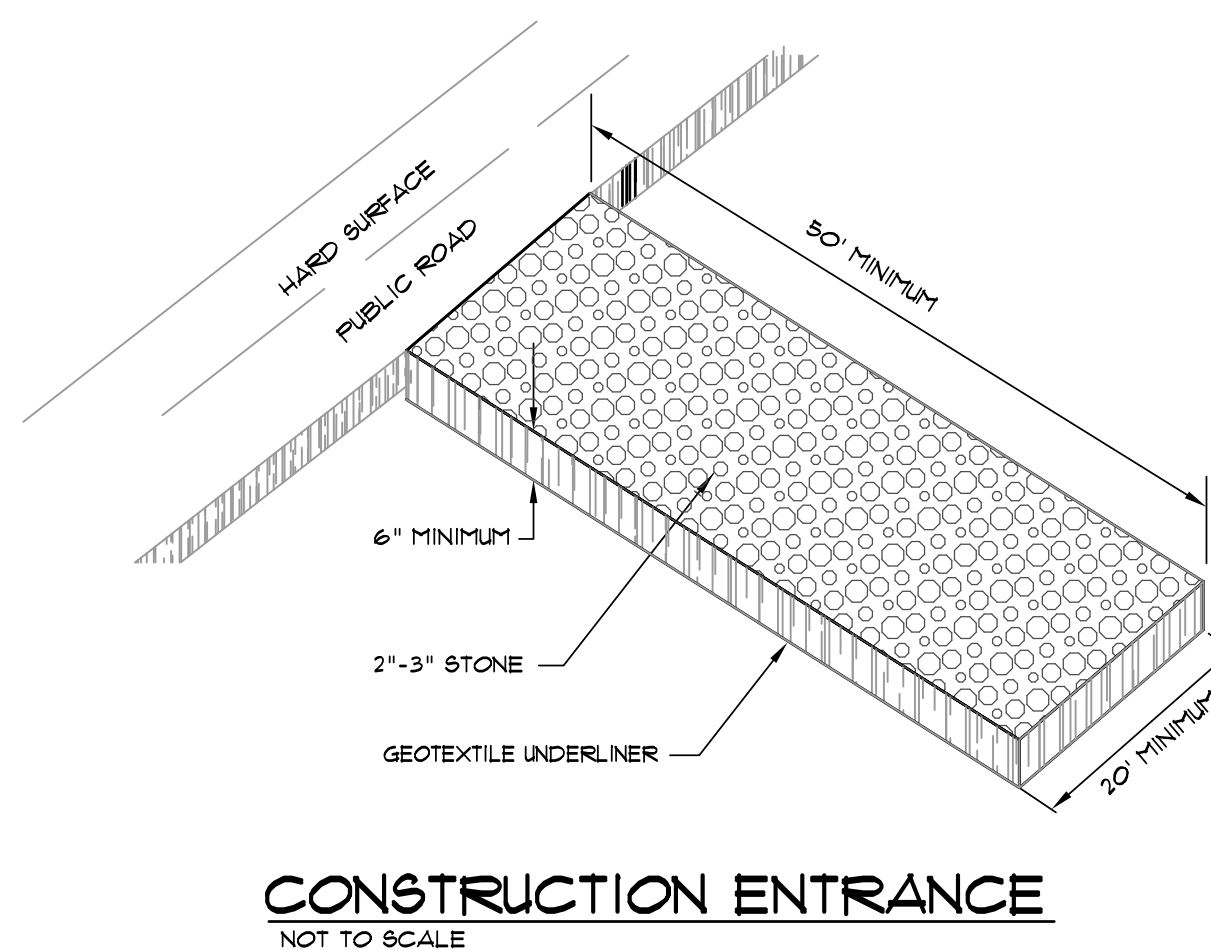
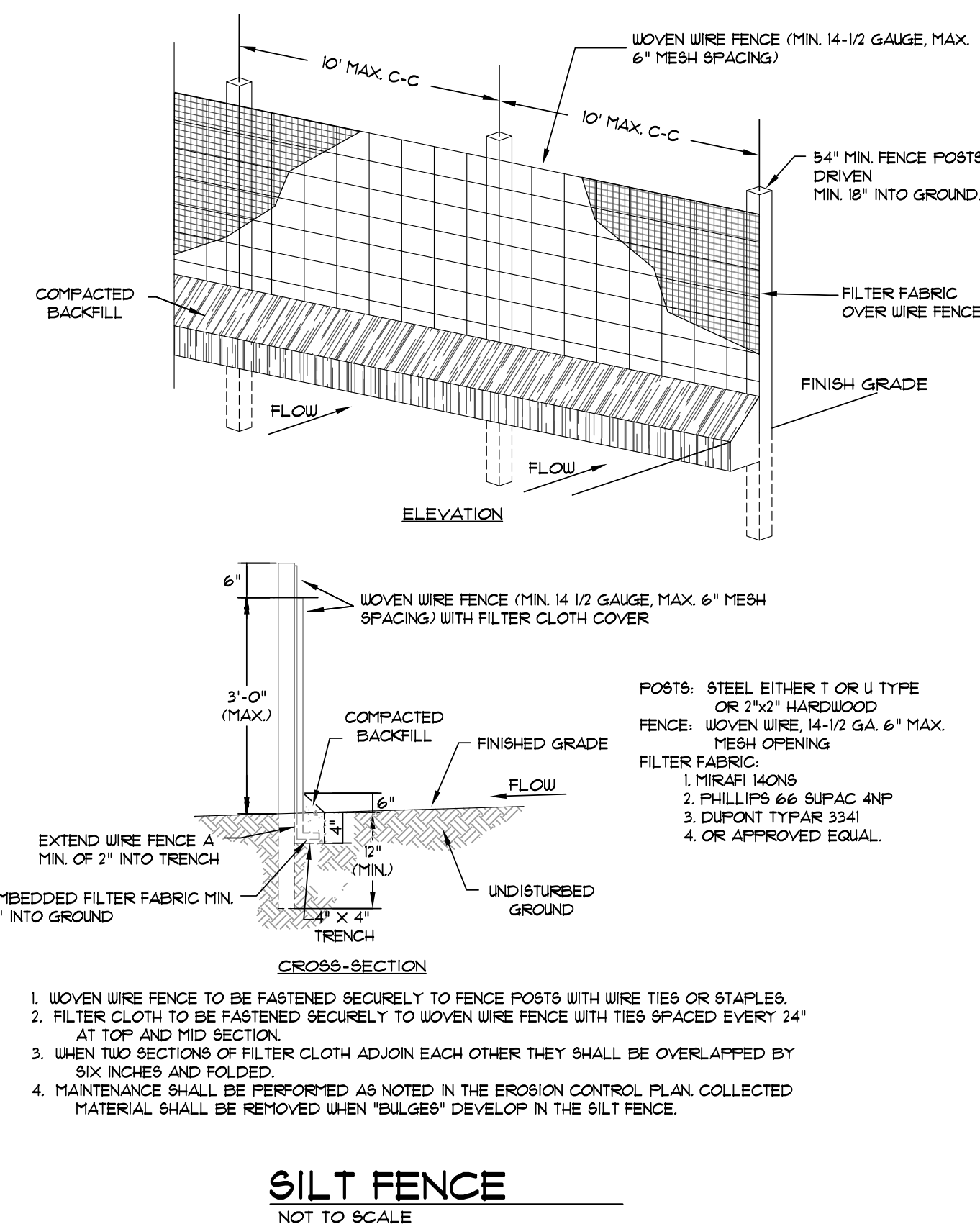
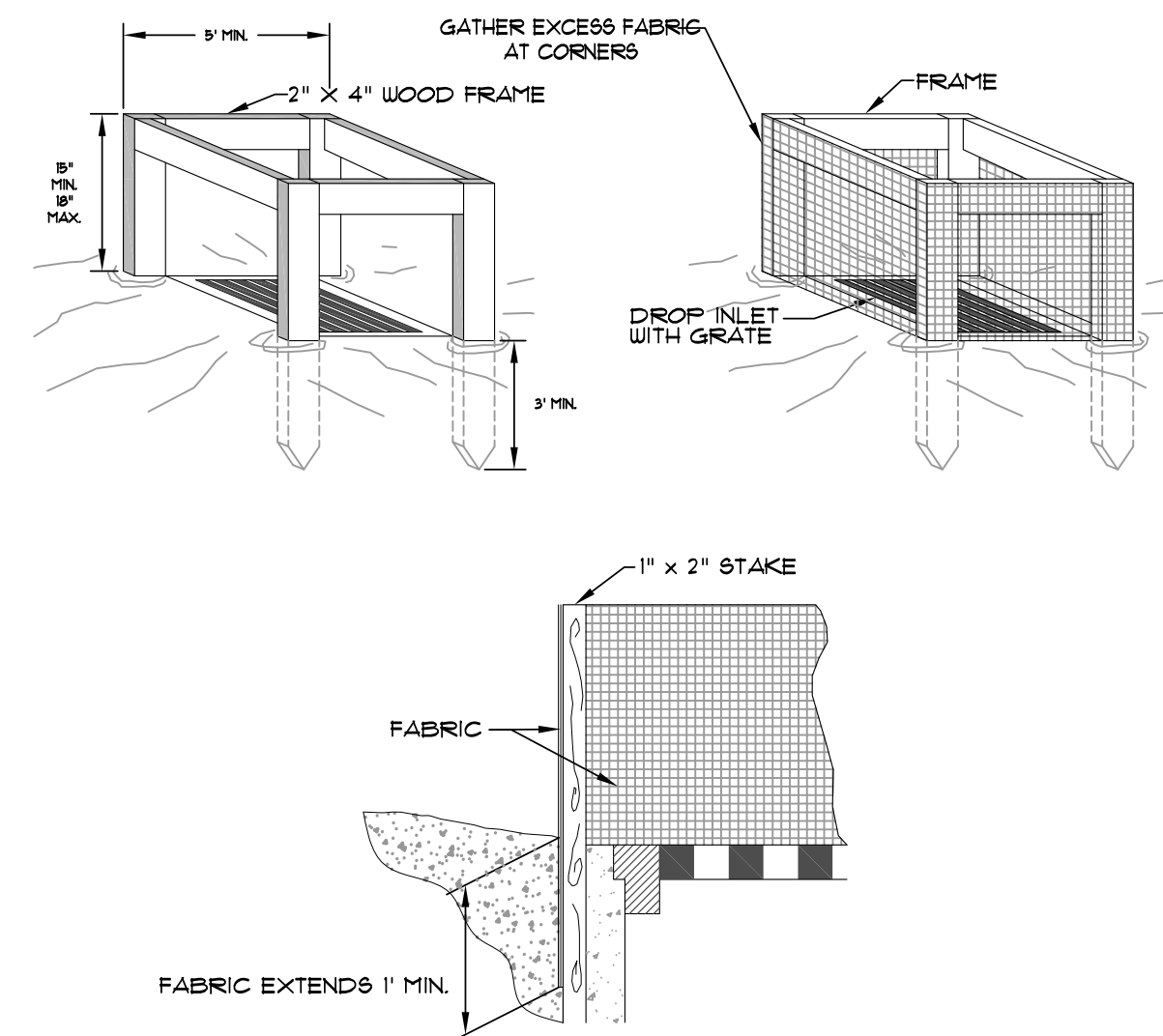
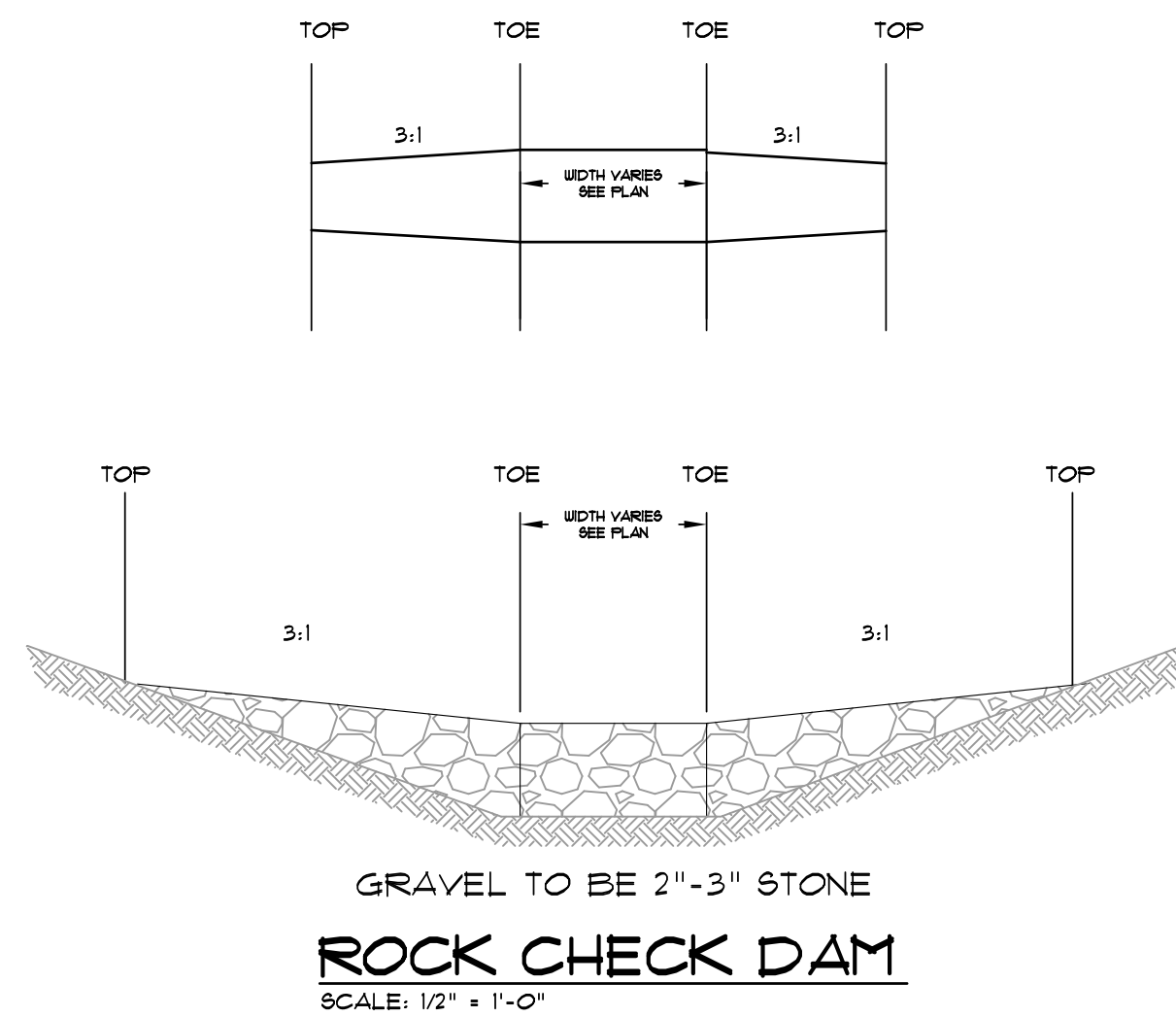
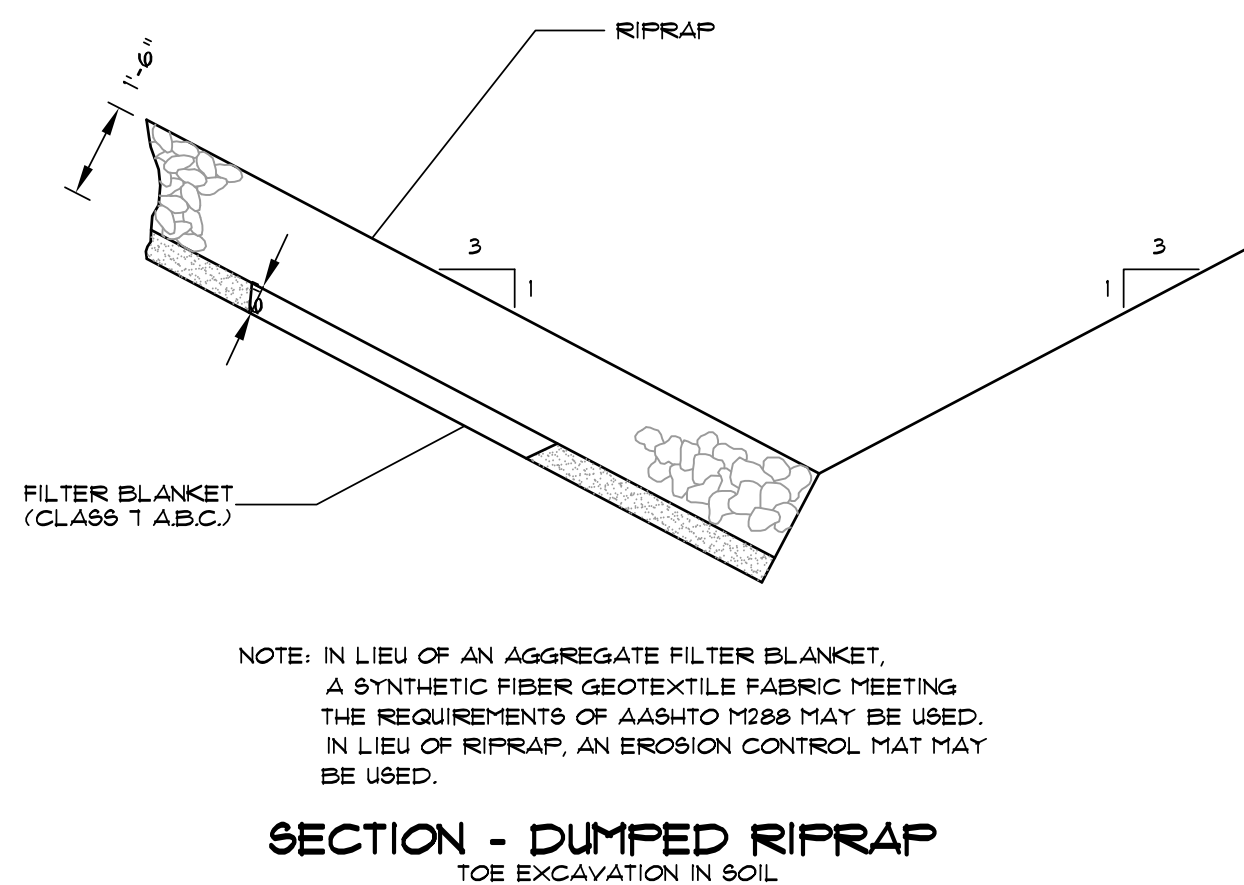
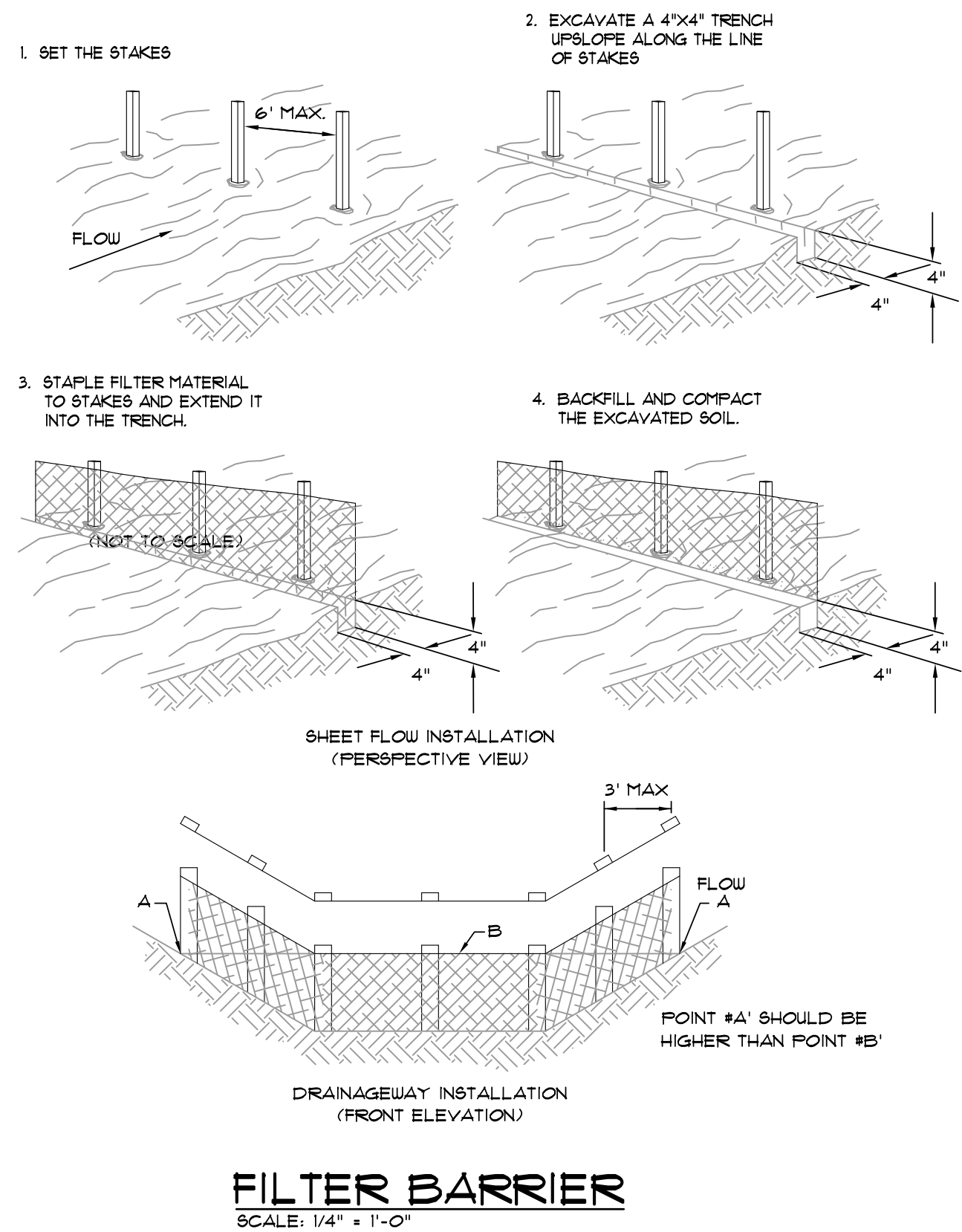
103 SOUTH CHURCH STREET • P.O. BOX 1462
JONESBORO, AR 72403
PH: 870-932-3594 • FAX: 870-935-1263



NO.	DESCRIPTION	DATE

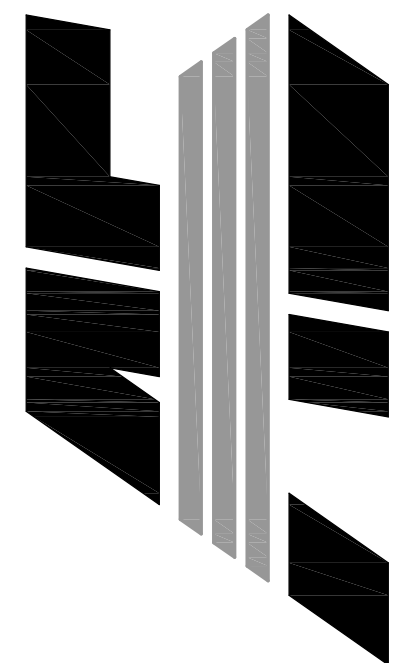
STANDARD
DETAILS

DATE: 09/13/2017	DRAWN: CCH
CADD FILE: 17107.SDP	CHECKED: JME
DWG#: 0414091.000X	SHEET
SCALE: AS SHOWN	C008



LOT 14
THE LANDING
AT GREENSBOROUGH VILLAGE
JONESBORO, ARKANSAS

**ASSOCIATED
ENGINEERING, LLC**
CIVIL ENGINEERING • LAND SURVEYING
LAND PLANNING
103 SOUTH CHURCH STREET • P.O. BOX 1462
JONESBORO, AR 72403
PH: 870-932-3594 • FAX: 870-935-1263



NO.	DESCRIPTION	DATE

EROSION CONTROL DETAILS

DATE: 09/13/2017	DRAWN: COH
CADD FILE: 17107-SDP	CHECKED: JME
DWG# 0414091.000X	SHEET
SCALE: AS SHOWN	C009