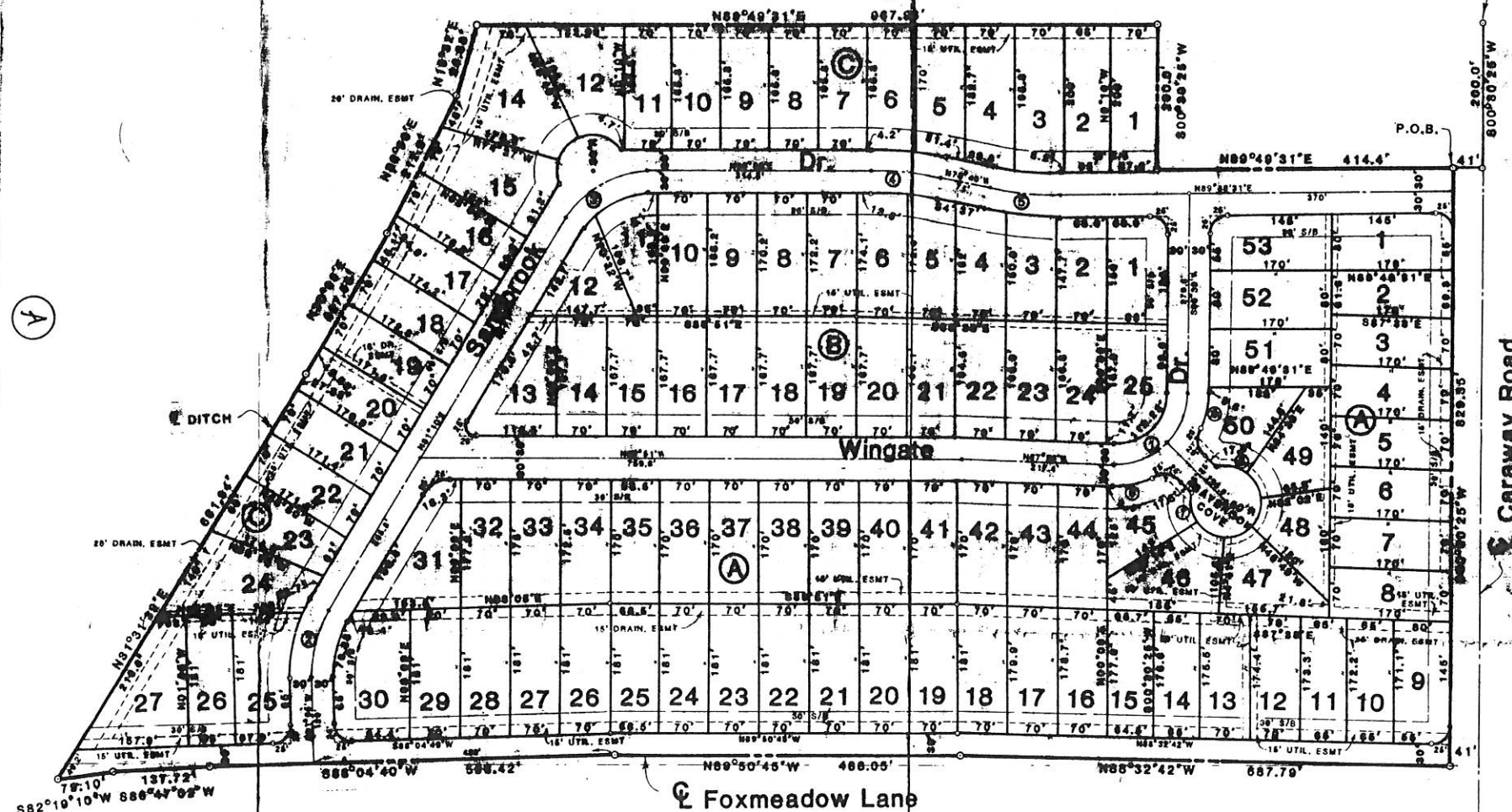


LOT	BLK	SF	AC.
1	A	13,950	0.31
2	A	11,143	0.26
3	A	11,900	0.27
4	A	11,900	0.27
5	A	11,900	0.27
6	A	11,900	0.27
7	A	11,900	0.27
8	A	11,900	0.27
9	A	11,900	0.27
10	A	11,154	0.26
11	A	11,232	0.26
12	A	12,173	0.28
13	A	12,243	0.28
14	A	11,447	0.26
15	A	11,529	0.26
16	A	12,474	0.29
17	A	12,551	0.29
18	A	12,635	0.29
19	A	12,670	0.29
20	A	12,670	0.29
21	A	12,670	0.29
22	A	12,670	0.29
23	A	12,670	0.29
24	A	12,670	0.29
25	A	12,398	0.28
26	A	12,670	0.29
27	A	12,670	0.29
28	A	12,670	0.29
29	A	12,670	0.29
30	A	18,000	0.41
31	A	17,400	0.40
32	A	12,341	0.28
33	A	12,160	0.28
34	A	11,984	0.28
35	A	11,645	0.27
36	A	11,900	0.27
37	A	11,900	0.27
38	A	11,900	0.27
39	A	11,900	0.27
40	A	11,900	0.27
41	A	11,900	0.27
42	A	11,900	0.27
43	A	11,900	0.27
44	A	11,900	0.27
45	A	11,700	0.27
46	A	14,600	0.34
47	A	12,200	0.28
48	A	10,200	0.23
49	A	11,000	0.25
50	A	12,000	0.28
51	A	13,608	0.31
52	A	13,608	0.31
53	A	13,530	0.31

1	B	12,700	0.29
2	B	10,433	0.24
3	B	10,444	0.24
4	B	10,800	0.25
5	B	11,690	0.27
6	B	12,133	0.28
7	B	12,117	0.28
8	B	11,784	0.27
9	B	11,844	0.27
10	B	11,704	0.27
11	B	10,100	0.23
12	B	12,500	0.29
13	B	15,550	0.36
14	B	11,739	0.27
15	B	11,739	0.27
16	B	11,739	0.27
17	B	11,739	0.27
18	B	11,739	0.27
19	B	11,739	0.27
20	B	11,683	0.27
21	B	11,571	0.27
22	B	11,550	0.27
23	B	11,634	0.27
24	B	11,711	0.27
25	B	12,900	0.30

1	C	13,760	0.32
2	C	13,000	0.30
3	C	13,850	0.32
4	C	13,240	0.30
5	C	12,340	0.28
6	C	11,750	0.27
7	C	11,600	0.27
8	C	11,600	0.27
9	C	11,600	0.27
10	C	11,600	0.27
11	C	11,600	0.27
12	C	16,200	0.37
13	C	21,406	0.49
14	C	16,800	0.39
15	C	12,550	0.29
16	C	12,285	0.28
17	C	12,145	0.28
18	C	12,050	0.28
19	C	11,980	0.28
20	C	11,970	0.27
21	C	12,000	0.28
22	C	12,885	0.30
23	C	16,300	0.37
24	C	14,800	0.34
25	C	11,765	0.27
26	C	11,765	0.27
27	C	17,500	0.40

LOT	BLK	SF	AC.
1	A	13,950	0.31
2	A	11,143	0.26
3	A	11,900	0.27
4	A	11,900	0.27
5	A	11,900	0.27
6	A	11,900	0.27
7	A	11,900	0.27
8	A	11,900	0.27
9	A	11,154	0.26
10	A	11,232	0.26
11	A	12,173	0.28
12	A	12,243	0.28
13	A	11,447	0.26
14	A	11,529	0.26
15	A	12,474	0.29
16	A	12,551	0.29
17	A	12,635	0.29
18	A	12,670	0.29
19	A	12,670	0.29
20	A	12,670	0.29
21	A	12,670	0.29
22	A	12,670	0.29
23	A	12,670	0.29
24	A	12,670	0.29
25	A	12,398	0.28
26	A	12,670	0.29
27	A	12,670	0.29
28	A	12,670	0.29
29	A	12,670	0.29
30	A	18,000	0.41
31	A	17,400	0.40
32	A	12,341	0.28
33	A	12,160	0.28
34	A	11,984	0.28
35	A	11,645	0.27
36	A	11,900	0.27
37	A	11,900	0.27
38	A	11,900	0.27
39	A	11,900	0.27
40	A	11,900	0.27
41	A	11,900	0.27
42	A	11,900	0.27
43	A	11,900	0.27
44	A	11,900	0.27
45	A	11,700	0.27
46	A	14,600	0.34
47	A	12,200	0.28
48	A	10,200	0.23
49	A	11,000	0.25
50	A	12,000	0.28
51	A	13,608	0.31
52	A	13,608	0.31
53	A	13,530	0.31

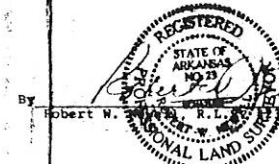


LEGAL DESCRIPTION:

A part of the Northeast Quarter of Section 5, Township 13 North, Range 4 East, being more particularly described as follows: Begin at the Northeast corner of Section 5, Township 13 North, Range 4 East; thence South 00°30'25" West on the Section line 200.0 feet; thence South 89°49'31" West 41.0 feet to the West right-of-way line of Caraway Road, the point of beginning proper; thence South 00°30'25" West along the West line of Caraway Road 829.35 feet to the centerline of Foxmeadow Lane; thence with the meanderings with the centerline of Foxmeadow Lane as follows: North 88°32'42" West 687.79 feet; North 89°50'45" West 488.95 feet; South 88°04'40" West 566.42 feet; South 86°47'02" West 137.72 feet; South 82°19'10" West 79.10 feet to the intersection with a ditch centerline; thence with the meanderings with said ditch centerline as follows: North 31°31'39" East 661.94 feet; North 30°06' East 227.65 feet; North 26°58' East 212.9 feet; North 16°32' East 96.68 feet to the section line; thence North 89°49'31" East on the section line 467.96 feet; thence South 00°30'25" West 200.0 feet; thence North 69°49'31" East 414.4 feet to the point of beginning proper, containing 34.57 acres, more or less and being subject to all rights of way and easements of record, all as shown on the plat of Survey hereon.

CERTIFICATE OF SURVEY:

To all parties interested in Title to premises Surveyed: This is to certify that this survey was actually made on the ground as per record description and is correct, to the best of my ability and knowledge, that there are no encroachments either way across property lines (except as shown). The East property line was changed to show 41 foot right-of-way West of center of Caraway Road.



OWNER'S CERTIFICATE:

We hereby certify that we are the owners of the property shown and described hereon, that we adopt the plan of subdivision and dedicate perpetual use of all streets and easements as noted.

BARRETT PLACE

Jonesboro, Arkansas

REVISED

METROPOLITAN AREA PLANNING COMMISSION
Jonesboro - Craighead County

☐ PRELIMINARY APPROVAL
☒ FINAL APPROVAL
☐ AS NOTED
☐ DISAPPROVED
☐ TABLED

John R. Collins Chairman
Pat Fleetwood Secretary
OCT 26 1993 Date

RECORDED
BOOK **B** PAGE **103**
DATE **10-23-93** TIME **3:40 PM**
CRAGHEAD COUNTY
PAT FLEETWOOD, CLERK
Pat Fleetwood

FILED
DEC 13 1993
PAT FLEETWOOD
CLERK & CHANCERY CLERK

SCALE 1"=100 FT.

NOTE: THERE IS NOT A LOT 13, BLK C

REVISED: 10-21-83
REVISED: 8-28-82
REVISED: 8-12-82

JONESBORO-MILLER-NEWELL
DESIGNERS-SURVEYORS-ENGINEERS, INC.
JONESBORO, ARKANSAS

PT. NE 1/4 SEC. 5, T.13N, R.4E

DATE: 7/21/92
SCALE: 1"=100 FT.
DRAWN BY: [Signature]

