



FIRST NATIONAL BANK HILLTOP BRANCH & OFFICE BUILDING

3500 East Johnson Avenue, Jonesboro, Ar

W D & D J O B #16-028

UNDER SLAB & FOUNDATION PACKAGE

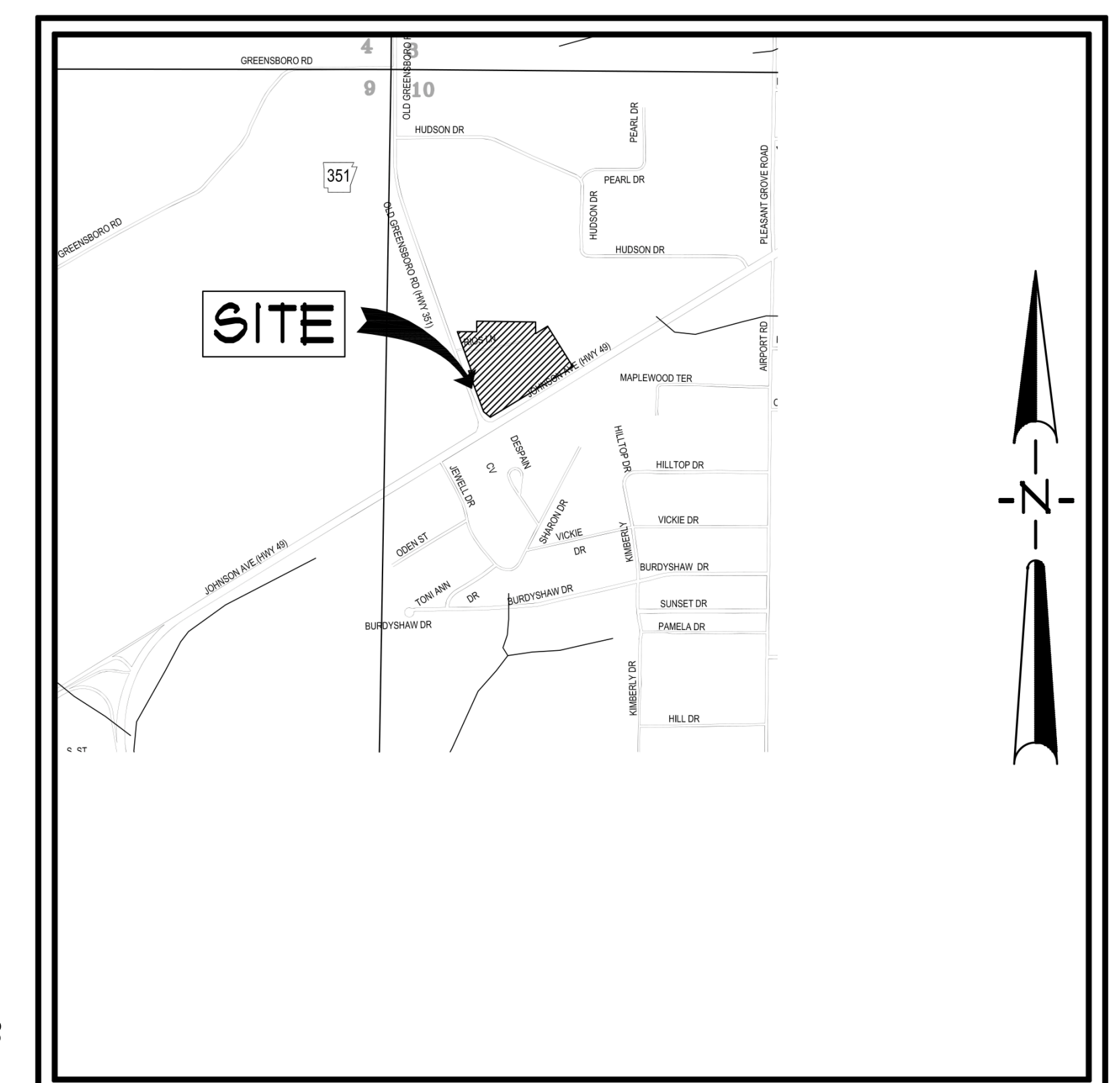
09/19/16

WITTENBERG, DELONY, & DAVIDSON, INC.
ARCHITECTS - INTERIOR DESIGN -
PLANNERS
400 WEST CAPITOL, SUITE 1800
LITTLE ROCK, ARKANSAS 72201-4857
PH. # 501-376-6681
FAX # 501-376-0231

ENGINEERING CONSULTANTS, INC.
STRUCTURAL ENGINEERS
401 WEST CAPITOL AVE., SUITE 305
LITTLE ROCK, ARKANSAS 72201
PH. # 501-376-3752
FAX # 501-376-7314

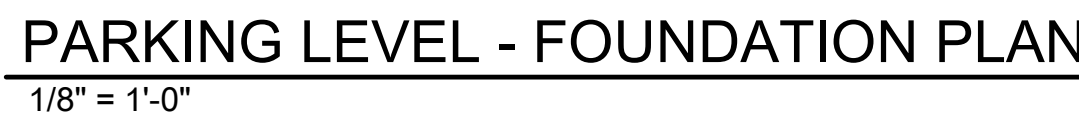
BATSON INC. | ENGINEERING SOLUTIONS
MEP ENGINEERS
1300 BROOKWOOD DRIVE
LITTLE ROCK, ARKANSAS 72202
PH. # 501-664-3311
FAX # 501-664-3344

Associated Engineering, LLC
CIVIL ENGINEERS
103 South Church St.
P.O. Box 1462
Jonesboro, ARKANSAS 72403
PH. # 870-932-3594
FAX # 870-935-1263



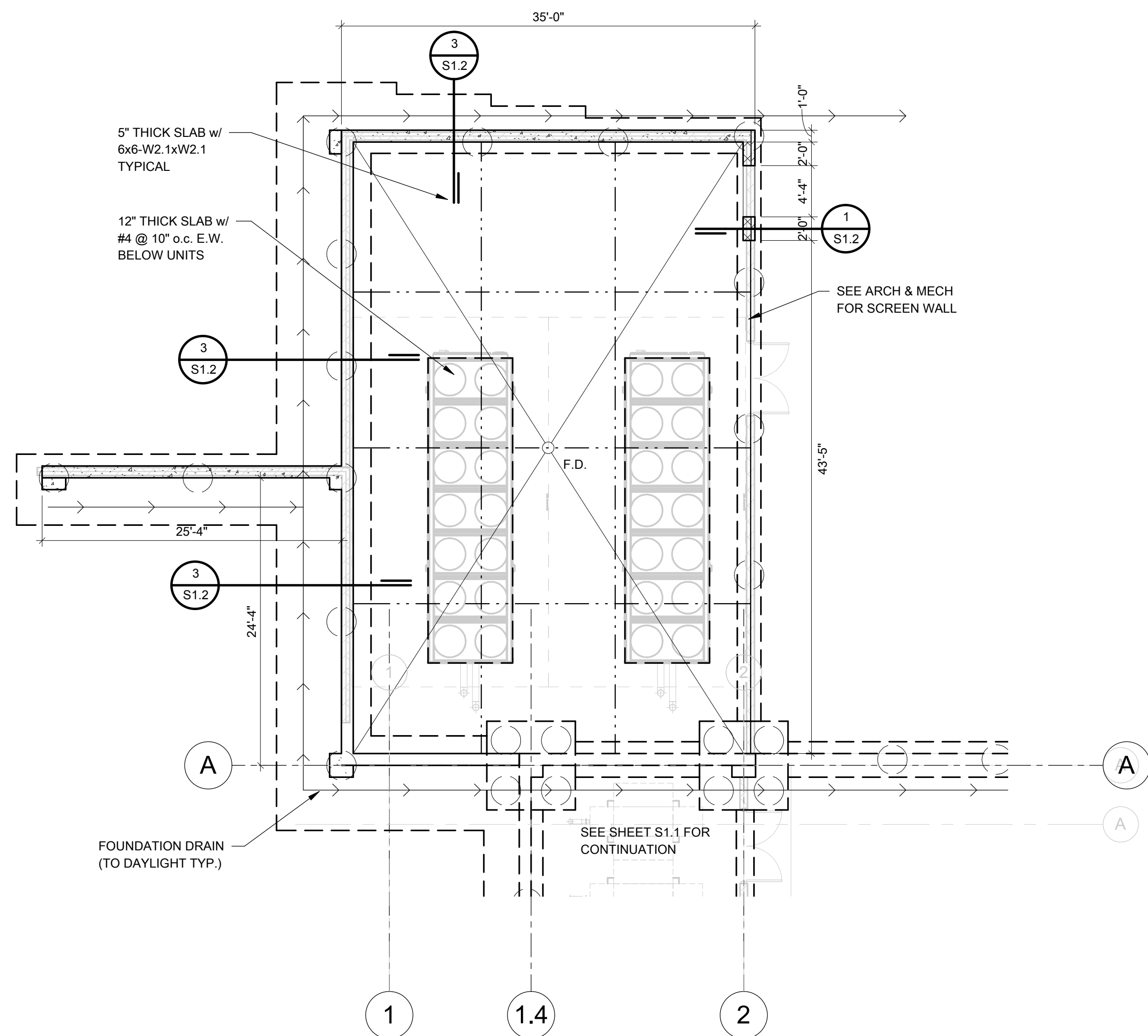
VICINITY MAP

BID PACKAGE 1 (PREVIOUSLY ISSUED)	
INDEX - SHEET INDEX - CIVIL	
SHEET NUMBER	SHEET NAME
C002	GENERAL NOTES
C003	BOUNDARY & TOPOGRAPHIC SURVEY
C004	SITE PLAN
C005	DEMOLITION PLANS
C006	UTILITY PLAN
C007	GRADING PLAN
C008	EROSION CONTROL PLAN
C009	LANDSCAPE PLAN
C010	STANDARD DETAILS
C011	STANDARD DETAILS
C012	EROSION CONTROL DETAILS
BID PACKAGE 2	
INDEX - SHEET INDEX - STRUCTURAL	
SHEET NUMBER	SHEET NAME
S0.0	NOTES AND LEGENDS
S1.1	FOUNDATION PLAN
S1.2	MECH ENCLOSURE FOUNDATION PLAN AND RETAINING WALL DETAILS
S2.1	FOUNDATION DETAILS
S2.2	FOUNDATION DETAILS
INDEX - SHEET INDEX - PLUMBING	
SHEET NUMBER	SHEET NAME
P0.01	UNDERGROUND PLUMBING PACKAGE
INDEX - SHEET INDEX - ELECTRICAL	
SHEET NUMBER	SHEET NAME
E0.01	UNDERGROUND ELECTRICAL PACKAGE

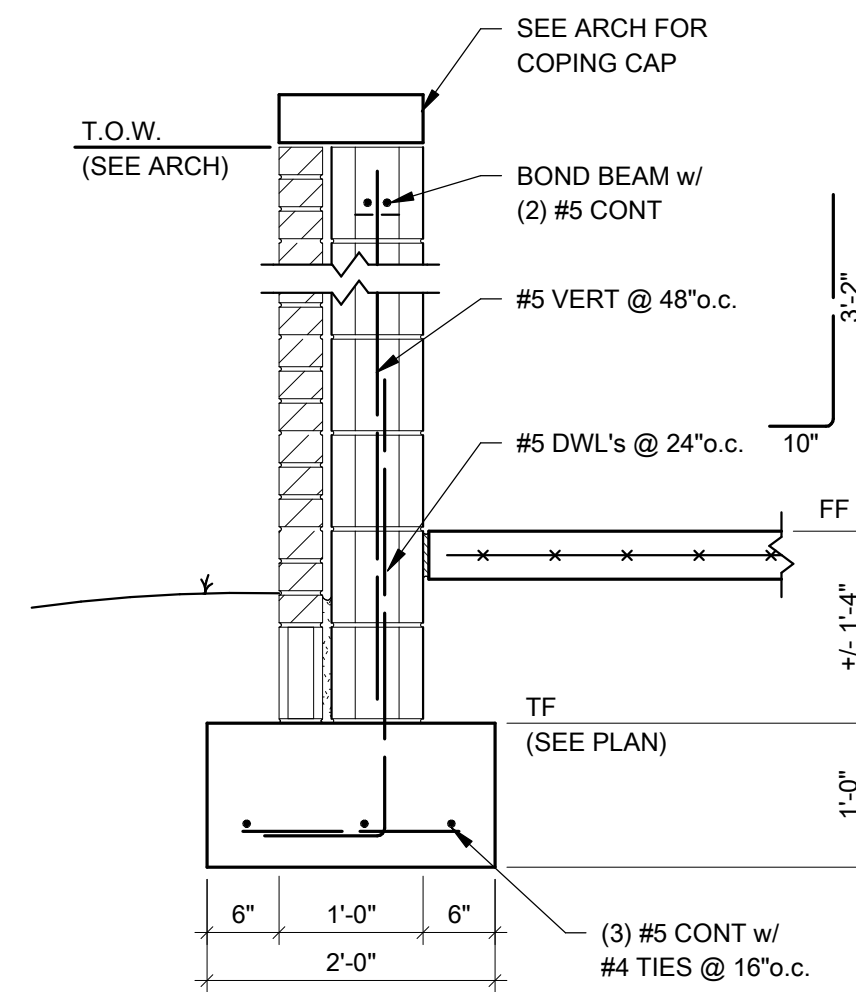


STATE OF
ARKANSAS
☆☆☆
REGISTERED
PROFESSIONAL
ENGINEER
☆☆☆
No. 8953

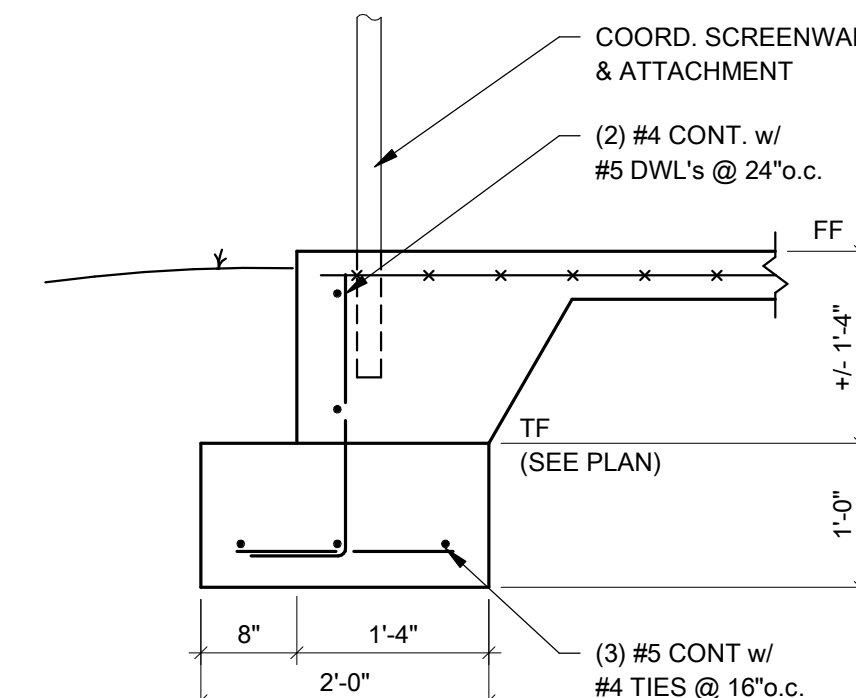
C:\Users\delony\OneDrive\Documents\171616-028\171616-028.dwg
9/19/2016 11:03:00 AM



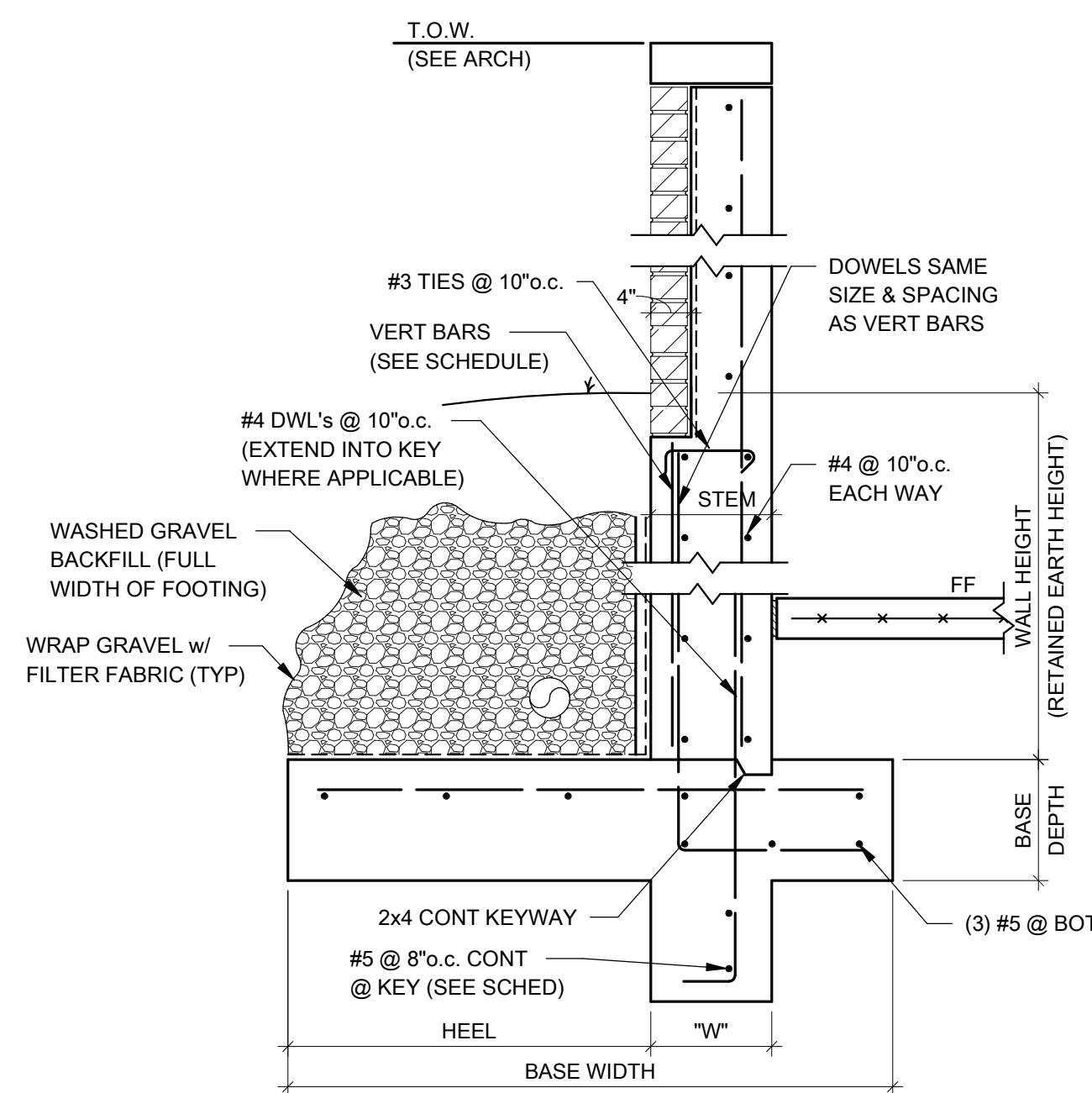
A MECH ENCLOSURE FOUNDATION PLAN
1/8" = 1'-0"



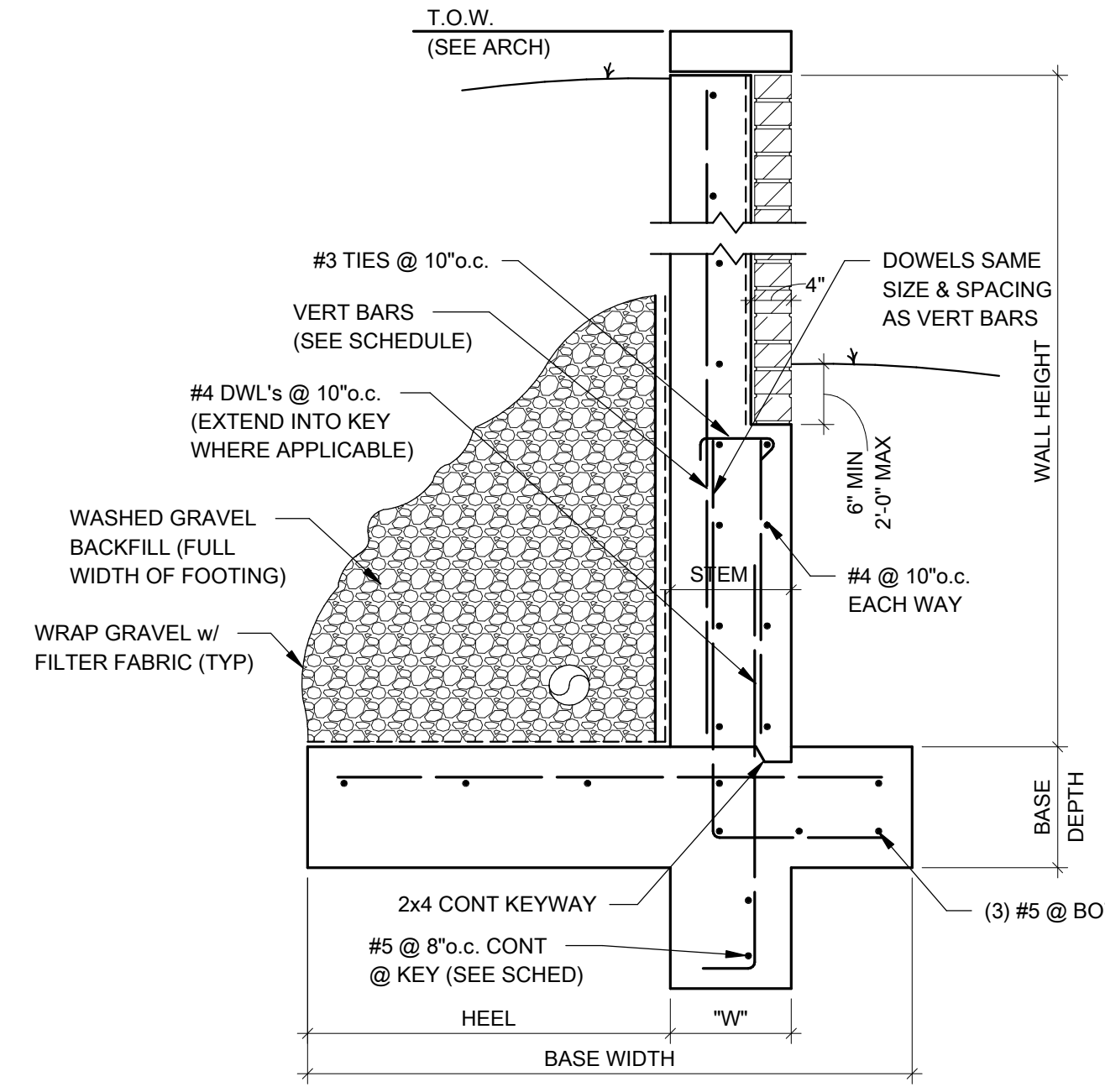
1 SECTION
3/4" = 1'-0"



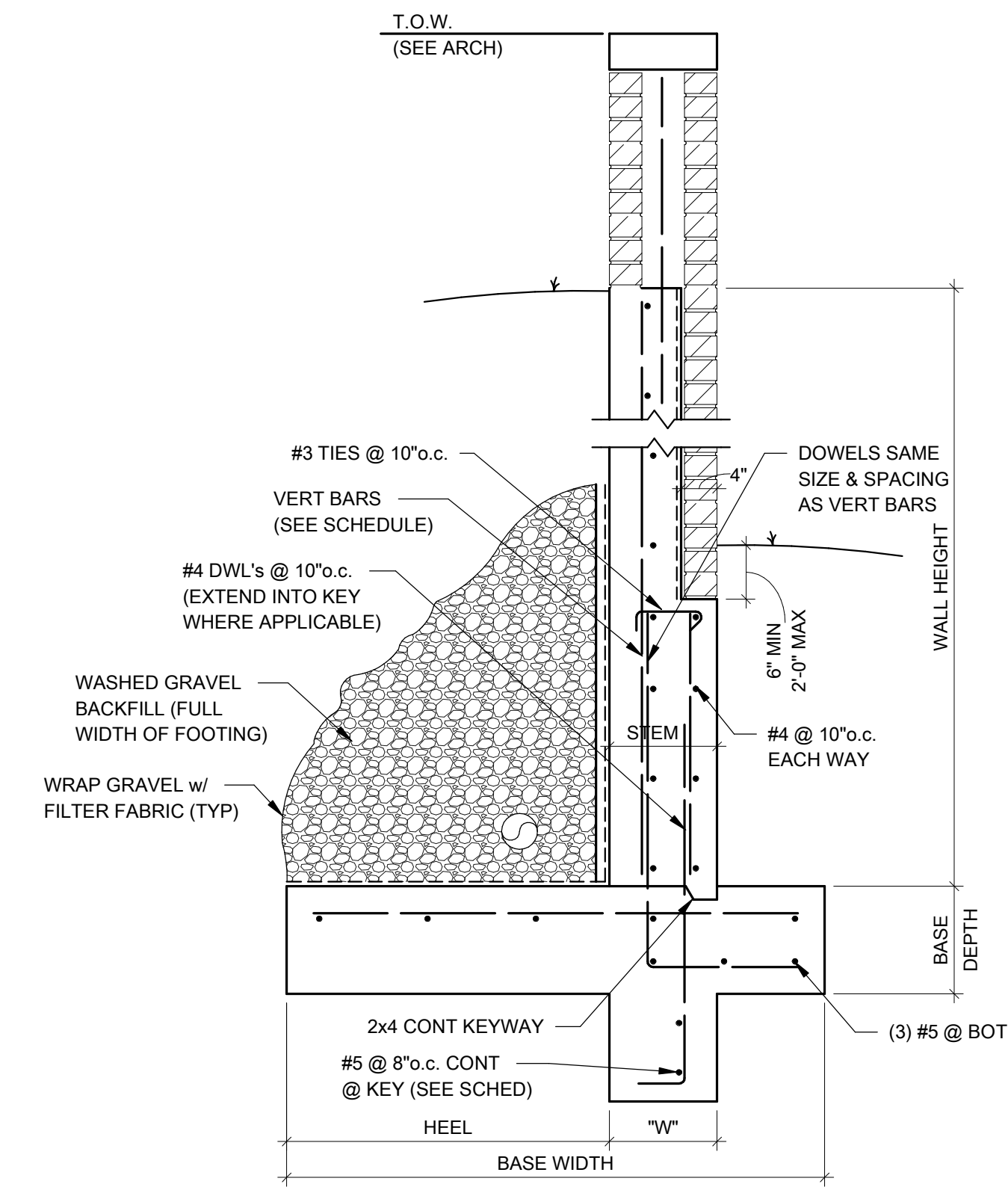
2 SECTION
3/4" = 1'-0"



3 SECTION
3/4" = 1'-0"



4 SECTION
3/4" = 1'-0"



5 SECTION
3/4" = 1'-0"

USE RETAINING WALL SCHEDULE
BELOW FOR SECTIONS 3, 4 & 5

RETAINING WALL SCHEDULE							
WALL HEIGHT	BASE		HEEL	STEM	VERT BARS	INSIDE BAR LAP	
	WIDTH	DEPTH				W	L
0' TO 4'-0"	4'-0"	1'-0"	2'-0"	1'-0"	#4 @ 10'o.c.	2'-4"	N/A
4'-1" TO 6'-0"	5'-0"	1'-0"	3'-0"	1'-0"	#4 @ 10'o.c.	2'-4"	1'-0"
6'-1" TO 8'-0"	6'-0"	1'-0"	4'-0"	1'-0"	#5 @ 10'o.c.	3'-0"	1'-0"
8'-1" TO 10'-0"	7'-0"	1'-0"	4'-4"	1'-0"	#6 @ 10'o.c.	3'-6"	1'-0"
10'-1" TO 13'-0"	8'-0"	1'-6"	4'-6"	1'-4"	#7 @ 10'o.c.	4'-0"	1'-4"

CERTIFICATE OF AUTHORIZATION
ENGINEERING CONSULTANTS, INC.
No. 25
ARKANSAS ENGINEER

Engineering Consultants, Inc.
Structural Engineers
401 West Capitol Avenue, Suite 305
Little Rock, Arkansas 72201-3401
Phone No: (501) 376-3752
Fax No: (501) 376-7314
JOB# 16-175

STATE OF ARKANSAS
REGISTERED PROFESSIONAL ENGINEER
No. 8903
9/19/2016

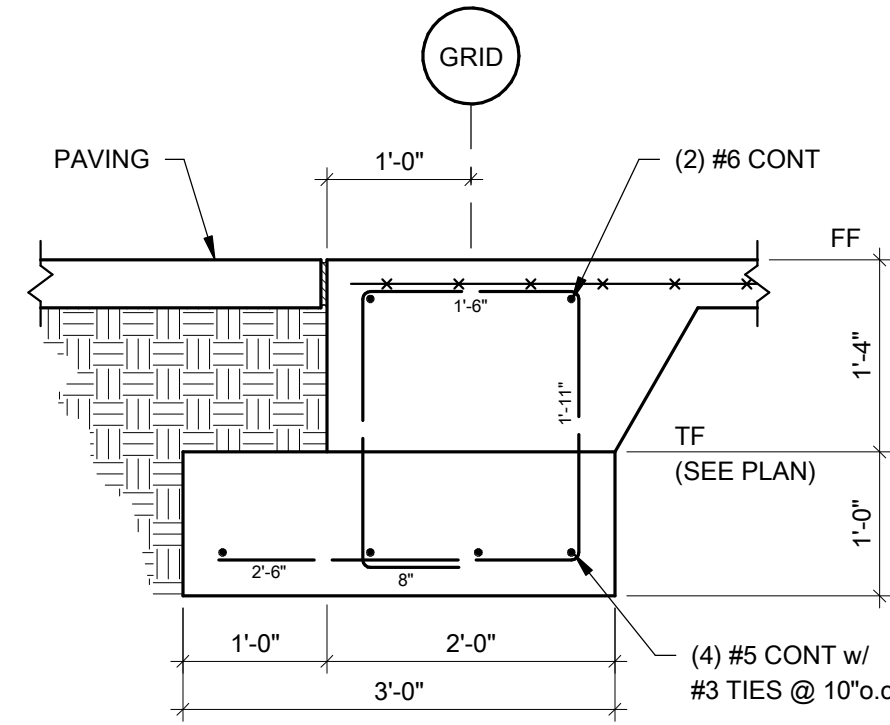
WITTENBERG, DELONY & DAVIDSON ARCHITECTS

PROJECT TITLE
FIRST NATIONAL BANK
HILLTOP BRANCH & OFFICE BUILDING
3500 East Johnson Avenue, Jonesboro, Ar

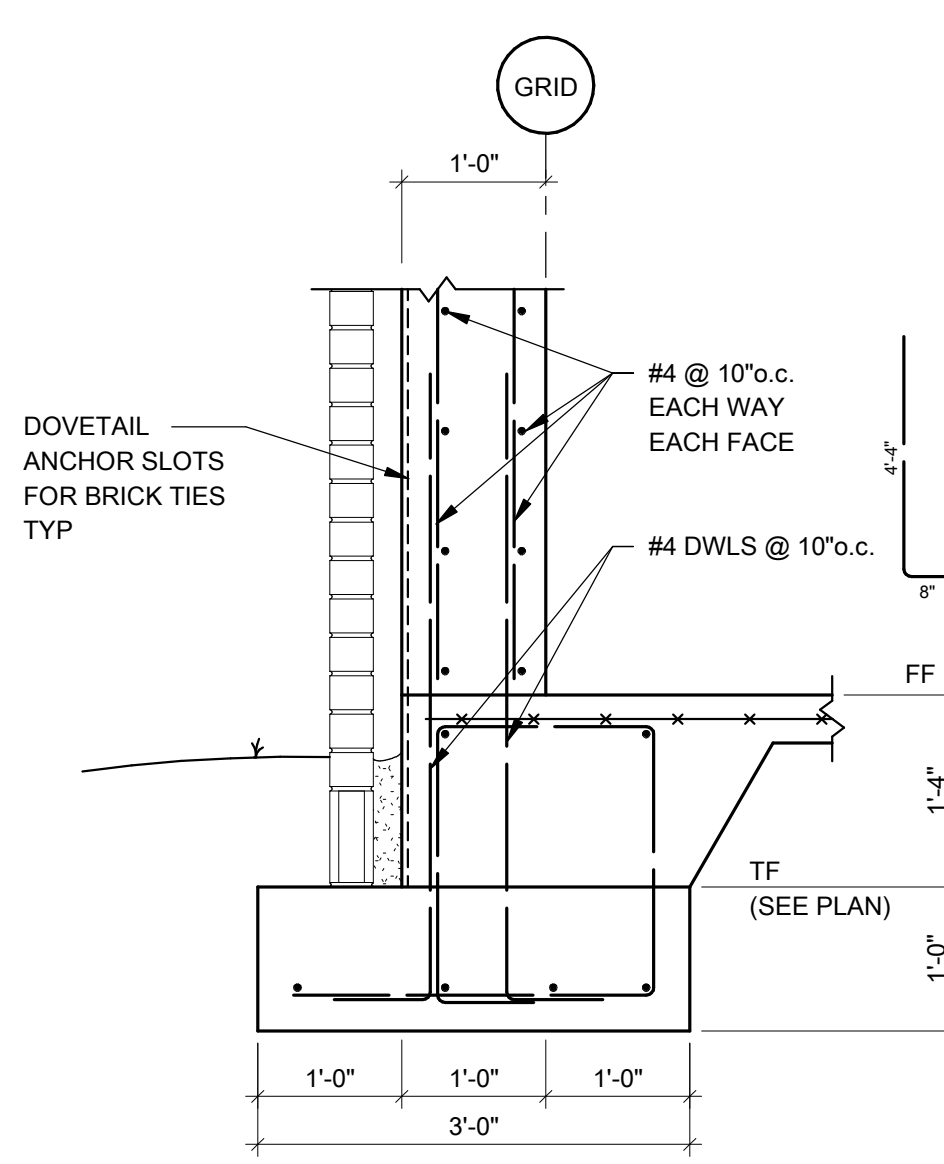
CONTENTS
MECH ENCLOSURE FOUNDATION PLAN
AND RETAINING WALL DETAILS

REVISIONS
REV. NO. DATE DESCRIPTION
09/19/16 16-028
JOB NO

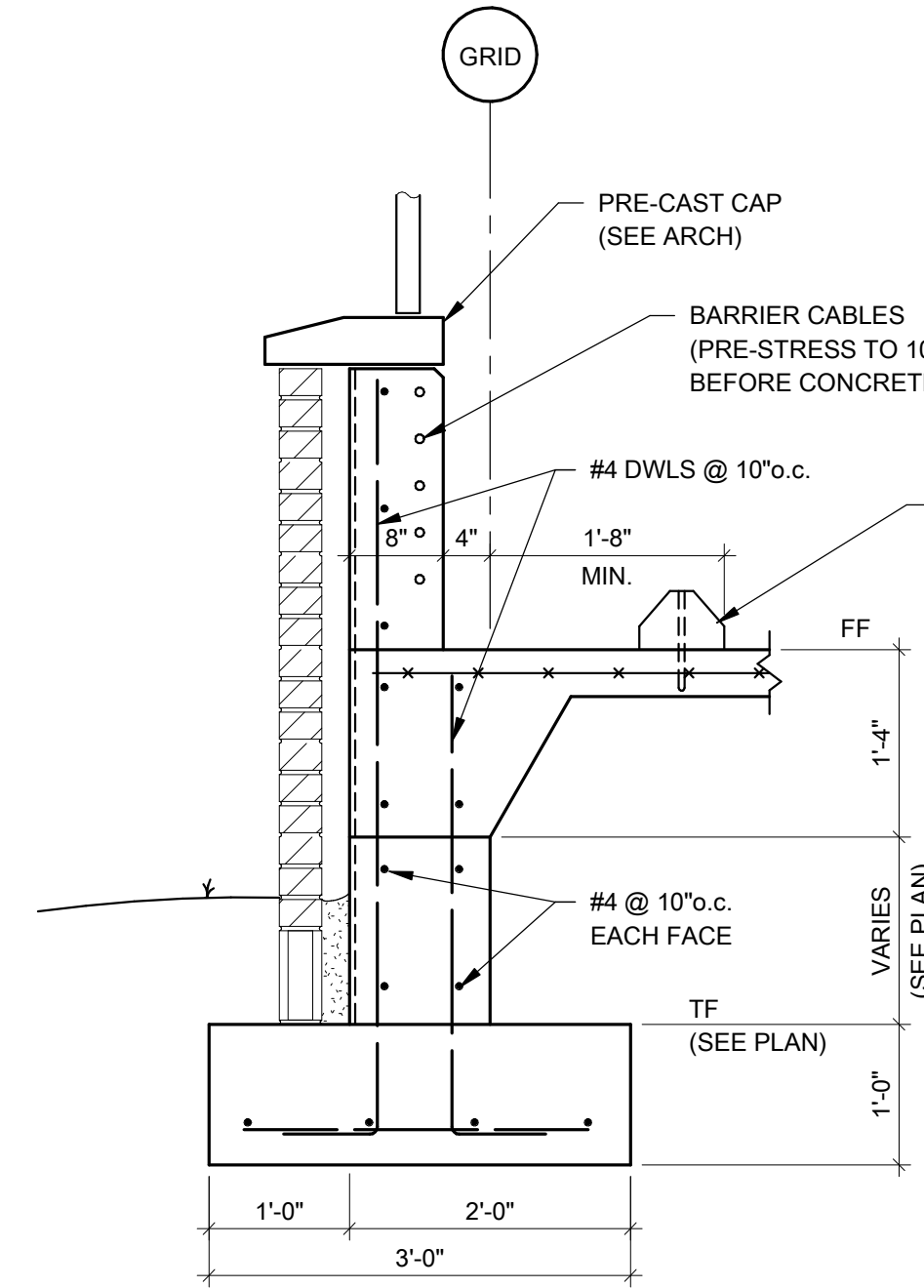
SHEET
S1.2



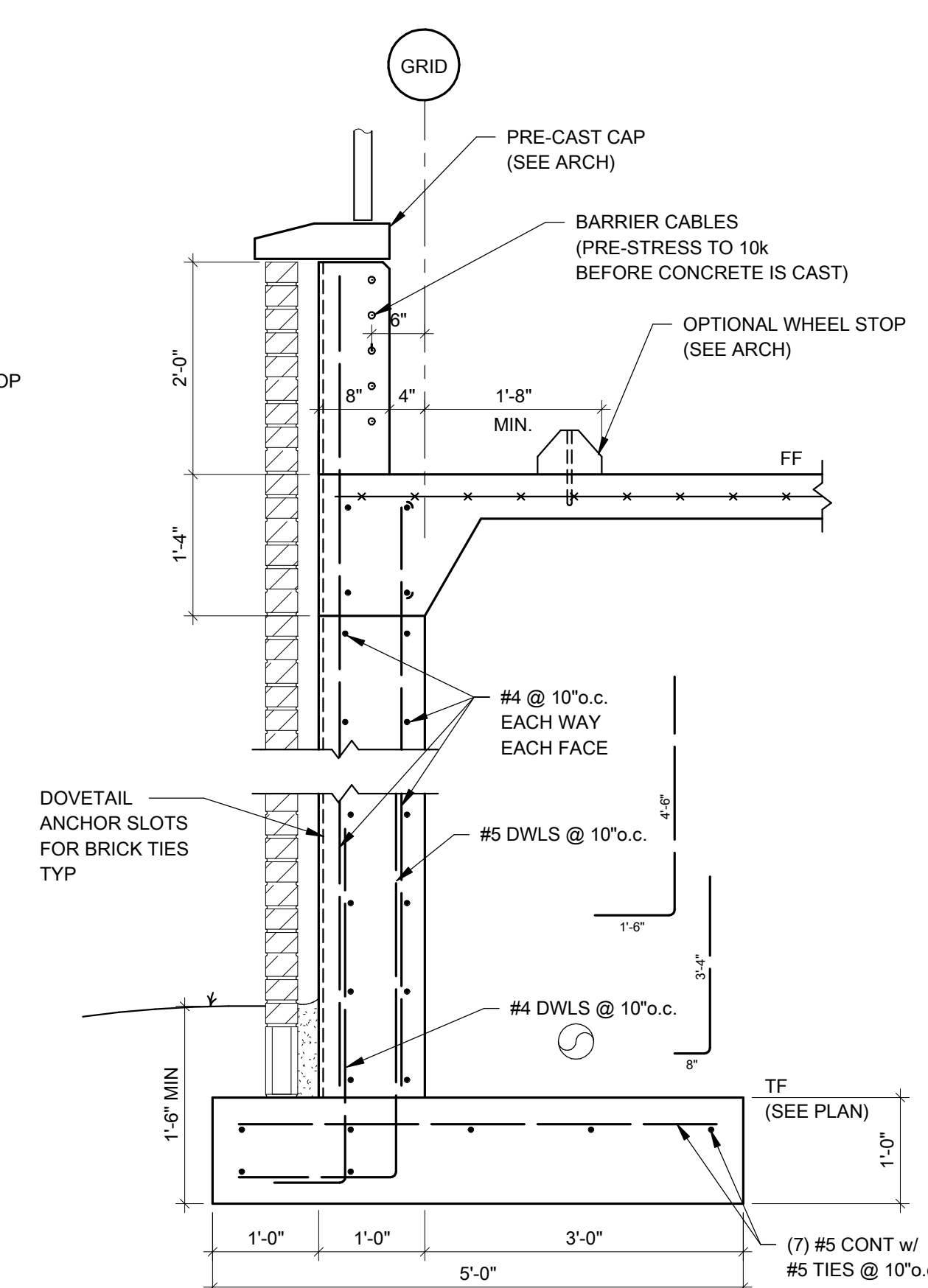
1 SECTION
3/4" = 1'-0"



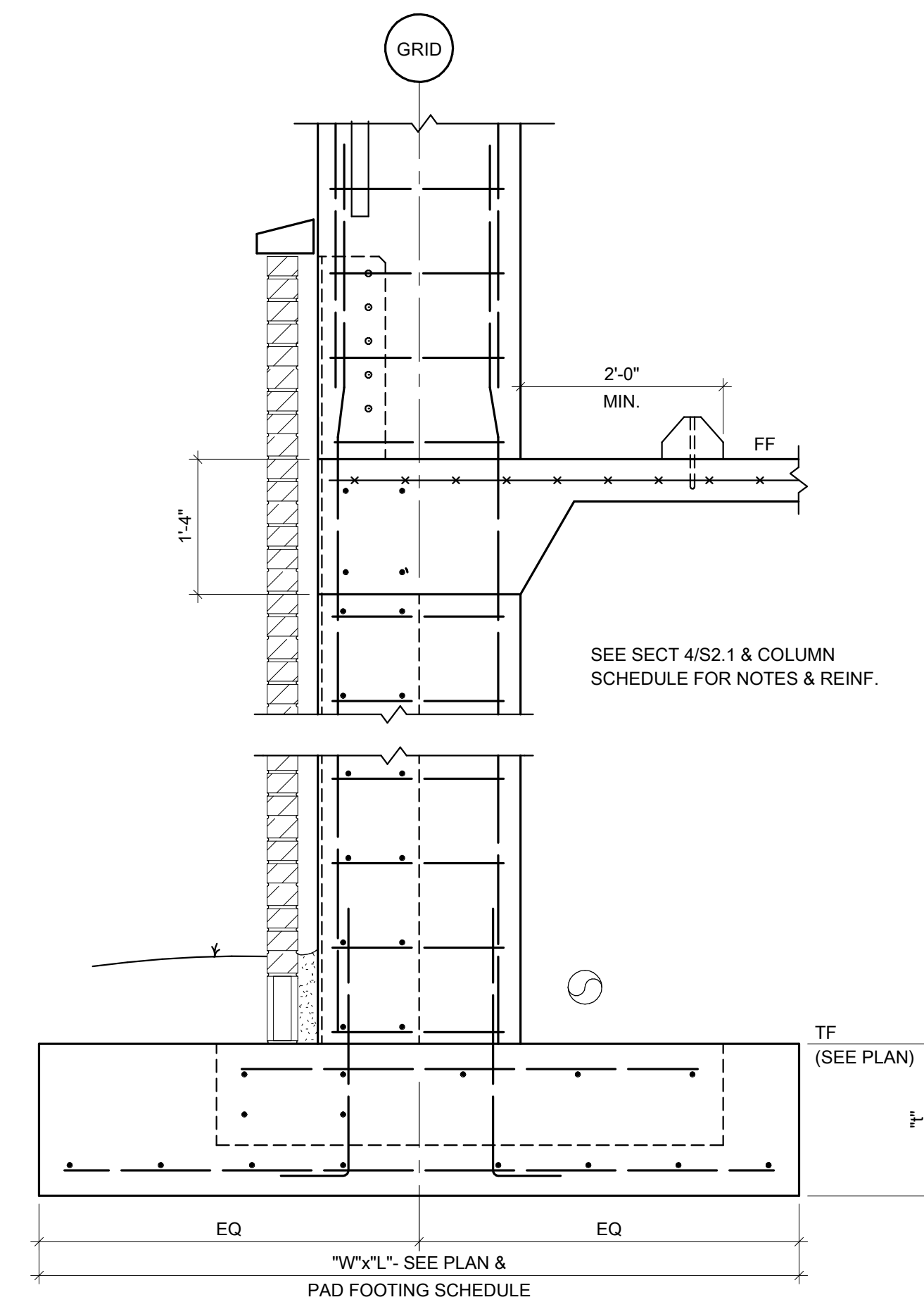
2 SECTION
3/4" = 1'-0"



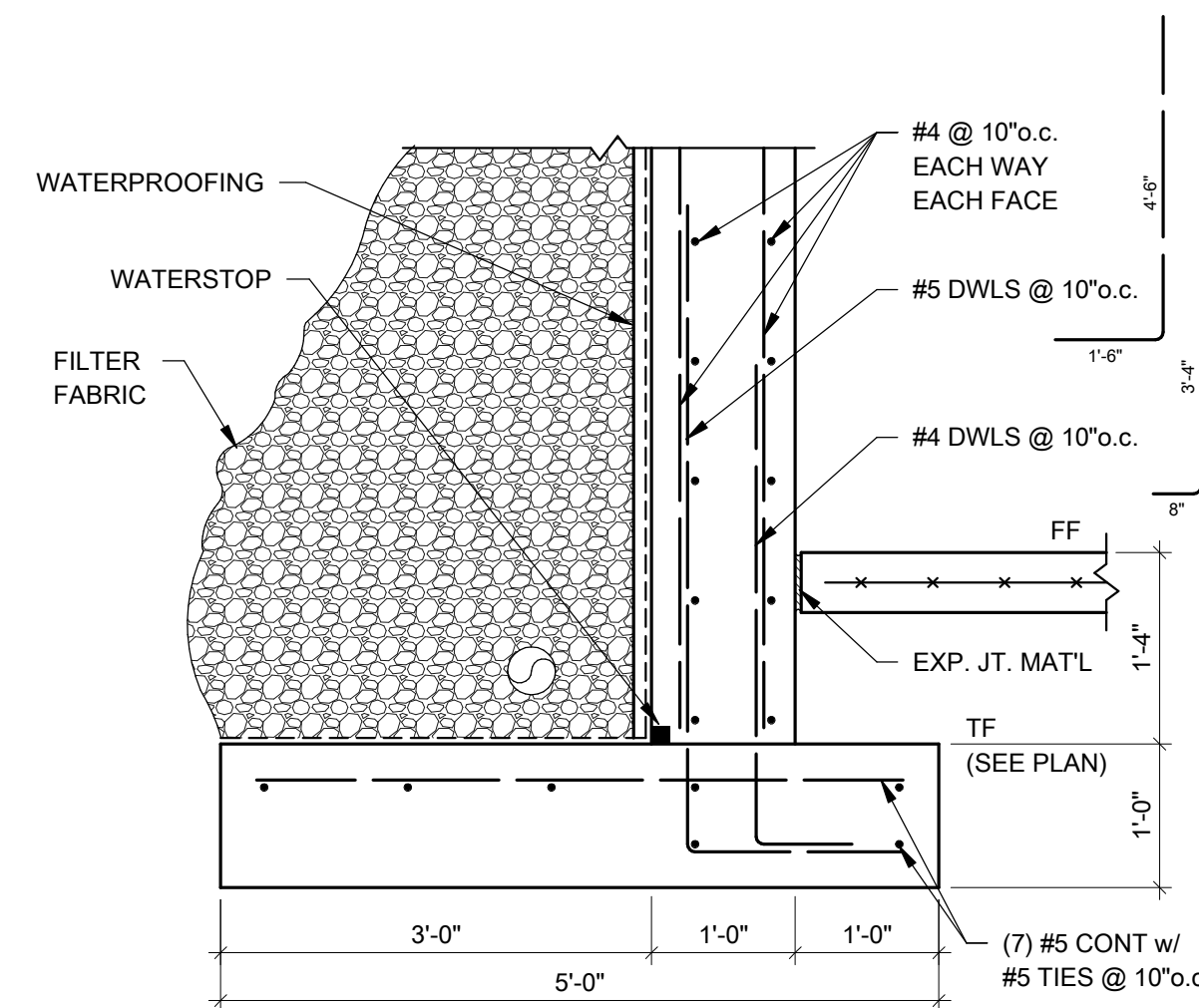
3 SECTION
3/4" = 1'-0"



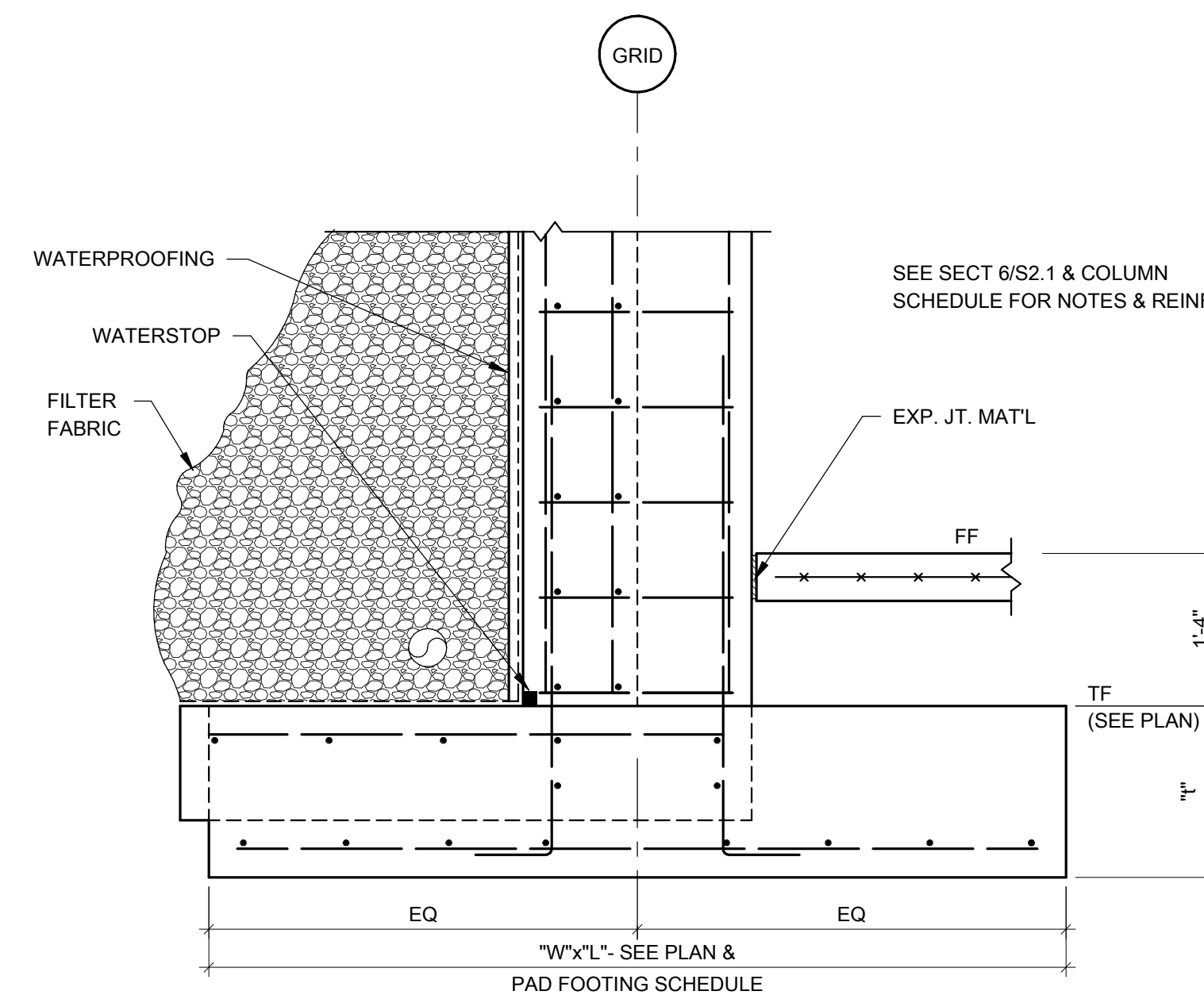
4 SECTION
3/4" = 1'-0"



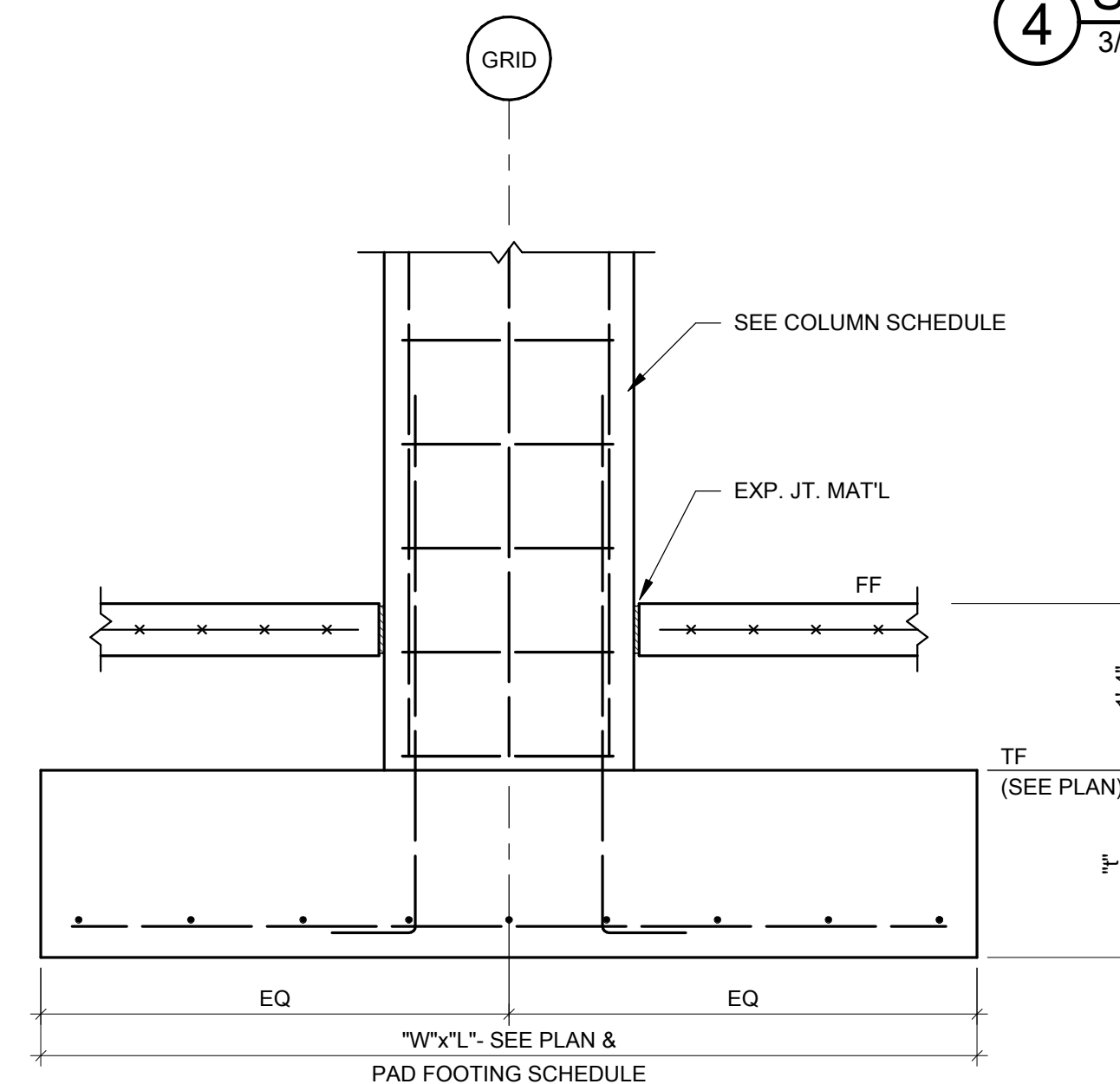
5 SECTION
3/4" = 1'-0"



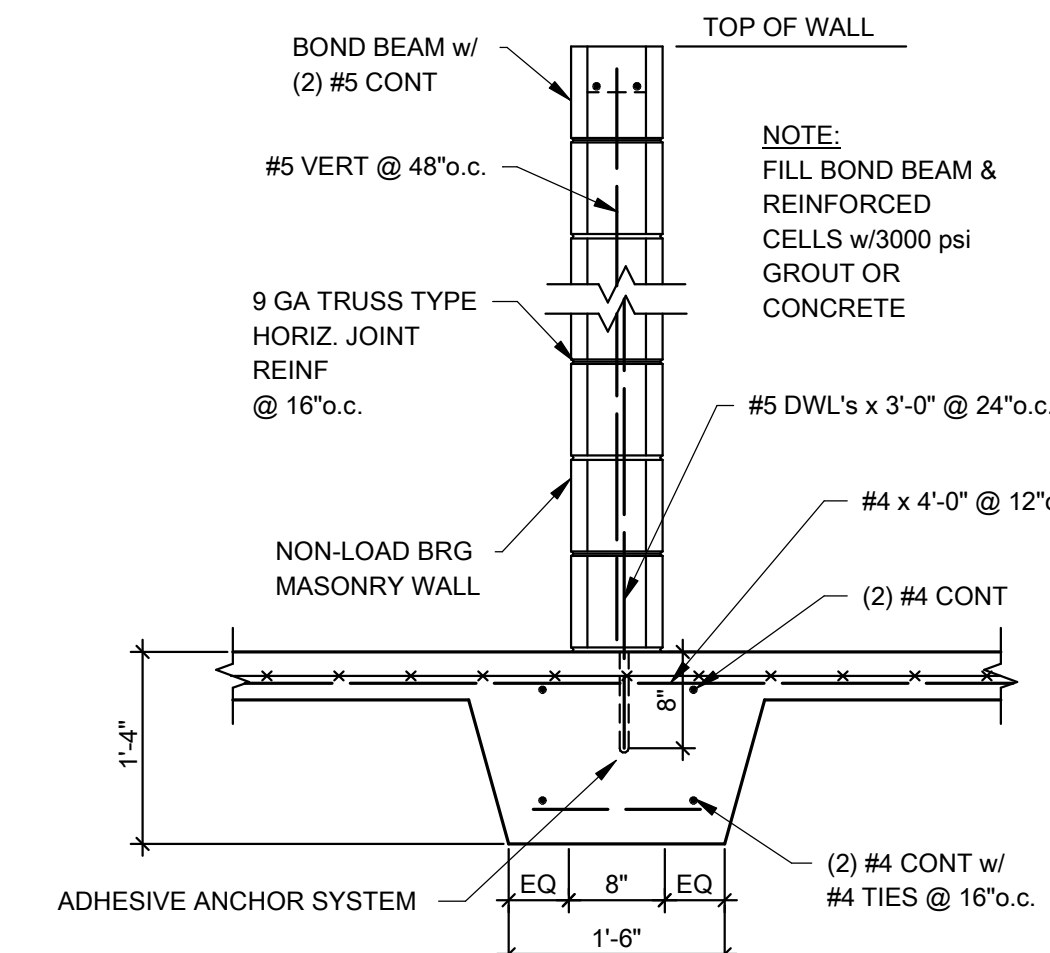
6 SECTION
3/4" = 1'-0"



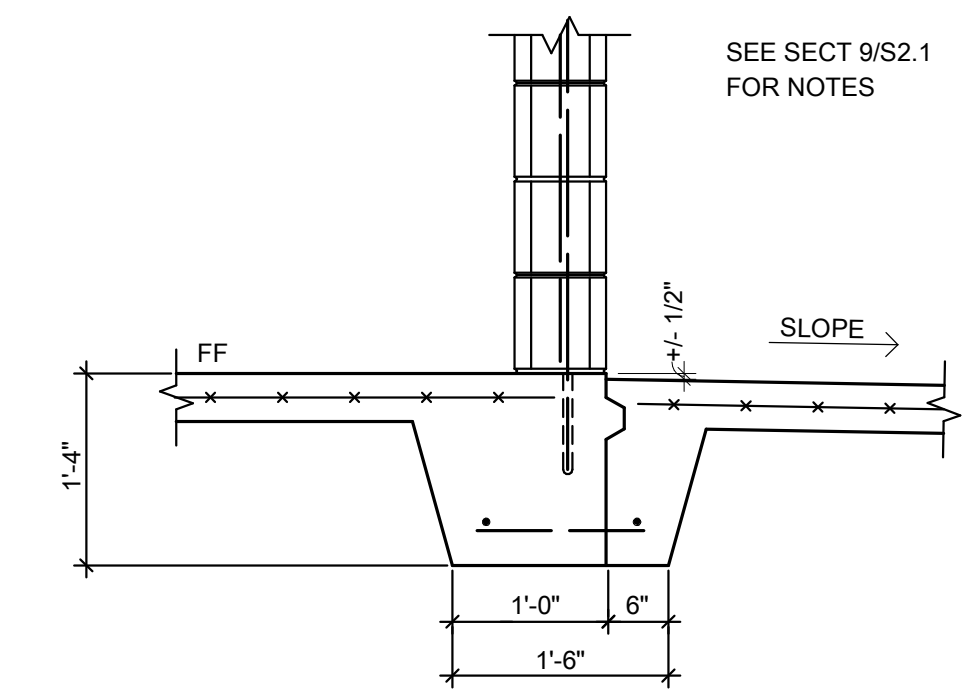
7 SECTION
3/4" = 1'-0"



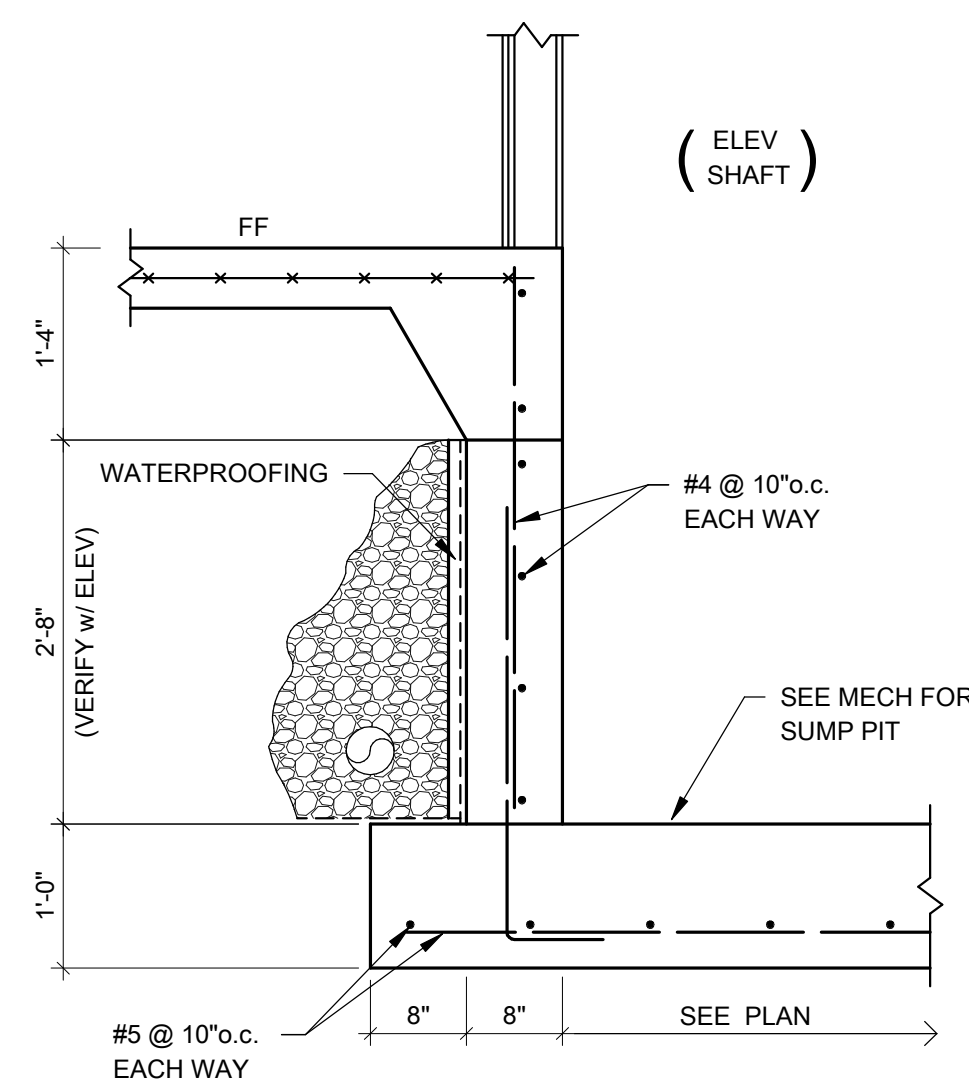
8 SECTION
3/4" = 1'-0"



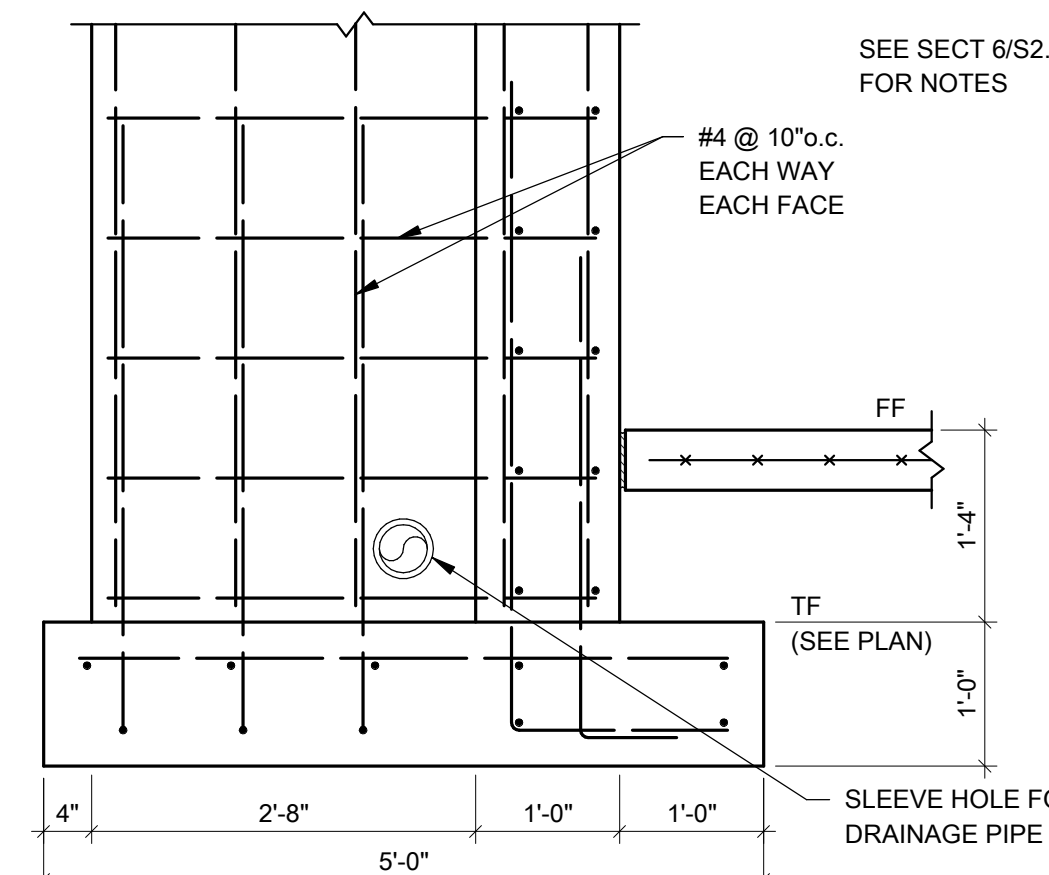
9 THICKENED SLAB DETAIL (TYP)
3/4" = 1'-0"



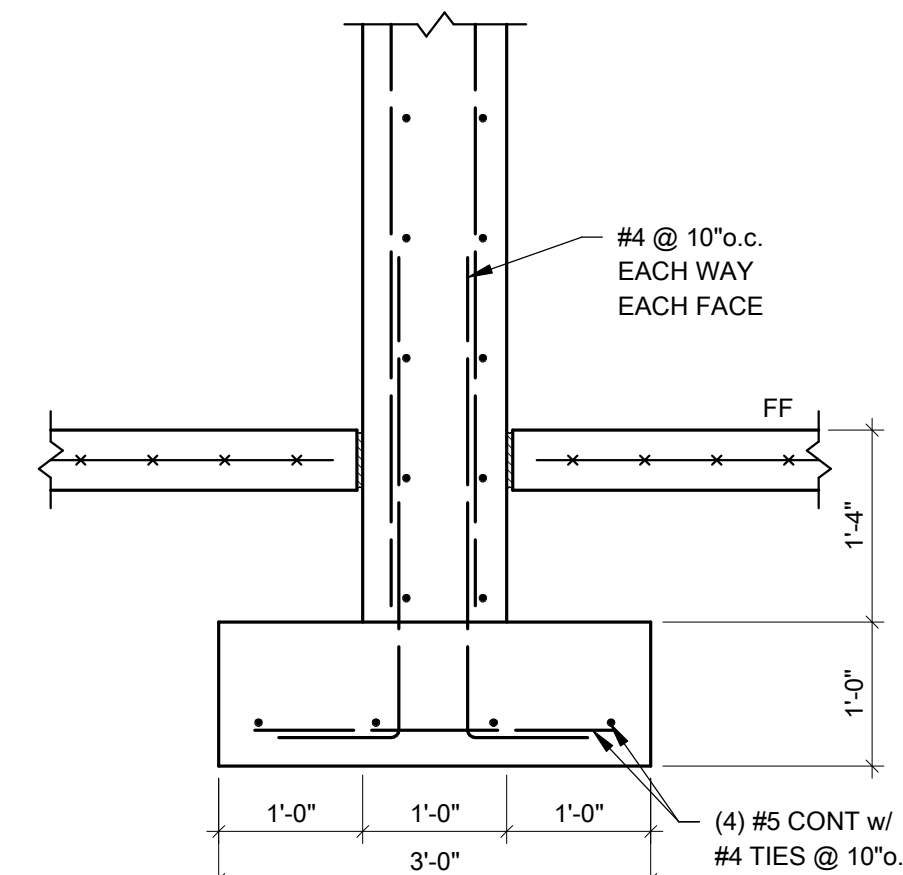
9A THICKENED SLAB w/ CJ DETAIL
3/4" = 1'-0"



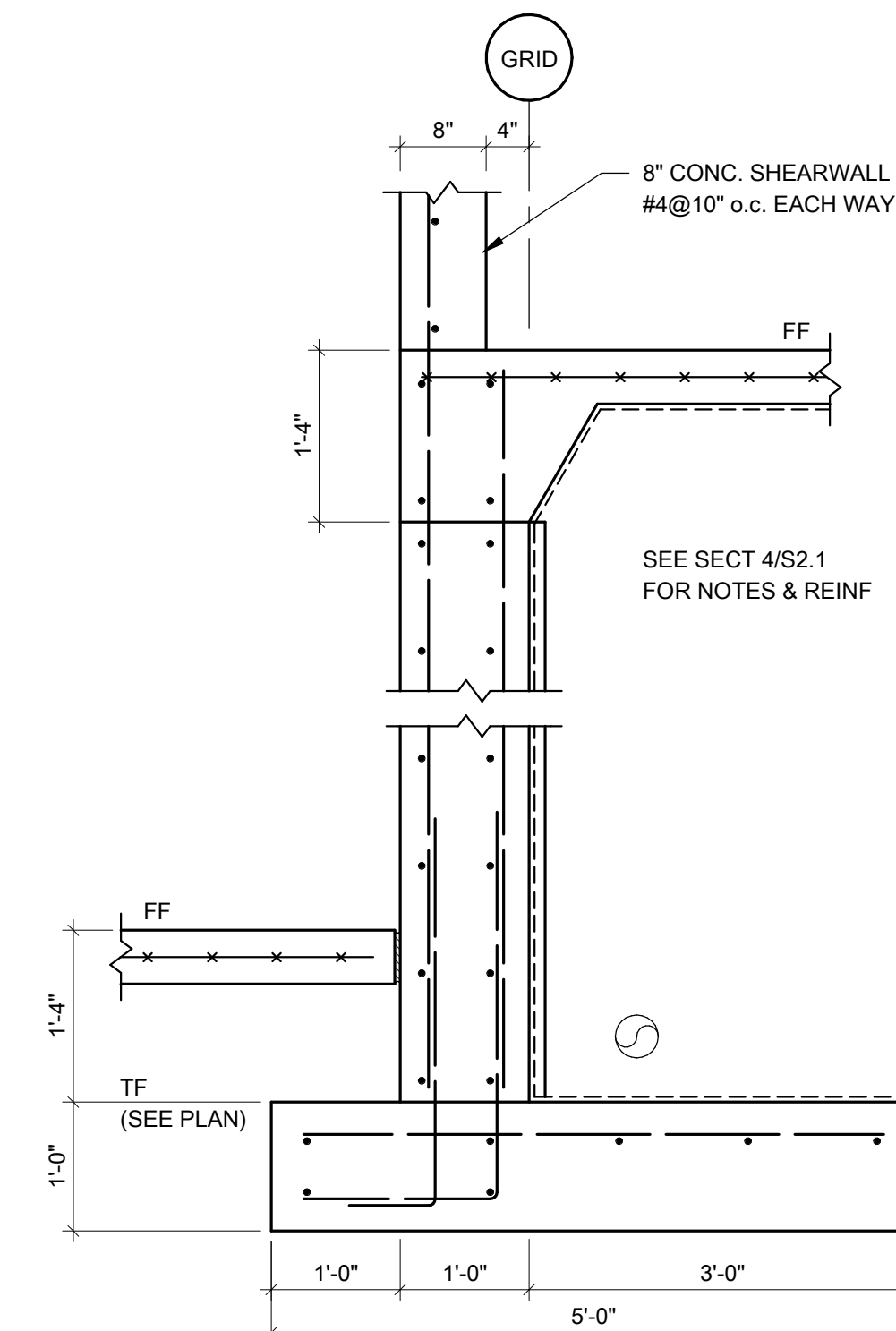
10 SECTION
3/4" = 1'-0"



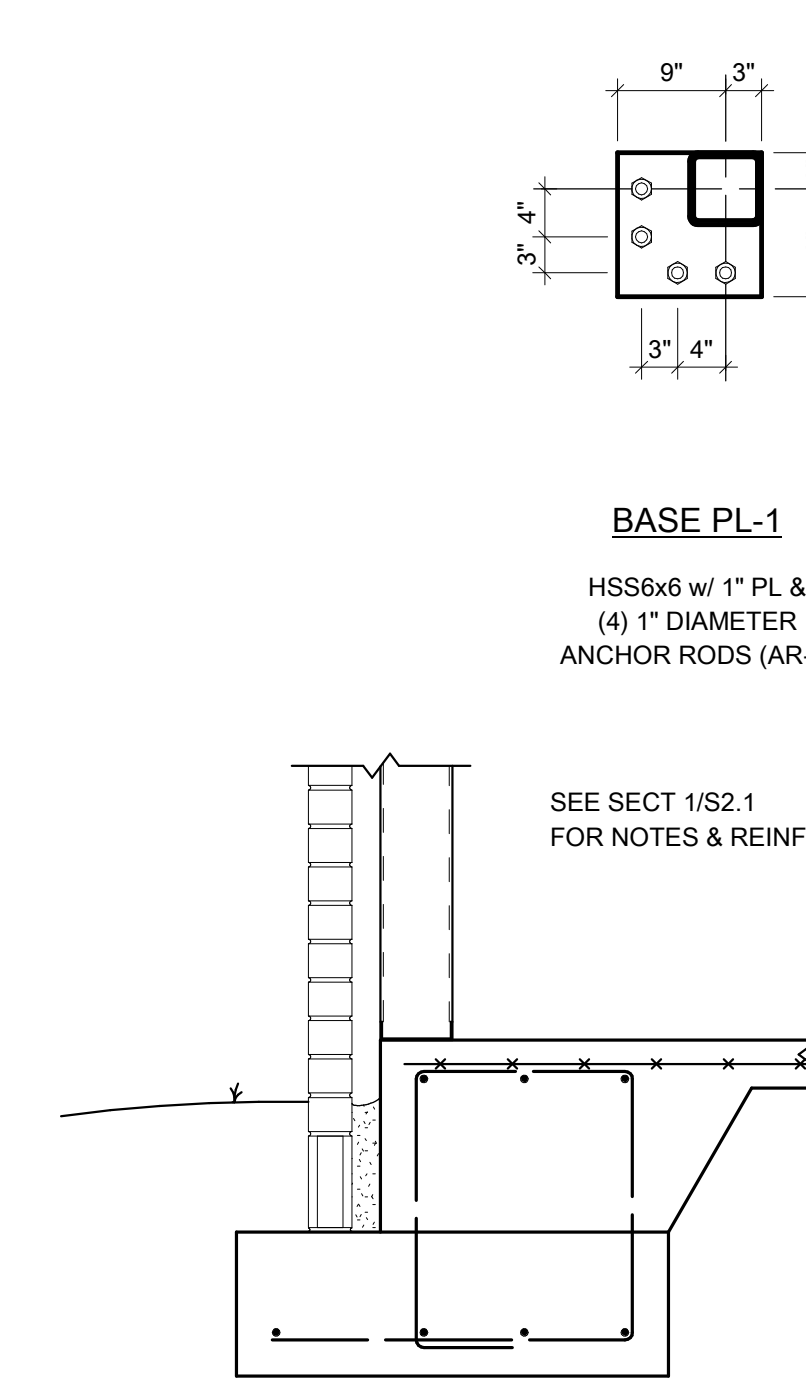
11 SECTION
3/4" = 1'-0"



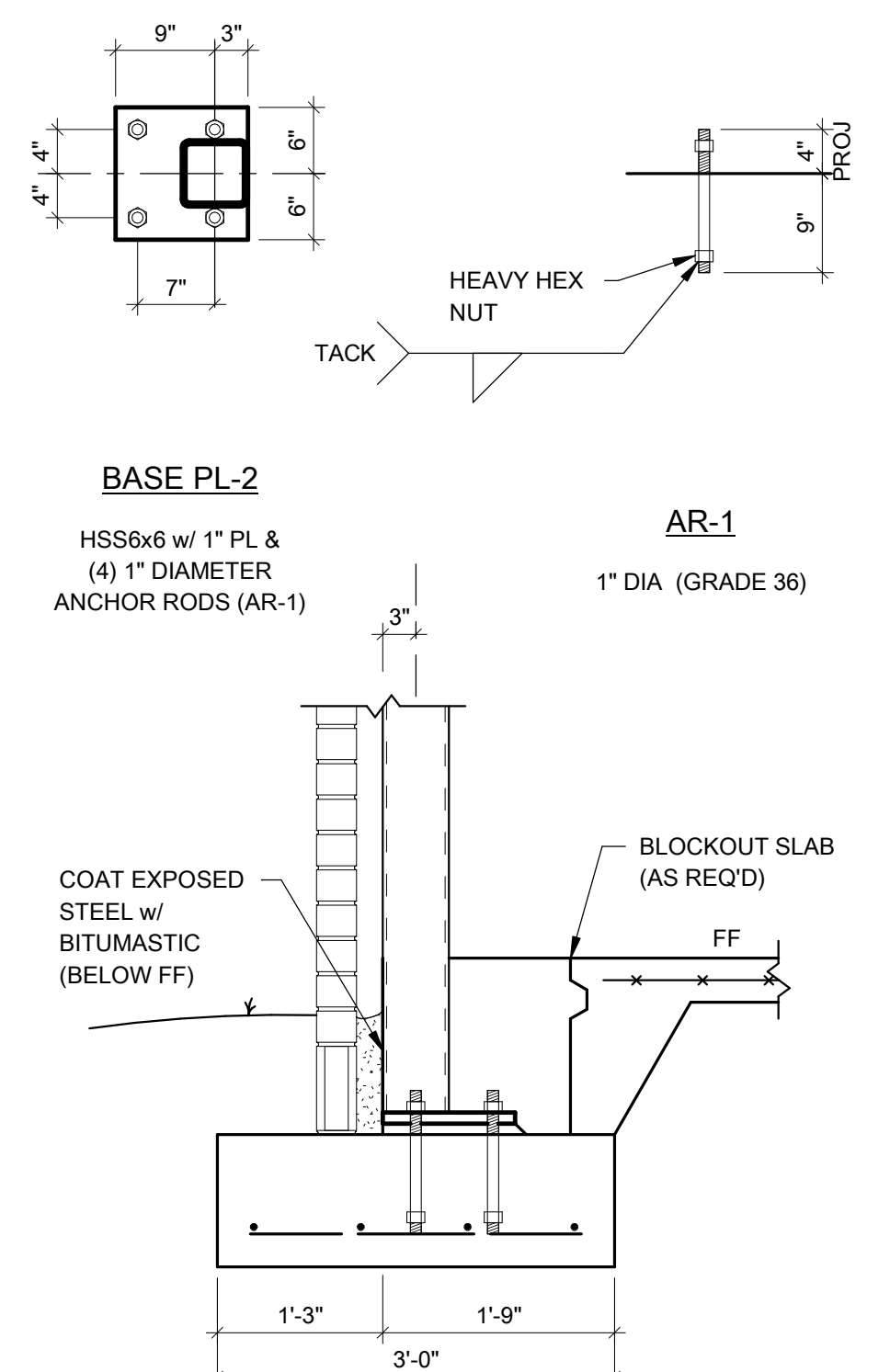
12 SECTION
3/4" = 1'-0"



13 SECTION
3/4" = 1'-0"



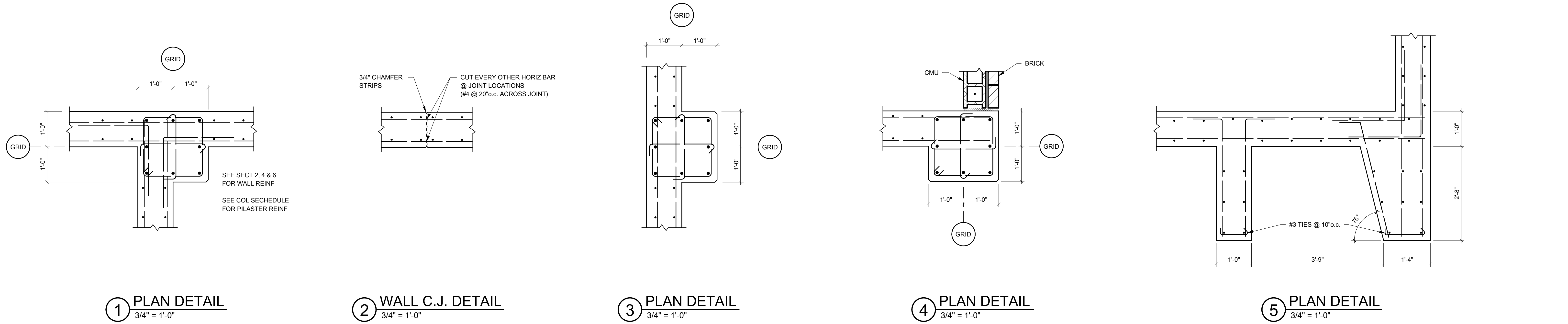
14 SECTION
3/4" = 1'-0"



15 SECTION
3/4" = 1'-0"

Engineering Consultants, Inc.
Structural Engineers
401 West Capitol Avenue, Suite 305
Little Rock, Arkansas 72201-3401
Phone No: (501) 376-3752
Fax No: (501) 376-7314
JOB# 16-175

STATE OF ARKANSAS
REGISTERED PROFESSIONAL ENGINEER
No. 89053
9/19/2016



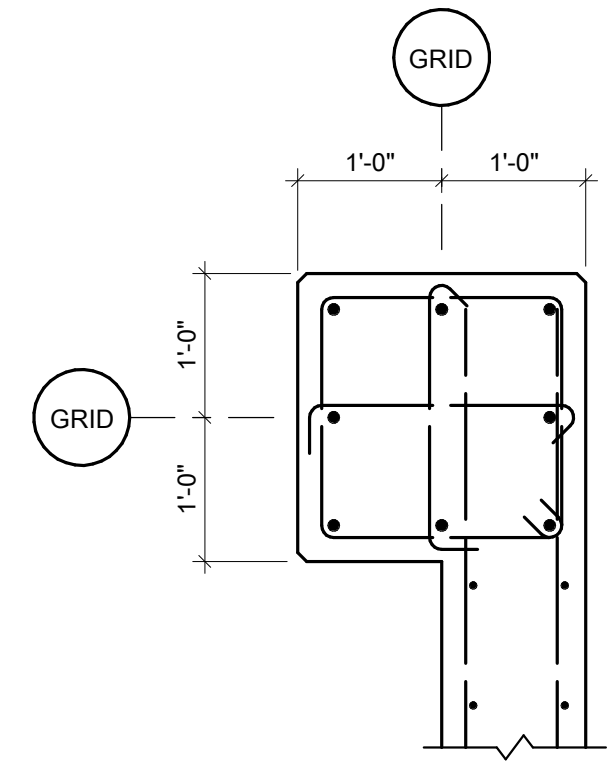
1 PLAN DETAIL
3/4" = 1'-0"

2 WALL C.J. DETAIL
3/4" = 1'-0"

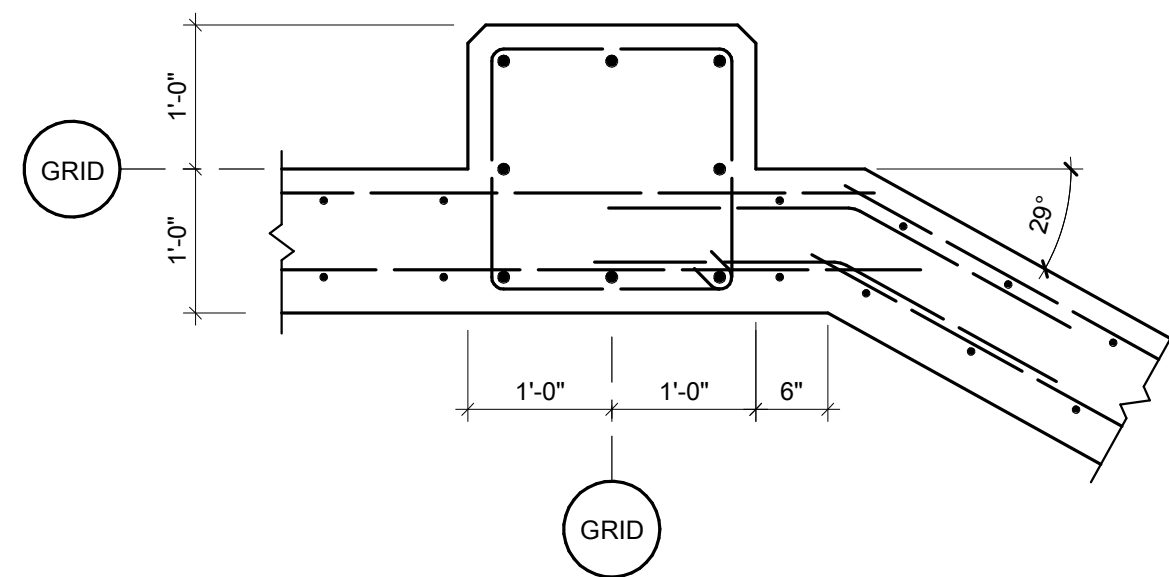
3 PLAN DETAIL
3/4" = 1'-0"

4 PLAN DETAIL
3/4" = 1'-0"

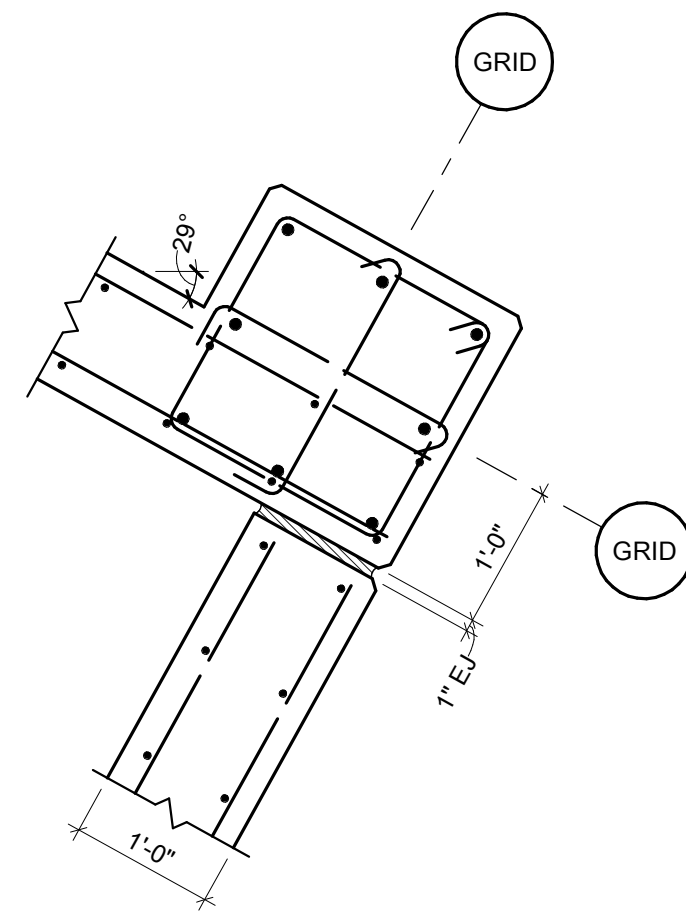
5 PLAN DETAIL
3/4" = 1'-0"



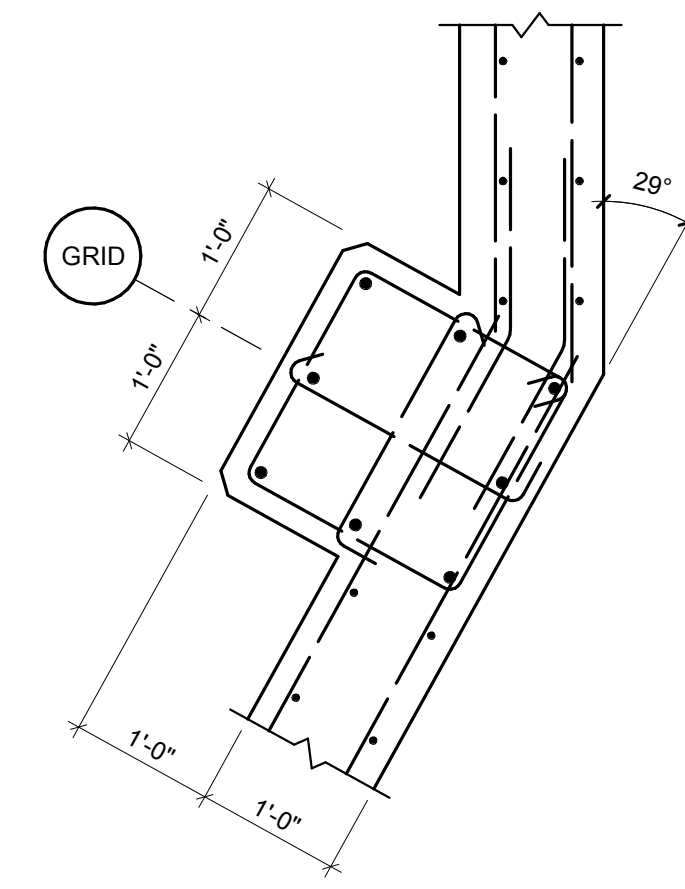
6 PLAN DETAIL
3/4" = 1'-0"



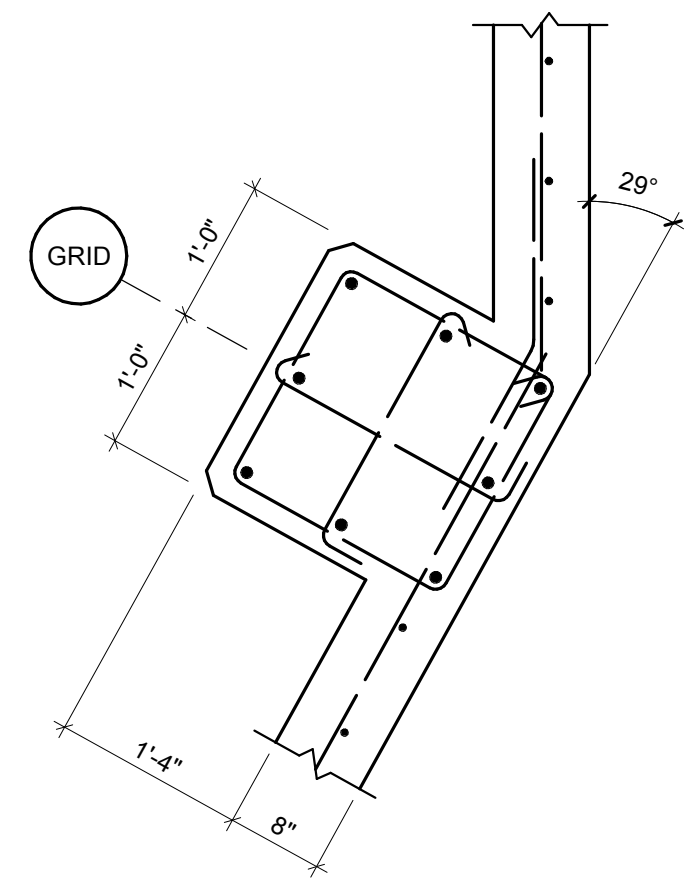
7 PLAN DETAIL
3/4" = 1'-0"



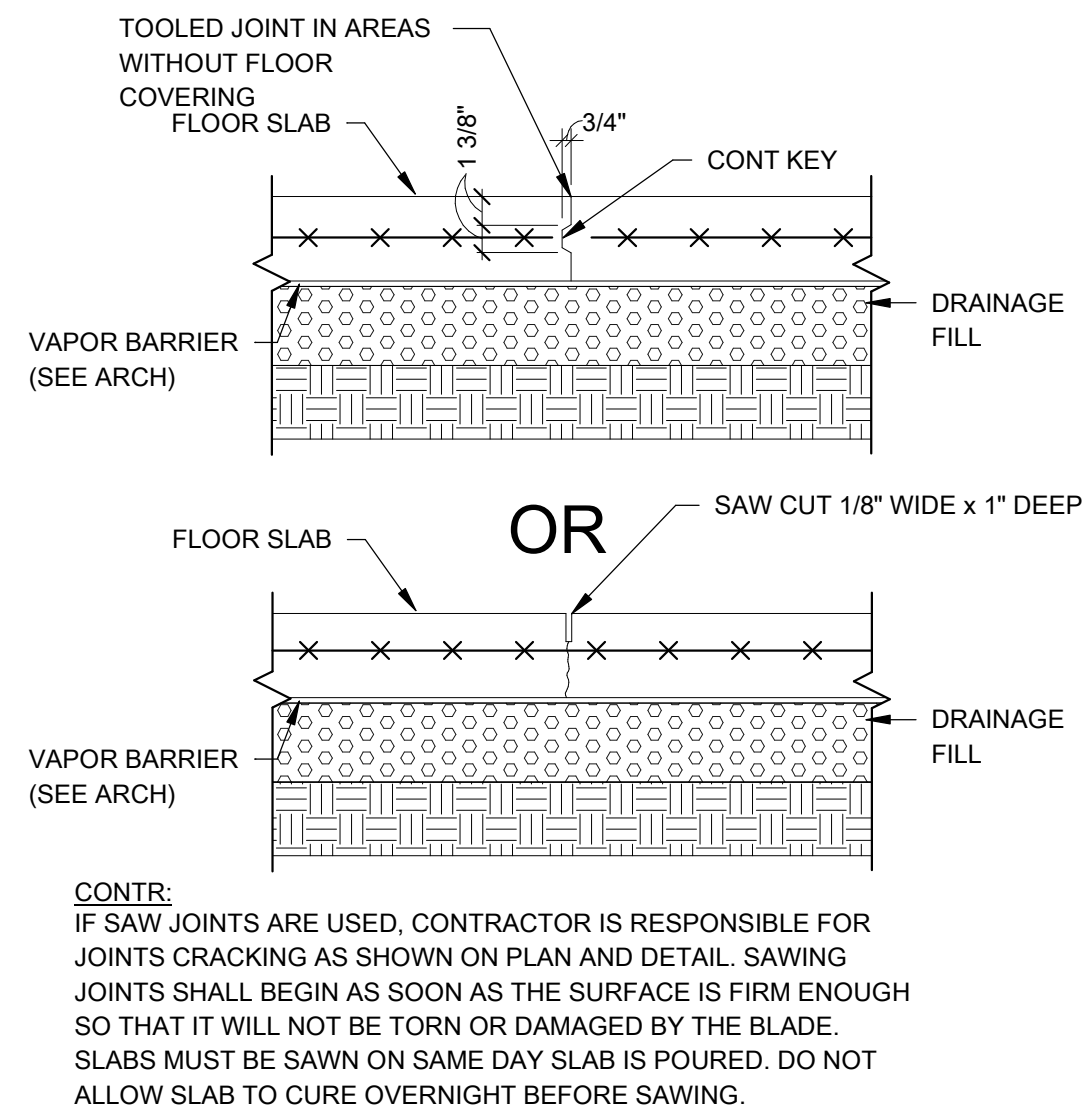
8 PLAN DETAIL
3/4" = 1'-0"



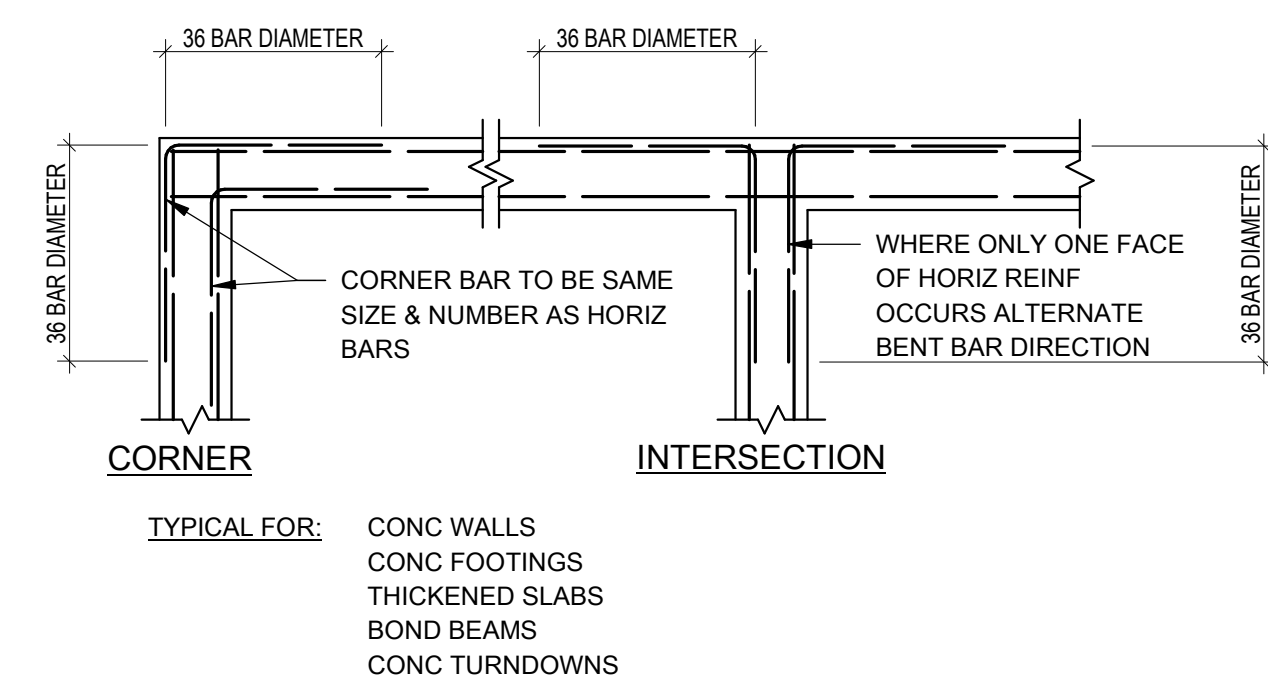
9 PLAN DETAIL
3/4" = 1'-0"



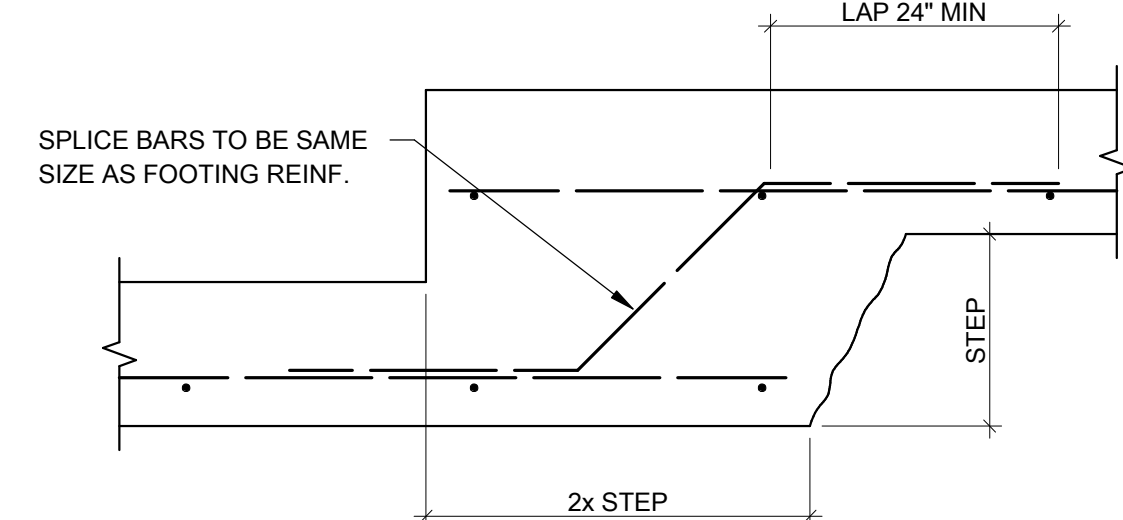
10 PLAN DETAIL
3/4" = 1'-0"



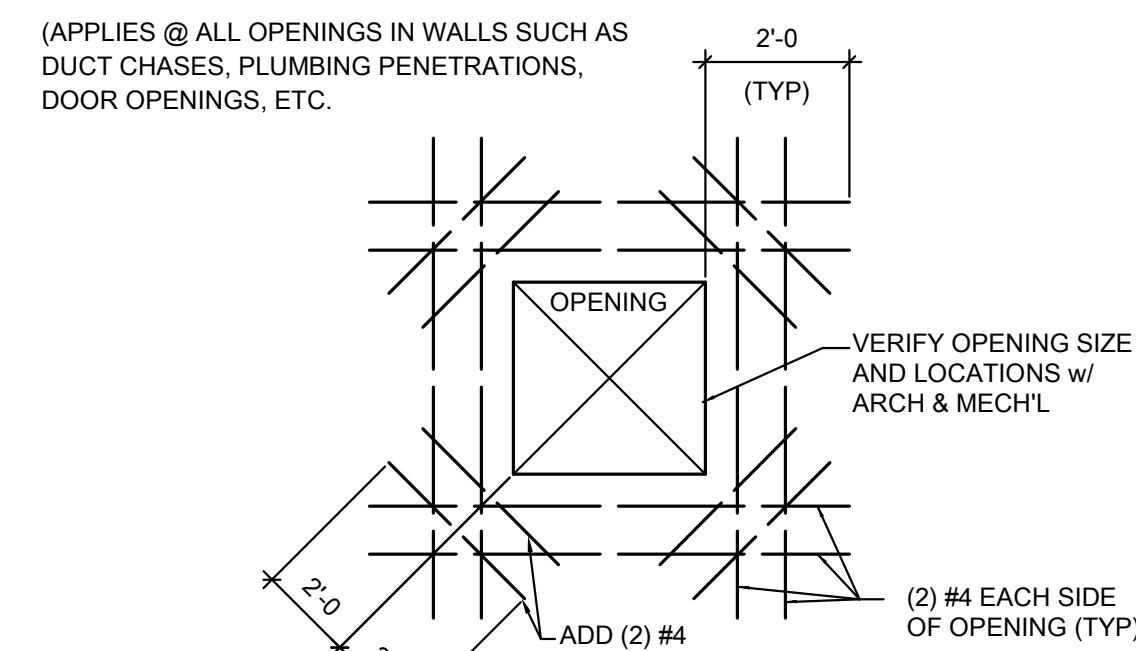
A CONTROL JOINT DETAIL
3/4" = 1'-0"



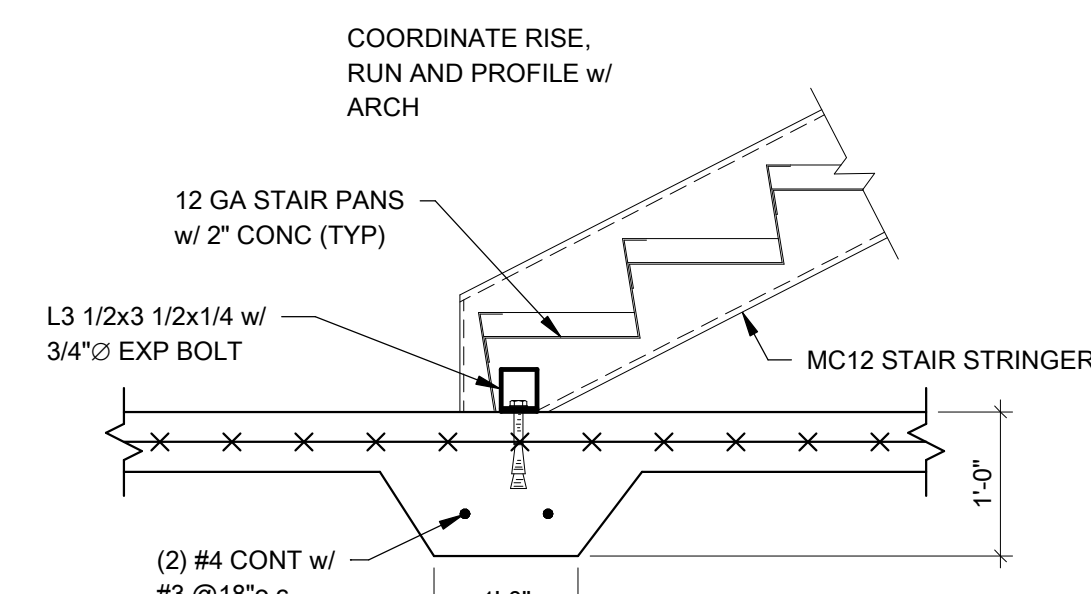
B TYPICAL CORNER BAR DETAIL
3/4" = 1'-0"



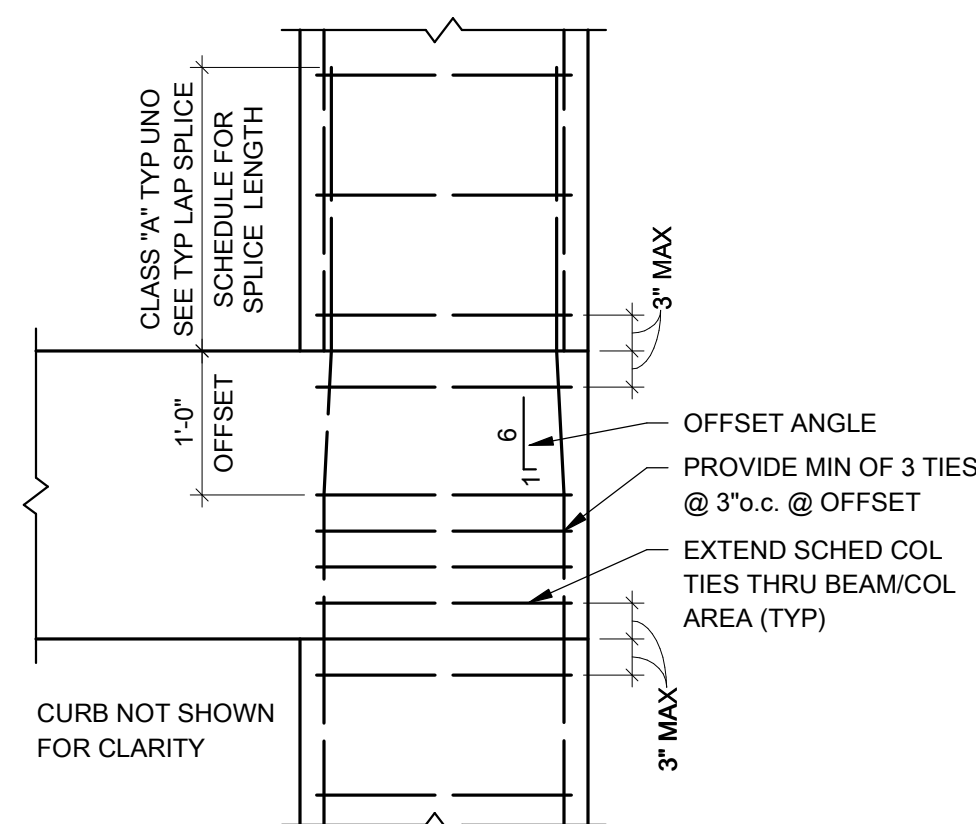
C CONT FOOTING STEP DETAIL
3/4" = 1'-0"



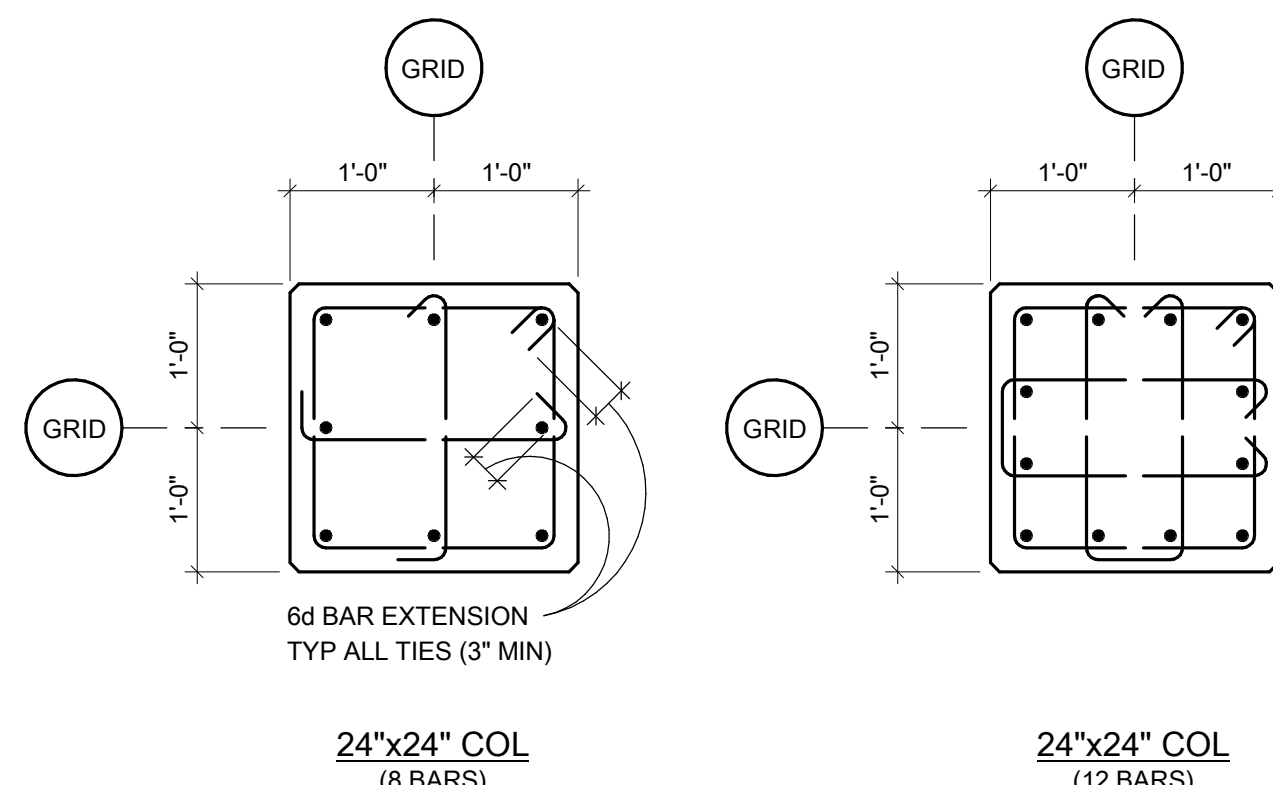
D TYPICAL REINFORCING @ OPENING IN WALL
3/4" = 1'-0"



E STAIR AT FOUNDATION
3/4" = 1'-0"



G COLUMN SPLICE DETAIL
3/4" = 1'-0"



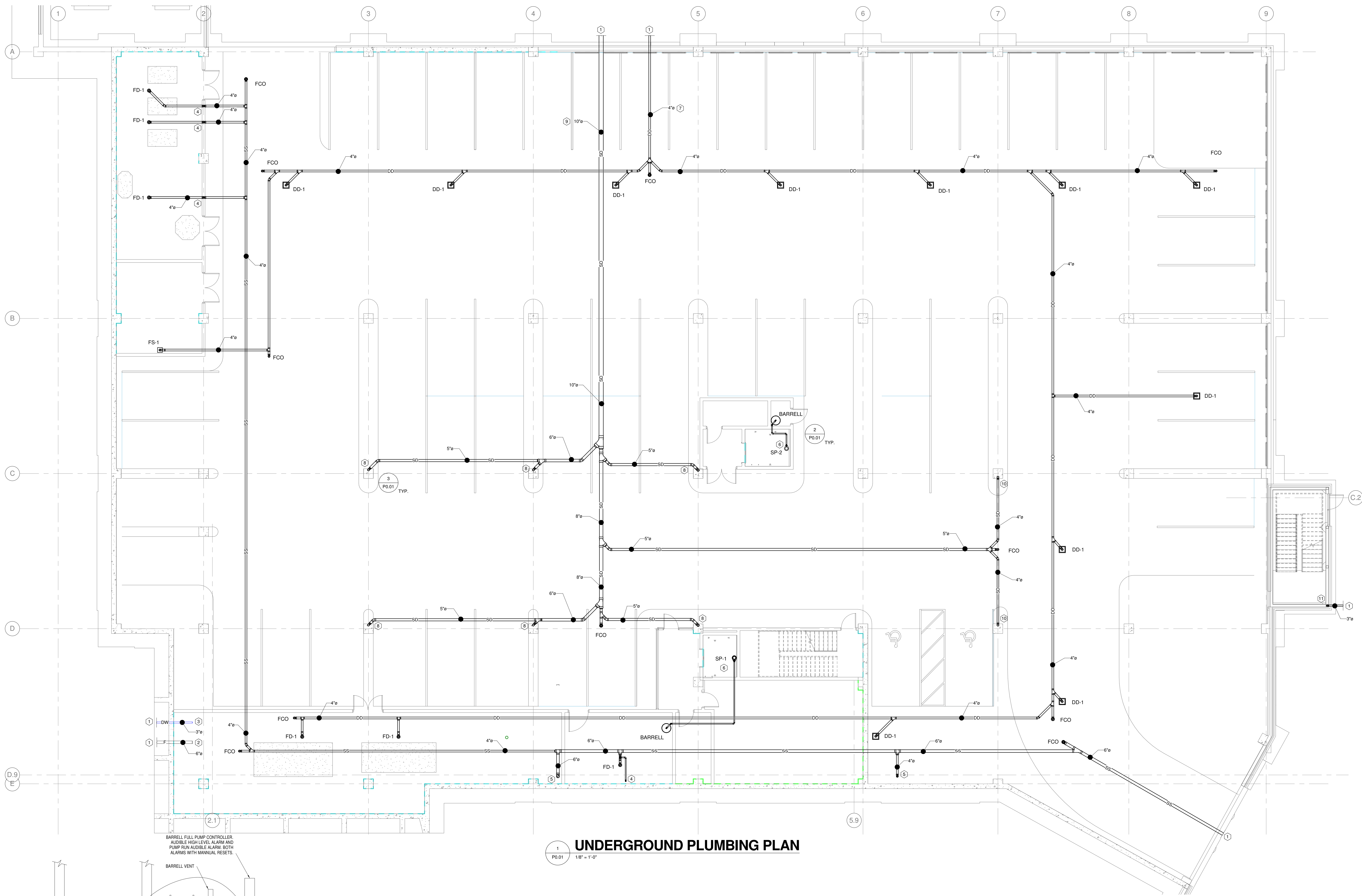
F COLUMN REINFORCING DETAILS
3/4" = 1'-0"

CONCRETE COLUMN SCHEDULE		
MARK	LxW	REINFORCEMENT
C1	24x24	(8) #8 VERT w/ #3 TIES @ 10" o.c.
C2	24x24	(12) #10 VERT w/ #3 TIES @ 10" o.c.

Engineering Consultants, Inc.
Structural Engineers

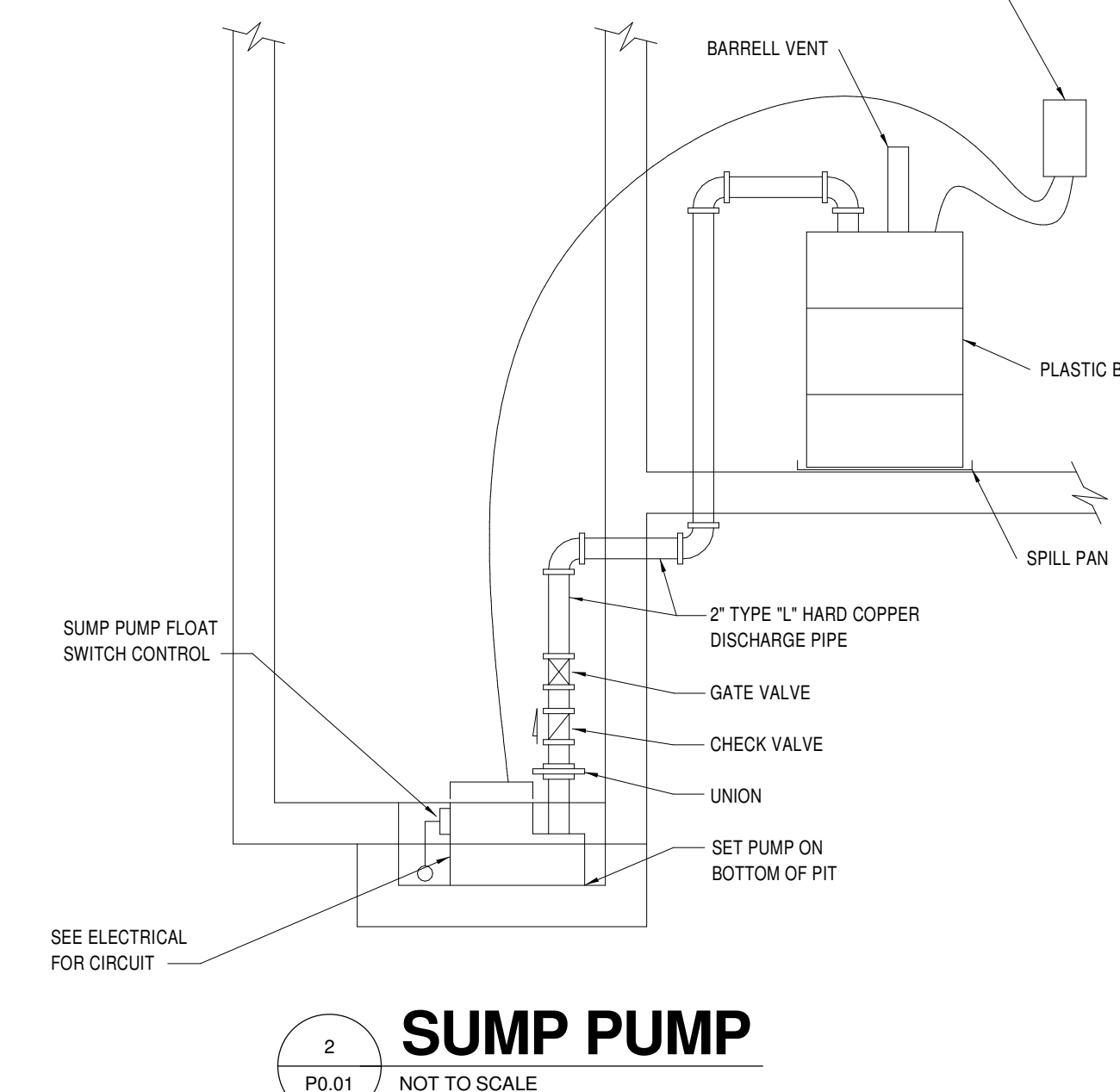
401 West Capitol Avenue, Suite 305
Little Rock, Arkansas 72201-3401
Phone No: (501) 376-3752
Fax No: (501) 376-7314
JOB# 16-175

STATE OF ARKANSAS
REGISTERED PROFESSIONAL ENGINEER
No. 8903
9/19/2016



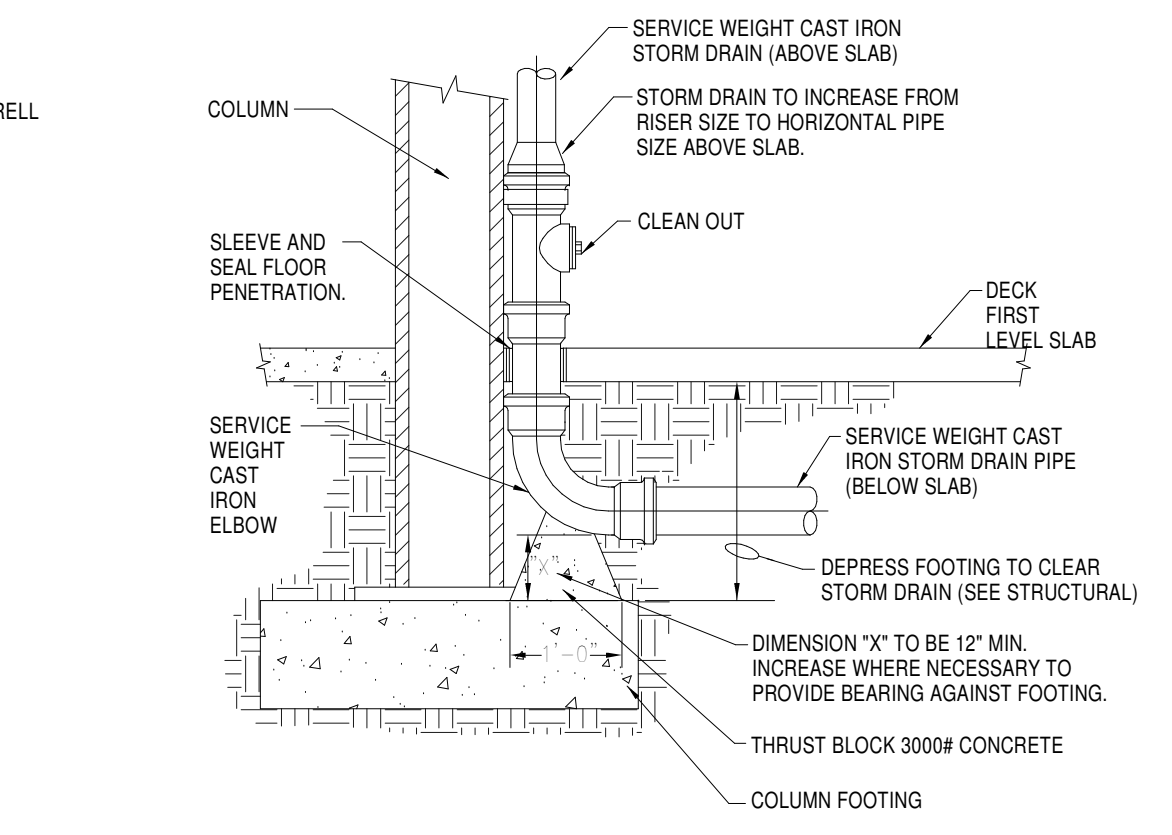
1
P0.01 1/8" = 1'-0"

UNDERGROUND PLUMBING PLAN



2
P0.01 NOT TO SCALE

SUMP PUMP



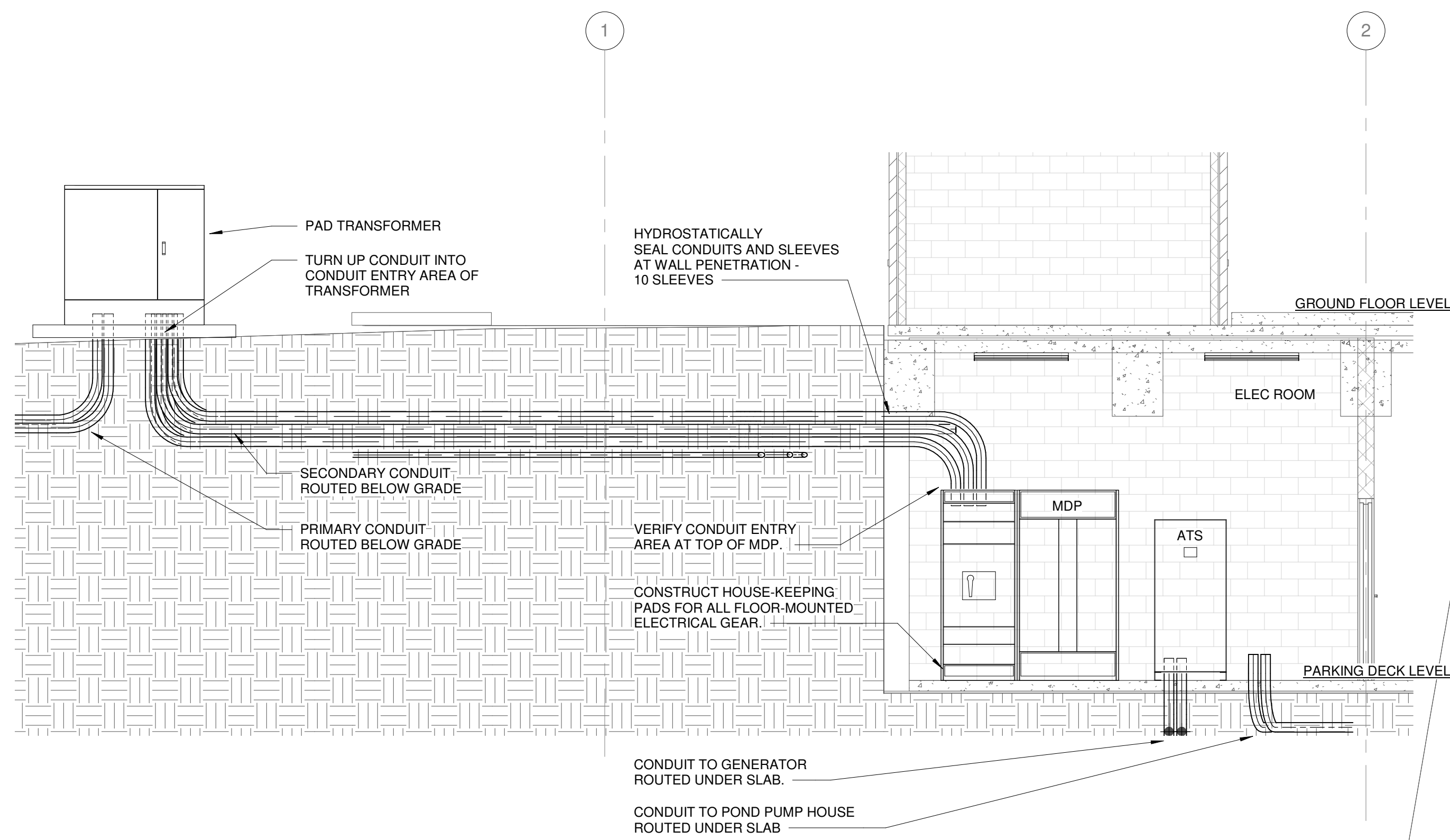
3
P0.01 NOT TO SCALE

TYPICAL STORM DRAIN RISER

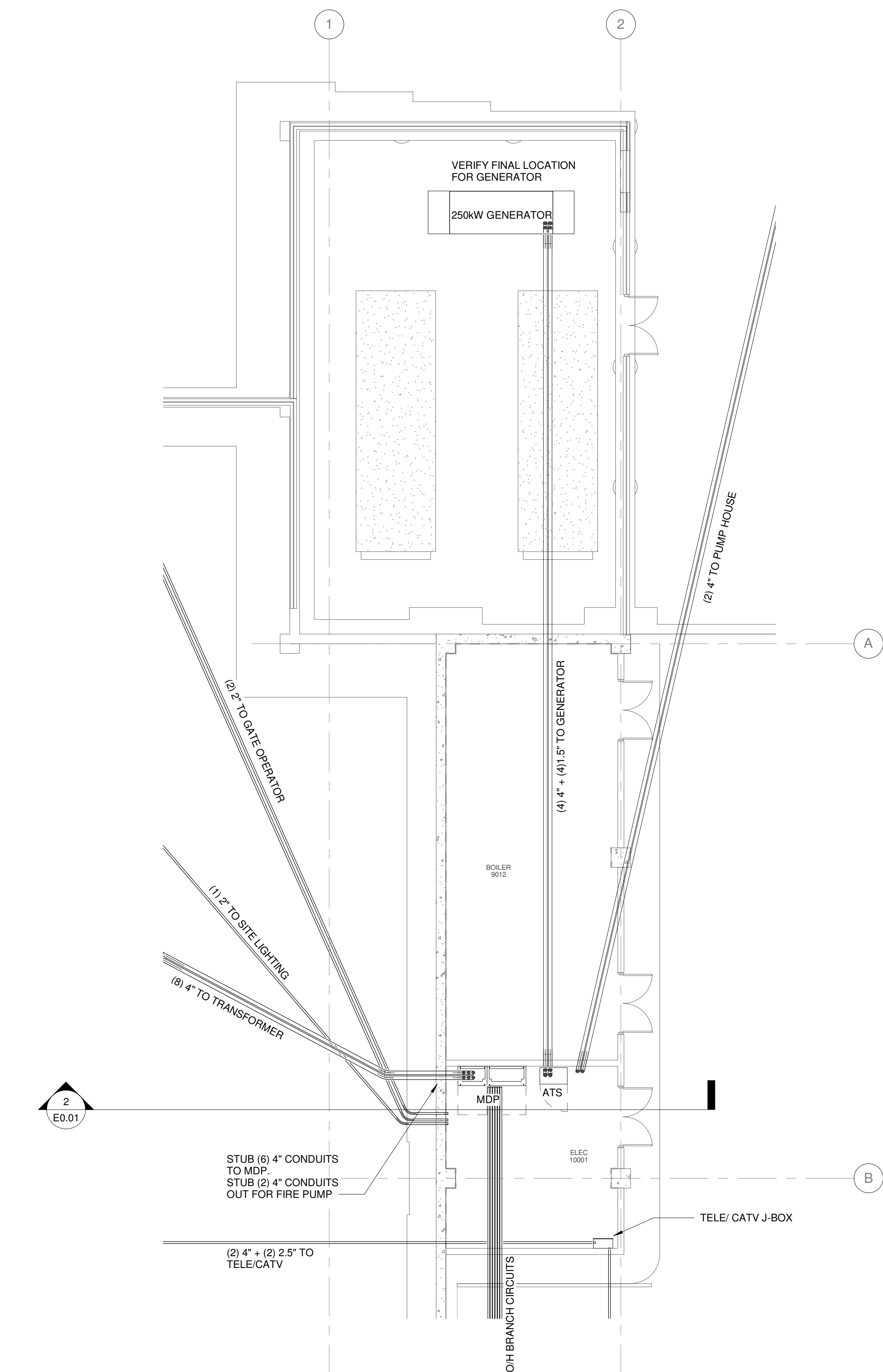
PLUMBING FIXTURE SCHEDULE					
MARK	DESCRIPTION	WASTE	C.W.	H.W.	MOUNTING
DD-1	DECK DRAIN	4"	---	---	DECK
FD-1	FLOOR DRAIN	4"	---	---	FLOOR
FS-1	FLOOR SINK	4"	---	---	FLOOR

- KEYED NOTES:**
- SEE CIVIL FOR CONTINUATION.
 - FIRE PROTECTION SERVICE MAIN, CAP WITHIN MECHANICAL ROOM. SLEEVE AND SEAL WALL PENETRATION.
 - DOMESTIC WATER SERVICE MAIN, CAP WITHIN MECHANICAL ROOM. SLEEVE AND SEAL WALL PENETRATION.
 - 2" SANITARY SEWER VENT STUBBED OUT ABOVE FLOOR.
 - SANITARY SEWER BRANCH LINE STUBBED OUT ABOVE FLOOR.
 - 2" SUMP PUMP DRAIN LINE ROUTED FROM ELEVATOR SUMP BELOW SLAB TO STUB UP ABOVE FLOOR IN MECHANICAL CLOSET.
 - PARKING DECK STORM DRAIN LINE.
 - 4" STORM DRAIN RISER, STUBBED OUT ABOVE FLOOR. INCREASE SIZE TO 5" ABOVE FLOOR BEFORE PIPE TURNS HORIZONTAL.
 - ROOF PRIMARY STORM DRAIN LINE.
 - 4" STORM DRAIN RISER STUBBED OUT ABOVE FLOOR.
 - 3" STORM DRAIN RISER STUBBED OUT ABOVE FLOOR.

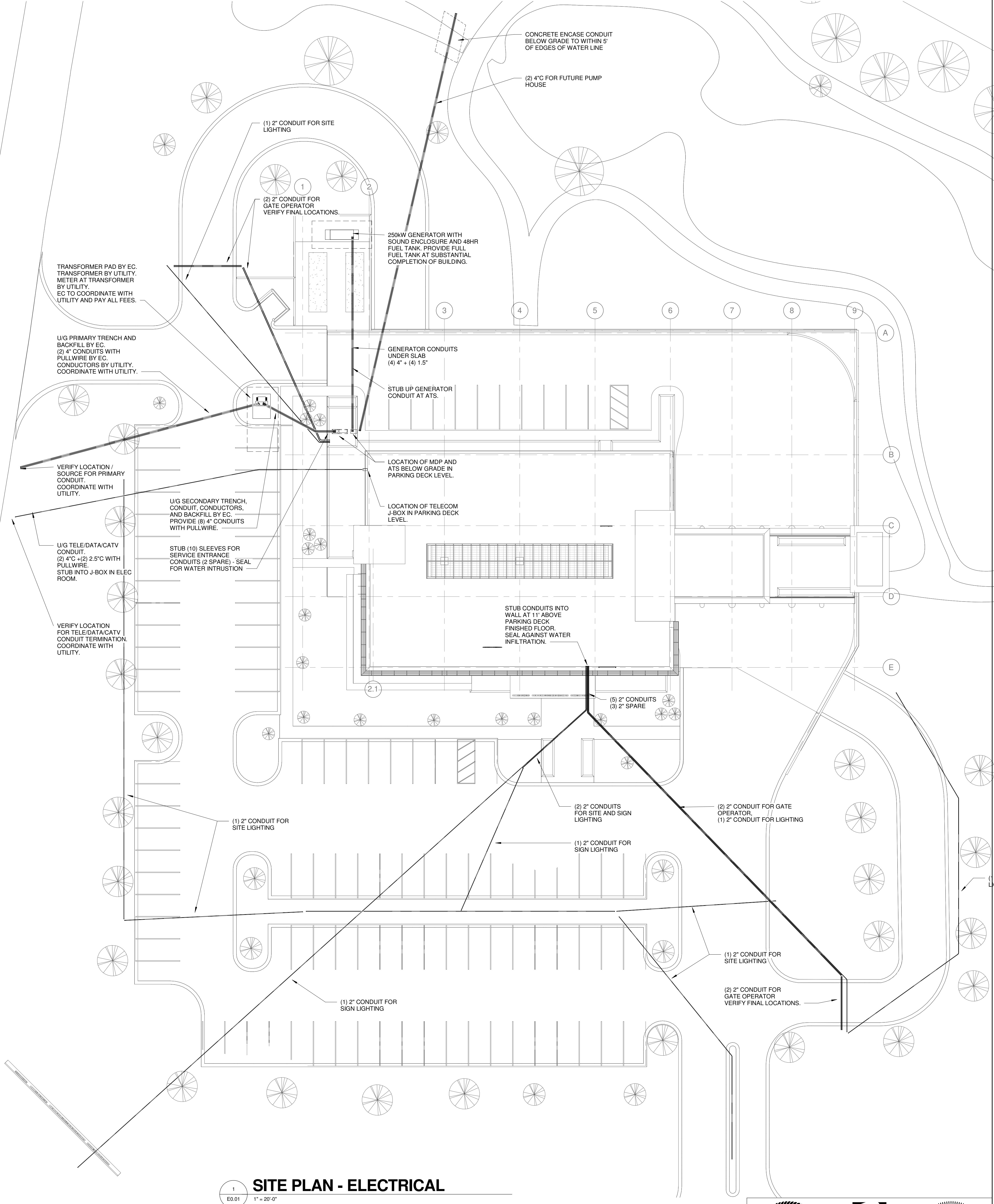




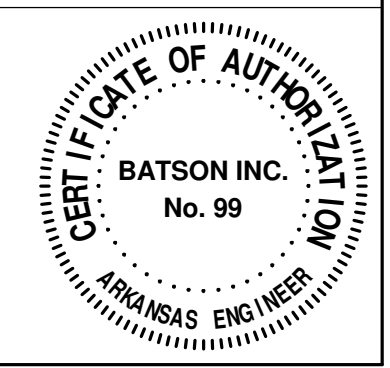
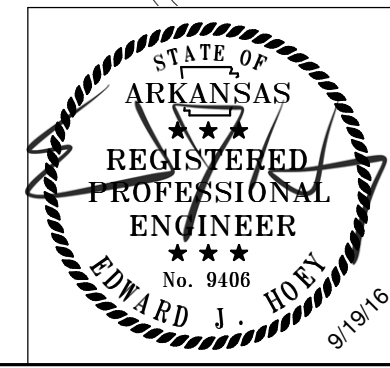
SECTION - ELECTRICAL SERVICE ENTRANCE
E0.01 1/4" = 1'-0"



PARTIAL PARKING LEVEL POWER PLAN
E0.01 1/8" = 1'-0"



SITE PLAN - ELECTRICAL
E0.01 1" = 20'-0"



WITTENBERG, DELONY & DAVIDSON ARCHITECTS

PROJECT		CONTENT	
FIRST NATIONAL BANK HILLTOP BRANCH & OFFICE BUILDING		UNDERGROUND ELECTRICAL PACKAGE	
REVISION	DATE	DESCRIPTION	
09-19-2016			
JOB	16-028		
E0.01			