

COMMERCIAL SITE DEVELOPMENT PLANS

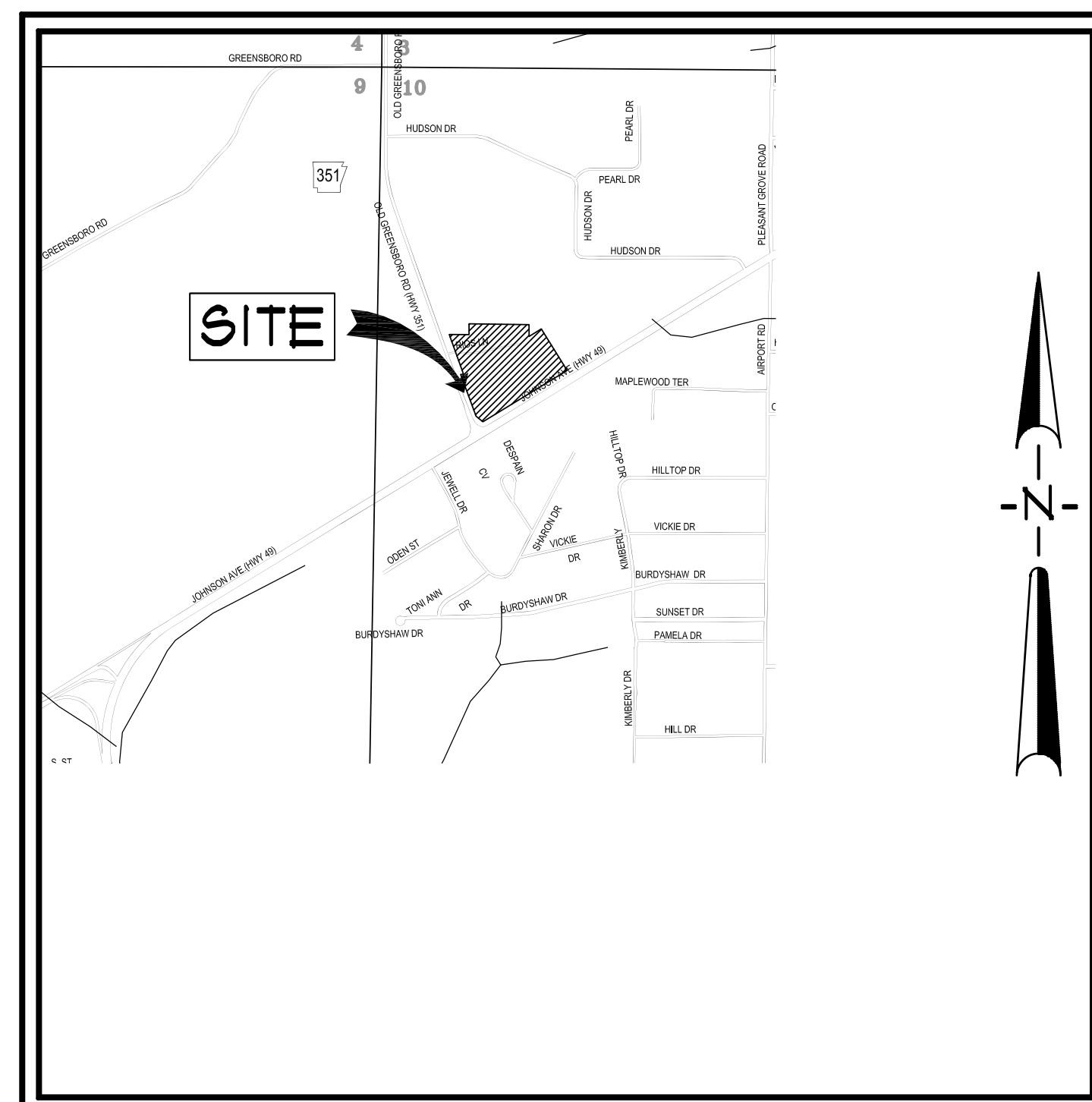
# FIRST NATIONAL BANK

3500 EAST JOHNSON AVENUE

PREPARED FOR  
FIRST NATIONAL BANK

JONESBORO, ARKANSAS  
JUNE, 2016

Sidewalks Required



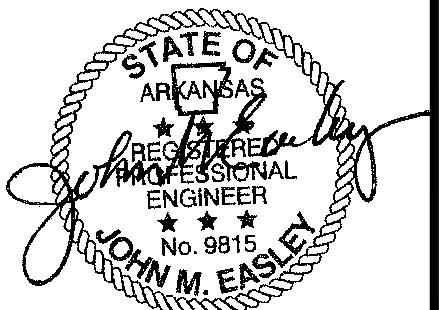
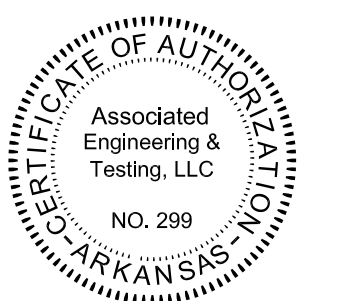
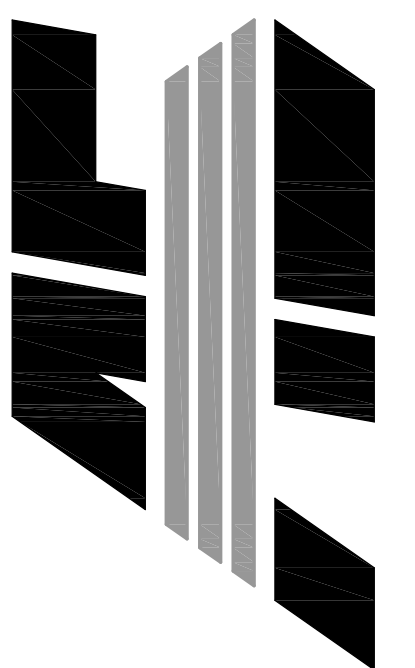
VICINITY MAP  
SCALE: 1" = 1,000'

## INDEX TO SHEETS

C001	INDEX SHEET
C002	GENERAL NOTES
C003	BOUNDARY & TOPOGRAPHIC SURVEY
C004	SITE PLAN
C005	DEMOLITION PLAN
C006	UTILITY PLAN
C007	GRADING PLAN
C008	EROSION CONTROL PLAN
C009	LANDSCAPE PLAN
C010	STANDARD DETAILS
C011	STANDARD DETAILS
C012	EROSION CONTROL DETAILS

FIRST NATIONAL BANK  
3500 EAST JOHNSON AVENUE  
HWY. 49 & HWY. 351  
JONESBORO, ARKANSAS

ASSOCIATED  
ENGINEERING, LLC  
CIVIL ENGINEERING • LAND SURVEYING  
LAND PLANNING  
103 SOUTH CHURCH STREET • P.O. BOX 1462  
JONESBORO, AR 72403  
PH: 870-932-3594 • FAX: 870-935-1263



NO.	DESCRIPTION	DATE
1	ADEQ COMMENTS	07/13/16

## INDEX SHEET

DATE:	06/27/16	DRAWN:	COH
CADD FILE:	15165-SDP	CHECKED:	JME
DWG#:	0414104.000X	SHEET	
SCALE:	1" = 40'	C001	

RESOURCE LIST

1. CITY OF JONESBORO - PLANNING AND ZONING  
OTIS SPRIGGS, CITY PLANNER  
307 VINE STREET  
JONESBORO, AR 72401  
870-932-0406
2. CITY OF JONESBORO - ENGINEERING  
CRAIG LIGHT, P.E.  
CITY ENGINEER  
307 VINE STREET  
JONESBORO, AR 72401  
870-932-2438
3. CODES DEPT. FIRE MARSHALL  
CRAIG DAVENPORT  
3215 E. JOHNSON AVE.  
JONESBORO, AR 72401  
870-932-2458
4. CITY WATER AND LIGHT - ENGINEERING  
JAKE RICE, P.E., P.S. - MANAGER  
400 EAST MONROE, P.O. BOX 1289  
JONESBORO, AR 72403  
870-932-3381, FAX: 870-930-3303  
SUSAN MERIDETH - ACTING ENGINEERING SERVICES DIRECTOR  
870-930-3320
5. CENTERPOINT ENERGY  
KEITH CRAIG - SERVICE TECHNICIAN  
3013 OLD FEEDHOUSE ROAD  
JONESBORO, AR 72404  
CELL: 870-887-3750
6. AT&T  
723 CHURCH, ROOM B 27  
JONESBORO, AR 72403  
PHIL FARLEY - AREA MANAGER INSTALLATION & REPAIR  
870-972-7827, FAX: 870-972-7610  
TOMMY GRAY - AREA MANAGER ENGINEERING DESIGN  
870-972-7587, FAX: 870-972-7533
7. SUDDEN LINK - CABLE TV  
1520 SOUTH CARAWAY ROAD  
JONESBORO, AR 72401  
BOB PROCK - CONSTRUCTION MANAGER  
870-933-8429 EXT. 212, FAX: 870-972-8141  
DEANNA HORNBACK - MANAGER  
JIMMY YANCY - FIELD MANAGER  
CELL: 870-219-8583

BENCHMARK LIST

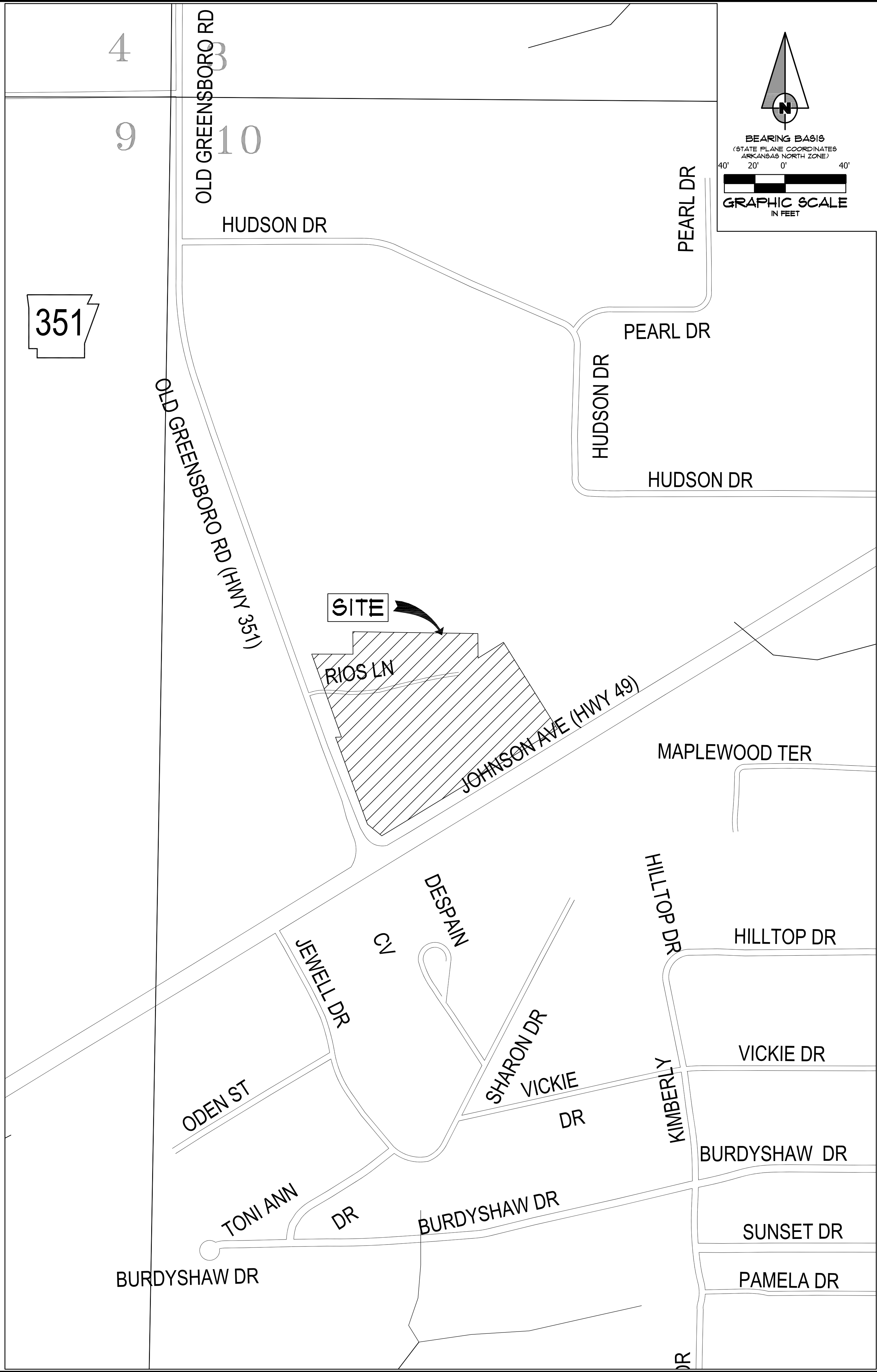
1. ELEVATIONS SHOWN HEREON ARE IN FEET AND DECIMAL PARTS THEREOF AND REFER TO MSL DATUM.
2. BENCHMARK #1 IS CHISELED SQUARE IN TOP OF 36" RCP LOCATED APPROXIMATELY 3 FEET SOUTH AND 116 FEET EAST OF THE SOUTHEAST CORNER OF SUBJECT PROPERTY.  
ELEV. = 265.94 (NAVD 88)  
BENCHMARK #2 IS CHISELED SQUARE IN CENTER OF INLET ON THE EAST SIDE OF McLELLAN DRIVE LOCATED APPROXIMATELY 218 FEET NORTH AND 14 FEET EAST OF THE SOUTHWEST CORNER OF SUBJECT PROPERTY.  
ELEV. = 274.16 (NAVD 88)

GENERAL NOTES

1. SUBJECT PROPERTY IS LOCATED WITHIN ZONE "X", AREAS DETERMINED TO BE OUTSIDE 500-YEAR FLOOD PLAIN, AS DESIGNATED BY FEDERAL EMERGENCY MANAGEMENT AGENCY FLOOD INSURANCE RATE MAP FOR THE CITY OF JONESBORO, COMMUNITY PANEL 05031CD044C (PANEL 44 OF 200).  
EFFECTIVE DATE - SEPTEMBER 27, 1991.
2. SCREENING AND BUFFERING ARE AS SHOWN.
3. EASEMENTS ARE AS SHOWN.
4. NO KNOWN HISTORICAL STRUCTURES ARE LOCATED ON SUBJECT PROPERTY.
5. DIMENSIONS SHOWN ARE TO THE FACE OF CURB UNLESS OTHERWISE NOTED.

LEGEND

	BOUNDARY LINE		FIRE HYDRANT		GRADED INLET
	LOT LINES		VALVE BOX		DOWNSPOUT
	FOUND IRON PIPE		FIRE PROTECTION		SPRINKLER CONTROL
	FOUND COTTON-PICKIER SPINDLE		EXISTING OVERHEAD ELECTRICAL LINE		MAILBOX
	FOUND REBAR		EXISTING UNDERGROUND ELECTRICAL LINE		TRASH COMPACTOR
	FOUND IRON PIPE W/ PL8 XXX CAP		ELECTRIC TRANSFORMER/ELECTRIC METER		COLUMN
	CITY OF JONESBORO G.P.S. MONUMENT		POWER POLE		BOLLARD
	BENCH MARK		POWER JUNCTION COMM. BOX		HANDICAP SIGN
	R/W MONUMENT		SIGN LIGHTS/FLOOR LIGHTS		EXISTING FENCE LINE
	SET 1 1/4" IRON PIPE W/ PL8 #549 CAP		LIGHT POLE (SINGLE)		EXISTING GROUND CONTOUR
	EXISTING SANITARY SEWER LINE		LIGHT POLE (BACK-BACK)		FINISHED GROUND CONTOUR
	PROPOSED SANITARY SEWER LINE		LIGHT POLE (3 x 90')		EXISTING TREE/SHRUB
	EXISTING SANITARY SEWER MANHOLE		TRAFFIC SIGN		BASIN BOUNDARY
	PROPOSED SANITARY SEWER MANHOLE		TRAFFIC SIGNAL		DRAINAGE FLOW
	EXISTING SANITARY SEWER CLEANOUT		TRAFFIC LIGHT CONTROL		GENERAL DRAINAGE FLOW
	PROPOSED SANITARY SEWER CLEANOUT		TRAFFIC SIGNAL W/ POLE		SWALE FLOW DIRECTION
	PROPOSED SANITARY SEWER SERVICE LINE		EXISTING OVERHEAD COMMUNICATION LINE		SILT FENCE
	EXISTING WATER LINE		EXISTING UNDERGROUND COMMUNICATION LINE		ROCK CHECK DAM
	PROPOSED WATER LINE		EXISTING GAS LINE		RIP RAP AREA
	EXISTING WATER METER		GAS METER		INLET PROTECTION
	PROPOSED WATER METER		EXISTING STORM WATER MANHOLE		ROCK CHECK DAM
	WATER VALVE				



FIRST NATIONAL BANK

3500 EAST JOHNSON AVENUE

HWY. 49 & HWY. 351

JONESBORO, ARKANSAS

ASSOCIATED ENGINEERING, LLC

CIVIL ENGINEERING • LAND SURVEYING  
LAND PLANNING

103 SOUTH CHURCH STREET • P.O. BOX 1462  
JONESBORO, AR 72403  
PH: 870-932-3594 • FAX: 870-935-1263

STATE OF ARKANSAS  
Professional Engineer  
No. 9811  
M. E. EBLE

NO.	DESCRIPTION	DATE
1	ADDED COMMENTS	07/13/16

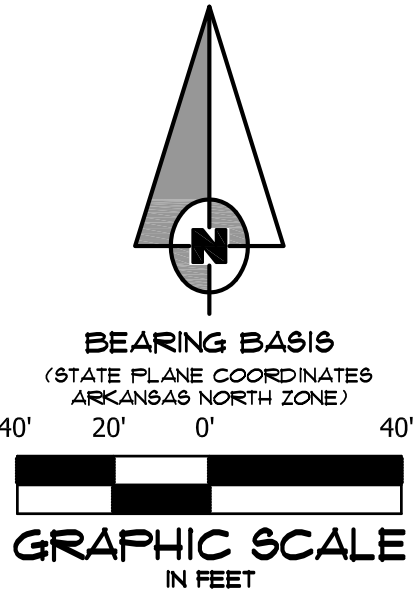
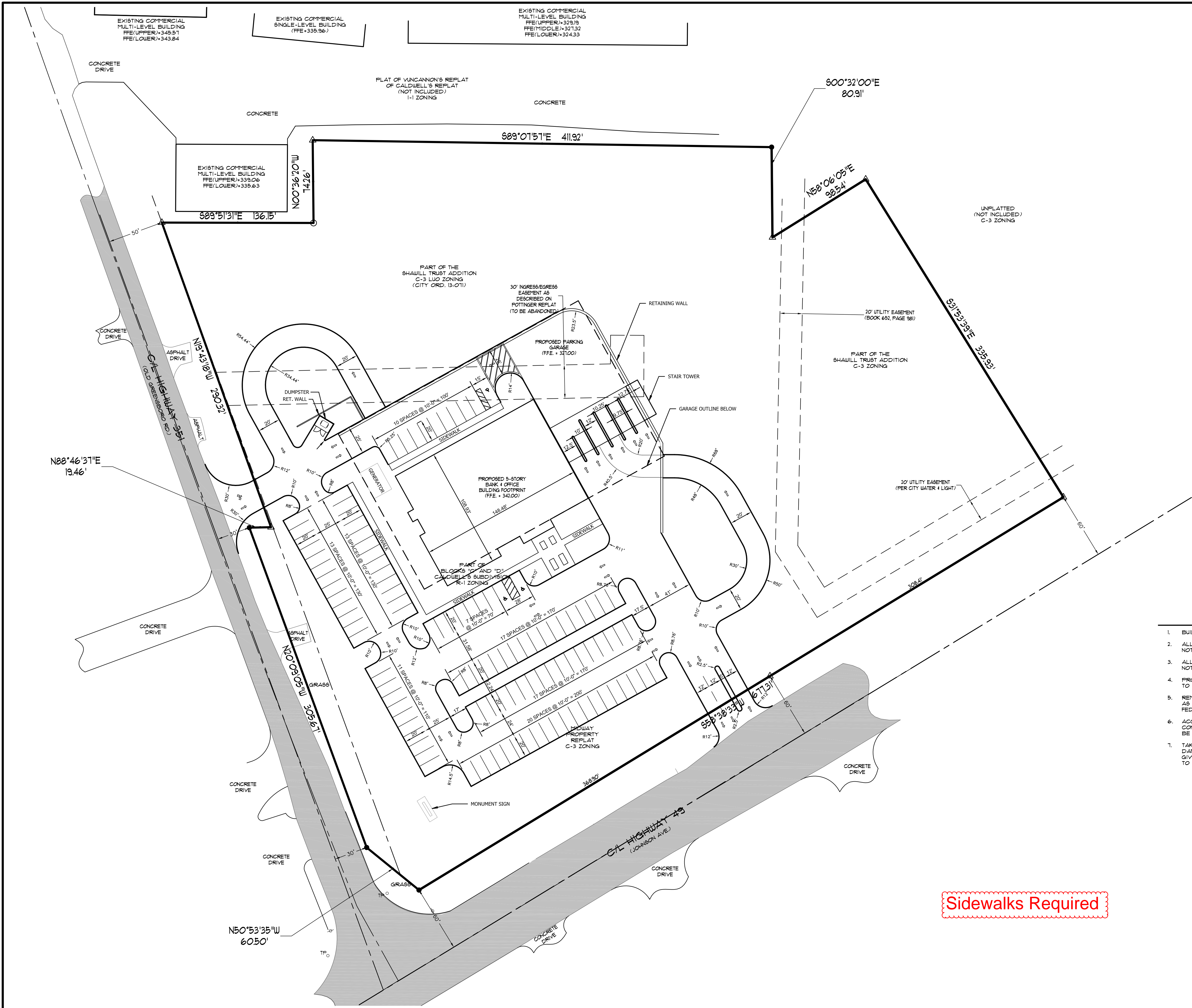
GENERAL NOTES

DATE: 06/27/16	DRAWN: CCH
CADD FILE: 15165-SDP	CHECKED: JME
DWG#: 0414104.000X	SHEET
SCALE: 1" = 40'	C002









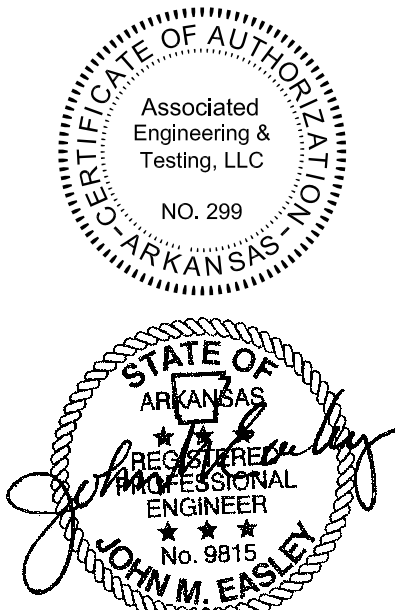
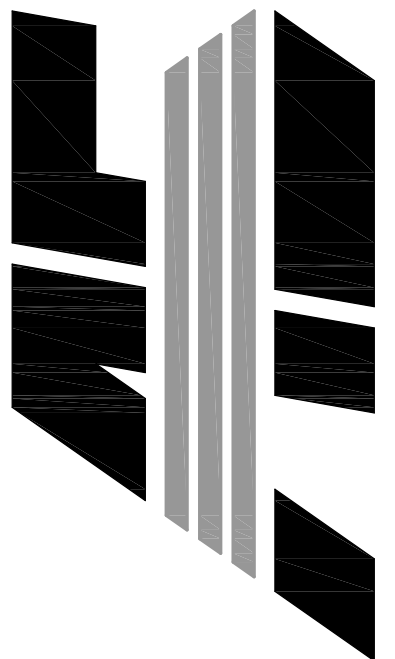
ENGINEER'S NOTES

1. BUILDING LAYOUT BASED ON ARCHITECT PLANS.
2. ALL DIMENSIONS ARE TO THE FACE OF CURB, UNLESS OTHERWISE NOTED.
3. ALL CURB RETURN RADII SHALL BE 5' UNLESS OTHERWISE NOTED.
4. PROJECT SITE IS CURRENTLY BANK FACILITY. EXISTING BANK TO REMAIN IN OPERATION DURING CONSTRUCTION.
5. REMOVE AND DISPOSE OF ALL DEBRIS AND OTHER MATERIAL AS SHOWN IN ACCORDANCE WITH ALL LOCAL, STATE AND/OR FEDERAL REGULATIONS.
6. ACCESS ALONG ROADWAY SHALL BE MAINTAINED AT ALL TIMES. CONSTRUCTION IN CITY, COUNTY OR STATE RIGHT OF WAY SHALL BE COORDINATED WITH THE RESPECTIVE AUTHORITY.
7. TAKE ALL PRECAUTIONS NECESSARY TO AVOID PROPERTY DAMAGE TO ADJACENT PROPERTIES. THE CONTRACTOR SHALL GIVE AFFECTED PROPERTY OWNERS SUFFICIENT NOTICE PRIOR TO CONSTRUCTION OPERATIONS.

Sidewalks Required

FIRST NATIONAL BANK  
3500 EAST JOHNSON AVENUE  
HWY. 49 & HWY. 351  
JONESBORO, ARKANSAS

ASSOCIATED  
ENGINEERING, LLC  
CIVIL ENGINEERING • LAND SURVEYING  
LAND PLANNING  
103 SOUTH CHURCH STREET • P.O. BOX 1462  
JONESBORO, AR 72403  
PH: 870-932-3594 • FAX: 870-935-1263



NO.	DESCRIPTION	DATE
1	ADEQ COMMENTS	07/13/16

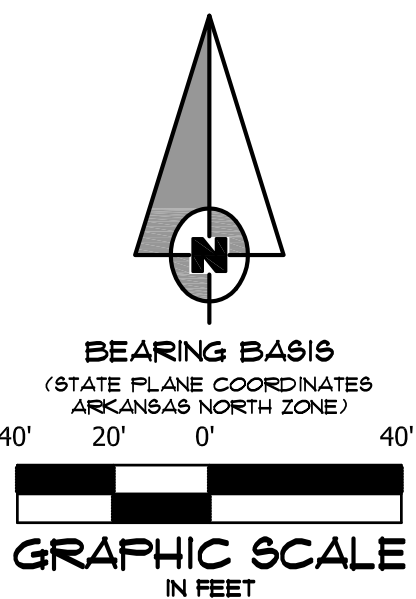
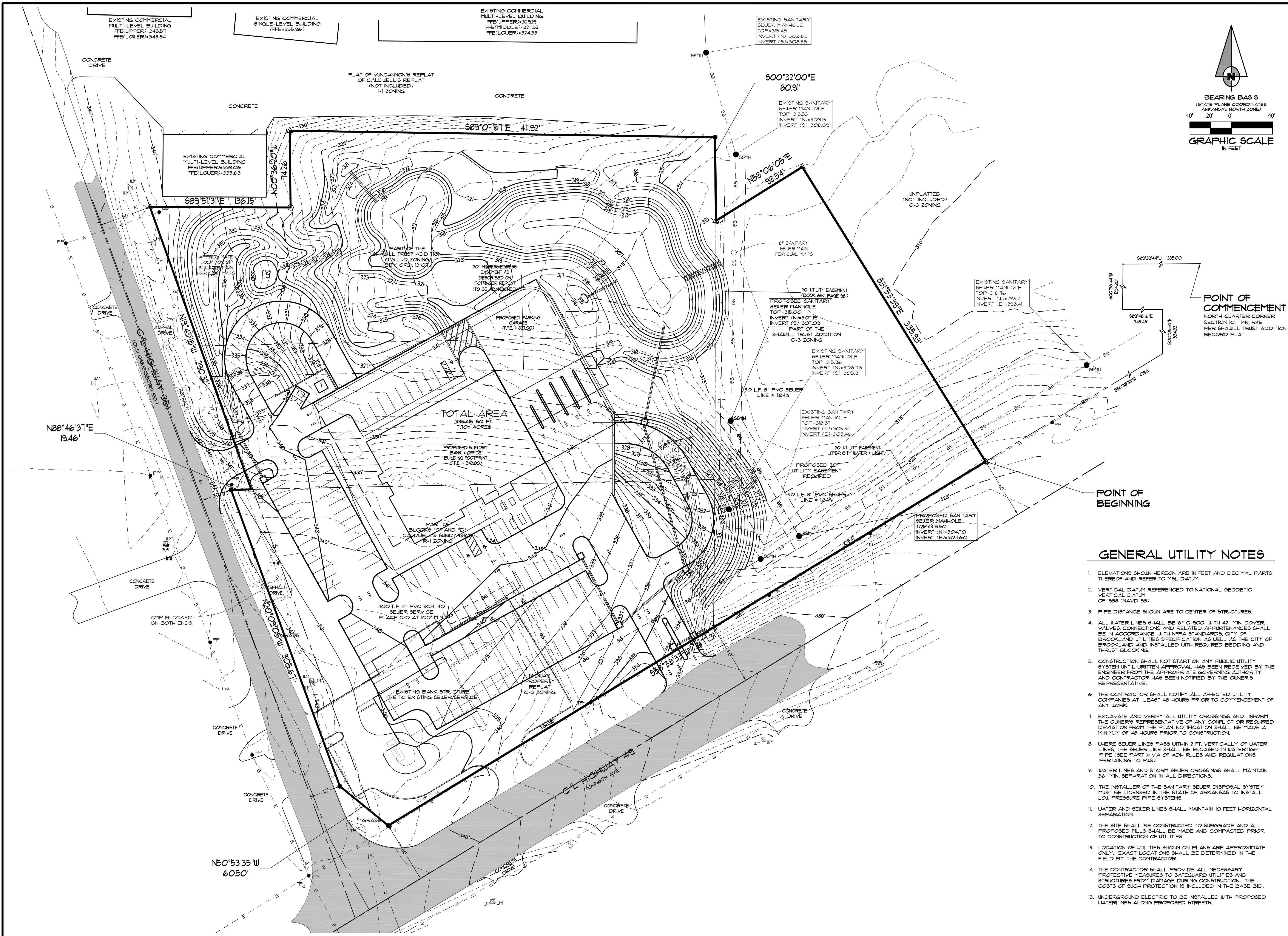
SITE  
PLAN

DATE: 06/27/16	DRAWN: CCH
CADD FILE: 15165-SDP	CHECKED: JME
DWG#: 0414104.000X	SHEET
SCALE: 1" = 40'	C004









POINT OF COMMENCEMENT  
NORTH QUARTER CORNER  
SECTION 10, T4N, R4E  
PER SHAULL TRUST ADDITION  
RECORD PLAT

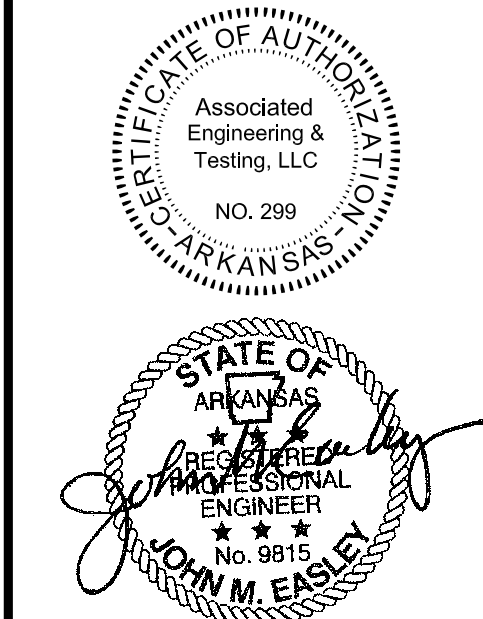
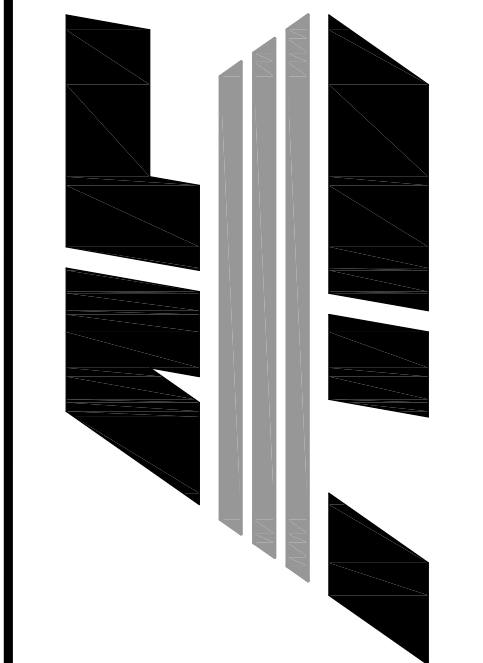
POINT OF BEGINNING

GENERAL UTILITY NOTES

- 1. ELEVATIONS SHOWN HEREON ARE IN FEET AND DECIMAL PARTS THEREOF AND REFER TO MSL DATUM.
- 2. VERTICAL DATUM REFERENCED TO NATIONAL GEODETIC VERTICAL DATUM OF 1988 (NAVD 88).
- 3. PIPE DISTANCE SHOWN ARE TO CENTER OF STRUCTURES.
- 4. ALL WATER LINES SHALL BE 6" C-900 WITH 42" MIN. COVER. VALVES, CONNECTIONS AND RELATED APPURTENANCES SHALL BE IN ACCORDANCE WITH NFPA STANDARDS, CITY OF BROOKLAND AND UTILITIES SPECIFICATION AS WELL AS THE CITY OF BROOKLAND AND INSTALLED WITH REQUIRED BEDDING AND THRUST BLOCKING.
- 5. CONSTRUCTION SHALL NOT START ON ANY PUBLIC UTILITY SYSTEM UNTIL WRITTEN APPROVAL HAS BEEN RECEIVED BY THE ENGINEER FROM THE APPROPRIATE GOVERNING AUTHORITY AND CONTRACTOR HAS BEEN NOTIFIED BY THE OWNER'S REPRESENTATIVE.
- 6. THE CONTRACTOR SHALL NOTIFY ALL AFFECTED UTILITY COMPANIES AT LEAST 48 HOURS PRIOR TO COMMENCEMENT OF ANY WORK.
- 7. EXCAVATE AND VERIFY ALL UTILITY CROSSINGS AND INFORM THE OWNER'S REPRESENTATIVE OF ANY CONFLICT OR REQUIRED DEVIATION FROM THE PLAN. NOTIFICATION SHALL BE MADE A MINIMUM OF 48 HOURS PRIOR TO CONSTRUCTION.
- 8. WHERE SEWER LINES PASS WITHIN 2 FT. VERTICALLY OF WATER LINES, THE SEWER LINE SHALL BE ENCASED IN WATER-TIGHT PIPE (SEE PART XIV.A OF ADH RULES AND REGULATIONS PERTAINING TO PUB).
- 9. WATER LINES AND STORM SEWER CROSSINGS SHALL MAINTAIN 36" MIN. SEPARATION IN ALL DIRECTIONS.
- 10. THE INSTALLER OF THE SANITARY SEWER DISPOSAL SYSTEM MUST BE LICENSED IN THE STATE OF ARKANSAS TO INSTALL LOW PRESSURE PIPE SYSTEMS.
- 11. WATER AND SEWER LINES SHALL MAINTAIN 10 FEET HORIZONTAL SEPARATION.
- 12. THE SITE SHALL BE CONSTRUCTED TO SUBGRADE AND ALL PROPOSED FILLS SHALL BE MADE AND COMPACTED PRIOR TO CONSTRUCTION OF UTILITIES.
- 13. LOCATION OF UTILITIES SHOWN ON PLANS ARE APPROXIMATE ONLY. EXACT LOCATIONS SHALL BE DETERMINED IN THE FIELD BY THE CONTRACTOR.
- 14. THE CONTRACTOR SHALL PROVIDE ALL NECESSARY PROTECTIVE MEASURES TO SAFEGUARD UTILITIES AND STRUCTURES FROM DAMAGE DURING CONSTRUCTION. THE COSTS OF SUCH PROTECTION IS INCLUDED IN THE BASE BID.
- 15. UNDERGROUND ELECTRIC TO BE INSTALLED WITH PROPOSED WATER LINES ALONG PROPOSED STREETS.

FIRST NATIONAL BANK  
3500 EAST JOHNSON AVENUE  
Hwy. 49 & Hwy. 351  
JONESBORO, ARKANSAS

ASSOCIATED  
ENGINEERING, LLC  
CIVIL ENGINEERING • LAND SURVEYING  
LAND PLANNING  
103 SOUTH CHURCH STREET • P.O. BOX 1462  
JONESBORO, AR 72403  
PH: 870-932-3594 • FAX: 870-935-1263



NO.	DESCRIPTION	DATE
1	ADEQ COMMENTS	07/19/16

UTILITY PLAN	
DATE: 06/27/16	DRAWN: CCH
CADD FILE: 15165-SDP	CHECKED: JME
DWG#: 0414104.000X	SHEET
SCALE: 1" = 40'	C006

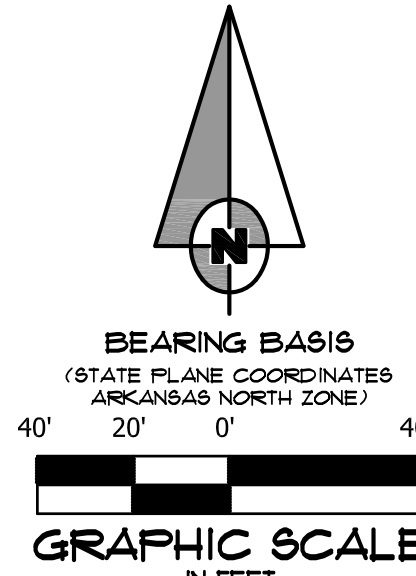
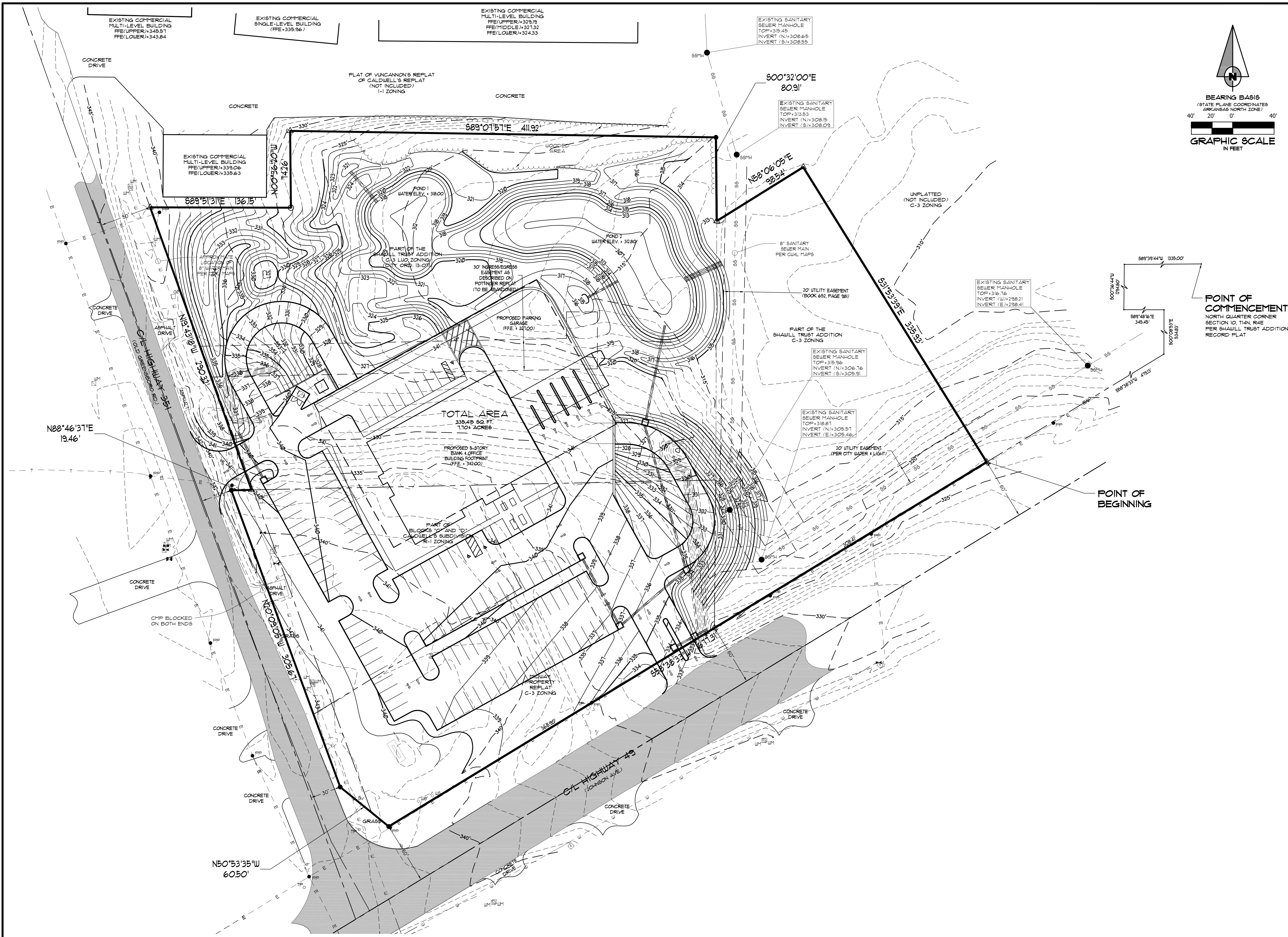






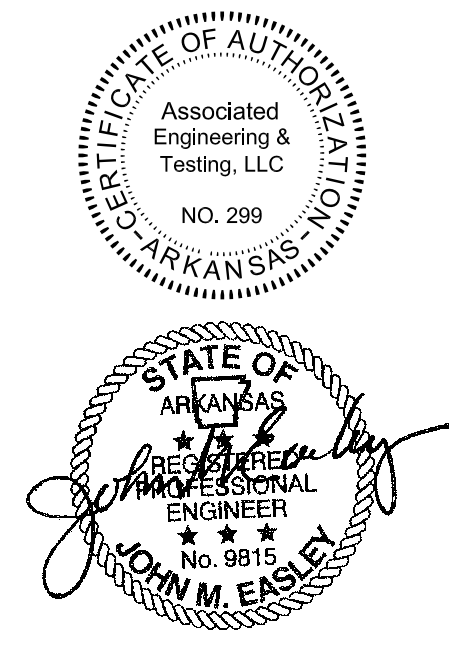
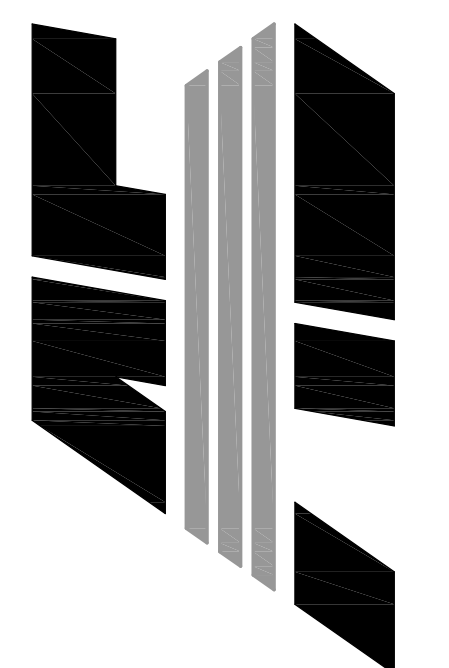






FIRST NATIONAL BANK  
3500 EAST JOHNSON AVENUE  
HWY. 49 & HWY. 351  
JONESBORO, ARKANSAS

ASSOCIATED  
ENGINEERING, LLC  
CIVIL ENGINEERING • LAND SURVEYING  
LAND PLANNING  
103 SOUTH CHURCH STREET • P.O. BOX 1462  
JONESBORO, AR 72403  
PH: 870-932-3594 • FAX: 870-935-1263

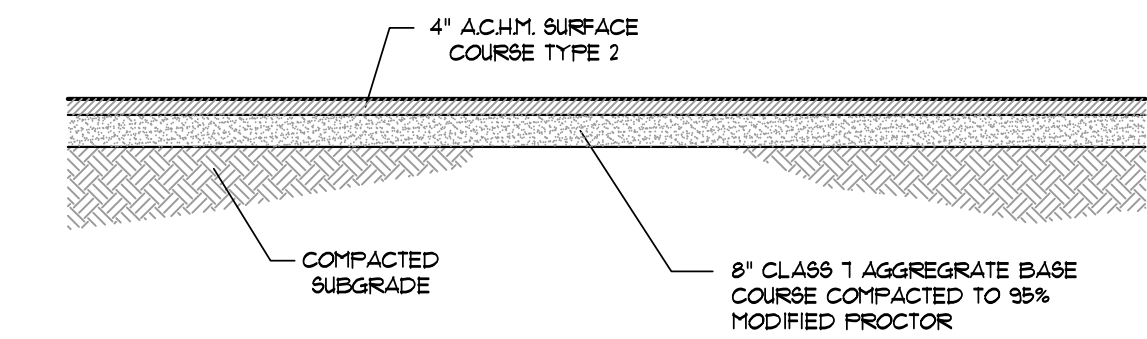


NO.	DESCRIPTION	DATE
1	ADEQ COMMENTS	07/13/16

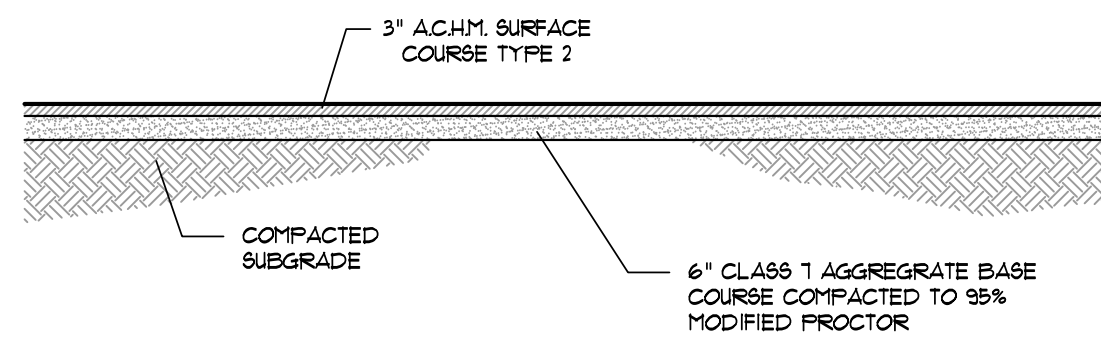
LANDSCAPE  
PLAN

DATE: 06/27/16	DRAWN: CCH
CADD FILE: 15165-SDP	CHECKED: JME
DWG#: 0414104.000X	SHEET
SCALE: 1" = 40'	C009

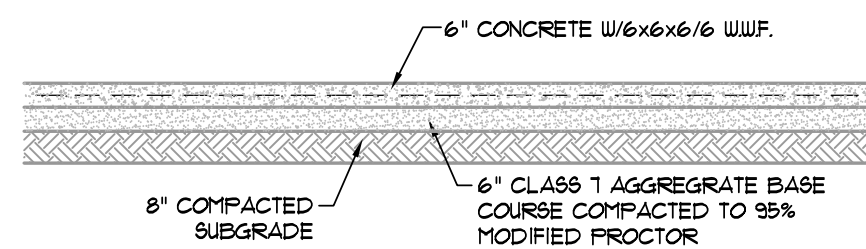




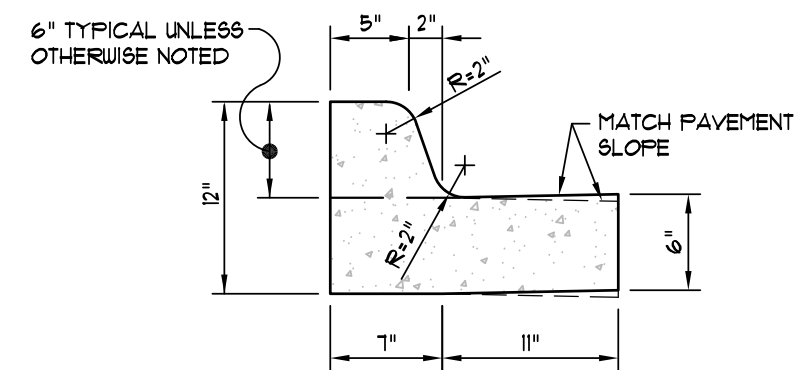
SECTION - ASPHALT PARKING - HEAVY  
N.T.S.



SECTION - ASPHALT PARKING - LIGHT  
N.T.S.

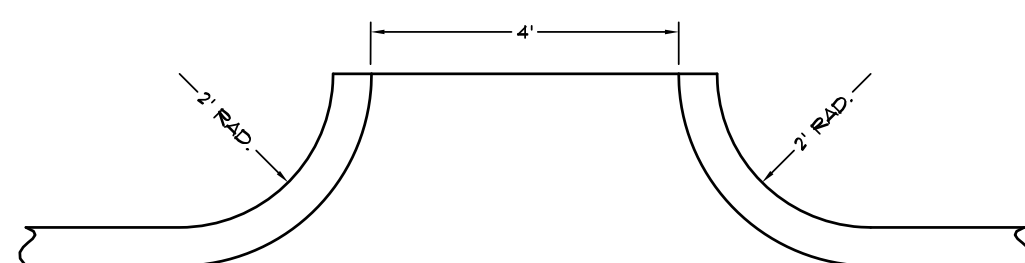


SECTION - CONCRETE PAVING - LIGHT  
N.T.S.

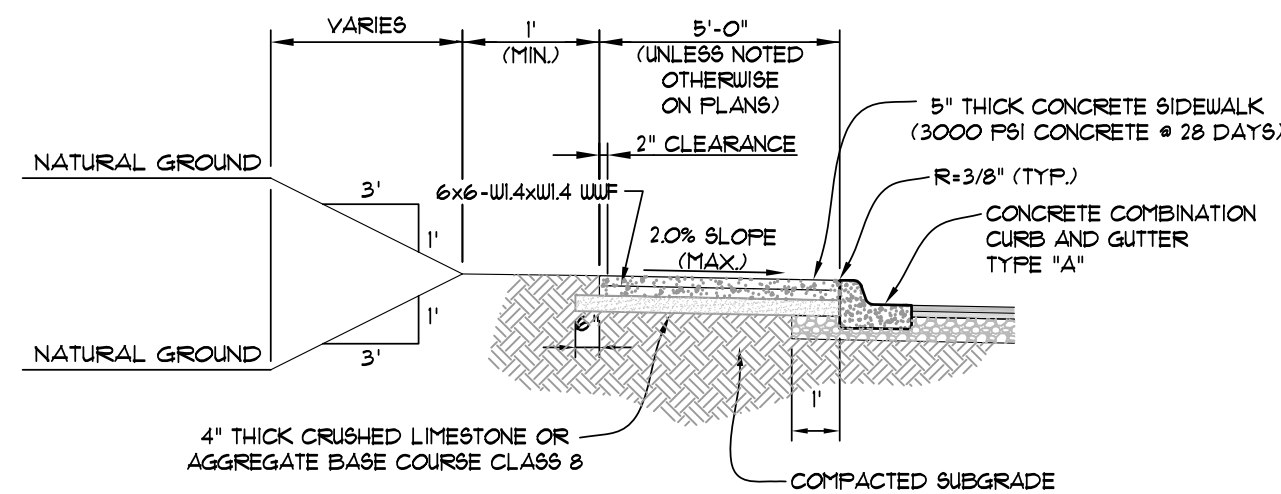


NOTE: CONTRACTION AND EXPANSION JOINTS SHALL BE CONSTRUCTED IN ACCORDANCE WITH THE PLANS AND SPECIFICATIONS.

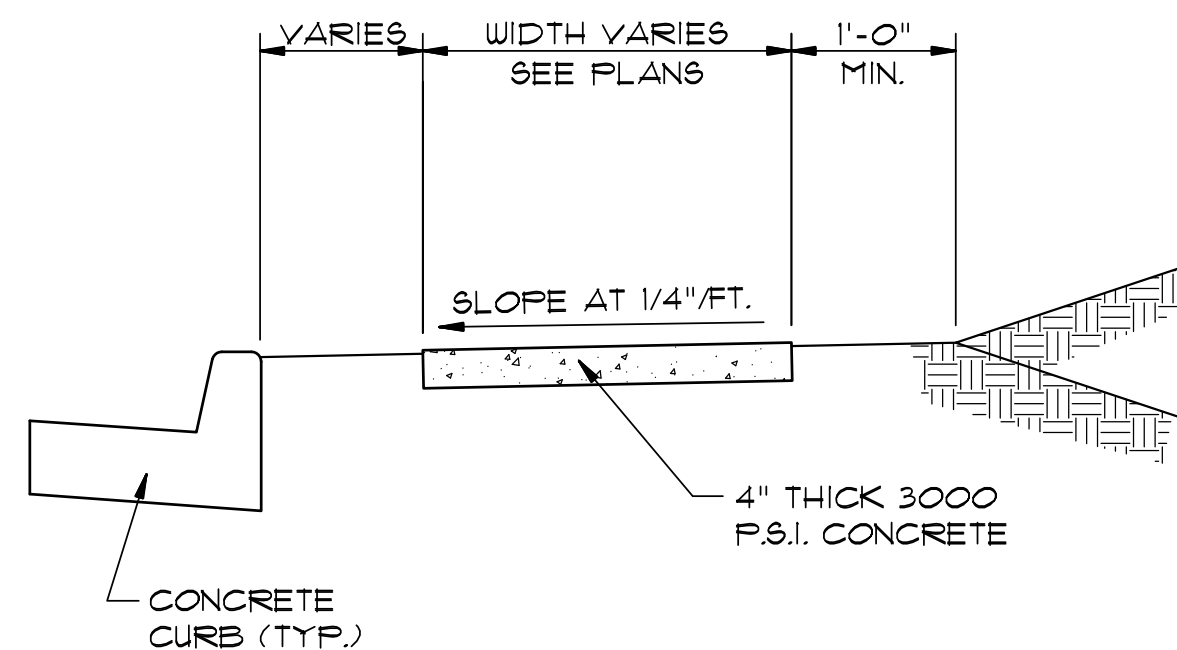
TYPICAL CURB & GUTTER  
TYPE "A-18"  
(NOT TO SCALE)



CURB CHANNEL  
(NOT TO SCALE)

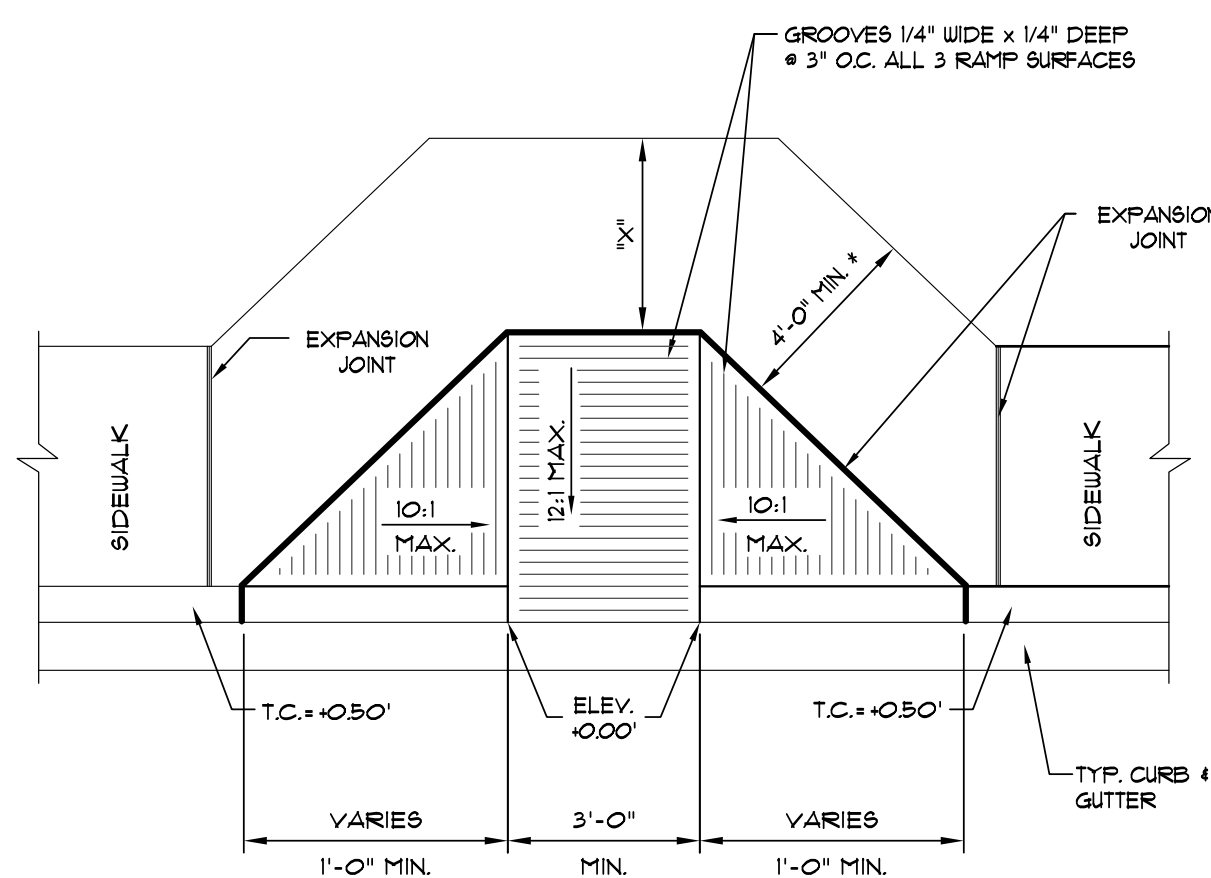


TYPICAL SECTION - SIDEWALK AT CURB  
(NOT TO SCALE)



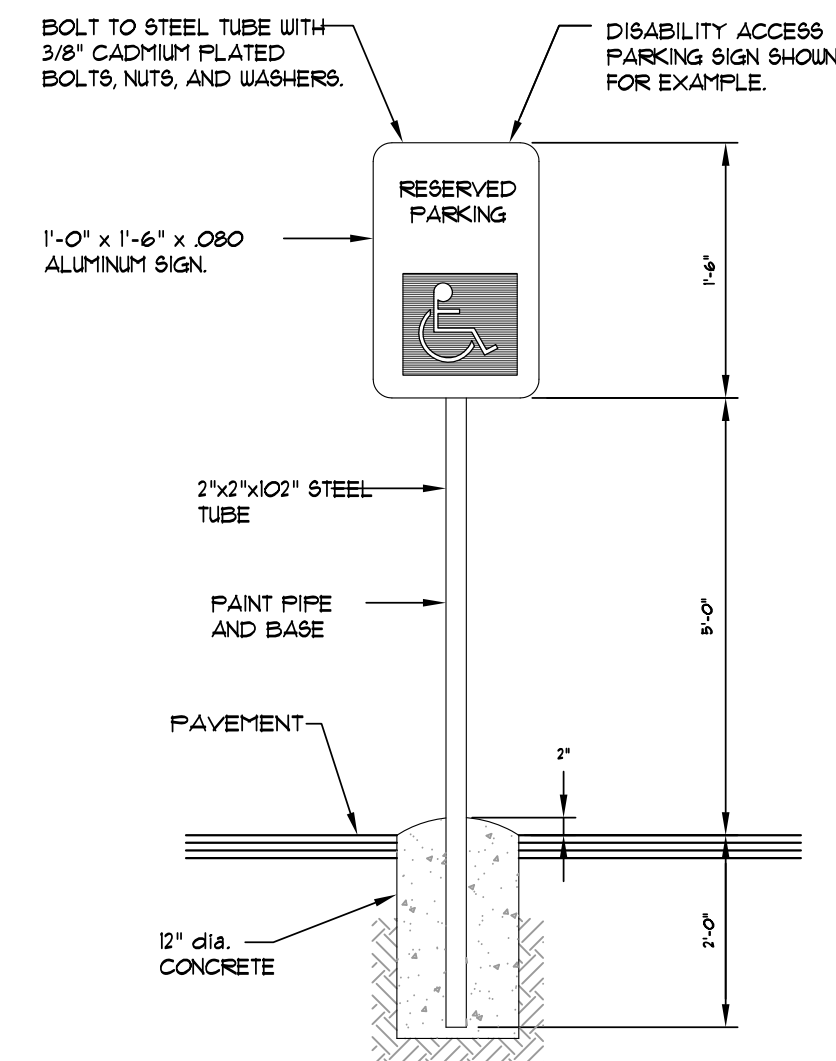
TYPICAL SECTION - SIDEWALK  
N.T.S.

\* MINIMUM WIDTH FOR SIDEWALK ADJACENT TO CURB IS 5' FOR CITY STREETS AND 6' FOR STATE OR U.S. HIGHWAYS.



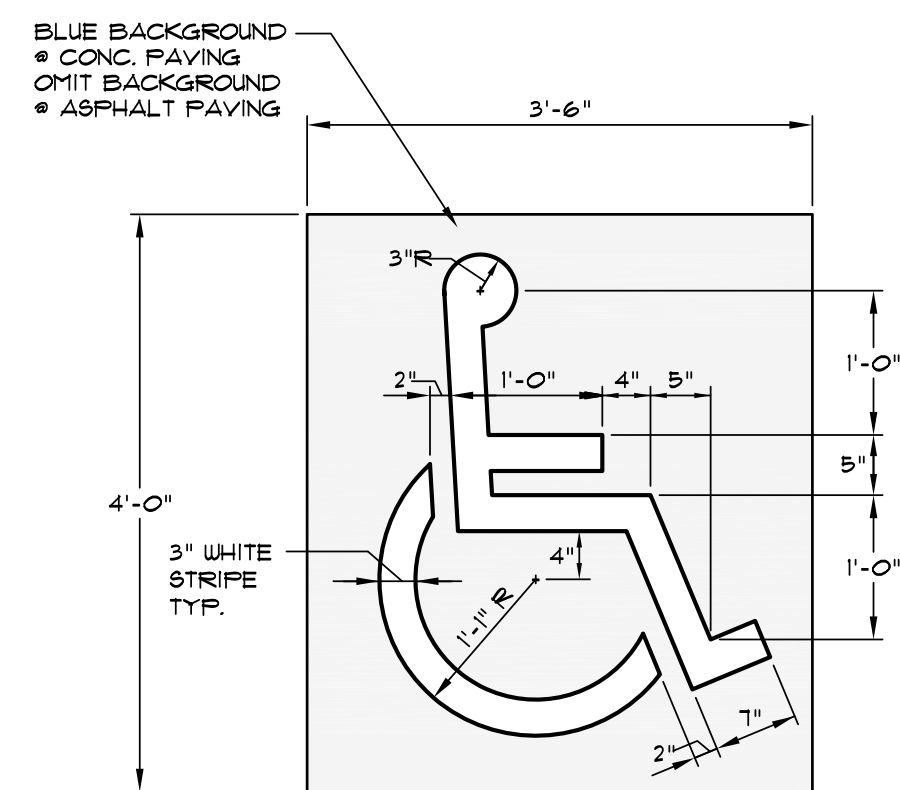
\* NOTE: IF "X" IS LESS THAN 48", AS APPROVED BY THE CITY, THEN THE SLOPE OF THE FLARED SIDE SHALL NOT EXCEED 12:1.

TYPE "A" ACCESS RAMP  
SCALE: 1/4" = 1'-0"



NOTE: ALL SIGNS SHALL CONFORM TO MUTCD AND SHALL BE HIGH INTENSITY.

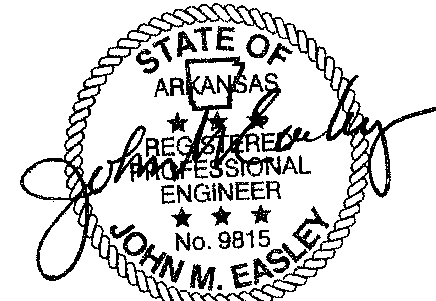
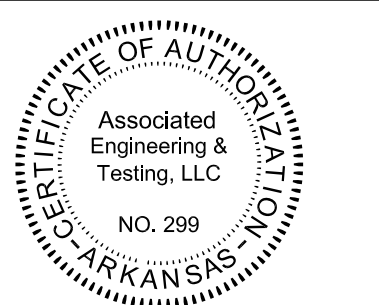
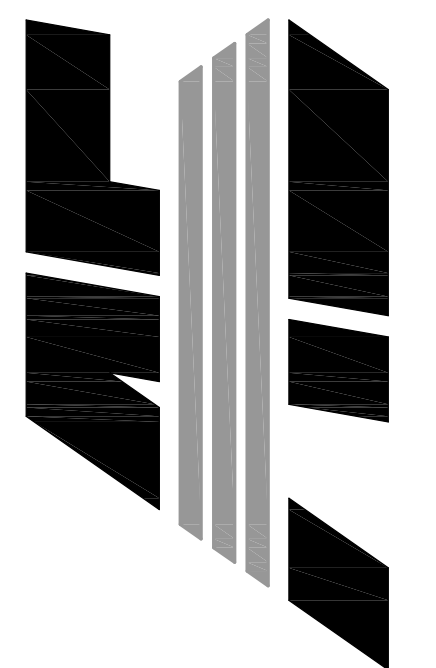
SIGN DETAIL  
SCALE: 1/2" = 1'-0"



PARKING STALL SYMBOL  
SCALE: 3/4" = 1'-0"

FIRST NATIONAL BANK  
3500 EAST JOHNSON AVENUE  
HWY. 49 & HWY. 351  
JONESBORO, ARKANSAS

ASSOCIATED  
ENGINEERING, LLC  
CIVIL ENGINEERING • LAND SURVEYING  
LAND PLANNING  
103 SOUTH CHURCH STREET • P.O. BOX 1462  
JONESBORO, AR 72403  
PH: 870-932-3594 • FAX: 870-935-1263

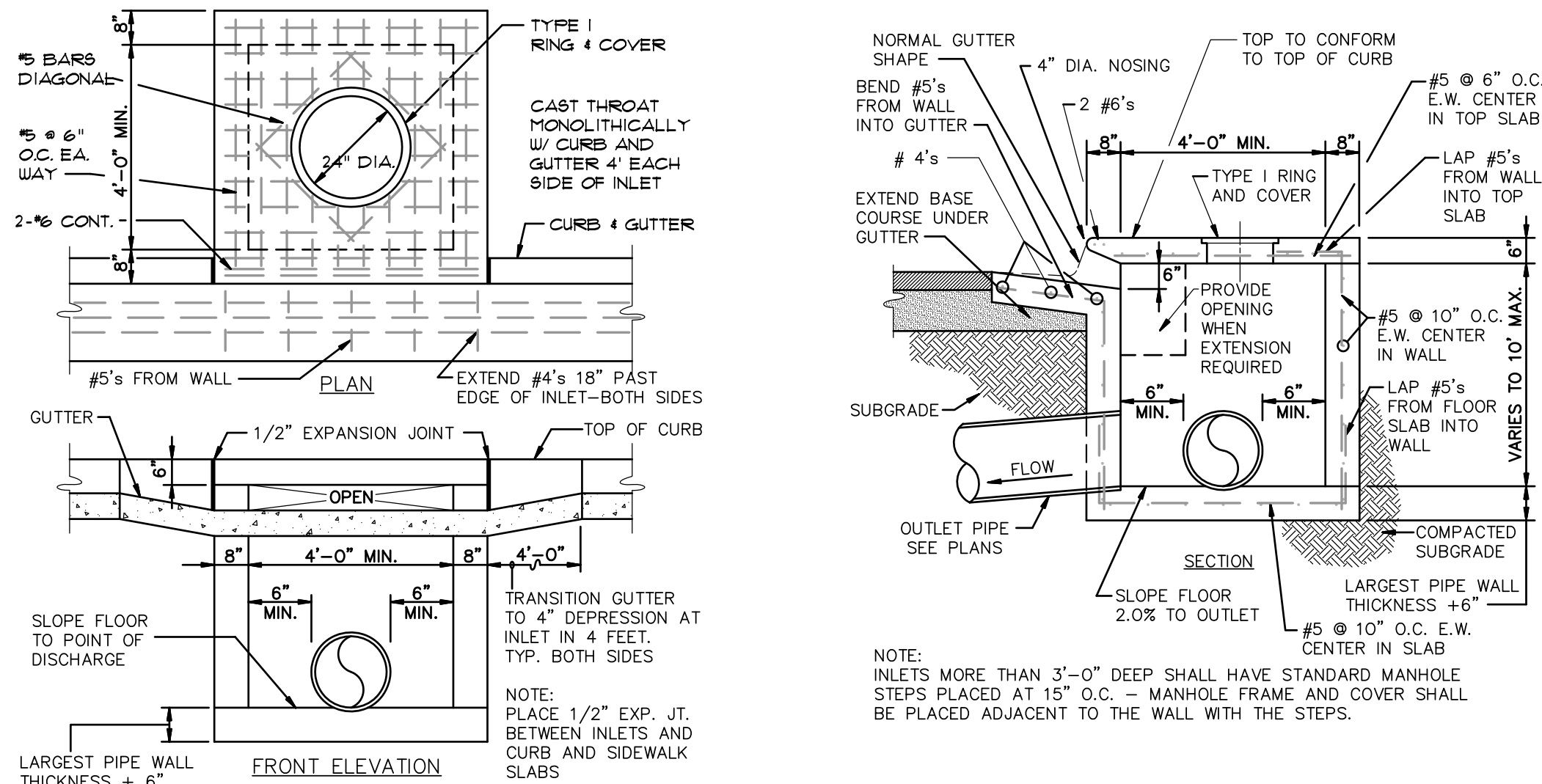


NO.	DESCRIPTION	DATE
1	ADEQ COMMENTS	07/13/16

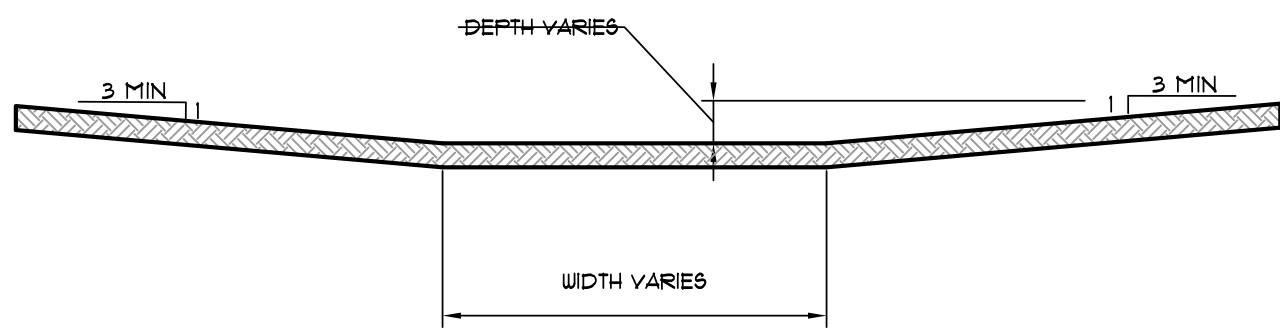
STANDARD  
DETAILS

DATE:	06/27/16	DRAWN:	COH
CADD FILE:	15165-SDP	CHECKED:	JME
DWG#:	0414104.000X	SHEET	
SCALE:	1" = 40'	C010	





**CURB INLET - TYPE "A"**  
(NOT TO SCALE)



**DETAIL - DRAINAGE SWALE - FLAT BOTTOM**  
NTS.

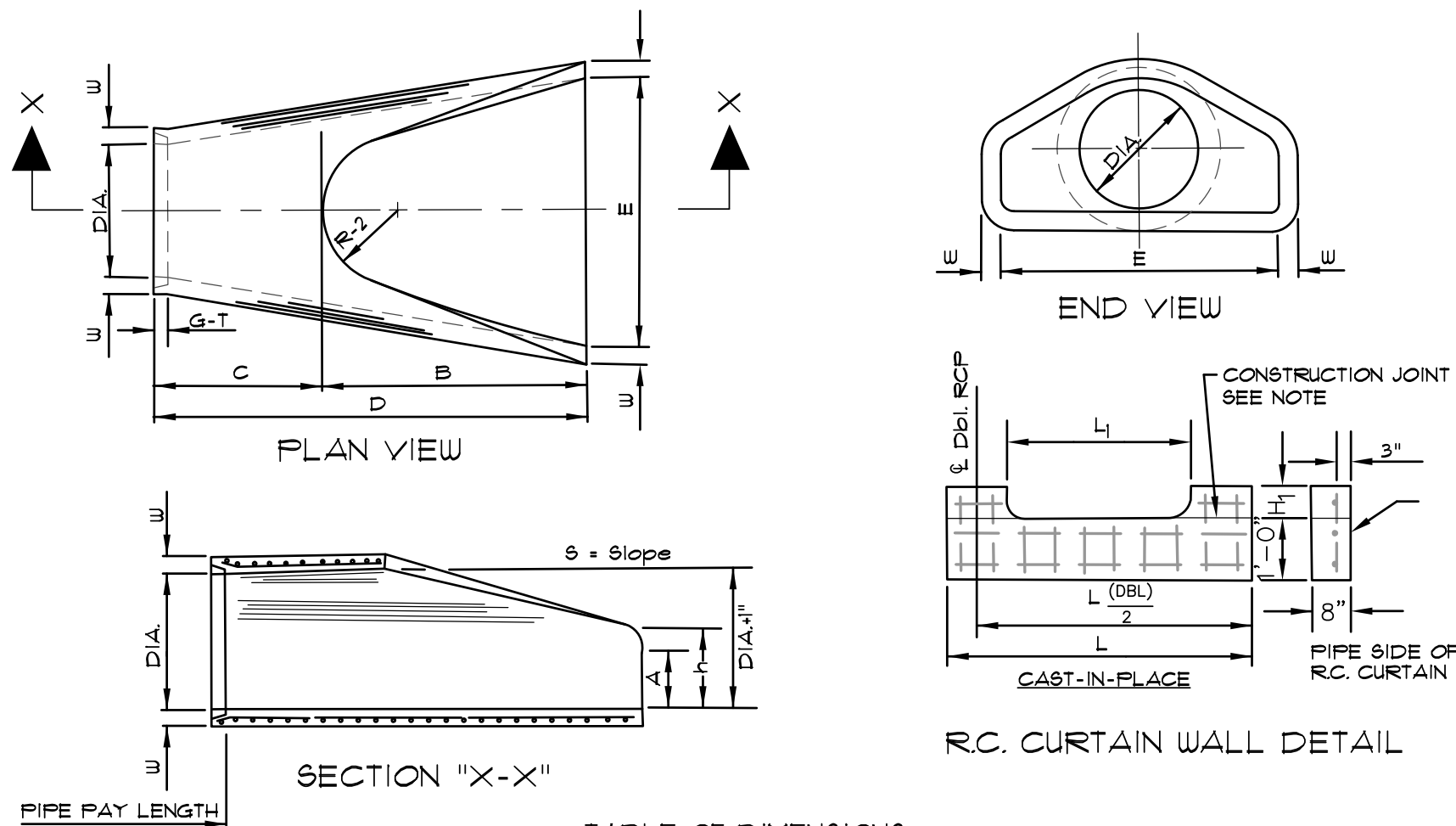


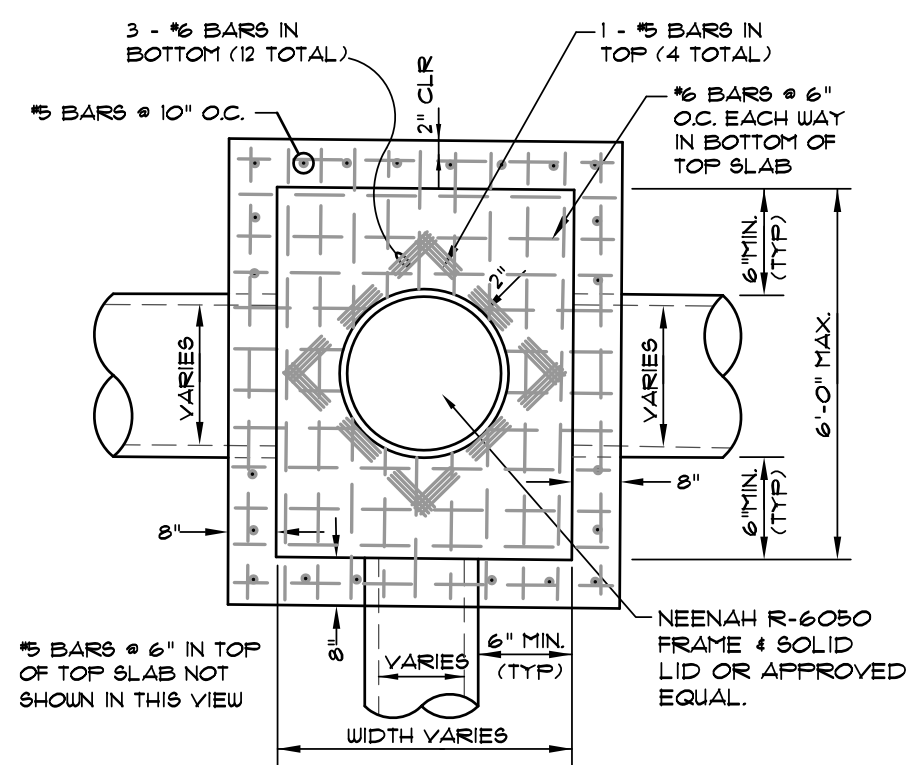
TABLE OF DIMENSIONS

DIA.	WALL	A	B	C	D	E	S	DIA. ±1"	P	R-1	R-2	G-T	WT	h
18"	2 1/2"	9"	2'-3"	3'-10"	6'-1"	3'-0"	3:1	19"	29"	15 1/2"	12"	2"	1000	1'-0 1/2"
24"	3"	9 1/2"	3'-7 1/2"	2'-6"	6'-1 1/2"	4'-0"	3:1	25"	33 3/16"	16 13/16"	14"	2 1/2"	1800	1'-1 1/2"
30"	3 1/2"	1'-0"	4'-6"	1'-7 3/4"	6'-1 3/4"	5'-0"	3:1	31"	37"	18 1/2"	15"	3 1/4"	1940	1'-4 5/8"
36"	4"	1'-3"	5'-3"	2'-10 3/4"	6'-0"	5'-0"	3:1	37"	47 13/16"	24 5/16"	20"	3 1/2"	4100	1'-8"
42"	4 1/2"	1'-9"	5'-3"	2'-11"	6'-2"	5'-0"	3:1	43"	53 7/8"	27 1/2"	22"	3 1/2"	5380	2'-2 1/2"
48"	5"	2'-0"	6'-0"	2'-2"	6'-2"	7'-0"	3:1	49"	56 1/2"	28 1/2"	22"	3 1/2"	6550	2'-6"
54"	5 1/2"	2'-4"	6'-8"	1'-10"	6'-4"	7'-8"	3:1	55"	65 1/2"	33 1/8"	24"	4"	8750	2'-10 1/2"
60"	6"	2'-10"	6'-6"	1'-10"	6'-4"	8'-0"	3:1	61"	72 1/2"	36 11/16"	24"	4"	9270	3'-5"
72"	7"	3'-10"	6'-6"	1'-10"	6'-4"	9'-0"	3:1	73"	77 13/16"	38 15/16"	24"	5"	13250	4'-6"

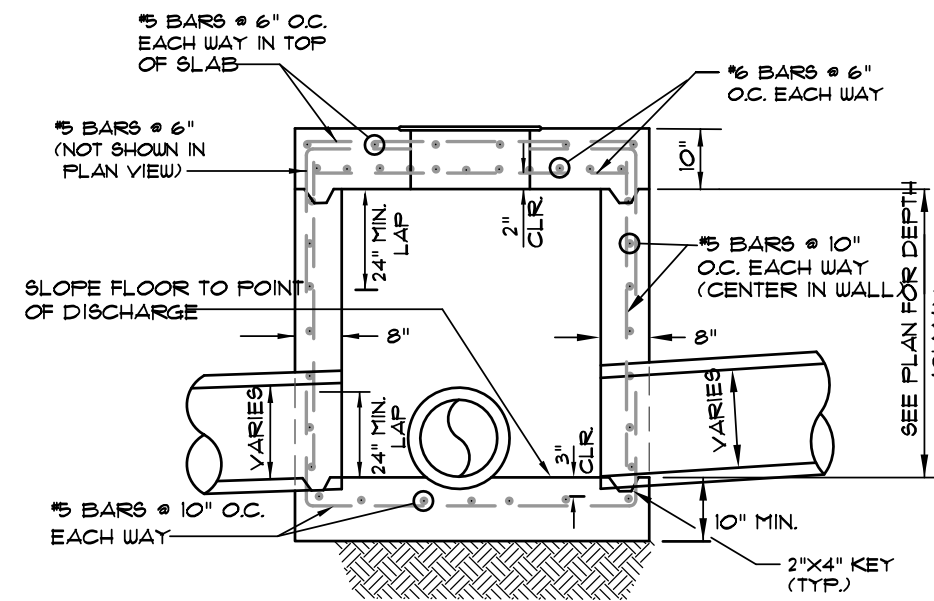
**NOTES:**

- THE PORTION OF THE R.C. CURTAIN WALL BENEATH THE FLARED END SECTION (LOWER 1'-0") SHALL BE PLACED MONOLITHICALLY. THE FLARED END SECTION SHALL THEN BE SET IN PLACE AND THE REMAINING PORTIONS OF THE R.C. CURTAIN WALL PLACED.
- ALL REINFORCING STEEL ARE #4 BARS AT 6" O.C.
- NO SEPARATE PAYMENT WILL BE MADE FOR THE CURTAIN WALLS. THEY SHALL BE CONSIDERED SUBSIDIARY TO THE FLARED END SECTIONS.
- TONGUE END ON UPSTREAM SECTION. GROOVE END ON DOWNSTREAM SECTION.

**FLARED END SECTION DETAILS FOR REINFORCED CONCRETE PIPE CULVERT**  
(NOT TO SCALE)



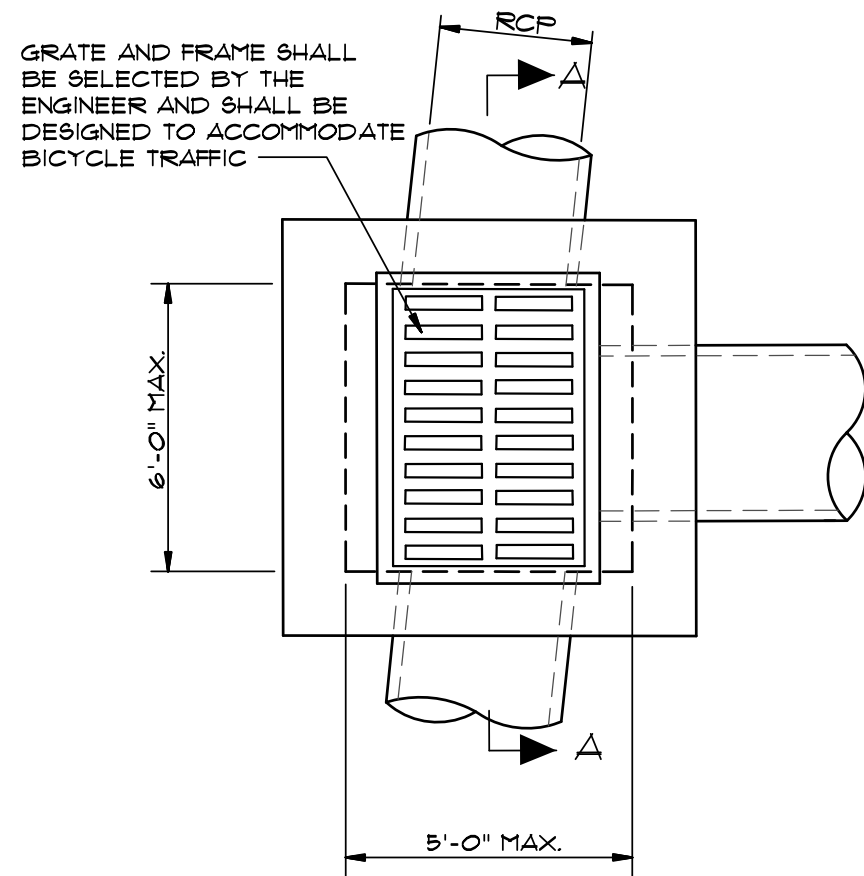
**PLAN - JUNCTION BOX - HEAVY**  
NTS.



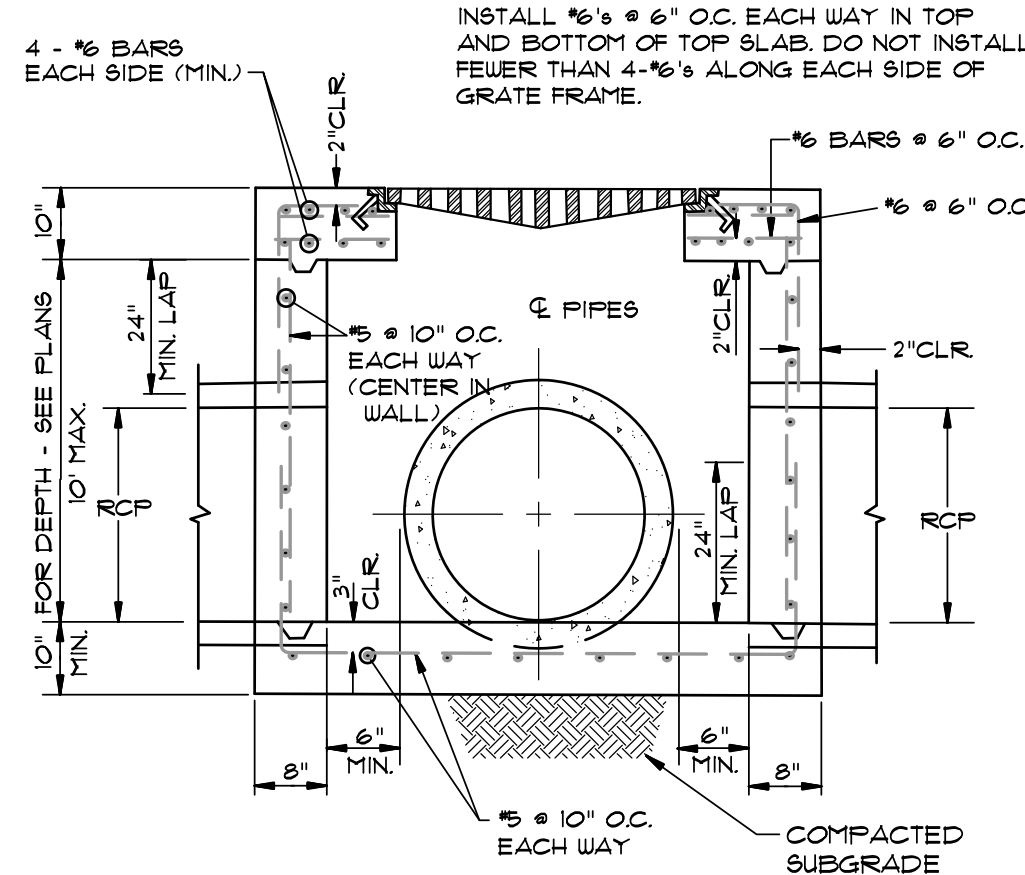
**SECTION - JUNCTION BOX - HEAVY**  
NTS.

**NOTES:**

- SHOULD BE USED TO ACCOMMODATE VEHICULAR TRAFFIC.
- JUNCTION BOXES MORE THAN 3 FEET DEEP SHALL HAVE STANDARD MANHOLE STEPS PLACED @ 15" O.C.
- SEE REINFORCING DETAIL FOR OPENING IN WALL OR SLAB.



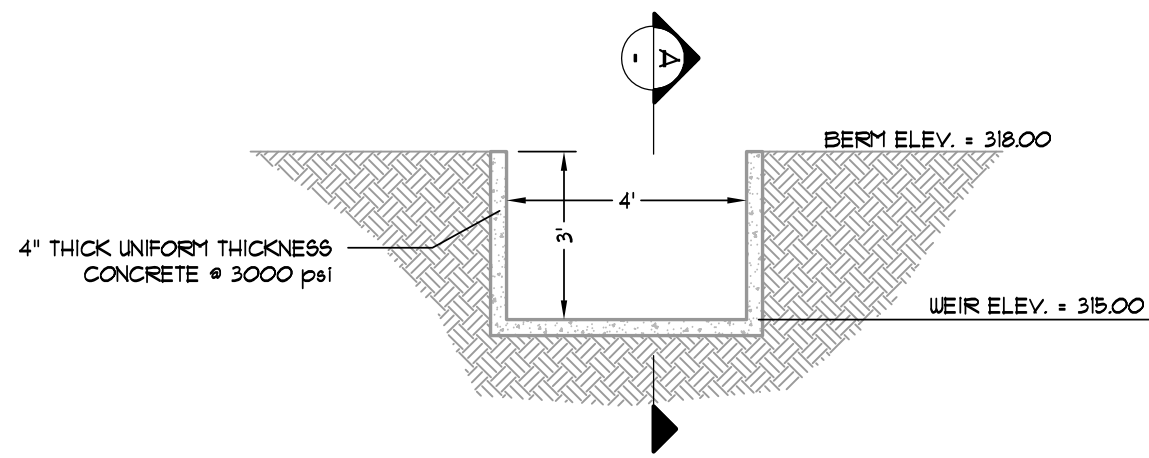
**PLAN - GRATE INLET - HEAVY**  
NTS.



**SECTION "A-A" - GRATE INLET - HEAVY**  
NTS.

**NOTES:**

- SHOULD BE USED TO ACCOMMODATE VEHICULAR TRAFFIC.
- JUNCTION BOXES MORE THAN 3 FEET DEEP SHALL HAVE STANDARD MANHOLE STEPS PLACED @ 15" O.C.
- SEE REINFORCING DETAIL FOR OPENING IN WALL OR SLAB.

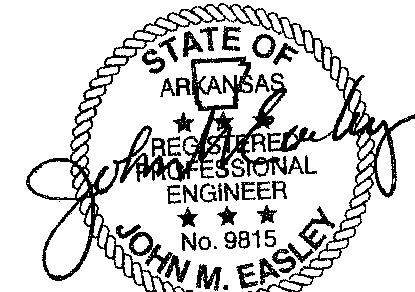
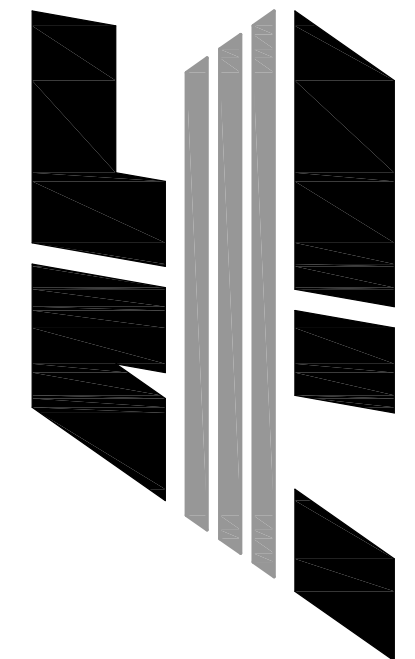


**SECTION "A-A"**

**BROAD CRESTED WEIR DETAIL**  
**DETENTION BASIN**  
(NOT TO SCALE)

**FIRST NATIONAL BANK**  
3500 EAST JOHNSON AVENUE  
HWT. 49 & HWT. 351  
JONESBORO, ARKANSAS

**ASSOCIATED ENGINEERING, LLC**  
CIVIL ENGINEERING • LAND SURVEYING  
LAND PLANNING  
103 SOUTH CHURCH STREET • P.O. BOX 1462  
JONESBORO, AR 72403  
PH: 870-932-3594 • FAX: 870-935-1263

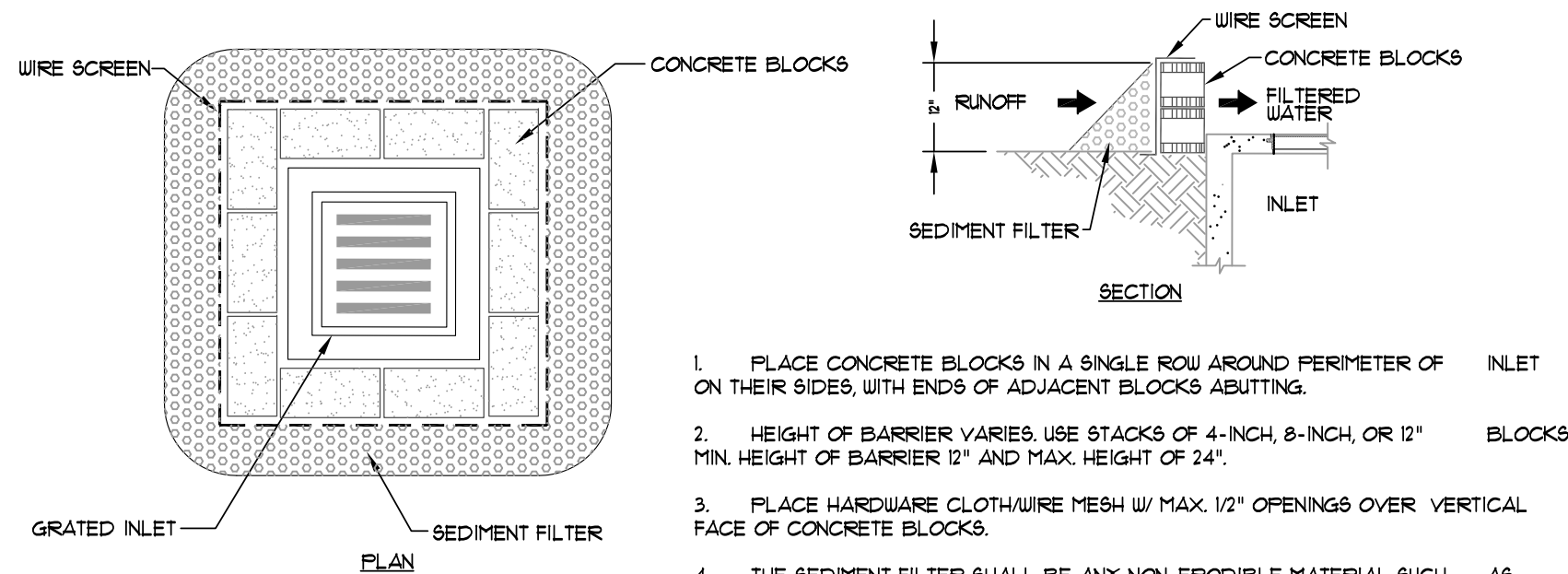
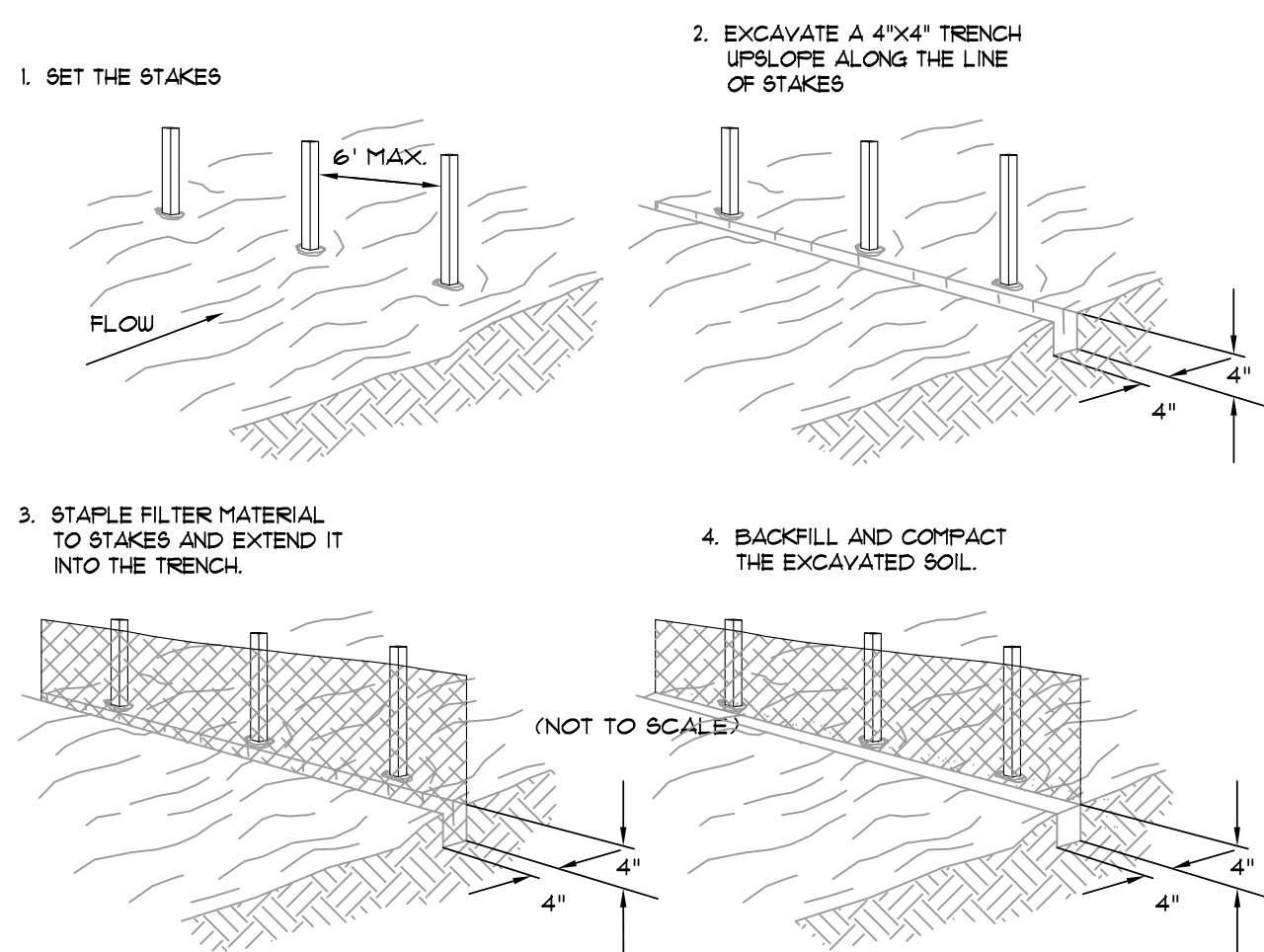


NO.	DESCRIPTION	DATE
1	ADEQ COMMENTS	07/13/16

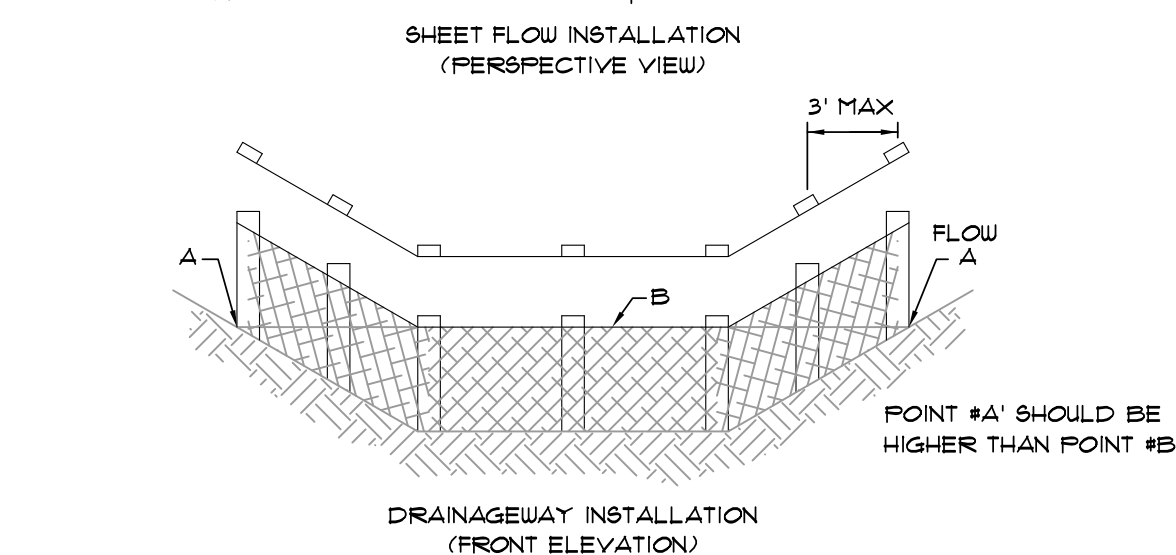
**STANDARD DETAILS**

DATE: 06/27/16	DRAWN: COH
CADD FILE: 15165-SDP	CHECKED: JME
DWG#: 0414104.000X	SHEET
SCALE: 1" = 40'	C011

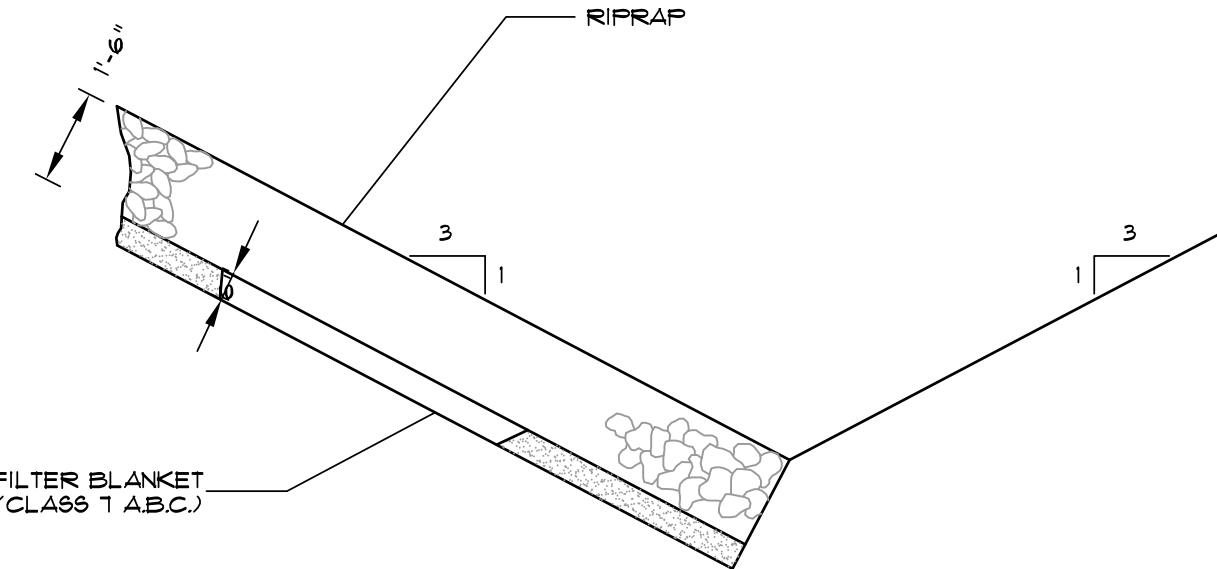




**BLOCK AND AGGREGATE INLET SEDIMENT FILTER**  
SCALE: 1/2" = 1'-0"

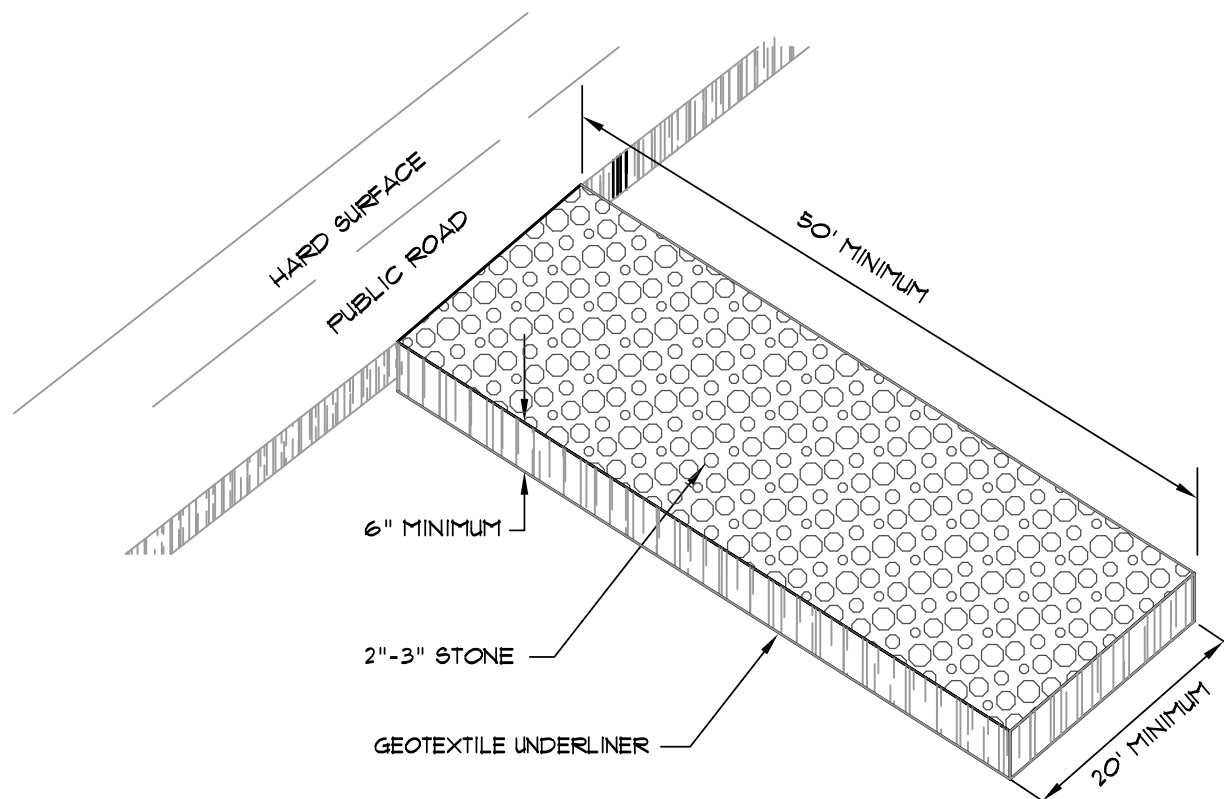


**FILTER BARRIER**  
SCALE: 1/4" = 1'-0"

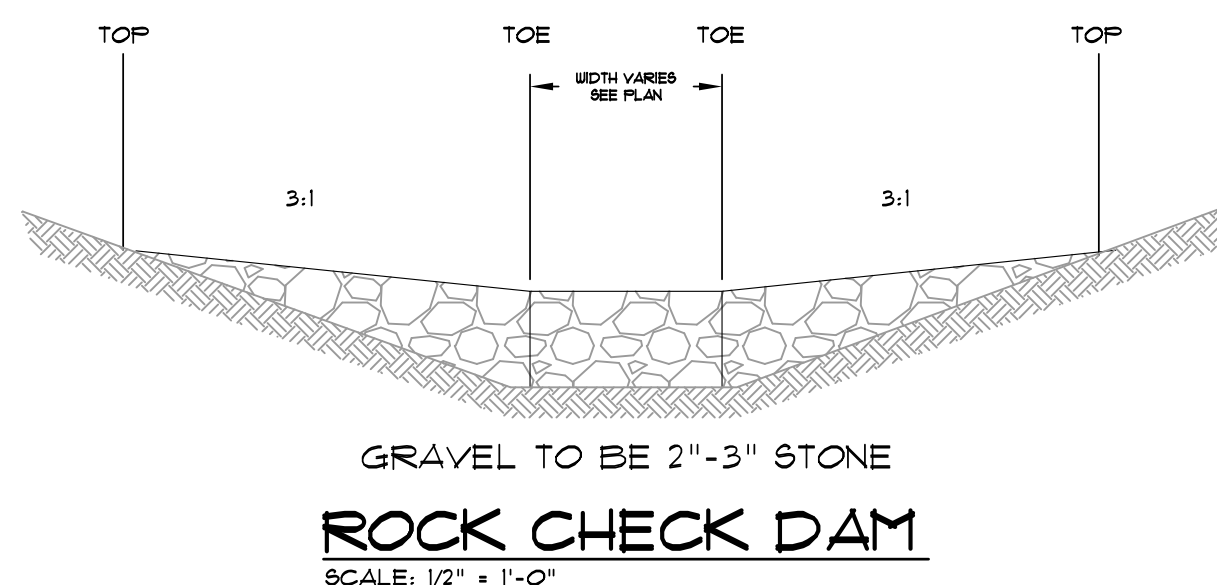


NOTE: IN LIEU OF AN AGGREGATE FILTER BLANKET, A SYNTHETIC FIBER GEOTEXTILE FABRIC MEETING THE REQUIREMENTS OF AASHTO M288 MAY BE USED. IN LIEU OF RIPRAP, AN EROSION CONTROL MAT MAY BE USED.

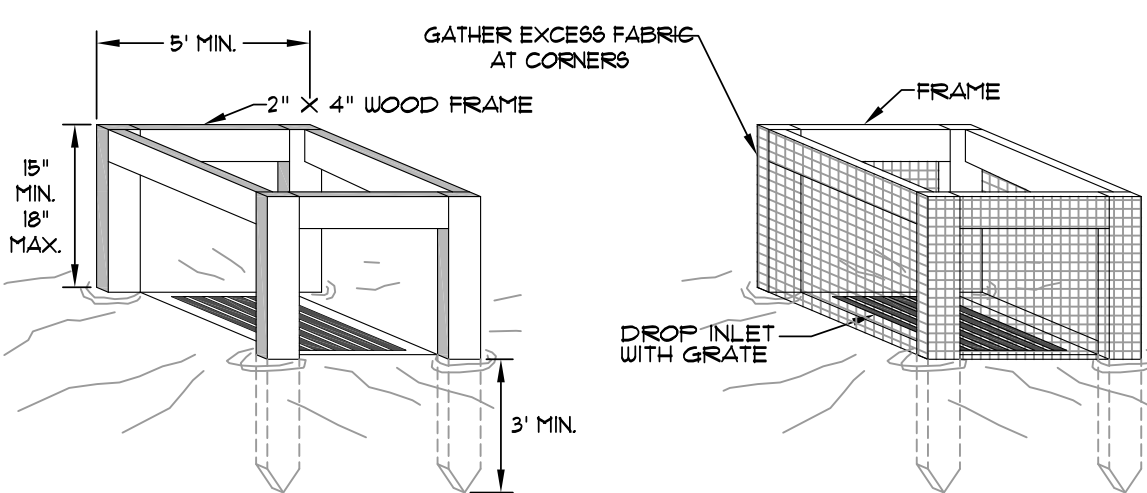
**SECTION - DUMPED RIPRAP**  
TOE EXCAVATION IN SOIL



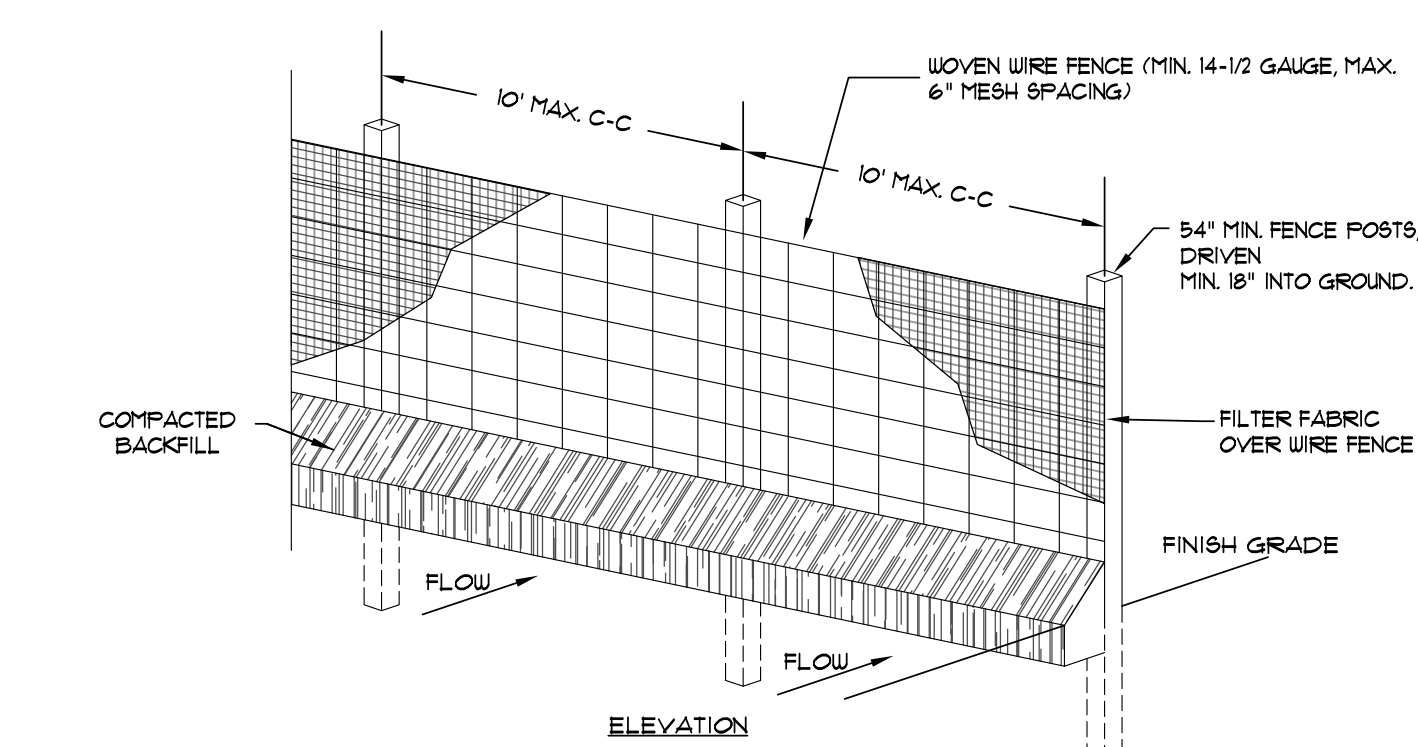
**CONSTRUCTION ENTRANCE**  
NOT TO SCALE



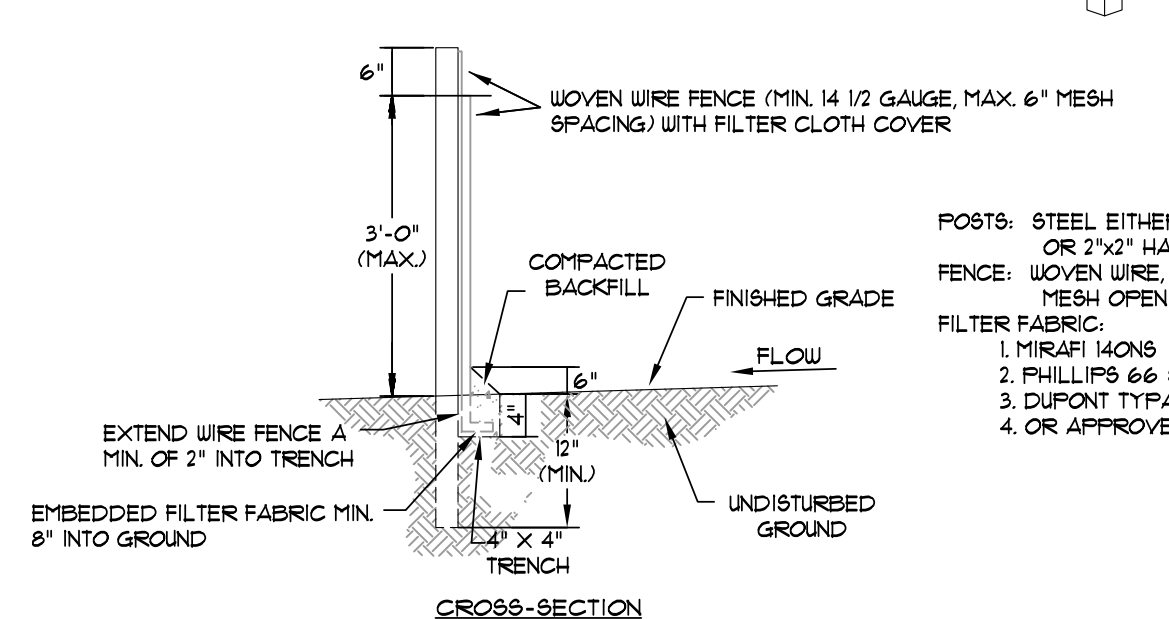
**ROCK CHECK DAM**  
SCALE: 1/2" = 1'-0"



**SILT FENCE INLET PROTECTION**  
SCALE: 1/2" = 1'-0"

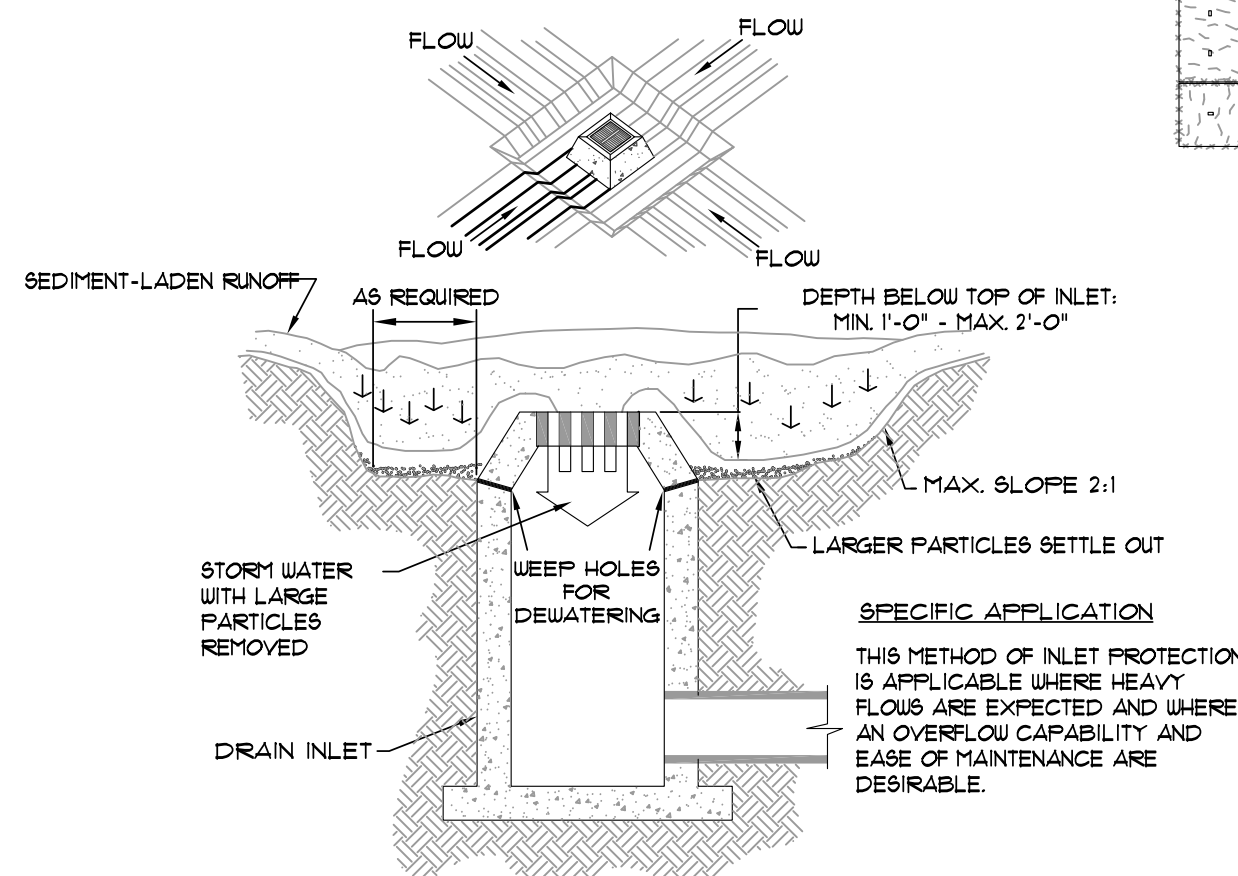


**SILT FENCE**  
NOT TO SCALE

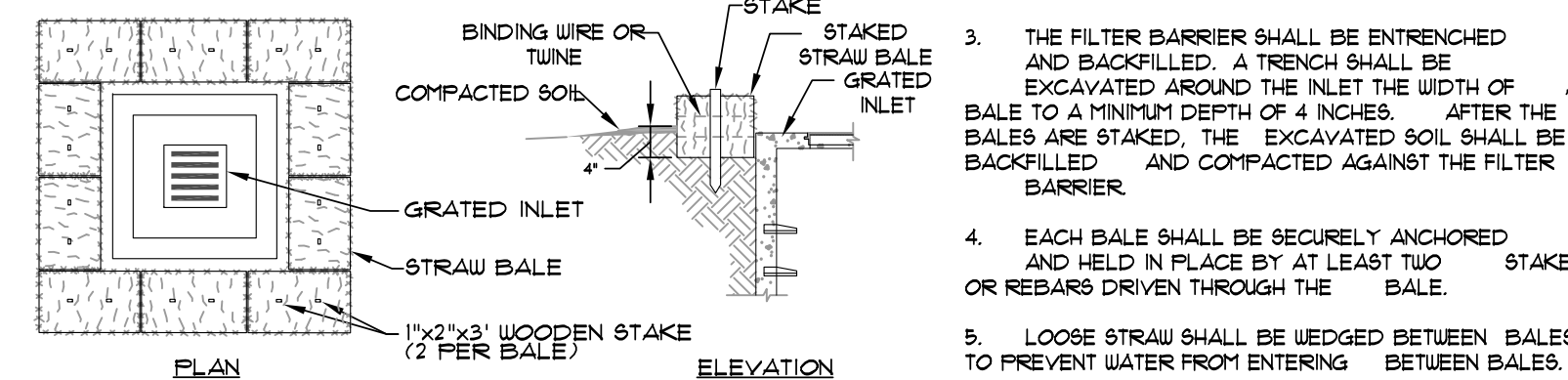


1. WOVEN WIRE FENCE TO BE FASTENED SECURELY TO FENCE POSTS WITH WIRE TIES OR STAPLES.
2. FILTER CLOTH TO BE FASTENED SECURELY TO WOVEN WIRE FENCE WITH TIES SPACED EVERY 24\"/>

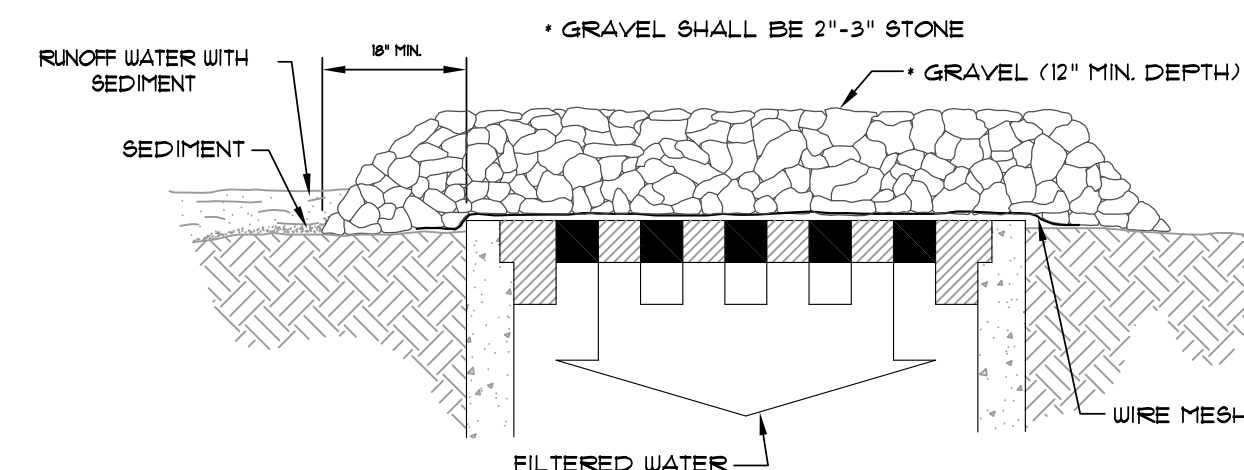
**GRAVEL CURB INLET SEDIMENT FILTER**  
SCALE: 1/2" = 1'-0"



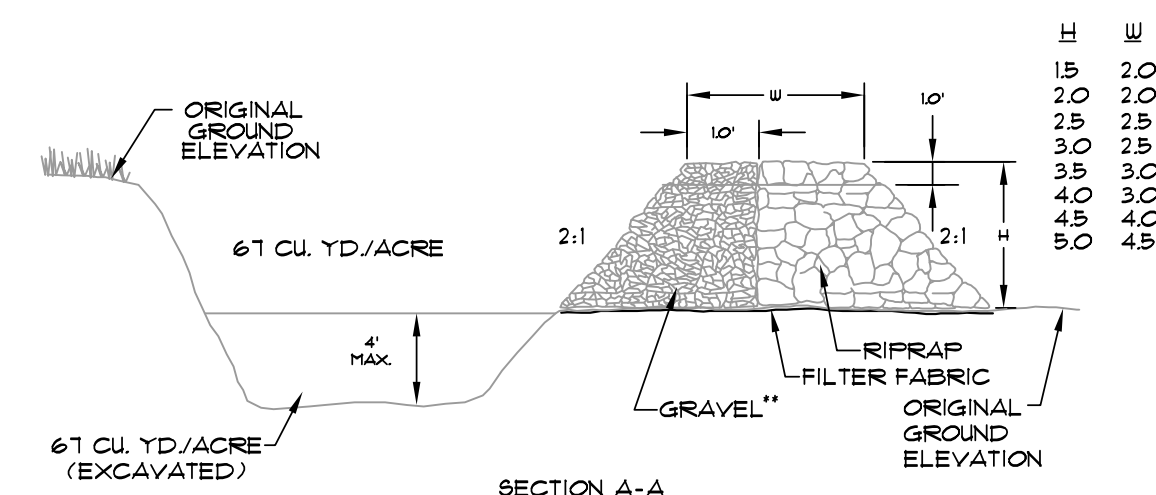
**EXCAVATED INLET SEDIMENT TRAP**  
SCALE: 1/4" = 1'-0"



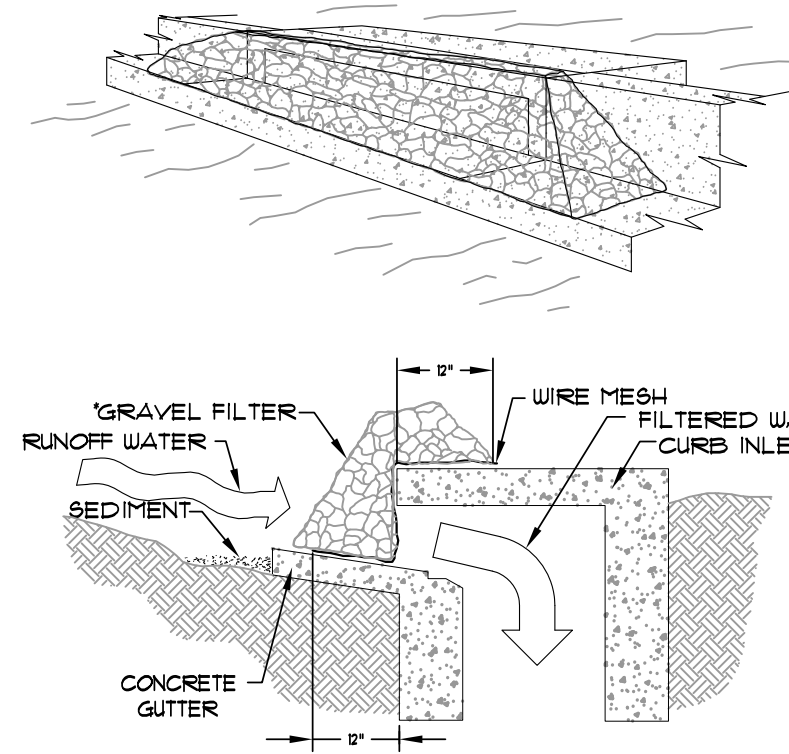
**STRAW BALE INLET SEDIMENT FILTER**  
SCALE: 1/2" = 1'-0"



**GRAVEL AND WIRE MESH INLET SEDIMENT FILTER**  
SCALE: 1/2" = 1'-0"



**TEMPORARY SEDIMENT TRAP**  
SCALE: 3/8" = 1'-0"

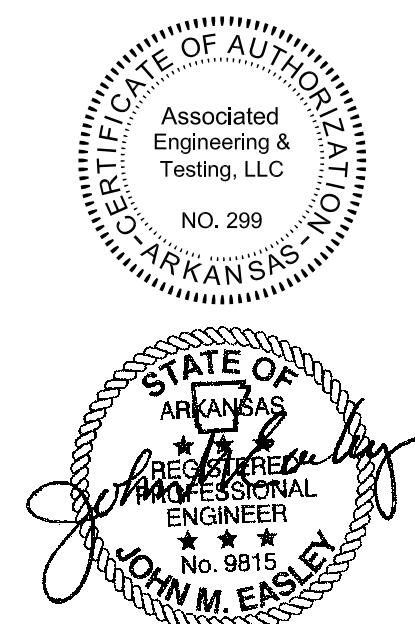
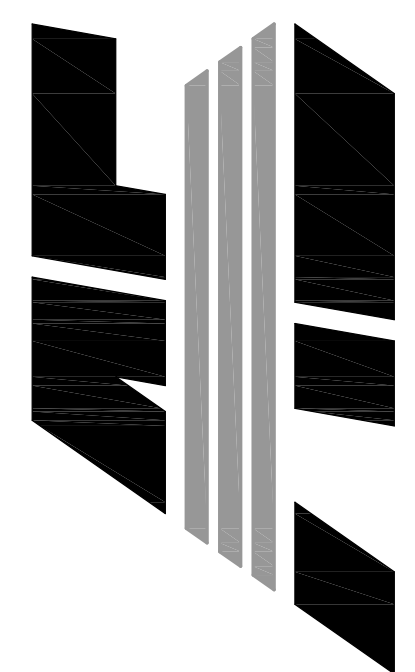


THIS METHOD OF INLET PROTECTION IS APPLICABLE AT CURB INLETS WHERE PONDING IN FRONT OF THE STRUCTURE IS NOT LIKELY TO CAUSE INCONVENIENCE OR DAMAGE TO ADJACENT STRUCTURES AND UNPROTECTED AREAS.

\* GRAVEL SHALL BE 2"-3" STONE

**FIRST NATIONAL BANK**  
3500 EAST JOHNSON AVENUE  
HUT. 49 & HWY. 351  
JONESBORO, ARKANSAS

**ASSOCIATED ENGINEERING, LLC**  
CIVIL ENGINEERING • LAND SURVEYING  
LAND PLANNING  
103 SOUTH CHURCH STREET • P.O. BOX 1462  
JONESBORO, AR 72403  
PH: 870-932-3594 • FAX: 870-935-1263



NO.	DESCRIPTION	DATE
1	ADEQ COMMENTS	07/13/16

**EROSION CONTROL DETAILS**

DATE: 06/27/16	DRAWN: CCH
CADD FILE: 15165-SDP	CHECKED: JME
DWG# 0414104.000X	SHEET
SCALE: 1" = 40'	C012