

LEGEND

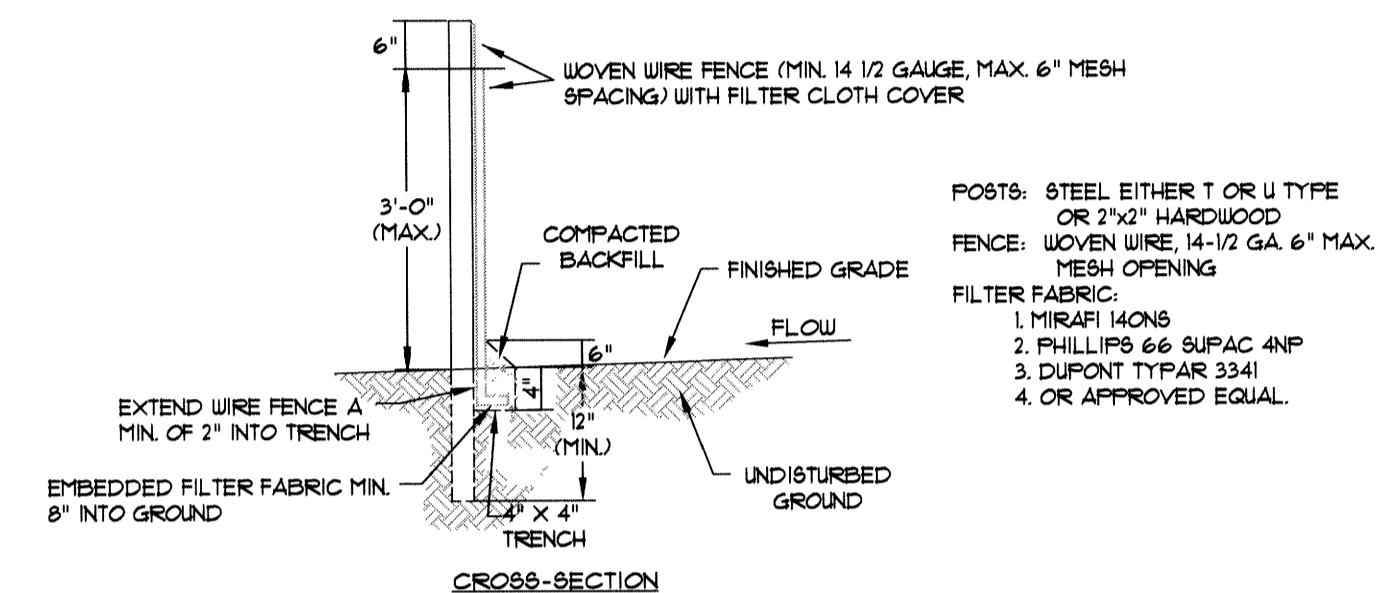
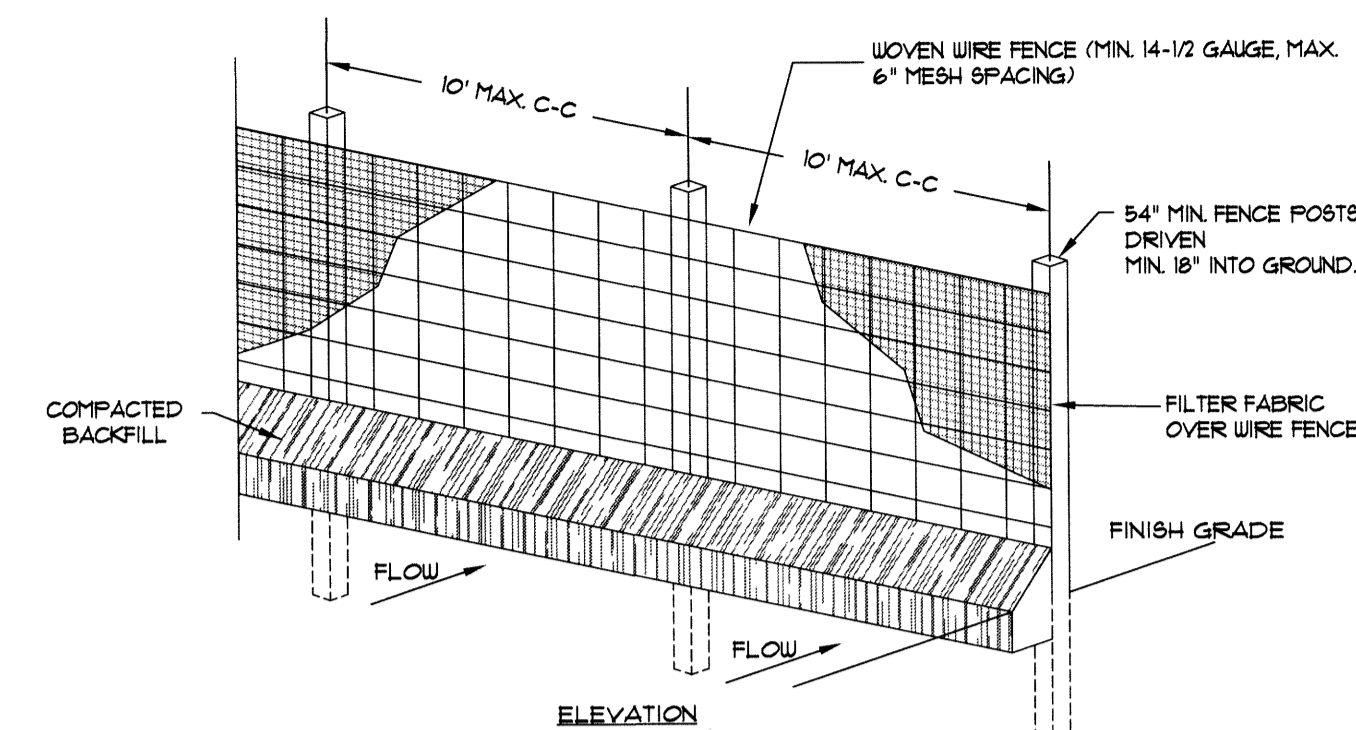
- DRAINAGE FLOW
- SILT FENCE
- CONSTRUCTION ENTRANCE
- INLET PROTECTION

ENGINEER'S NOTES

- ELEVATIONS SHOWN HEREON ARE IN FEET AND DECIMAL PARTS THEREOF AND REFER TO NAVD 88 DATUM.
- NEITHER THE OWNER OR THE ENGINEER SHALL BE RESPONSIBLE FOR SUB-SURFACE CONDITIONS. THE CONTRACTOR SHOULD MAKE HIS OWN DETERMINATION CONCERNING SUB-SURFACE CONDITIONS.
- THROUGHOUT ALL EXCAVATION ACTIVITIES, POSITIVE DRAINAGE SHALL BE MAINTAINED WITHIN MINIMUM SLOPES OF 0.50% OR GREATER AND SURFACE DRAINAGE GENERALLY IN THE DIRECTION PROVIDED BY EXISTING TOPOGRAPHY.
- WORK SHALL PROGRESS IN SUCH A MANNER AS TO ALLOW EXISTING VEGETATION TO REMAIN AS LONG AS POSSIBLE, CONSISTENT WITH THE SCOPE OF WORK.
- ALL SPOT ELEVATIONS ARE EDGE OF ASPHALT, UNLESS OTHERWISE NOTED.
- DUST SHALL BE KEPT AT TOLERABLE LIMITS.
- ALL ACCESSIBLE ROUTES SHALL HAVE A MAXIMUM CROSS SLOPE OF 2.0%. ALL ACCESSIBLE PARKING SPACES SHALL HAVE A MAXIMUM SLOPE OF 2.0% IN ALL DIRECTIONS.
- ALL SIDEWALKS HAVE A SLOPE OF LESS THAN 5.0%. ALL SIDEWALKS HAVE A CROSS SLOPE OF 2.0% OR LESS.

EROSION CONTROL MEASURES

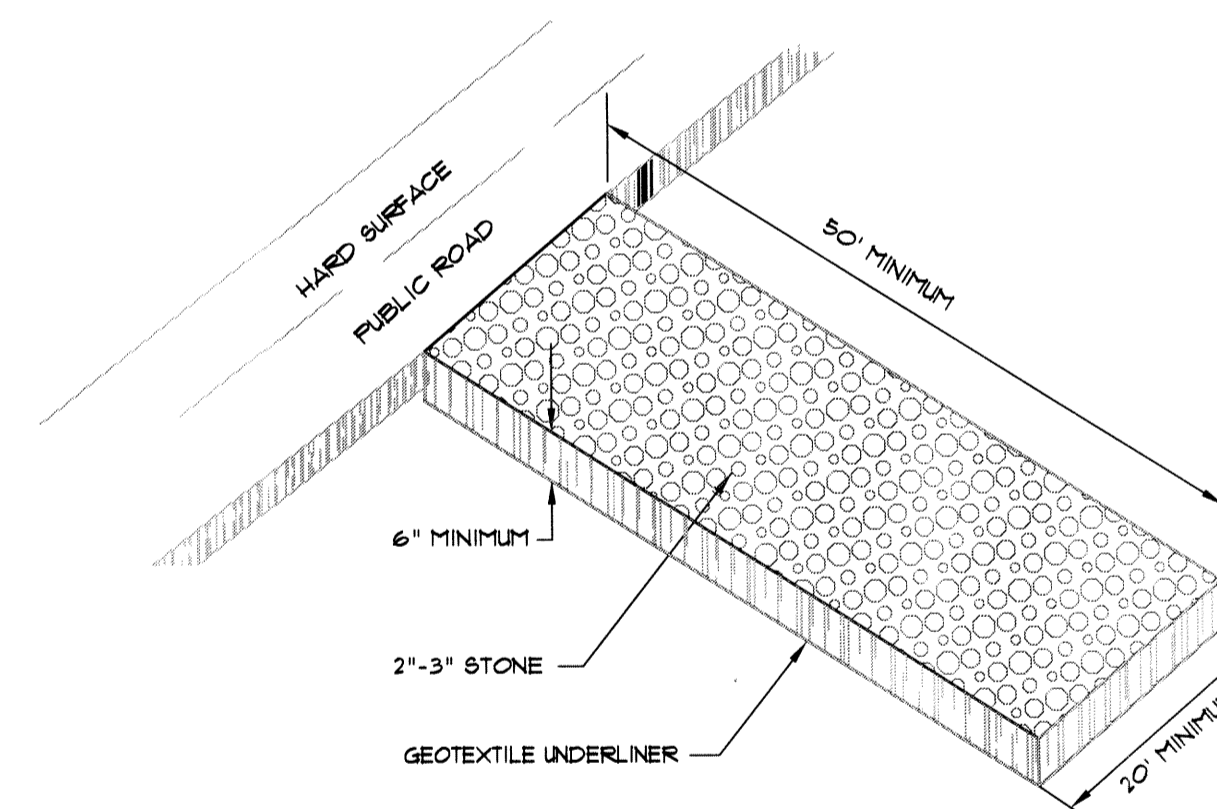
- THE PURPOSE OF THIS PLAN IS TO ESTABLISH MINIMUM EROSION CONTROL MEASURES. THIS PLAN IS NOT INTENDED TO COVER ALL MEASURES, BUT TO SUPPLEMENT, EXPAND OR IMPLEMENT THE REQUIREMENTS OF THE STATE OF ARKANSAS NATIONAL POLLUTION DISCHARGE ELIMINATION SYSTEM GENERAL PERMIT (NPDES PERMIT).
- SILT FENCING SHALL BE PLACED ALONG THE LIMITS OF CONSTRUCTION AND AROUND EACH DRAINAGE STRUCTURE PRIOR TO CONSTRUCTION.
- GRAVEL CONSTRUCTION ENTRANCES SHALL BE CONSTRUCTED AT PROPOSED DRIVEWAY LOCATIONS TO PREVENT TRANSPORT OF SEDIMENT OFF SITE. WHEEL WASH FACILITIES MAY BE REQUIRED.
- THE OWNER SHALL BE RESPONSIBLE FOR INSTALLING ALL EROSION CONTROL MEASURES AND FACILITIES IN GOOD WORKING CONDITION THROUGHOUT THE ENTIRE CONSTRUCTION PERIOD. ANY FAILURES IN THE MEASURES MUST BE IMMEDIATELY REPAIRED. EROSION CONTROL MEASURES AND FACILITIES SHALL BE FREQUENTLY INSPECTED FOR COMPLIANCE. FAILURE TO INSTALL OR MAINTAIN THESE FACILITIES MAY RESULT IN DENIAL OF BUILDING INSPECTIONS UNTIL ALL PROBLEMS ARE CORRECTED. CONTRACTORS SHALL BE HELD ACCOUNTABLE FOR CONSTRUCTION VEHICLES TRACKING DIRT AND MUD ONTO PUBLIC STREETS. CONTRACTORS SHALL PUT INTO PLACE APPROPRIATE FACILITIES TO CLEAN VEHICLES BEFORE THEY ENTER STREETS. THE CONTRACTOR SHALL FREQUENTLY SWEEP THE ACCESS STREETS.
- THE OWNER SHALL BE RESPONSIBLE FOR SUBMITTING A NOTICE OF INTENT WITH THE ARKANSAS DEPARTMENT OF ENVIRONMENTAL QUALITY (ADEQ).
- DUST SHALL BE KEPT TO A MINIMUM. THE USE OF MOTOR OILS AND OTHER PETROLEUM BASED LIQUIDS FOR DUST SUPPRESSION ARE PROHIBITED.
- ALL WORK ON THIS SITE PERTAINING TO EXCAVATION AND DRAINAGE SHALL BE IN ACCORDANCE WITH THIS PLAN AND THE APPLICABLE PROVISIONS OF THE CITY OF JONESBORO STORM WATER MANAGEMENT REGULATIONS.
- ADDITIONAL CONTROLS MAY BE REQUIRED BY THE CITY OF JONESBORO AND ADEQ DURING CONSTRUCTION. GUIDELINES ESTABLISHED BY THE SOIL CONSERVATION SERVICE MAY BE REQUIRED FOR SEEDING OPERATIONS IF DETERMINED NECESSARY.



- WOVEN WIRE FENCE TO BE FASTENED SECURELY TO FENCE POSTS WITH WIRE TIES OR STAPLES.
- FILTER CLOTH TO BE FASTENED SECURELY TO WOVEN WIRE FENCE WITH TIES SPACED EVERY 24\"/>

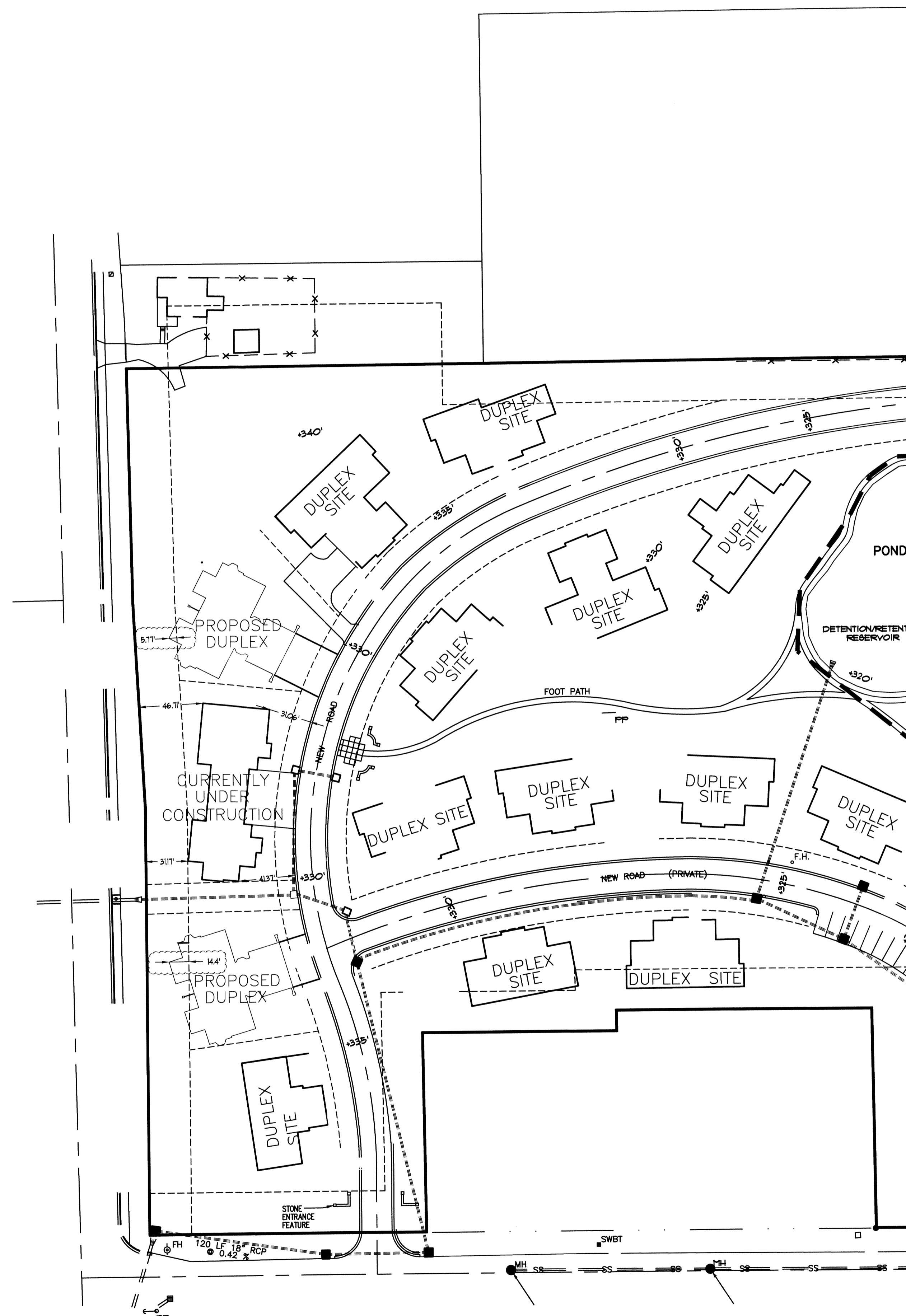
SILT FENCE

NOT TO SCALE



CONSTRUCTION ENTRANCE

NOT TO SCALE



REV	DATE	REVISIONS	DRAWN	CHKD

ASSOCIATED ENGINEERING AND TESTING, LLC
CIVIL ENGINEERING AND LAND SURVEYING SERVICES
103 SOUTH CHURCH STREET - P.O. BOX 1462 - JONESBORO, AR 72403
PH: 870-932-3594 FAX: 870-935-1263

DUPLEX PLOT PLAN
ST. BERNARDS VILLAGE
PHASE "A"
JONESBORO, ARKANSAS

DRAWN: CCH	CHECKED: JME	DATE: 02/24/16	SHEET
SCALE: 1" = 50'	CADD FILE: 95165-031	DWG: 0414182XXXX	1 OF 1