



City of Jonesboro

Municipal Center
300 S. Church Street
Jonesboro, AR 72401

Meeting Agenda Public Safety Council Committee

Tuesday, November 21, 2017

5:00 PM

Municipal Center

1. Call To Order

2. Roll Call by City Clerk Donna Jackson

3. Approval of minutes

[MIN-17:120](#)

Minutes for the Public Safety meeting on October 17, 2017

Attachments: [Public Safety minutes 101717](#)

4. New Business

5. Pending Items

6. Other Business

[COM-17:074](#)

Mosquito report from Vector Disease Control for September/October 2017 Year End 2017

Attachments: [Vector Mosquito Report Jonesboro year end 2017.pdf](#)

7. Public Comments

8. Adjournment



City of Jonesboro

300 S. Church Street
Jonesboro, AR 72401

Legislation Details (With Text)

File #: MIN-17:120 **Version:** 1 **Name:** Minutes for the Public Safety meeting on October 17, 2017
Type: Minutes **Status:** To Be Introduced
File created: 10/18/2017 **In control:** Public Safety Council Committee
On agenda: **Final action:**
Title: Minutes for the Public Safety meeting on October 17, 2017
Sponsors:
Indexes:
Code sections:
Attachments: [Public Safety minutes 101717](#)

Date	Ver.	Action By	Action	Result
------	------	-----------	--------	--------

Minutes for the Public Safety meeting on October 17, 2017



City of Jonesboro

Municipal Center
300 S. Church Street
Jonesboro, AR 72401

Meeting Minutes Public Safety Council Committee

Tuesday, October 17, 2017

5:00 PM

Municipal Center

1. Call To Order

2. Roll Call by City Clerk Donna Jackson

Mayor Harold Perrin was in attendance.

Present 4 - Gene Vance;Chris Gibson;Mitch Johnson and David McClain

Absent 1 - Chris Moore

3. Approval of minutes

[MIN-17:108](#)

Minutes for the Public Safety Committee Meeting on September 19, 2017

Attachments: [Public Safety Minutes 09192017.pdf](#)

A motion was made by Councilman Chris Gibson, seconded by Councilman David McClain, that this matter be Passed . The motion PASSED with the following vote.

Aye: 3 - Gene Vance;Chris Gibson and David McClain

Absent: 1 - Chris Moore

4. New Business

RESOLUTIONS TO BE INTRODUCED

[RES-17:160](#)

A RESOLUTION TO THE CITY OF JONESBORO TO PLACE VARIOUS TRAFFIC SIGNS AT DESIGNATED LOCATIONS AS DETERMINED BY THE TRAFFIC CONTROL COMMITTEE

A motion was made by Councilman Chris Gibson, seconded by Councilman Gene Vance, that this matter be Recommended to Council . The motion PASSED with the following vote.

Aye: 3 - Gene Vance;Chris Gibson and David McClain

Absent: 1 - Chris Moore

5. Pending Items

6. Other Business

Councilmember McClain said he knows the council had discussed the issue before, but he asked that the council look at treating bicycles as vehicles and giving them the right to use a four-lane. He said I know we talked about that signage before and I was looking up just something before I got here. In Arkansas, according to the statute that defines vehicles, the law states that bicycles are not vehicles, but a person riding a bicycle has all the rights and duties of the driver of a vehicle. I wanted to see if we could look at putting that signage up. He asked Communications Director Bill Campbell if they could do something where we create some type of awareness campaign where we say look, this is a law, and we need to abide by the law, everybody. I was looking at that before I came and wanted to throw that out there and see if we can get something done. Mayor Perrin said it was so noted and the council would look at it.

7. Public Comments**8. Adjournment**

A motion was made by Councilman Chris Gibson, seconded by Councilman David McClain, that this meeting be Adjourned . The motion PASSED with the following vote.

Aye: 3 - Gene Vance;Chris Gibson and David McClain

Absent: 1 - Chris Moore



Legislation Details (With Text)

File #: COM-17:074 **Version:** 1 **Name:** Mosquito report from Vector Disease Control for September/October 2017 Year End 2017

Type: Other Communications **Status:** To Be Introduced

File created: 10/12/2017 **In control:** Public Safety Council Committee

On agenda: **Final action:**

Title: Mosquito report from Vector Disease Control for September/October 2017 Year End 2017

Sponsors:

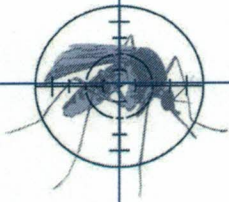
Indexes:

Code sections:

Attachments: [Vector Mosquito Report Jonesboro year end 2017.pdf](#)

Date	Ver.	Action By	Action	Result
------	------	-----------	--------	--------

Mosquito report from Vector Disease Control for September/October 2017 Year End 2017



Vector Disease Control, Inc.

Mosquito Surveillance and Control Report

for the

City of Jonesboro

September/October 2017

Year End 2017

2221 N. Church St. Jonesboro, AR 72401

T-870.933.6939 F- 870.933.0122

www.vdci.net





City of Jonesboro Activity Report

September/October 2017

Vector Disease Control, Inc. (VDCI) provides a proven, scientific approach to mosquito control for the city of Jonesboro. VDCI's operations include larval and adult mosquito surveillance followed by the application of larvicides and adulticides. In addition, our office responds to service requests from the public.

Mosquito Surveillance

VDCI has utilized a total of (13) New Jersey light traps placed in residential and recreational areas throughout Jonesboro during this reporting period. These traps collected an average of 5.6 mosquitoes per trap night (300 total mosquitoes) during this time. There have been a total of 3 mosquito species collected, with *Anopheles quadrimaculatus* being the most predominant species.

Larval Control Activity

Permanent water, flood water, artificial containers, and drainage system sites are inspected for larval mosquito breeding on a regular basis. In total, 25 sites were inspected for larvae, 5 sites were located containing larvae and as a result 110 oz of Aquabac 200 larvacide was used. mosquito breeding sites. Additionally, VDCI is continuing to eliminate breeding habitats for artificial container mosquitoes by targeting bird baths, buckets, tires, etc.



Adult Mosquito Control Activity

In response to community events and mosquito surveillance data, VDCI applied the adulticide Kontrol 30-30 on 33 truck nights for this reporting period. All adulticide ULV applications were made with truck-mounted ULV units equipped with GPS-enabled monitors. During this report period, a total of 952.0 spray miles (33,572 acres) were treated with a total of 266.4 gallons of adulticide in residential and recreational areas. In addition to routine truck spraying, VDCI has responded to 24 service requests and adulticided for all parks and any special events, including softball and soccer tournaments, throughout the month.

Summary

During this reporting period, VDCI has continued to provide exceptional control of larval and adult mosquito populations. VDCI will remain diligent in our surveillance and control activities to prevent a significant increase in the mosquito population. Based on recent weather conditions VDCI expects the trend of routine adulticiding and larviciding to continue. However, if VDCI detects a significant rise in the mosquito population we will increase larval and adult control. As always, VDCI welcomes residents with any mosquito-related questions or concerns to contact VDCI's Jonesboro office directly at 870.933.6939.

We appreciate the opportunity to provide the abatement program for the city of Jonesboro and look forward to serving the city in the future.



Year-end Totals: 2017

Adulticiding-

Total chemical sprayed: 1,259.5 gallons

Total nights sprayed: 134

Total miles treated: 7,157.5 (actual miles)

Total acres treated: 212,685.7

Service Request Total: 253

Larviciding-

Total larvicide used: 401.3 ounces

Total inspection sites treated: 279

Light Trap Surveillance-

Total mosquitoes 34.1

Total species collected: 4

Aerial

Total Gallons: 420.5

Total Acres: 72,753



Adult Mosquito Surveillance Report

Start Date: 9/1/2017

End Date: 10/12/2017

Jonesboro

Trap Location	Date Trap Set	Trap Type	Mosquito Species	No. Collected	
Treatment Area 0 Collections					
Trap Site 6	10/3/2017	NJ Light Trap	<i>Anopheles quadrimaculatus</i>	0	
			<i>Anopheles quadrimaculatus</i>	0	
			Trap Total	0	(Avg. 0)
Treatment Area 1 Collections					
Trap Site 1	9/8/2017	NJ Light Trap	<i>Anopheles quadrimaculatus</i>	7	
			<i>Anopheles quadrimaculatus</i>	0	
Trap Site 1	9/14/2017	NJ Light Trap	<i>Anopheles quadrimaculatus</i>	4	
Trap Site 1	9/24/2017	NJ Light Trap	<i>Anopheles quadrimaculatus</i>	4	
Trap Site 1	9/29/2017	NJ Light Trap	<i>Anopheles quadrimaculatus</i>	2	
Trap Site 1	10/3/2017	NJ Light Trap	<i>Anopheles quadrimaculatus</i>	1	
Trap Total				18	(Avg. 3.6)
Trap Site 2	9/8/2017	NJ Light Trap	<i>Anopheles quadrimaculatus</i>	2	
			<i>Anopheles quadrimaculatus</i>	0	
Trap Site 2	9/14/2017	NJ Light Trap	<i>Anopheles quadrimaculatus</i>	8	
Trap Site 2	9/24/2017	NJ Light Trap	<i>Anopheles quadrimaculatus</i>	7	
Trap Site 2	9/29/2017	NJ Light Trap	<i>Anopheles quadrimaculatus</i>	8	
Trap Site 2	10/3/2017	NJ Light Trap	<i>Anopheles quadrimaculatus</i>	4	
Trap Total				29	(Avg. 5.8)
Trap Site 3	9/8/2017	NJ Light Trap	<i>Anopheles quadrimaculatus</i>	2	
			<i>Anopheles quadrimaculatus</i>	11	
Trap Site 3	9/24/2017	NJ Light Trap	<i>Anopheles quadrimaculatus</i>	9	
Trap Total				22	(Avg. 11)
Trap Site 4	9/8/2017	NJ Light Trap	<i>Anopheles quadrimaculatus</i>	5	
			<i>Anopheles quadrimaculatus</i>	5	
Trap Site 4	9/24/2017	NJ Light Trap	<i>Anopheles freeborni</i>	11	
Trap Total				21	(Avg. 10.5)
Trap Site 5	9/8/2017	NJ Light Trap	<i>Anopheles quadrimaculatus</i>	4	
			<i>Anopheles quadrimaculatus</i>	2	

Vector Disease Control International
 2221 N. Church Street
 Jonesboro, AR
 800-413-4445

Trap Location	Date Trap Set	Trap Type	Mosquito Species	No. Collected	
				<i>Trap Total</i>	6 (Avg. 6)
Trap Site 6	9/8/2017	NJ Light Trap	<i>Anopheles quadrimaculatus</i>	10	
			<i>Anopheles quadrimaculatus</i>	3	
			<i>Trap Total</i>	13 (Avg. 13)	
Trap Site 7	9/8/2017	NJ Light Trap	<i>Anopheles quadrimaculatus</i>	5	
			<i>Trap Total</i>	5 (Avg. 5)	

Treatment Area 2 Collections

Trap Site 3	9/14/2017	NJ Light Trap	<i>Anopheles quadrimaculatus</i>	2	
Trap Site 3	9/29/2017	NJ Light Trap	<i>Anopheles quadrimaculatus</i>	5	
			Trap Total	7	(Avg. 3.5)
Trap Site 4	10/3/2017	NJ Light Trap	<i>Anopheles quadrimaculatus</i>	2	
			Trap Total	2	(Avg. 2)
Trap Site 5	10/3/2017	NJ Light Trap	<i>Anopheles quadrimaculatus</i>	2	
			Trap Total	2	(Avg. 2)

Treatment Area 3 Collections

Trap Site 2	9/14/2017	NJ Light Trap	<i>Anopheles quadrimaculatus</i>	1	
Trap Site 2	9/24/2017	NJ Light Trap	<i>Anopheles quadrimaculatus</i>	1	
Trap Site 2	9/29/2017	NJ Light Trap	<i>Anopheles quadrimaculatus</i>	1	
Trap Site 2	10/3/2017	NJ Light Trap	<i>Anopheles quadrimaculatus</i>	1	
			<i>Anopheles quadrimaculatus</i>	0	
Trap Total				4	(Avg. 1)
Trap Site 7	10/3/2017	NJ Light Trap	<i>Anopheles quadrimaculatus</i>	3	
			Trap Total	3	(Avg. 3)

Treatment Area 4 Collections

Trap Site 3	9/14/2017	NJ Light Trap	<i>Anopheles quadrimaculatus</i>	2	
Trap Site 3	9/24/2017	NJ Light Trap	<i>Anopheles freeborni</i>	21	
Trap Site 3	9/29/2017	NJ Light Trap	<i>Anopheles quadrimaculatus</i>	6	
Trap Site 3	10/3/2017	NJ Light Trap	<i>Anopheles quadrimaculatus</i>	2	
			<i>Anopheles quadrimaculatus</i>	2	
Trap Total				33	(Avg. 8.2)

Treatment Area 5 Collections

Vector Disease Control International
2221 N. Church Street
Jonesboro, AR
800-413-4445

Trap Location	Date Trap Set	Trap Type	Mosquito Species	No. Collected
Trap Site 5	9/14/2017	NJ Light Trap	<i>Anopheles quadrimaculatus</i>	7
Trap Site 5	9/24/2017	NJ Light Trap	<i>Anopheles quadrimaculatus</i>	11
			<i>Anopheles quadrimaculatus</i>	0
Trap Site 5	9/29/2017	NJ Light Trap	<i>Anopheles quadrimaculatus</i>	2
Trap Site 5	10/3/2017	NJ Light Trap	<i>Anopheles quadrimaculatus</i>	1
Trap Total				21 (Avg. 5.2)
Trap Site 7	9/14/2017	NJ Light Trap	<i>Anopheles quadrimaculatus</i>	3
Trap Total				3 (Avg. 3)

Treatment Area 6 Collections

Trap Site 5	9/24/2017	NJ Light Trap	<i>Anopheles quadrimaculatus</i>	2
Trap Site 5	9/29/2017	NJ Light Trap	<i>Anopheles quadrimaculatus</i>	4
Trap Site 5	10/3/2017	NJ Light Trap	<i>Anopheles quadrimaculatus</i>	2
Trap Total				8 (Avg. 2.7)
Trap Site 6	9/14/2017	NJ Light Trap	<i>Anopheles quadrimaculatus</i>	19
Trap Site 6	9/24/2017	NJ Light Trap	<i>Anopheles quadrimaculatus</i>	6
Trap Site 6	9/29/2017	NJ Light Trap	<i>Anopheles quadrimaculatus</i>	0
Trap Site 6	10/3/2017	NJ Light Trap	<i>Anopheles quadrimaculatus</i>	0
Trap Total				25 (Avg. 6.2)
Trap Site 7	9/24/2017	NJ Light Trap	<i>Anopheles quadrimaculatus</i>	5
Trap Total				5 (Avg. 5)

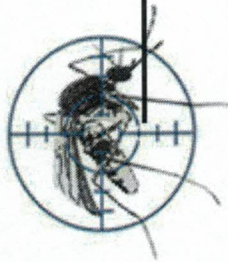
Treatment Area 8 Collections

Trap Site 4	9/14/2017	NJ Light Trap	<i>Anopheles quadrimaculatus</i>	7
			<i>Anopheles quadrimaculatus</i>	2
Trap Site 4	9/24/2017	NJ Light Trap	<i>Anopheles quadrimaculatus</i>	6
Trap Site 4	9/29/2017	NJ Light Trap	<i>Anopheles quadrimaculatus</i>	2
			<i>Anopheles quadrimaculatus</i>	11
Trap Site 4	10/3/2017	NJ Light Trap	<i>Anopheles quadrimaculatus</i>	0
			<i>Anopheles quadrimaculatus</i>	0
Trap Total				28 (Avg. 7)

Treatment Area 9 Collections

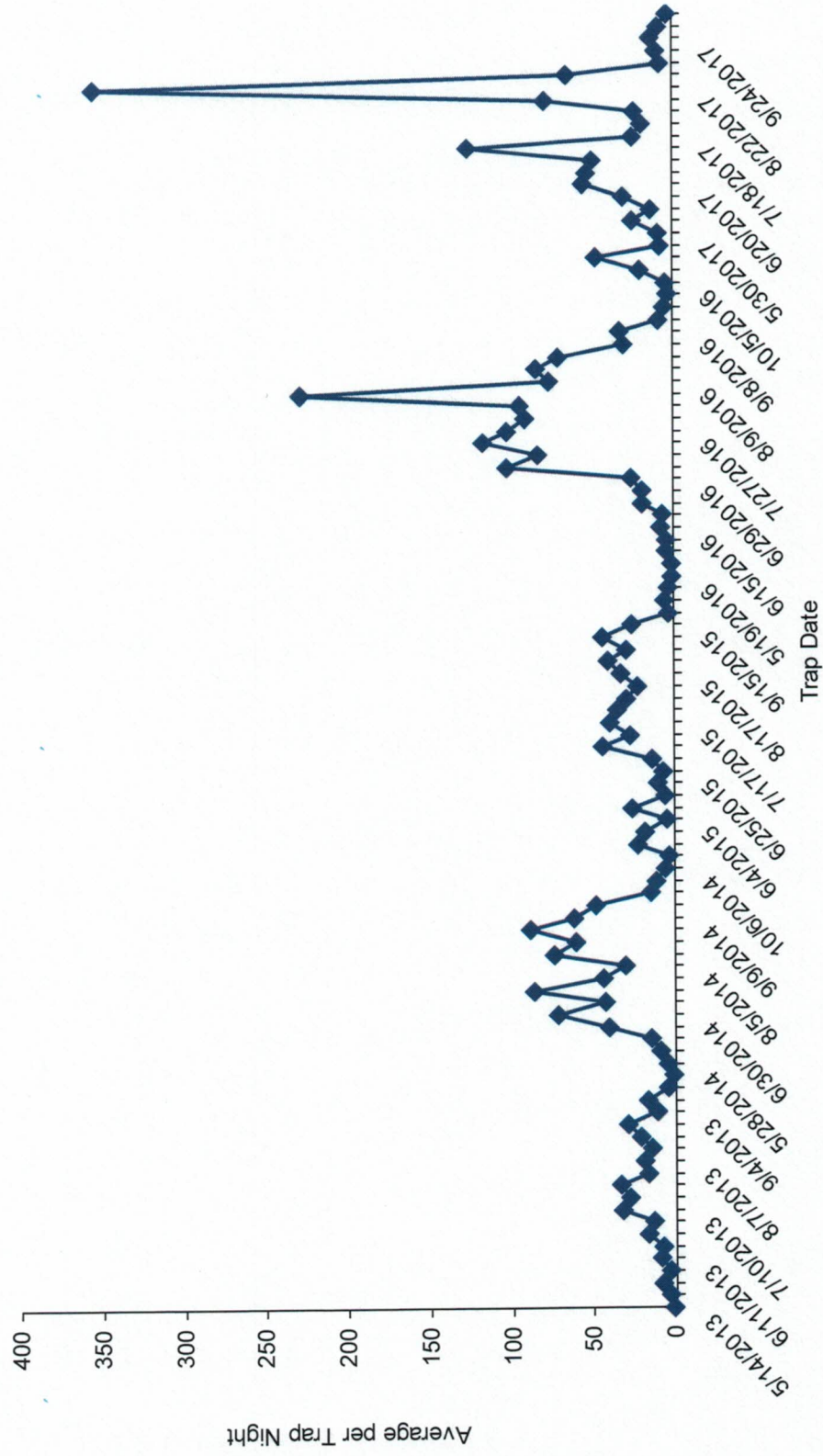
Trap Site 6	9/14/2017	NJ Light Trap	<i>Anopheles quadrimaculatus</i>	6
Trap Site 6	9/29/2017	NJ Light Trap	<i>Anopheles quadrimaculatus</i>	0

Trap Location	Date Trap Set	Trap Type	Mosquito Species	No. Collected
				<i>Trap Total</i> 6 (Avg. 3)
Treatment Area 10 Collections				
Trap Site 1	9/14/2017	NJ Light Trap	<i>Anopheles quadrimaculatus</i>	7
Trap Site 1	9/24/2017	NJ Light Trap	<i>Anopheles quadrimaculatus</i>	12
Trap Site 1	9/29/2017	NJ Light Trap	<i>Anopheles quadrimaculatus</i>	14
Trap Site 1	10/3/2017	NJ Light Trap	<i>Anopheles quadrimaculatus</i>	6
				<i>Trap Total</i> 39 (Avg. 9.8)
				<i>Overall Trap Total</i> 300
				<i>Overall Trap Average</i> 5.6



Adult Mosquito Surveillance Summary

Jonesboro





Larval Surveillance Data

Start Date: 9/1/2017

End Date: 10/12/2017

Jonesboro

Date	Location	Habitat	No. Dipped	Larvicided	Mosquito Species	No. ID'd
Treatment Area 1 Sites Inspected						
9/25/2017	1800 Carolyn	Ditch	4	Yes		
	2700 Covey Drive	Ditch	30	Yes		
	Don's Auto Sales East Johnson ave	Tires	0	No		
	Lightning Tire N church st	Tires	0	No		
	Purcell Tire South caraway rd	Tires	5	Yes		
	Raider Tire Industiral drive	Tire	8	Yes		
	Smith Tire EAsT Johnson ave	Tires	0	No		
	Sunrise Auto 193 Henson rd	Tire	4	Yes		
9/26/2017	1012 Cheery wood	Ditch	0	No		
	1706 Ashwood	Ditch	0	No		
	1800 Redwood	Ditch	0	No		
	1901 Catharine	Ditch	0	No		
	1901 Foxmeadow ln	Ditch	0	No		
	2013 Turtle creek Rd	Ditch	0	No		
	2229 Sistance Chapel	Ditch	0	No		
	2301 Fox meadow ln	Tires	0	No		
	2712 Sunnybrook	Ditch	0	No		
	2807 Slping Valley	Ditch	0	No		
	2904 Covey Rd	Ditch	0	No		
	3107 Flemon rd	Ditch	0	No		

Vector Disease Control International
2221 N. Church Street
Jonesboro, AR
800-413-4445

Date	Location	Habitat	No. Dipped	Larvicided	Mosquito Species	No. ID'd
9/26/2017	3205 ova drive	Ditch	0	No		
	3501 Oval Ridge	Ditch	0	No		
	3827 S Culberhouse	Ditch	0	No		
	3900 S carraway	DITCH	0	No		
	401 Brookstone	Ditch	0	No		
	402 Greenmeadow	Ditch	0	No		
	4500 Finn Rd	Ditch	0	No		
	5200 Maple Valley	Ditch	0	No		
	5200 Woodsprings rd	Ditch	0	No		
	5404 Johnwood	Ditch	0	No		
	Flemon Rd	Ditch	0	No		
	Flemon rd	Ditch	0	No		
	Harrisburg rd	Ditch	0	No		
	Lrakins Grove 1100	Ditch	0	No		
	Mardis dr 604	Ditch	0	No		
	Neely av	Ditch	0	No		
	South Brook 4402	DITCH	0	No		
9/28/2017	2300 Sunnymeadow	Ditch	0	No		
	2301 Fox Meadow ln	Ditch	0	No		
	3900 Kentspl	Ditch	0	No		
	3900 s Carraway	Ditch	0	No		
	South Brook 4402	Ditch	0	No		
	Stonebrook 4404	Ditch	0	No		

Total Sites Inspected in Zone 1: 43



Larvicide Applications

Start Date: 9/1/2017

End Date: 10/12/2017

Jonesboro

Date	Location	Habitat	No. of Larvae	Larvicide	Amount Applied (oz.)	Area Treated (sq ft)
Treatment Area 1 Applications						
9/25/2017	1800 Carolyn	Ditch	4	Aquabac 200G (62637-3)	2.0	15.0
	2700 Covey Drive	Ditch	30	Aquabac 200G (62637-3)	4.0	10.0
	Purcell Tire South caraway rd	Tires	5	Aquabac 200G (62637-3)	24.0	10.0
	Raider Tire Industiral drive	Tire	8	Aquabac 200G (62637-3)	48.0	20.0
	Sunrise Auto 193 Henson rd	Tire	4	Aquabac 200G (62637-3)	32.0	12.0
Total Ounces Applied:					110.0	67.0 0.0 acres
Total Larvicide Applied in Zone 1:					110.0	67.0 0.0 acres
Overall Total Ounces Applied					110.0	67.0 0.0 acres



Service Request Adulicide Applications

Start Date: 9/1/2017

End Date: 10/12/2017

Jonesboro

Date	Location	Chemical	Mix Ratio	Amount Applied	Area Treated
Treatment Area 0 Applications					
9/1/2017				0.0	0.00 acres
9/7/2017				0.0	0.00 acres
9/15/2017				0.0	0.00 acres
9/18/2017				0.0	0.00 acres
9/18/2017				0.0	0.00 acres
10/6/2017				0.0	0.00 acres
Total Applied:				0.0 (0.0 gals)	0.00 acres
9/8/2017		D Guard		0.0	0.50 acres
Total D Guard Applied:				0.0 (0.0 gals)	0.50 acres
9/21/2017	3106 woodsprings rd	Kontrol 30-30 (73748-5)	5.1	60.0	2.00 acres
Total Kontrol 30-30 Applied:				60.0 (0.5 gals)	2.00 acres
9/14/2017	1203 West Contry Club T	Kontrol 31-67 (73748-6)	1.3	18.0	8.00 acres
9/18/2017	HWY 1 Red Wolf	Kontrol 31-67 (73748-6)	1.3	270.0	40.00 acres
9/21/2017	Red wolf	Kontrol 31-67 (73748-6)	1.3	180.0	50.00 acres
Total Kontrol 31-67 Applied:				468.0 (3.7 gals)	98.00 acres
Treatment Area 1 Applications					
9/14/2017	2212 Arrow head farm rd	Kontrol 31-67 (73748-6)	1.3	18.0	0.25 acres
9/14/2017	2212 Arrow head Farm rd	Kontrol 31-67 (73748-6)	1.3	90.0	2.00 acres
9/18/2017	3700 Fielder Dr	Kontrol 31-67 (73748-6)	13	18.0	6.00 acres

Vector Disease Control International
950 N. Broadway, Suite B
Greenville, MS 38701
800-413-4445

Date	Location	Chemical	Mix Ratio	Amount Applied	Area Treated
Total Kontrol 31-67 Applied:				126.0 (1.0 gals)	8.25 acres
Treatment Area 4 Applications					
8/30/2017	4712 Grissom ln	Kontrol 31-67 (73748-6)	1.3	12.0	5.00 acres
Total Kontrol 31-67 Applied:				12.0 (0.1 gals)	5.00 acres
Treatment Area 5 Applications					
9/22/2017	1207 County Mahor Lane	Dealta Guard 200		0.0	0.00 acres
Total Dealta Guard 200 Applied:				0.0 (0.0 gals)	0.00 acres
9/20/2017	701 Mardis dr	DG 200		0.0	0.00 acres
Total DG 200 Applied:				0.0 (0.0 gals)	0.00 acres
9/8/2017	1805 Pine Valley	Kontrol 31-67 (73748-6)	1.3	48.0	4.00 acres
Total Kontrol 31-67 Applied:				48.0 (0.4 gals)	4.00 acres
Treatment Area 6 Applications					
8/30/2017	3501	Kontrol 31-67 (73748-6)	1.3	12.0	6.00 acres
9/19/2017	HWY 1	Kontrol 31-67 (73748-6)	1.3	420.0	50.00 acres
9/20/2017	Red Wolf	Kontrol 31-67 (73748-6)	1.3	210.0	50.00 acres
Total Kontrol 31-67 Applied:				642.0 (5.0 gals)	106.00 acres
Treatment Area 7 Applications					
9/25/2017	2304 Everlyn lane	Kontrol 30-30 (73748-5)	5.1	36.0	2.00 acres
10/5/2017	2200 Evergreen Cove	Kontrol 30-30 (73748-5)	5.1	30.0	7.00 acres
Total Kontrol 30-30 Applied:				66.0 (0.5 gals)	9.00 acres
9/8/2017	2304 Evelyn	Kontrol 31-67 (73748-6)	1.3	30.0	3.00 acres
Total Kontrol 31-67 Applied:				30.0 (0.2 gals)	3.00 acres
Treatment Area 8 Applications					

Date	Location	Chemical	Mix Ratio	Amount Applied	Area Treated
9/1/2017	1203 west Country Club Terrace	Aqua 200		0.0	0.00 acres
<i>Total Aqua 200 Applied:</i>				<i>0.0 (0.0 gals)</i>	0.00 acres
9/27/2017	1415 Hidden Cove	DG 200	5.1	2.0	2.00 acres
<i>Total DG 200 Applied:</i>				<i>2.0 (0.0 gals)</i>	2.00 acres
10/2/2017	2201 Rains	Kontrol 30-30 (73748-5)	5oz per mil	12.0	0.50 acres
<i>Total Kontrol 30-30 Applied:</i>				<i>12.0 (0.1 gals)</i>	0.50 acres
9/1/2017	1805 Woodspoinn Cove	Kontrol 31-67 (73748-6)	1.3	30.0	8.00 acres
9/5/2017	920 lomdurdy cr	Kontrol 31-67 (73748-6)	1.3	30.0	0.50 acres
<i>Total Kontrol 31-67 Applied:</i>				<i>60.0 (0.5 gals)</i>	8.50 acres
Treatment Area 11 Applications					
9/26/2017	3014 B Puneifield Cove	Kontrol 30-30 (73748-5)	5.1	10.0	0.00 acres
<i>Total Kontrol 30-30 Applied:</i>				<i>10.0 (0.1 gals)</i>	0.00 acres
9/13/2017	3014 B Pinefield Cove	Kontrol 31-67 (73748-6)	1.3	30.0	1.00 acres
<i>Total Kontrol 31-67 Applied:</i>				<i>30.0 (0.2 gals)</i>	1.00 acres
Grand Totals				1,566.0 (12.2 gals)	247.75 acres



Service Request Larvicide Applications

Start Date: 9/1/2017

End Date: 10/12/2017

Jonesboro

Date	Location	Habitat	Larvicide	Amount Applied (ounces)	Area Treated (sq ft)
Treatment Area 0 Applications					
9/14/2017				0.00	0.0
9/13/2017				0.00	0.0
9/8/2017				0.00	0.0
9/15/2017	1203 West Contry Club T			0.00	0.0
9/18/2017				0.00	0.0
9/18/2017	\			0.00	0.0
9/20/2017				0.00	0.0
9/18/2017	HWY 1 Red Wolf			0.00	0.0
9/27/2017	3106 woodsprings rd			0.00	0.0
9/21/2017	Red wolf			0.00	0.0
10/9/2017				0.00	0.0
Total Applied:				0.00	0.0 0.0 acres
Total Larvicide Applied in Zone 0:				0.00	0.0 0.0 acres
Treatment Area 1 Applications					
9/14/2017	2212 Arrow head farm rd			0.00	0.0
9/18/2017	2212 Arrow head Farm rd			0.00	0.0
9/15/2017	3700 Fielder Dr			0.00	0.0
Total Applied:				0.00	0.0 0.0 acres

Vector Disease Control International
950 N. Broadway, Suite B
Greenville, MS 38701
800-413-4445

Date	Location	Habitat	Larvicide	Amount Applied (ounces)	Area Treated (sq ft)
<i>Total Larvicide Applied in Zone 1:</i>				0.00	0.0 0.0 acres
Treatment Area 4 Applications					
9/1/2017	4712 Grissom ln			0.00	0.0
<i>Total Applied:</i>				0.00	0.0 0.0 acres
<i>Total Larvicide Applied in Zone 4:</i>				0.00	0.0 0.0 acres
Treatment Area 5 Applications					
9/14/2017	1805 Pine Valley			0.00	0.0
9/20/2017	701 Mardis dr			0.00	0.0
9/22/2017	1207 County Mahor Lane			0.00	0.0
<i>Total Applied:</i>				0.00	0.0 0.0 acres
<i>Total Larvicide Applied in Zone 5:</i>				0.00	0.0 0.0 acres
Treatment Area 6 Applications					
9/7/2017	3501			0.00	0.0
9/19/2017	HWY 1			0.00	0.0
9/20/2017	Red Wolf			0.00	0.0
<i>Total Applied:</i>				0.00	0.0 0.0 acres
<i>Total Larvicide Applied in Zone 6:</i>				0.00	0.0 0.0 acres
Treatment Area 7 Applications					
9/14/2017	2304 Evelyn			0.00	0.0
9/25/2017	2304 Everlyn lane			0.00	0.0
10/2/2017	2200 Evergreen Cove			0.00	0.0
<i>Total Applied:</i>				0.00	0.0 0.0 acres
<i>Total Larvicide Applied in Zone 7:</i>				0.00	0.0 0.0 acres
Treatment Area 8 Applications					

Date	Location	Habitat	Larvicide	Amount Applied (ounces)	Area Treated (sq ft)
9/1/2017	1805 Woodspoin Cove			0.00	0.0
9/14/2017	1203 west Country Club Terrace			0.00	0.0
9/5/2017	920 lomdurdy cr			0.00	0.0
9/28/2017	1415 Hidden Cove			0.00	0.0
10/2/2017	2201 Rains			0.00	0.0
<i>Total Applied:</i>				0.00	0.0 0.0 acres
<i>Total Larvicide Applied in Zone 8:</i>				0.00	0.0 0.0 acres
Treatment Area 11 Applications					
9/7/2017	3014 B Pinefield Cove			0.00	0.0
10/5/2017	3014 B Punefield Cove			0.00	0.0
<i>Total Applied:</i>				0.00	0.0 0.0 acres
<i>Total Larvicide Applied in Zone 11:</i>				0.00	0.0 0.0 acres
<i>Overall Total Ounces Applied</i>				0.00	0.0 0.0 acres



Ground Adulticide Applications

Start Date: 9/1/2017 **End Date:** 10/12/2017

Jonesboro

Month	Date	Municipality	Chemical	Mix Ratio	Trip Miles	Spray Miles	Spray Acres	Gallons Sprayed
Treatment Area 1 Applications								
September 2017	9/25/2017		Kontrol 30-30 (73748-5)	5.1	44.0	37.4	1363.2	1.0
	9/25/2017		Kontrol 30-30 (73748-5)	5.1	36.0	32.5	1181.5	14.2
	9/26/2017		Kontrol 30-30 (73748-5)	5.1	45.0	12.5	453.0	2.1
	9/26/2017		Kontrol 30-30 (73748-5)	5.1	42.0	38.5	1397.0	9.4
	9/26/2017		Kontrol 30-30 (73748-5)	5.1	39.0	35.9	1306.9	10.1
	9/28/2017		Kontrol 30-30 (73748-5)	5.1	35.0	32.8	1194.1	14.4
	9/28/2017		Kontrol 30-30 (73748-5)	5.1	37.0	35.3	1285.2	15.5
	9/28/2017		Kontrol 30-30 (73748-5)	5.1	33.0	29.3	1063.0	7.9
	9/28/2017		Kontrol 30-30 (73748-5)	5.1	35.0	28.3	1027.0	6.7
	9/28/2017		Kontrol 30-30 (73748-5)	5.1	86.0	23.4	849.0	6.0

Vector Disease Control International
2221 N. Church Street
Jonesboro, AR
800-413-4445

Month	Date	Municipality	Chemical	Mix Ratio	Trip Miles	Spray Miles	Spray Acres	Gallons Sprayed
September 2017	9/28/2017		Kontrol 30-30 (73748-5)	5.1	36.0	27.8	1009.0	7.4
<i>Total Kontrol 30-30 Applied: 94.6</i>								
September 2017	9/1/2017		Kontrol 31-67 (73748-6)	1.3	0.0	46.0	1672.7	4.0
	9/1/2017		Kontrol 31-67 (73748-6)	1.3	38.0	24.6	1013.0	9.3
	9/1/2017		Kontrol 31-67 (73748-6)	1.3	38.0	24.6	1013.0	9.3
	9/1/2017		Kontrol 31-67 (73748-6)	1.3	51.0	53.0	1927.3	10.0
	9/1/2017		Kontrol 31-67 (73748-6)	1.3	0.0	0.0	0.0	0.0
	9/1/2017		Kontrol 31-67 (73748-6)	1.3	51.0	15.6	566.0	3.0
	9/1/2017		Kontrol 31-67 (73748-6)	1.3	51.0	15.6	566.0	3.0
	9/1/2017		Kontrol 31-67 (73748-6)	1.3	0.0	53.0	1927.3	4.0
	9/7/2017		Kontrol 31-67 (73748-6)	1.3	0.0	0.0	0.0	0.0
	9/7/2017		Kontrol 31-67 (73748-6)	1.3	45.0	31.8	1156.4	8.4
	9/13/2017		Kontrol 31-67 (73748-6)	1.3	44.0	21.7	787.0	6.2
	9/14/2017		Kontrol 31-67 (73748-6)	1.3	36.0	22.5	815.0	6.1

Vector Disease Control International
 2221 N. Church Street
 Jonesboro, AR
 800-413-4445

Month	Date	Municipality	Chemical	Mix Ratio	Trip Miles	Spray Miles	Spray Acres	Gallons Sprayed
September 2017	9/14/2017		Kontrol 31-67 (73748-6)	1.3	30.0	29.3	1063.6	8.5
	9/15/2017		Kontrol 31-67 (73748-6)	1.3	37.0	45.0		12.6
	9/15/2017		Kontrol 31-67 (73748-6)	1.3	41.0	29.1	1057.4	12.5
	9/20/2017		Kontrol 31-67 (73748-6)	1.3	41.0	40.6	1479.5	11.3
	9/21/2017		Kontrol 31-67 (73748-6)	1.3	36.0	34.1	1238.2	14.9
	9/21/2017		Kontrol 31-67 (73748-6)	1.3	30.0	29.4	1070.4	8.2
<i>Total Kontrol 31-67 Applied: 131.4</i>								
October 2017	10/2/2017		Kontrol 30/30 ()	5.1	30.0	26.5	965.2	7.6
	10/2/2017		Kontrol 30/30 ()	5.1	26.0	25.7	934.6	12.1
<i>Total Kontrol 30/30 Applied: 19.7</i>								
October 2017	10/5/2017		Kontrol 30-30 (73748-5)	5.1	93.0	29.2	1059.0	7.7
	10/5/2017		Kontrol 30-30 (73748-5)	5.1	31.0	20.9	1086.9	13.1
<i>Total Kontrol 30-30 Applied: 20.8</i>								
Zone 1 Totals: 1,217.0				952.0	952.0	33,527.2	266.4	
Grand Totals: 1,217.0				952.0	952.0	33,527.2	266.4	

Vector Disease Control International
2221 N. Church Street
Jonesboro, AR
800-413-4445



Summary of Service Requests

Start Date: 9/1/2017 **End Date:** 10/12/2017

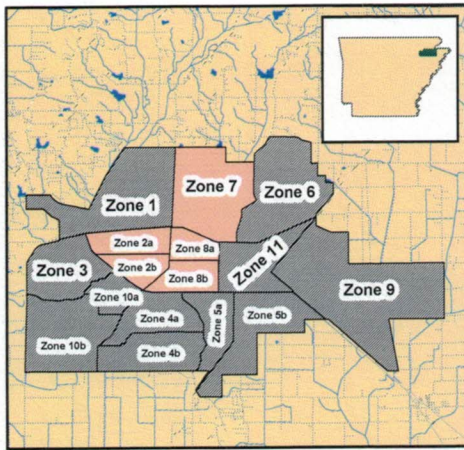
Jonesboro

Month	Municipality	Treatment Area	Total Calls	Total Inspected	Disposition Totals	Total Sites with Mosquitoes	Total Amount of Larvicide Applied	Total Amount of Adulticide Applied
September 2017		0	10	7	No Action Required: 0 Emptied Containers: 0 Biological Control: 0 Larvicided: 0 Adulticided: 0 Needed to Return: 0	Eggs: 0 Larvae: 0 Pupae: 0 Adults: 0	0.00 oz	528.0 oz
September 2017	1		3	3	No Action Required: 0 Emptied Containers: 0 Biological Control: 0 Larvicided: 0 Adulticided: 0 Needed to Return: 0	Eggs: 0 Larvae: 0 Pupae: 0 Adults: 0	0.00 oz	126.0 oz
September 2017	5		3	2	No Action Required: 0 Emptied Containers: 0 Biological Control: 0 Larvicided: 0 Adulticided: 0 Needed to Return: 0	Eggs: 0 Larvae: 0 Pupae: 0 Adults: 0	0.00 oz	48.0 oz

Month	Municipality	Treatment Area	Total Calls	Total Inspected	Disposition Totals	Total Sites with Mosquitoes	Total Amount of Larvicide Applied	Total Amount of Adulticide Applied
September 2017		6	2	2	No Action Required: 0 Emptied Containers: 0 Biological Control: 0 Larvicided: 0 Adulticided: 0 Needed to Return: 0	Eggs: 0 Larvae: 0 Pupae: 0 Adults: 0	0.00 oz	630.0 oz
September 2017		7	2	2	No Action Required: 0 Emptied Containers: 0 Biological Control: 0 Larvicided: 0 Adulticided: 0 Needed to Return: 0	Eggs: 0 Larvae: 0 Pupae: 0 Adults: 0	0.00 oz	66.0 oz
September 2017		8	4	4	No Action Required: 0 Emptied Containers: 0 Biological Control: 0 Larvicided: 0 Adulticided: 0 Needed to Return: 0	Eggs: 0 Larvae: 0 Pupae: 0 Adults: 0	0.00 oz	62.0 oz
September 2017		11	2	1	No Action Required: 0 Emptied Containers: 0 Biological Control: 0 Larvicided: 0 Adulticided: 0 Needed to Return: 0	Eggs: 0 Larvae: 0 Pupae: 0 Adults: 0	0.00 oz	40.0 oz

Month	Municipality	Treatment Area	Total Calls	Total Inspected	Disposition Totals	Total Sites with Mosquitoes	Total Amount of Larvicide Applied	Total Amount of Adulticide Applied
October 2017		0	1	1	No Action Required: 0 Emptied Containers: 0 Biological Control: 0 Larvicided: 0 Adulticided: 0 Needed to Return: 0	Eggs: 0 Larvae: 0 Pupae: 0 Adults: 0	0.00 oz	0.0 oz
October 2017		7	1	1	No Action Required: 0 Emptied Containers: 0 Biological Control: 0 Larvicided: 0 Adulticided: 0 Needed to Return: 0	Eggs: 0 Larvae: 0 Pupae: 0 Adults: 0	0.00 oz	30.0 oz
October 2017		8	1	1	No Action Required: 0 Emptied Containers: 0 Biological Control: 0 Larvicided: 0 Adulticided: 0 Needed to Return: 0	Eggs: 0 Larvae: 0 Pupae: 0 Adults: 0	0.00 oz	12.0 oz
Overall Totals:								
			29	24	NA: 0 EC: 0 BC: 0	LV: 0 AT: 0 NR: 0	0.00 oz	1542.0 oz

Vector Disease Control International
950 N. Broadway, Suite B
Greenville, MS 38701
800-413-4445



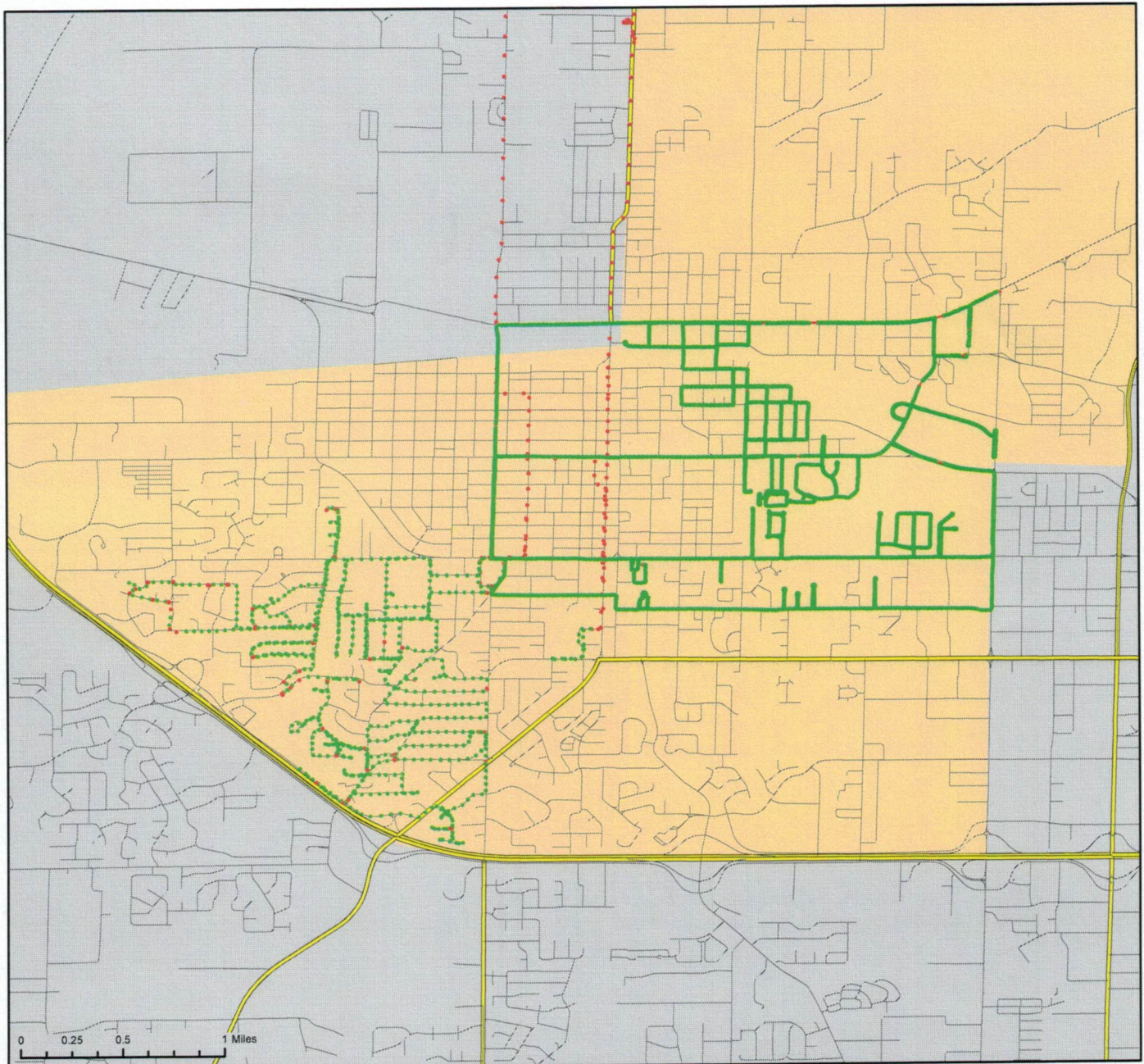
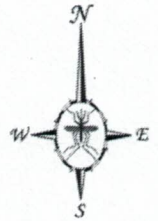
Jonesboro, Arkansas

Ground Adulticide Application Date:
September 14, 2017

Sprayer Status

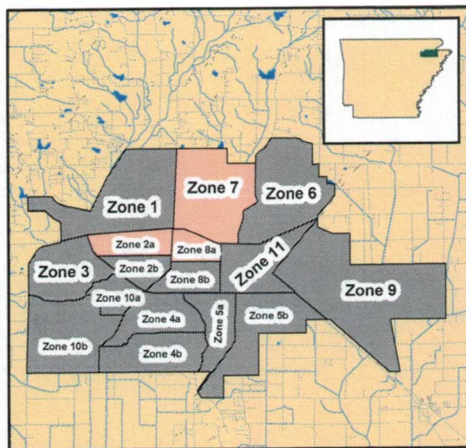
- Spray Off
- Spray On

Chemical: Kontrol 30-30
Quantity Used: 14.6 gal
Miles Treated: 51.8
Acres Treated: 1,879.0



Vector Disease Control
1320 Brookland Dr., Suite H
Little Rock, AR 72202

These map products were developed for use by VDCI for its internal purposes only and were not designed or intended for general use by members of the public. VDCI makes no representation or warranty as to its accuracy, timeliness, or completeness, and in particular, its accuracy in labeling or displaying dimensions, contours, property boundaries, or placement or location of any map features thereon. © 2017 VDCI. All rights reserved.



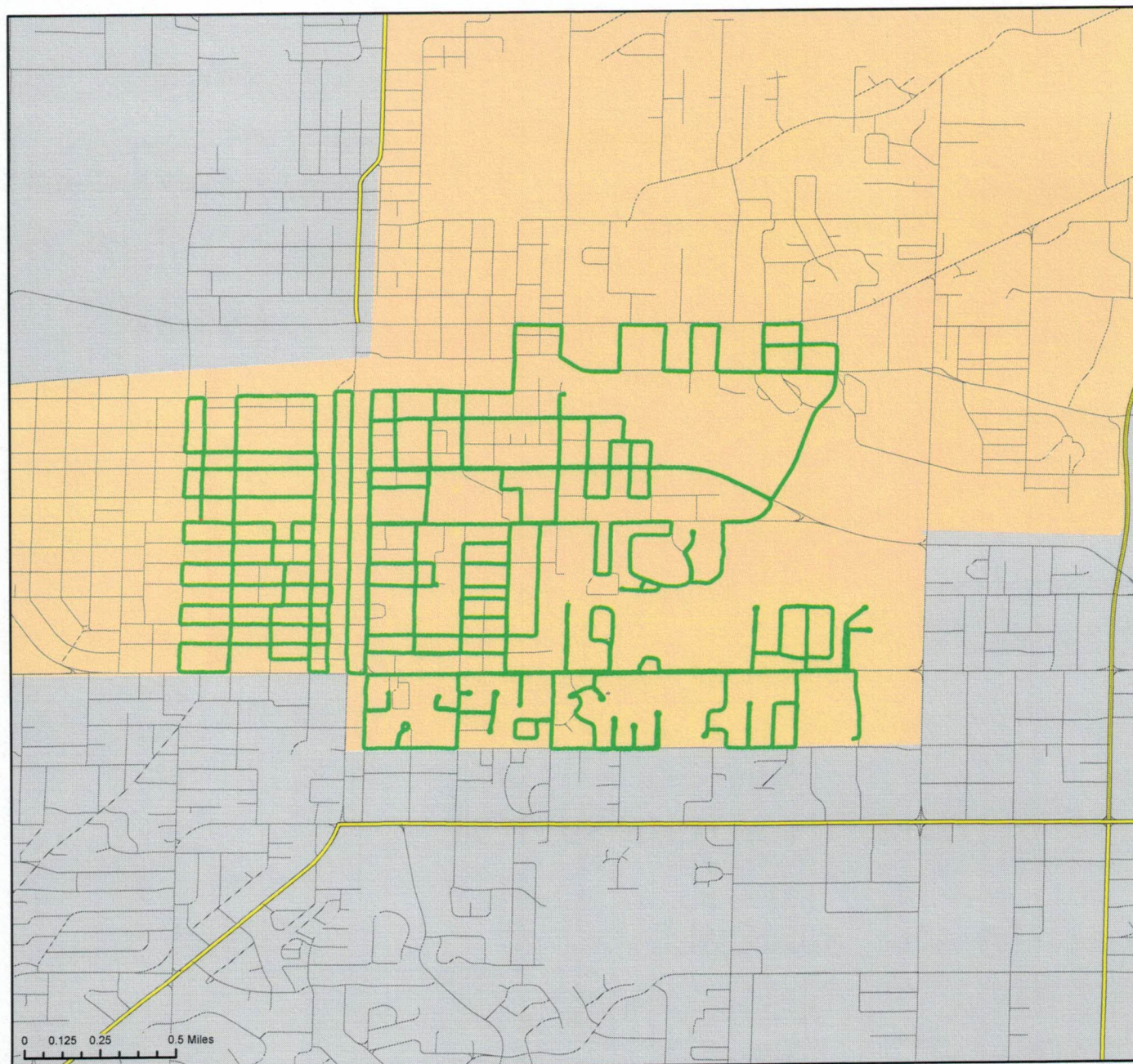
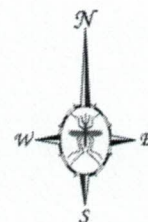
Jonesboro, Arkansas

Ground Adulticide Application Date:
September 20, 2017

Sprayer Status

- Spray Off
- Spray On

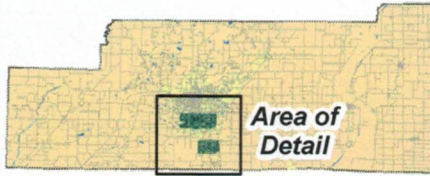
Chemical: Pursuit 31-67
Quantity Used: 11.3 gal
Miles Treated: 40.6
Acres Treated: 1,475.0



Vector Disease Control
1320 Brookland Dr., Suite H
Little Rock, AR 72202

These map products were developed for use by VDCI for its internal purposes only and were not designed or intended for general use by members of the public. VDCI makes no representation or warranty as to its accuracy, timeliness, or completeness, and in particular, its accuracy in labeling or displaying dimensions, contours, property boundaries, or placement or location of any map features thereon. © 2017 VDCI. All rights reserved.

Craighead County



Jonesboro, Arkansas

Aerial Adulticide Application Date:
September 1, 2017



Flight Line

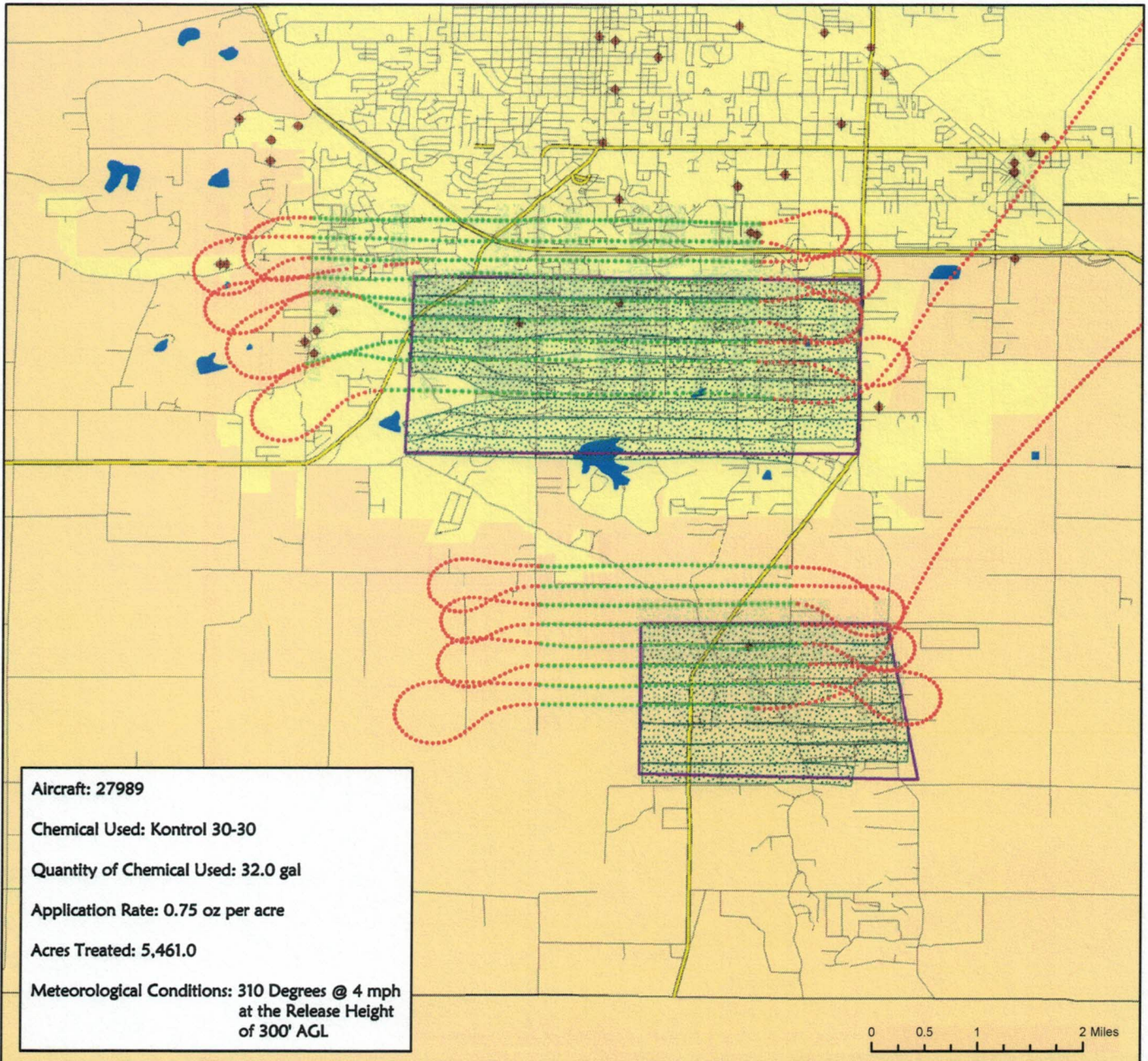
Spray Off

Spray On

Towers

Spray Deposition

Treatment Areas



Aircraft: 27989

Chemical Used: Kontrol 30-30

Quantity of Chemical Used: 32.0 gal

Application Rate: 0.75 oz per acre

Acres Treated: 5,461.0

Meteorological Conditions: 310 Degrees @ 4 mph
at the Release Height
of 300' AGL



Vector Disease Control
1320 Brookwood Dr., Suite H
Little Rock, AR 72202

These map products were developed for use by VDCI for its internal purposes only and were not designed or intended for general use by members of the public. VDCI makes no representation or warranty as to its accuracy, timeliness, or completeness, and in particular, its accuracy in labeling or displaying dimensions, contours, property boundaries, or placement or location of any map features thereon. © 2017 VDCI. All rights reserved.